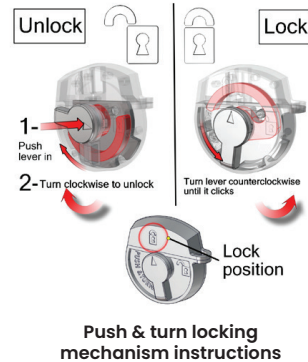


OCX Exhibit Case

Have a Question?

Please contact support@tradeshowplus.com

The OCX is a protective roto-molded shipping case and fits a variety of displays. With built in wheels, a sturdy handle and secure locks, the OCX ensures your display travels safely and securely to any event. Roll wrap and stretch wraps are available to help you easily convert the case to a counter.



Recessed wheels & handles



FEATURES & BENEFITS

- Black roto-molded case
- Ideal for exhibits, graphics & accessories
- Premium latches for maximum strength
- Built-in wheels and molded handle for maximum portability
- Made from recyclable materials
- Made in the USA
- Stretch wrap, roll wrap and fabric wrap available for case to counter conversion
- MDF tabletop optional
- One year limited warranty against manufacturer defects

DIMENSIONS

Interior:
23.5" w x 35.75" h x 13" d

Exterior:
26.75" w x 39.5" h x 17" d

SHIPPING

Case Ships in 1 Box:
40" l x 27" w x 18" d / 32 lbs

OPTIONAL ACCESSORIES

DESIGNER COUNTERTOPS
Available in 4 colors for a premium case to counter conversion look. Holds up to 75 lbs.

COUNTERTOP COLORS:



CARPET WRAPS
Choose from a wide selection of Velcro receptive carpet wrap colors.



ROLL WRAP GRAPHICS
Flexible 22mil PVC printed with your custom logo and marketing message.



STRETCH WRAP GRAPHICS
Dye Sublimated stretch fabric form fits over the OCX case. Printed with your logo and marketing message.



We are continually improving and modifying our product range and reserve the right to vary the specifications without prior notice. All dimensions and weights quoted are approximate and we accept no responsibility for variance. E&OE. See Graphic Templates for graphic bleed specifications.