

Formulate Oval Counter

Formulate counters couple lightweight hardware with printed stretch silicone edge fabric graphics (SEG) to create funky and functional reception stands. Tables and bases are available in four colored finishes – silver, black, mahogany and natural.



features and benefits:

- Printed stretch silicone edge fabric graphics (SEG) for a custom look
- Counter supports 25 lbs. of weight on center
- Choice of four finishes for table and base
- Kit includes: one frame, one dye-sublimated graphic, table and base, and one wheeled molded OCH2 storage case
- Lifetime hardware warranty against manufacturer defects

dimensions:

Hardware	Graphic
<p>Assembled unit: 47.25" w x 38" h x 23.75" d 1200mm(w) x 970mm(h) x 600mm(d)</p> <p>Approximate kit weight (includes graphic): 53 lbs / 24 kgs</p>	<p>Refer to related graphic template for more information.</p> <p>Visit: www.tradeshowplus.com</p>
<p>Shipping</p> <p>Shipping dimensions: 1x OCH2 case:</p> <p>50" l x 30" w x 15" h</p> <p>Approximate shipping weight: (kit and case) 85 lbs / 38.55 kgs</p>	

additional information:

Graphic material:
Dye-sublimated fabric

Wood finish options:



silver black mahogany natural

We are continually improving and modifying our product range and reserve the right to vary the specifications without prior notice. All dimensions and weights quoted are approximate and we accept no responsibility for variance. E&OE. See Graphic Templates for graphic bleed specifications.

Included In Your Kit

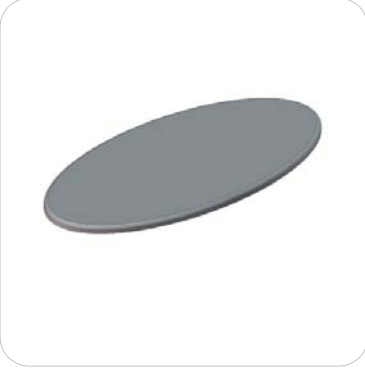
Tools, Components, & Connectors



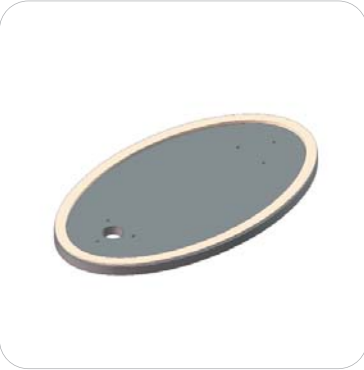
ALLEN KEY SET x1



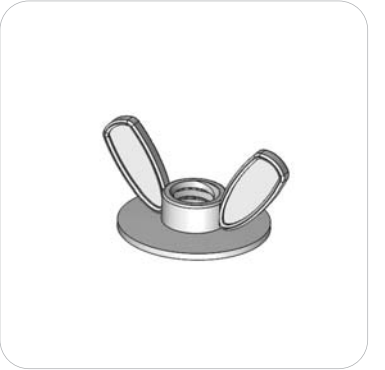
TRI30-COUNTER x2



W-01-C-TOP x1



W-01-C-BASE x1



5/16-18 Flanged Wing Nut x12



5/16-18-2 Full Threaded Set Screw x12

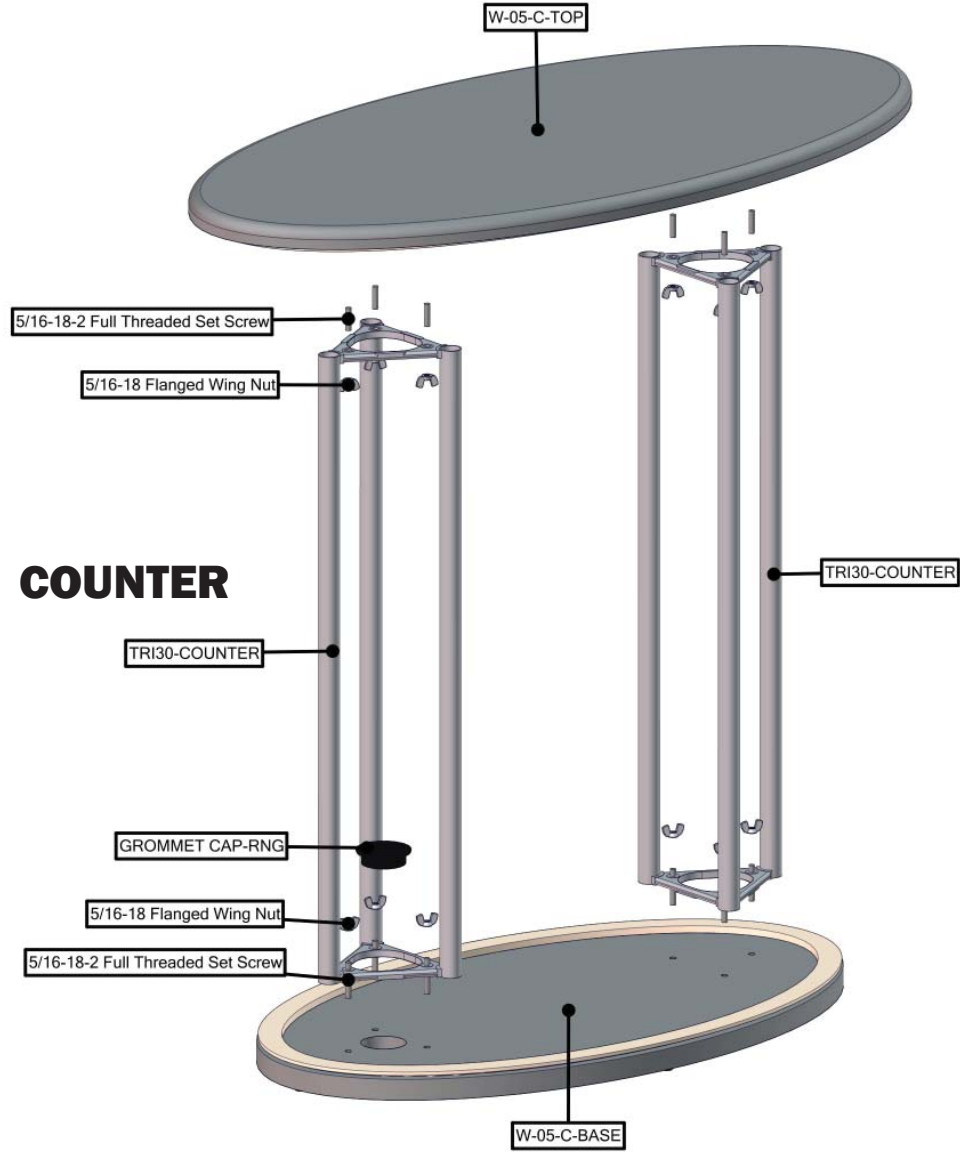
Graphics



W-05-C-G x1

Exploded View

W-05-C

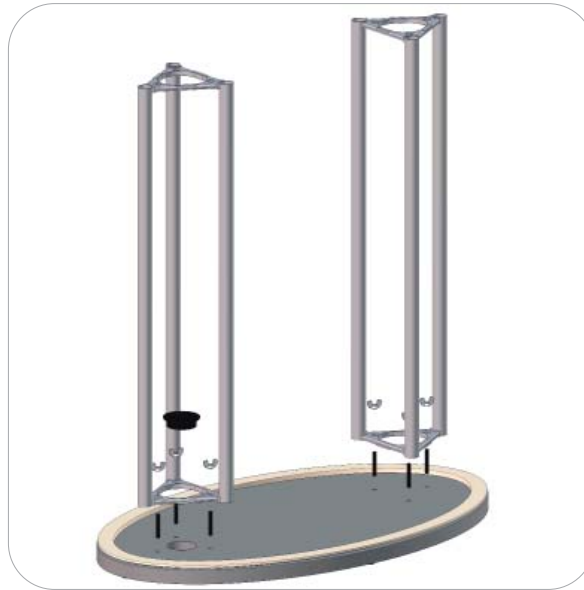


Kit Assembly

Step by Step

Step 1.

Begin by threading your 2" studs through the holes of the base. Attach your TRI30-COUNTER support beam and secure using (3) wing nuts.



Step 2.

Pull your graphic over TRI30-COUNTER beams and push the edges into the seams of the base.



Step 3.

Thread the 1.25" studs into the counter top. Align the counter top so that the studs fall through the holes of the TRI30-COUNTER beam. Secure the counter top using the remaining (3) wing nuts.



Step 4.

Push the top edges of the graphic into the seams of the counter top to complete your assembly.

Setup Complete.

