

EXTRUSION MONITOR BRACKET KIT

Have a Question?

Please contact support@tradeshowplus.com
Visit: www.tradeshowplus.com

SMALL



EXT-SM-MB

SIZES: 17" - 37"

ASSEMBLED UNIT:

9"W X 16"H X 1.4"D
230MM (W) X 410MM (H) X 35MM (D)

SHIPPING DIMENSIONS:

14"L X 6"H X 4"D
356MM (L) X 152MM (H) X 102MM (D)

APPROXIMATE SHIPPING WEIGHT:

6 LB / 2.7 KG

VESA:

75 X 75 - 200 X 200MM

MEDIUM



EXT-M-MB

SIZES: 32" - 55"

ASSEMBLED UNIT:

16"W X 16"H X 1.4"D
410MM (W) X 410MM (H) X 35MM (D)

SHIPPING DIMENSIONS:

24"L X 4"H X 4"D
610MM (L) X 102MM (H) X 102MM (D)

APPROXIMATE SHIPPING WEIGHT:

7 LB / 3.2 KG

VESA:

100 X 100 - 400 X 400MM

LARGE



EXT-LG-MB

SIZES: 40" - 65"

ASSEMBLED UNIT:

24"W X 16"H X 1.4"D
610MM (W) X 410MM (H) X 35MM (D)

SHIPPING DIMENSIONS:

28"L X 6"H X 6"D
711MM (L) X 152MM (H) X 152MM (D)

APPROXIMATE SHIPPING WEIGHT:

8 LB. / 3.6 KG

VESA:

100 X 100 - 600 X 400MM



(2) LN-100



M5 X 10

(2) LN-LCD-SCW



1/4"-20 X 1"

(2) BOLT-1



1/4"-20

(2) WING NUT

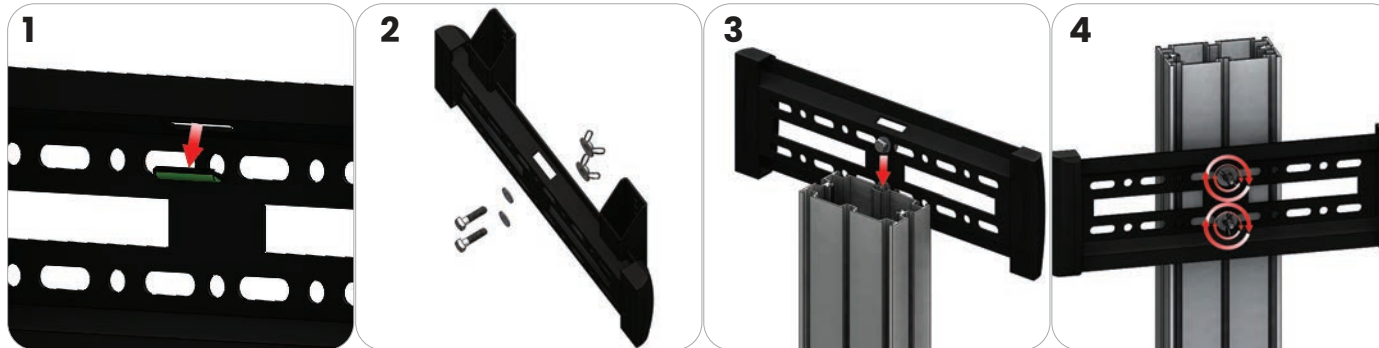
EXTRUSION CONNECTION

Have a Question?

Please contact support@tradeshowplus.com

Visit: www.tradeshowplus.com

Channel Connection A



Locate all components needed to assemble the monitor mount with the channel connection A method. You will need (1) monitor bracket, (2) square head bolts, (2) washers, and (2) wing nuts.

Step 1: Apply pressure to the rear side of the leveling gauge clipped into the monitor mount to remove it.

Step 2: Insert the provided bolts through the washers and center top and bottom holes of the monitor mount. Loosely thread your wing nuts onto the end of the bolts.

Step 3: Slide the bolt heads down the extrusion channel.

Step 4: Tighten your wing nuts to lock the monitor bracket in place.

Step 5: Reference the included manufacturer monitor mount instructions for fastening your monitor to the bracket.

Channel Connection B



Locate all components needed to assemble the monitor mount with the channel connection B method. You will need (1) monitor bracket, (2) LN-LCD-SCW, (2) LN-100, and (2) washers.

Step 1: Apply pressure to the rear side of the leveling gauge clipped into the monitor mount to remove it.

Step 2: Loosely thread the LN-LCD-SCW screws through the washers, the center top and bottom holes of the monitor bracket, and through the LN-50 holes.

Step 3: Slide the LN-100s down the extrusion channel.

Step 4: Tighten your LN-LCD-SCW to lock the monitor bracket in place.

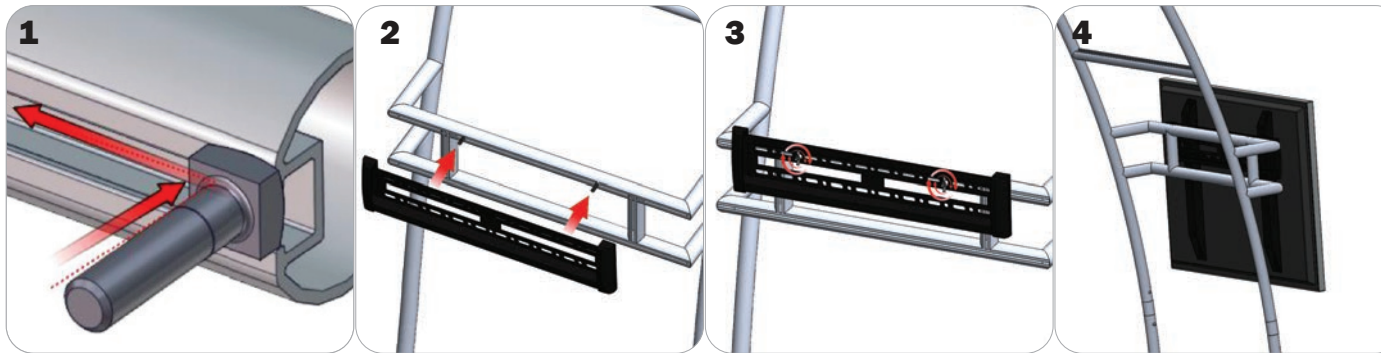
Step 5: Reference the included manufacturer monitor mount instructions for fastening your monitor to the bracket.

EXTRUSION CONNECTION

Have a Question?

Please contact support@tradeshowplus.com
Visit: www.tradeshowplus.com

TRI-30MM Channel Tube Connection



Locate all components needed to assemble the monitor mount with the TRI-30MM Channel Tube Connection method. You will need (1) monitor bracket, (2) Square Bolts, and (2) Wingnuts.

Step 1: Slip the head of the square bolts into the extrusion channel of the tube.

Step 2: Apply your monitor bracket to the protruding square bolts.

Step 3: Lock your monitor bracket to the square bolts using the provided wingnuts.

Step 4: Reference the included manufacturer monitor mount instructions for fastening your monitor to the bracket.