

Contour Outdoor Sign Plate Base


Contour is a heavy-duty double-sided sign. The sign has a steel plate base that can be staked into the ground, and includes hook and loop connections that make changing your message out quick and easy.



features and benefits:

- Steel Plate Base includes 4 stakes to secure into the ground and two uprights for graphic attachment
- 6 Coroplast graphic shapes offered
- Hook and loop attachment for easy graphic replacement
- Weather resistant design for outdoor use
- Easy to store and ship
- Wind rating: 15mph
- One year hardware warranty against manufacturer defects

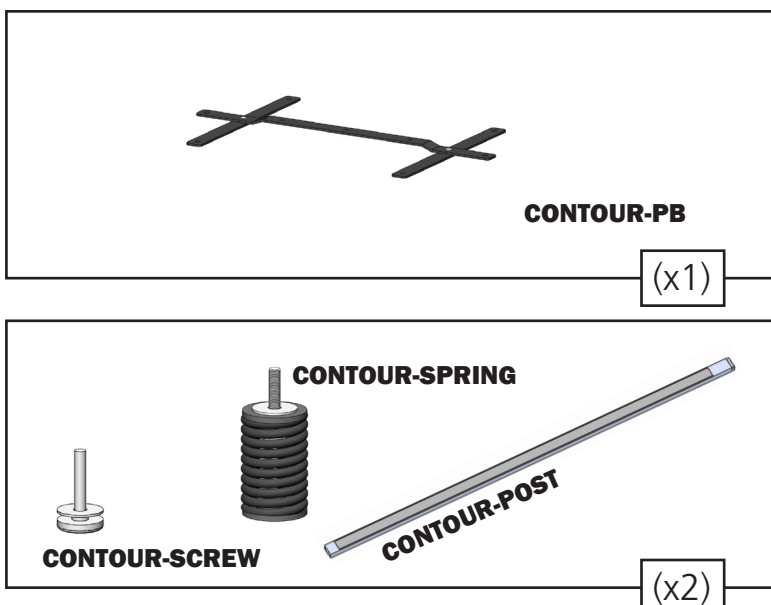
dimensions:

Hardware	Graphic
Assembled base unit: 39.37" W x 42.37" H x 23.62" D 999mm(w) x 1076mm(h) x 599mm(d)	Refer to related graphic template for more information. Six month graphic warranty Visit: https://www.tradeshowplus.com
Approximate weight: 17 lbs / 7 kg	
Shipping	additional information:
Packing case(s): 1 Box	Graphic material: UV printed Coroplast
Shipping dimensions: 55"l x 5"h x 4"d 1397mm(l) x 127mm(h) x 102mm(d)	Coroplast Graphic will ship separately.
Approximate shipping weight: 19 lbs / 8 kg	
	 This product may include the following materials for recycle: aluminum, select wood, fabric, cardboard, paper, steel, and plastics.

We are continually improving and modifying our product range and reserve the right to vary the specifications without prior notice. All dimensions and weights quoted are approximate and we accept no responsibility for variance. E&OE. See Graphic Templates for graphic bleed specifications.

Included in Your Kit:

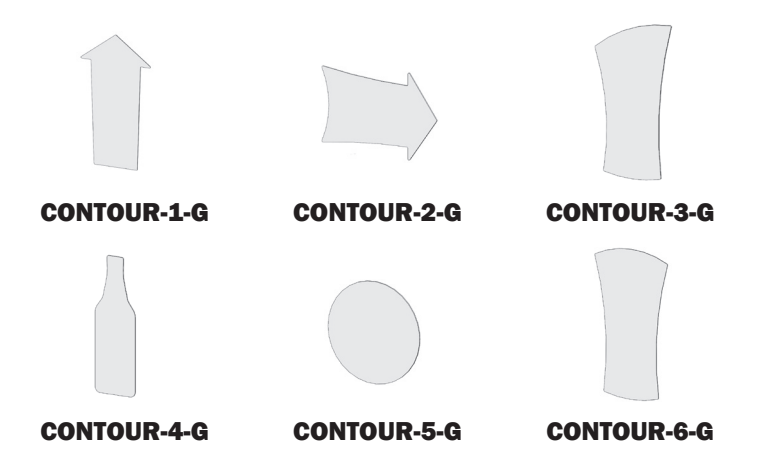
Hardware



CONTOUR-PB (x1)

CONTOUR-SCREW **CONTOUR-SPRING** **CONTOUR-POST** (x2)

Graphic Shapes

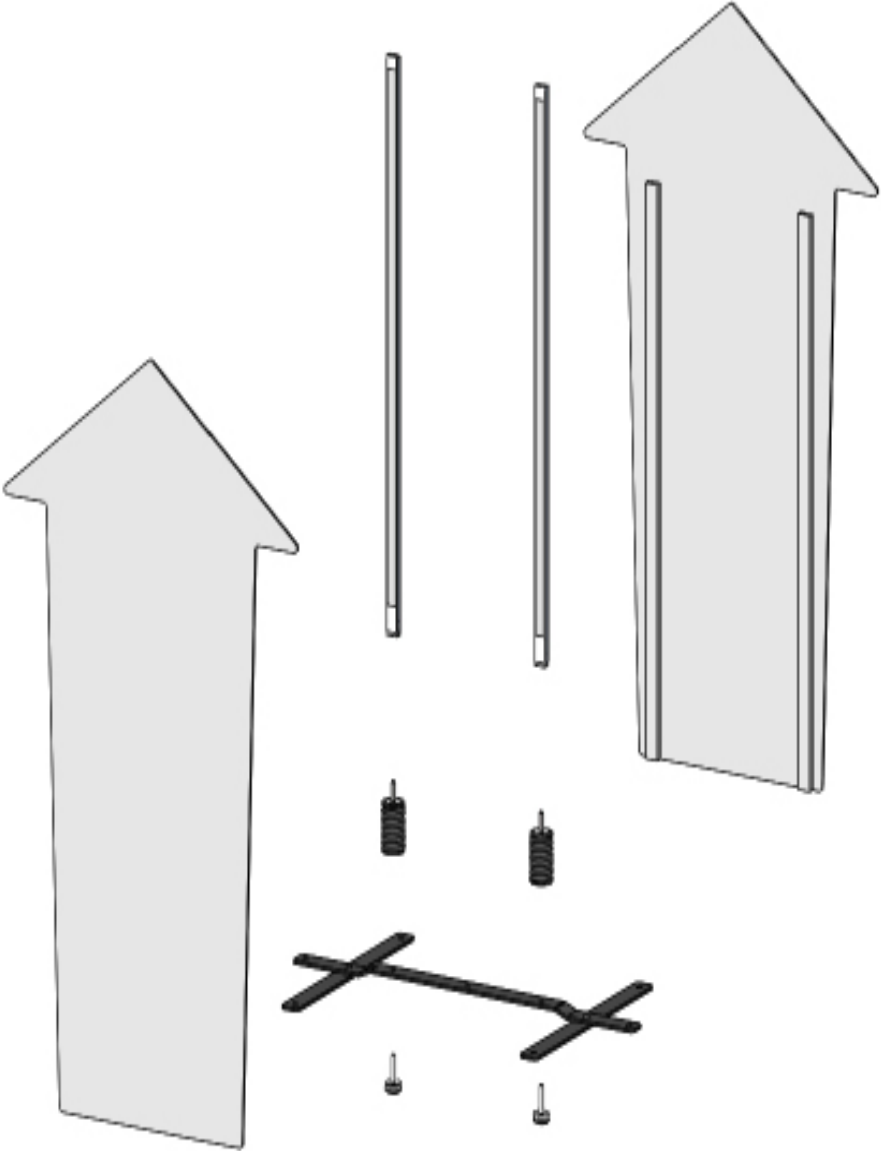


CONTOUR-1-G **CONTOUR-2-G** **CONTOUR-3-G**

CONTOUR-4-G **CONTOUR-5-G** **CONTOUR-6-G**

*All graphics sold separately.

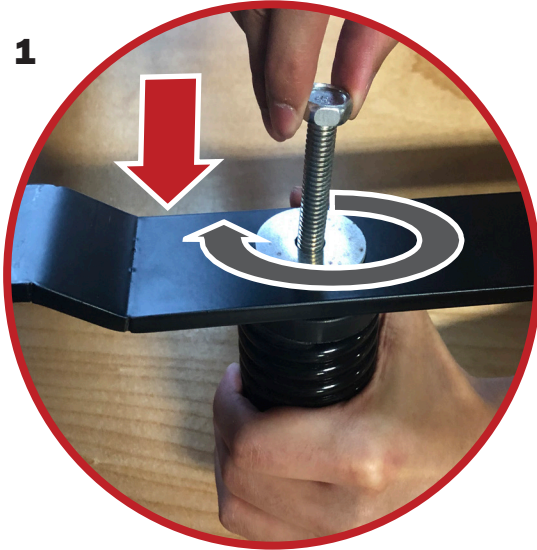
(x2)



How to Assemble your Base:

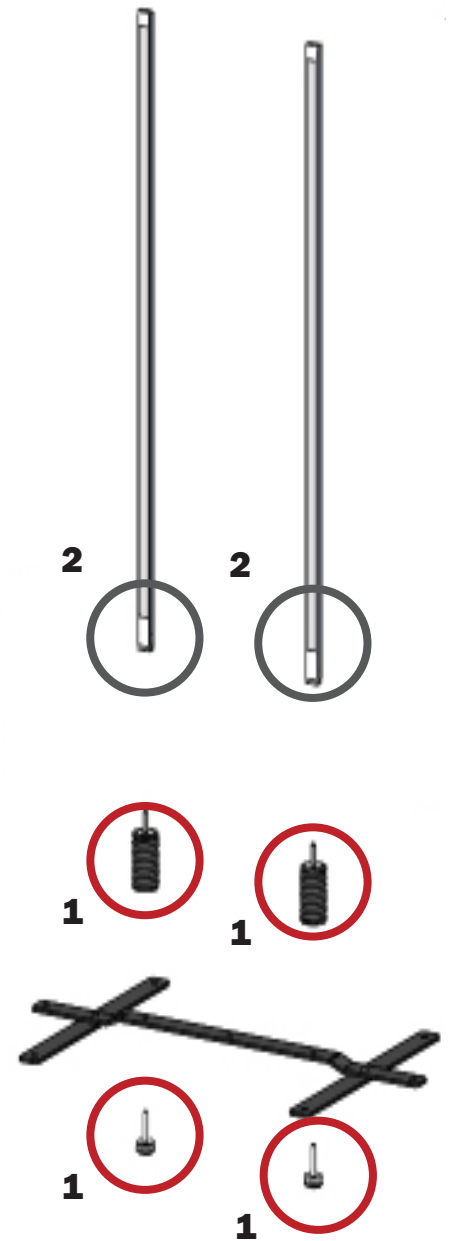
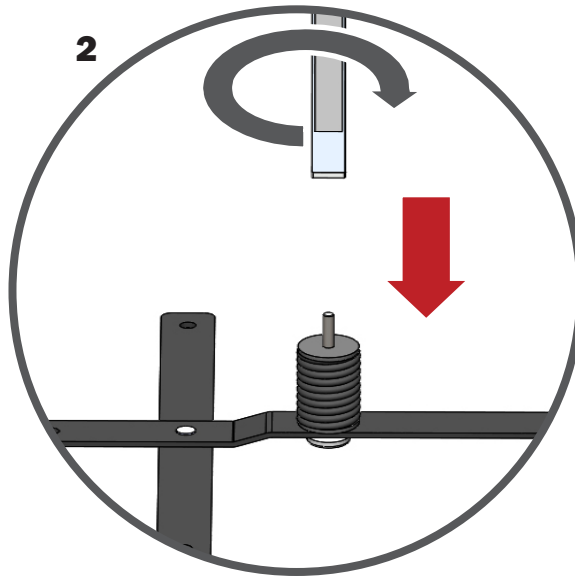
Step 1

With the plate base upside down, tighten the screw through the washer and into the spring, until the springs are fully attached. Repeat for both sides.

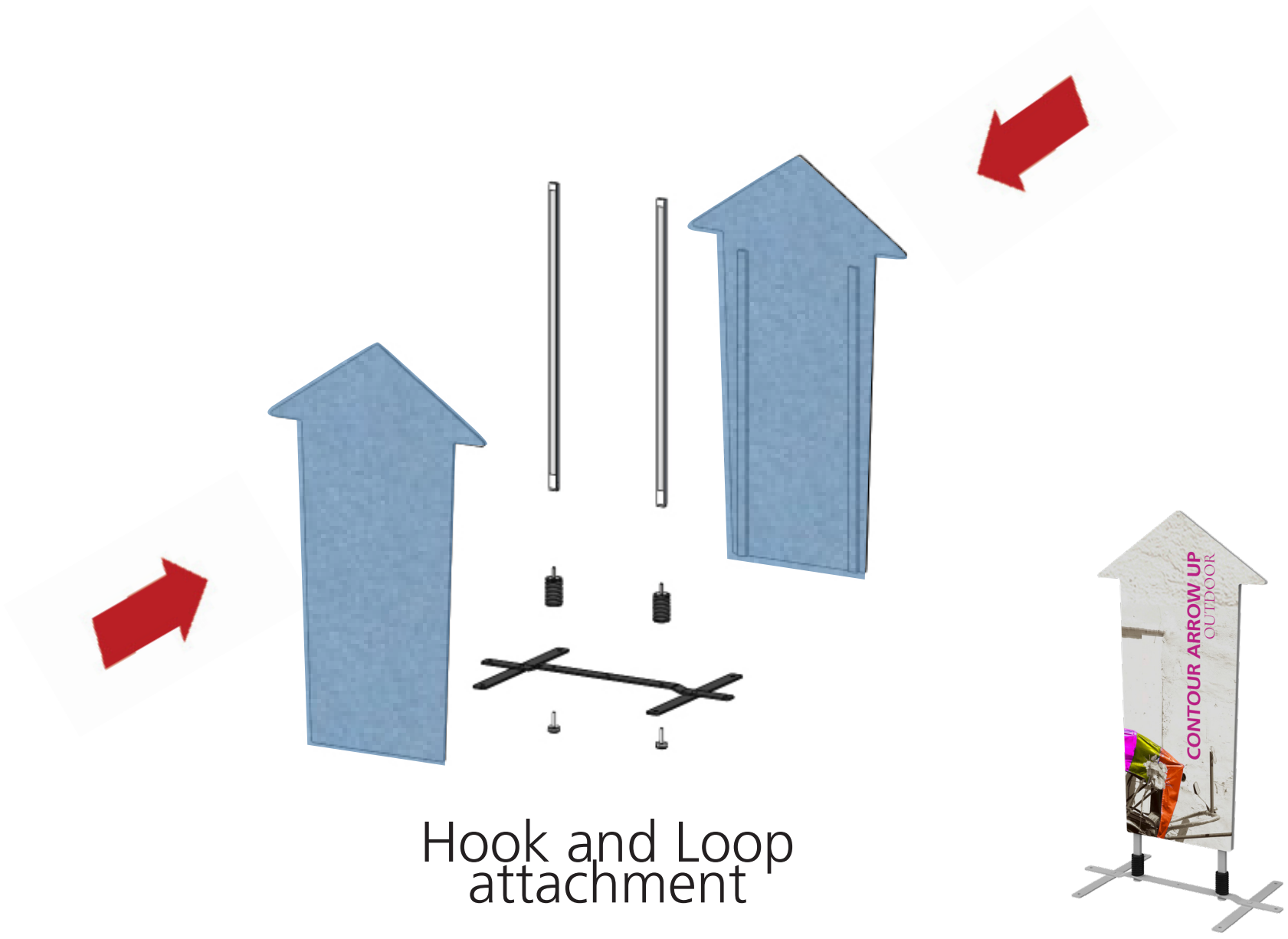


Step 2

Flip the base to its proper orientation, and attach the extrusion posts by threading them onto the screws/springs. Repeat for both sides.



How to Attach your Graphic:



Hook and Loop attachment

Standard Graphic Options

Custom Shapes Available



CONTOUR-01-G



CONTOUR-02-G



CONTOUR-03-G



CONTOUR-04-G



CONTOUR-05-G



CONTOUR-06-G