

# Artist's Choice

Cone 05

A-34

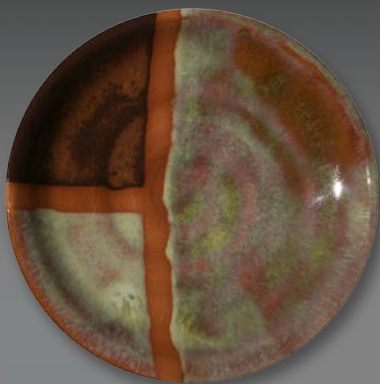
over

# Opalescents

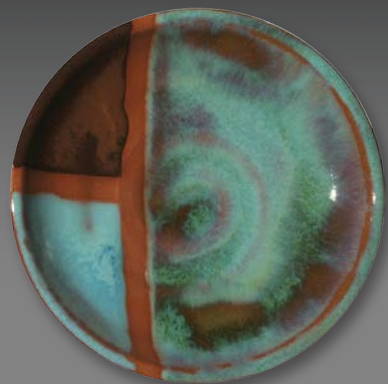
**A-34 Layering Notes:** Apply two base coats of Opalescents. (Allow glaze to dry between coats.) Apply one coat of Artist's Choice.

**Clay:** AMACO® Red Clay No. 67

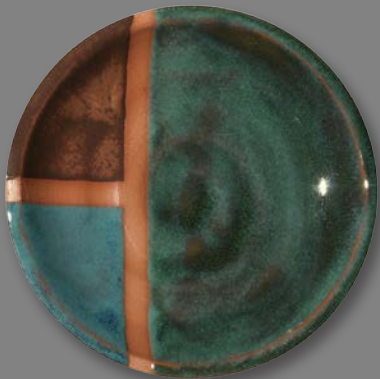
A-34  
Sand  
Bar  
—  
O-12  
Tawny



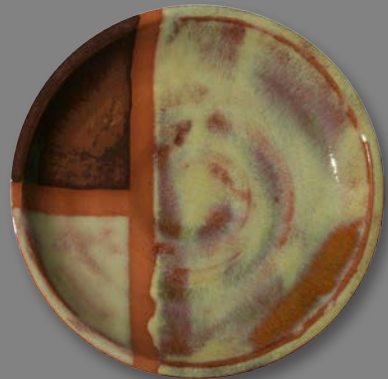
A-34  
Sand  
Bar  
—  
O-20  
Bluebell



A-34  
Sand  
Bar  
—  
O-26  
Turquoise



A-34  
Sand  
Bar  
—  
O-30  
Autumn  
Leaf



A-34  
Sand  
Bar  
—  
O-54  
Dusty  
Rose



A-34  
Sand  
Bar  
—  
O-57  
Mottled  
Burgundy





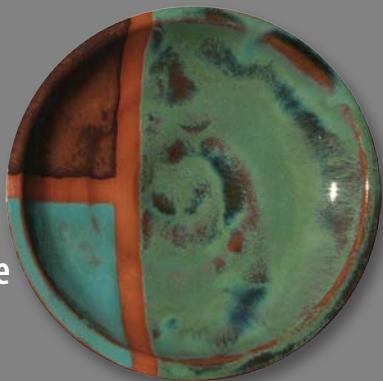
America's Most Trusted Glazes™

# Reduction Looks At Low Fire

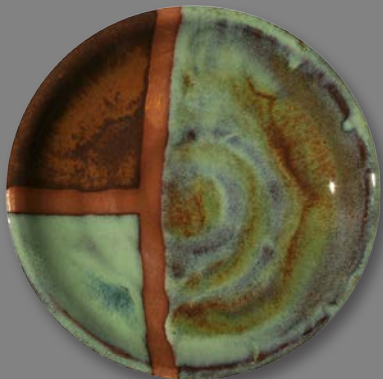
A-34  
Sand  
Bar  
—  
O-11  
White  
Clover



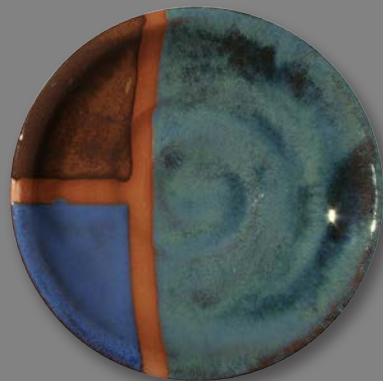
A-34  
Sand  
Bar  
—  
O-21  
Aquamarine



A-34  
Sand  
Bar  
—  
O-42  
Moss  
Green



A-34  
Sand  
Bar  
—  
O-23  
Sapphire  
Blue



A-34  
Sand  
Bar  
—  
O-52  
Fuchsia



A-34 Sand Bar over O-30 Autumn Leaf,  
O-42 Moss Green, O-21 Aquamarine,  
O-26 Turquoise, O-23 Sapphire Blue  
Accents: LG-58 Brilliant Red

[www.amaco.com/05layering](http://www.amaco.com/05layering)