

RING SIZE GUIDE

USING THE SIZE GUIDE

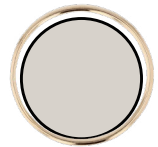
1. Select a ring that fits the intended finger.
2. Place the ring and match the **INSIDE** circle circumference with the closest size.

SARAH & SEBASTIAN uses the International Standard (ISO 8653) to define our ring sizes, based on measuring the inside circumference using a mandrel.

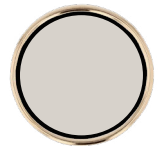
Our rings are available in SARAH & SEBASTIAN's standard sizing 48mm, 52mm & 56mm (women) and 56mm, 60mm & 64mm (men).



Select smaller size



Select larger size



Correct ring size

BESPOKE

Bespoke options for rings under \$795 are limited to fine wire ring designs only.

To determine if a ring is wire, the bespoke option should be visible under 'Add to Cart' on the product page.

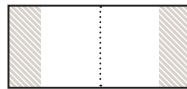
Bespoke fees apply on any size requests.

WEDDING BANDS

Most of our wedding bands are made with a comfort fit. Due to the nature of this fit, we recommend choosing a size that is a half size smaller than your standard fit ring size.



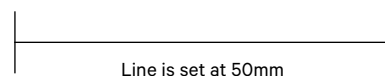
Comfort fit



Standard profile

SCALE CHECK

Before using the size guide, make sure you have printed it at 100%. You can check the size by placing a ruler on the line and measuring 50mm (5cm).



Line is set at 50mm

44mm F	49mm J 1/2	54mm N 1/2	58.5mm R	62.5mm T 1/2	66.5mm X
44.5mm F 1/2	49.5mm K	54.5mm O	59mm R 1/2	63mm U	67mm X 1/2
45mm G	50mm K 1/2	55mm O 1/2	59.5mm	63.5mm U 1/2	67.5mm Y
45.5mm G 1/2	50.5mm L	55.5mm P	60mm S	64mm V	68mm Y 1/2
46mm H	51mm	56mm -	60.5mm S 1/2	64.5mm -	68.5mm -
46.5mm -	51.5mm L 1/2	56.5mm P 1/2	61mm -	65mm V 1/2	69mm Z
47mm H 1/2	52mm M	57mm O	61.5mm T	65.5mm W	69mm Z 1/2
47.5mm I	52.5mm M 1/2	57.5mm Q 1/2	62mm -	66mm W 1/2	
48mm I 1/2	53mm N	58mm -	62mm -	66mm W 1/2	
48.5mm J	53.5mm -	58mm -	62mm -	66mm W 1/2	

PLEASE NOTE: Sizes indicated by a white ring are the standard sizes available at SARAH & SEBASTIAN.

RING SIZE CONVERSION

S&S SIZE (ISO STANDARD, INSIDE CIRCUMFERENCE)	UK/AUSTRALIA	UK TO ISO PRECISE CONVERSION	US/CANADA
44	F	44.14	3
44.5	F 1/2	44.45	3 1/8
45	G	45.11	3 3/8
45.5	G 1/2	45.74	3 5/8
46	H	46.02	3 3/4
46.5	-	-	-
47	H 1/2	46.68	4
47.5	I	47.25	4 1/4
48	I 1/2	48	4 1/2
48.5	J	48.38	4 5/8
49	J 1/2	49.32	5
49.5	K	49.64	5 1/8
50	K 1/2	50.27	5 3/8
50.5	L	50.58	5 1/2
51	-	-	-
51.5	L 1/2	51.55	5 7/8
52	M	51.87	6
52.5	M 1/2	52.5	6 1/4
53	N	53.16	6 1/2
53.5	-	-	-
54	N 1/2	53.82	6 3/4
54.5	O	54.51	7
55	O 1/2	54.82	7 1/4
55.5	P	55.76	7 1/2
56	-	-	-
56.5	P 1/2	56.45	7 3/4
57	Q	57.15	8
57.5	Q 1/2	57.65	8 1/4
58	-	-	-

S&S SIZE (ISO STANDARD, INSIDE CIRCUMFERENCE)	UK/AUSTRALIA	UK TO ISO PRECISE CONVERSION	US/CANADA
58.5	R	58.47	8 5/8
59	R 1/2	59.06	8 7/8
59.5	-	-	-
60	S	60	9 1/8
60.5	S 1/2	60.66	9 3/8
61	-	-	-
61.5	T	61.29	9 5/8
62	-	-	-
62.5	T 1/2	62.33	10
63	U	62.89	10 1/4
63.5	U 1/2	63.46	10 1/2
64	V	63.84	10 5/8
64.5	-	-	-
65	V 1/2	64.97	11
65.5	W	65.22	11 1/8
66	W 1/2	65.78	11 3/8
66.5	X	66.54	11 5/8
67	X 1/2	66.92	11 7/8
67.5	Y	67.51	12
68	Y 1/2	68.14	12 1/4
68.5	-	21.8	-
69	Z	68.77	12 1/2
69.5	Z 1/2	69.43	12 3/4

Use this table to find your SARAH & SEBASTIAN ring size.
Please contact info@sarahandsebastian.com if you require assistance.