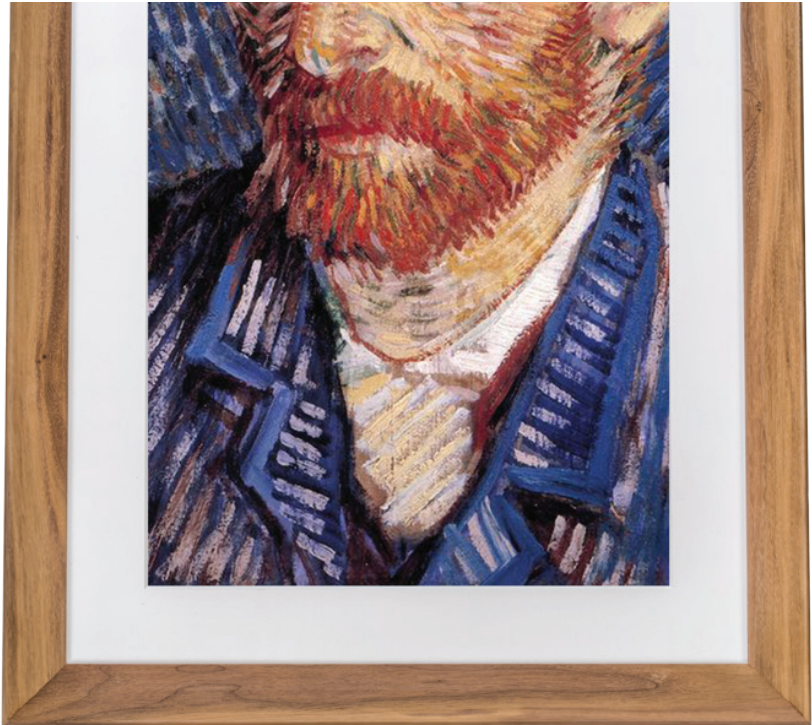




MEURAL™
c a n v a s



Setup Guide

Welcome to the Meural Community

Meural combines the best of art, technology, and design to create products that make us feel something. It's our goal to make art universally accessible, and to help the arts thrive—a mission you're now a part of. To help get you started, here's a brief manual on setting up and using your Meural Canvas.

A handwritten signature in black ink, appearing to read 'Vukobrat Vukobrat', positioned above the name 'Vukobrat Vukobrat'.

Co-founder of Meural

Table of Contents

02

Welcome

04

Connecting your Canvas

07

Hanging your Canvas

10

Resources

11

Technical specs

Visit meural.com/setup for full walkthrough

Connect your Meural Canvas to Wi-Fi.

1. Download the Meural app
2. Turn your Canvas on
3. Follow the instructions on your Canvas

Once you're connected to Wi-Fi, you can control your Canvas in three ways: the Meural app, gesture control, and my.meural.

Using the Meural app

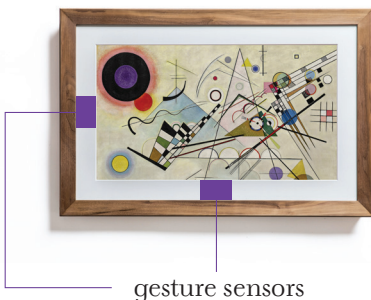
Even after you connect to Wi-Fi, the Meural app will continue to be useful in choosing artwork for your space, changing Canvas settings, and more.

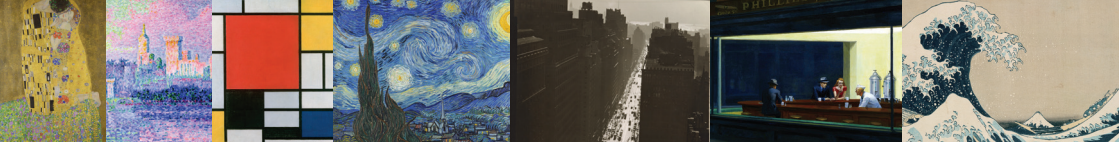


Gesture control

meural.com/videos#gesture

When using your Meural Canvas, you don't touch the frame itself—just like gallery art. Instead, you wave right, left, up, and down across the gesture sensor (about 1" in front of it).

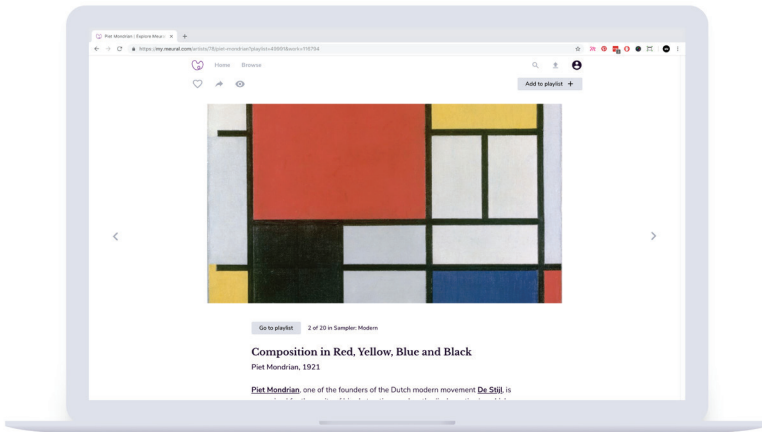




my.meural.com

You'll use “my.meural” to browse and curate art, as well as change your Canvas settings. On the top right, click on the user icon to access the Scheduler, settings (including light sensitivity, image duration, and more), and your playlists.

my.meural is also a great way to discover new art. Every week our curatorial team adds new artists, playlists, and editorial, so be sure to check in and see what's new. To get unlimited access to all of it, make sure to become a Meural Member (find out more at meural.com/membership).



Hanging Your Canvas*

For a video walkthrough, visit meural.com/setup

To mount the Meural Canvas on your wall, you'll need:



Tape measure



Pencil



Drill



1/4 inch drill bit



Hammer



Phillips head screwdriver

We provide you with these hanging parts:



Hanging cleat



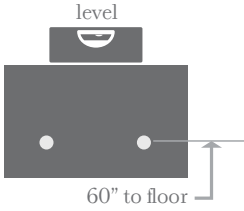
Screws (with anchors)



Level

*these instructions are intended for drywall

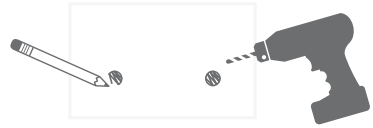
1.



Center and level your cleat.
We recommend a height of 5'
(60") from the floor to the holes
on the cleat.

2.

Mark the holes in pencil
and drill 0.25" pilot holes
2.5" deep for both.



3.



Separate the screws from
the anchors and hammer
the anchors into the holes.

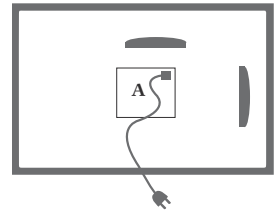
4.



Confirm the orientation of the cleat and, with the screws, attach it to your wall.

5.

Plug the power cord's connector into the back **(A)** of the frame.



6.

Hang the Meural Canvas by letting the cleats rest in the metal flaps in the back of the frame.

Visit meural.com/setup for full walkthrough



Contact us

Thank you for joining our community. To get help, check out our latest FAQs at support.meural.com. We recommend that you use only official Meural support resources.

For questions, email us at support@meural.com.

Our customer support team is available Monday–Friday, 10am–6pm ET, at **1-888-706-3872**

Follow us:





Technical specs

Standard Frame Dimensions - 29"x 19"x 1.6"

27" IPS Display with Anti-Glare Technology

1920 x 1080 Full HD Resolution

300 cd/m² Brightness

1.8 GHz Quad Core ARM Cortex-A17

2GB DDR3 RAM

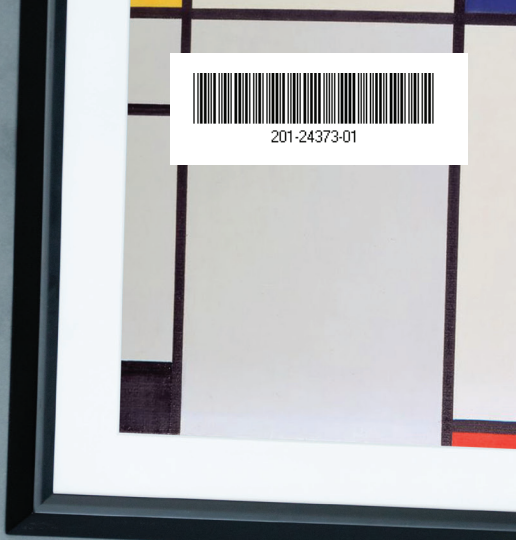
8GB Capacity

802.11 a/b/g/n/ac Wi-Fi (supports 2.4GHz and 5GHz)

NETGEAR, Inc.
350 E. Plumeria Drive
San Jose, CA 95134 USA

© 2018 NETGEAR, Inc. NETGEAR, the NETGEAR logo, Meural, and the Meural palette logo are trademarks of NETGEAR, Inc. Any other trademarks on this packaging are for reference purposes only.

The Apple logo and App Store are trademarks of Apple Inc., registered in the U.S. and other countries. Google Play and the Google Play logo are trademarks of Google LLC.



201-24373-01



POWERED BY
NETGEAR[®]