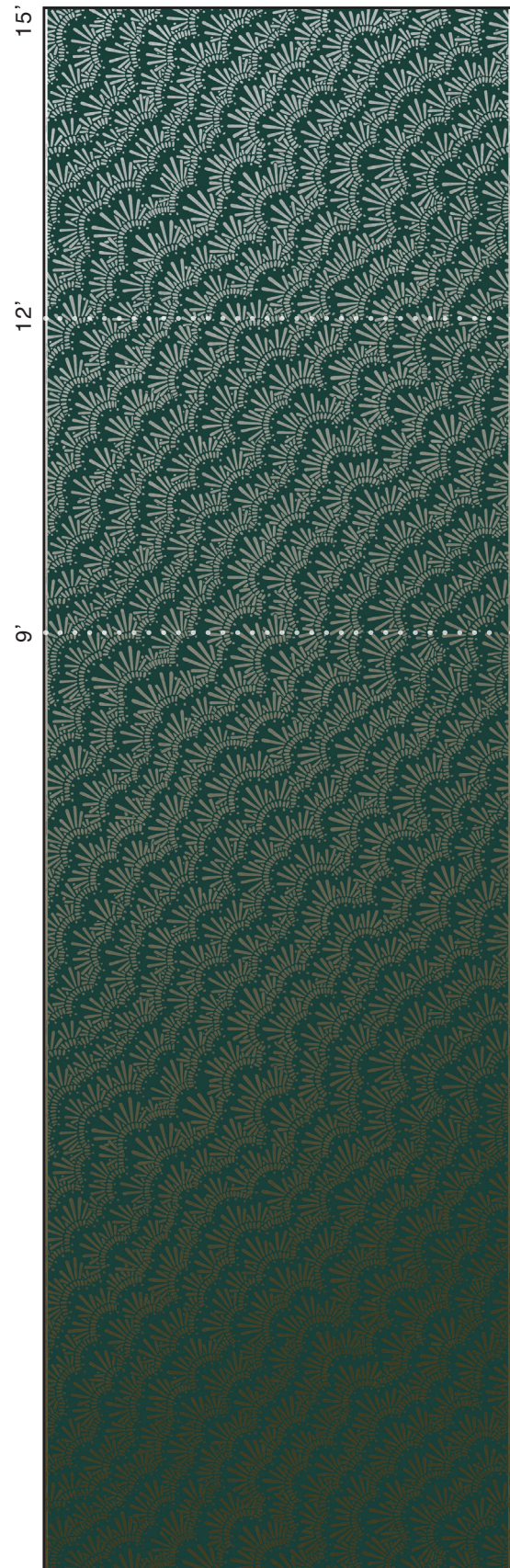


PRODUCT DETAILS

WALLCOVERING PANELS

PATTERN:	LICHEN
COLORWAY:	OAK
ITEM #:	LNO5
SUBSTRATE:	COMMERCIAL TYPE II MYLAR/VINYL <i>RESIDENTIAL AVAILABLE</i>
PANEL LENGTHS:	9'H / 12'H / 15'H <i>LONGER AVAILABLE</i>
REPEAT:	52" X 52"
MATERIAL WIDTH:	54" <i>UNTRIMMED</i>
STRAIGHT MATCH	
½" BLEED + ½" SELVAGE	
DIGITAL PRINT	
REFER TO SAMPLE FOR ACCURATE COLOR.	
PRINT TO ORDER. SLIGHT COLOR VARIATIONS BETWEEN PRINT RUNS.	
NOTES:	



54" (UNTRIMMED)

TYPE II MYLAR/VINYL SUBSTRATE SPECS.

COMMERCIAL

GENERAL		LAST UPDATED: 11/28/2018
DESCRIPTION	COMMERCIAL GRADE, WIDE-FORMAT WALLCOVERING MEDIA	
CONSTRUCTION	MULTI-PLY VINYL/MYLAR CONSTRUCTION WITH NON-WOVEN BACKING	
MATERIAL WIDTH	54"	
WEIGHT	TOTAL: POLYESTER/VINYL WEIGHT: FABRIC WEIGHT: ADHESIVE:	20 OZ / LINEAL YARD 16.8 OZ / LINEAL YARD 2.7 OZ / LINEAL YARD 0.5 OZ / LINEAL YARD
THICKNESS	17 MIL.	
APPLICATION	STANDARD COMMERCIAL WALLCOVERING PASTES, PRIMERS AND TECHNIQUES FOR INDOOR USE IN ENVIRONMENTALLY CONTROLLED SPACES	

TESTS / CERTIFICATIONS / QUALITIES		
FEDERAL SPECIFICATION	CCC-408-D TYPE II CLASS A	
WA SPECIFICATION	W-101 TYPE II	
FIRE TEST RATING	MEETS OR EXCEEDS REQUIREMENTS FOR FLAME SPREAD, SMOKE DEVELOPED AND FLASHOVER. ASTM-E84 TUNNEL TEST NFPA LIFE SAFETY CODE 101 EU CLASS FLAME (EN 15102) CAN/ULC S102	CLASS A CLASS A PASSED CLASS B, S2 PASSED ALL REQUIREMENTS
MOLD/MILDEW RESISTANCE	ASTM-G21 SPECIFICATIONS, PASSED ALL REQUIREMENTS	
INDOOR AIR QUALITY	MANUFACTURED WITH LOW VOC VINYL CALIFORNIA CDPH STANDARD FOR SCHOOLS + OFFICES TESTED PER CA-1350 WA CERTIFIED NSF/ANSI 342 SUSTAINABILITY STANDARD	
ADDITIONAL NOTES	MANUFACTURED WITHOUT THE USE OF BROMINATED FLAME RETARDANTS MEETS OR EXCEEDS EU TOXICITY STANDARD EN12149 A, B, C FOR HEAVY METALS AND FORMALDEHYDE NON-WOVEN BACKING CONTAINS 50% POST-CONSUMER RECYCLED CONTENT	