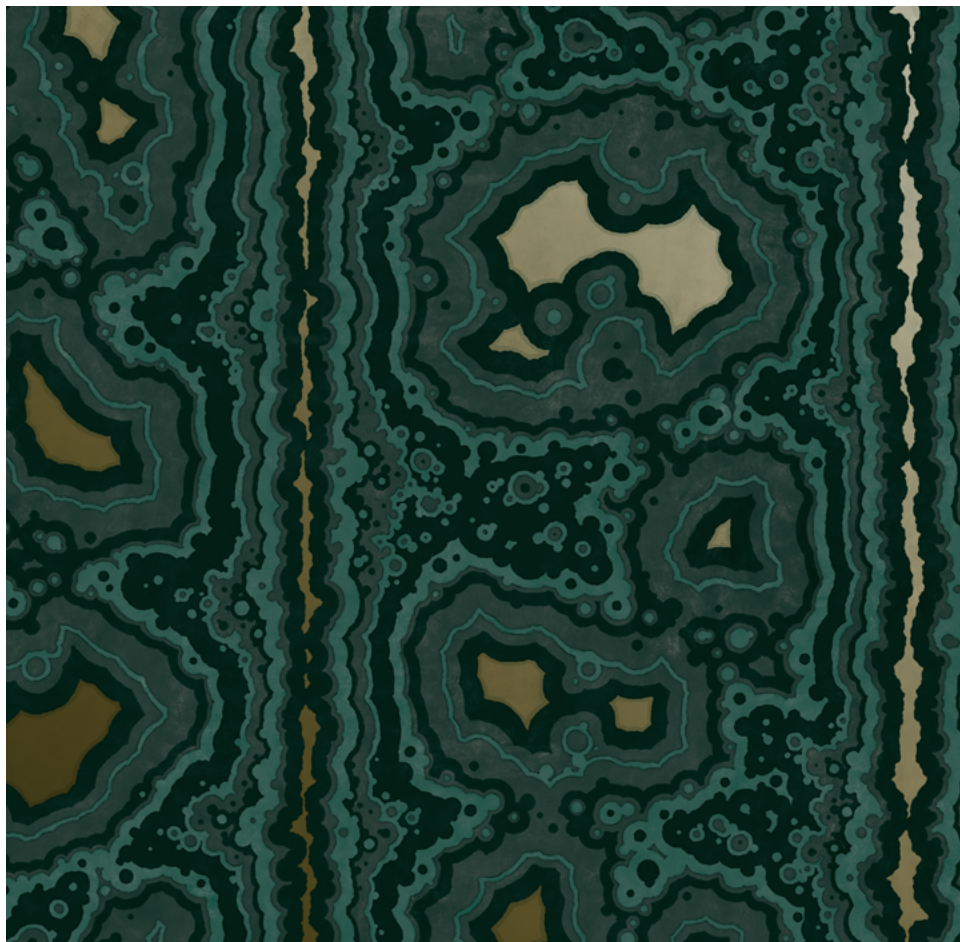


GEODE

in Viridi

Faye Bell





GEODE *in Viridi*

SKU: GD05

A durable Type II wallcovering with metallic features suitable for use in commercial and residential spaces

Design Format

Large repeat that is sold on panels at lengths of 9', 12' and 15'+

Repeat

52" W x 39" H

Match

Straight Match

Material Width

52" Wide Trimmed

Ships 54" Untrimmed

Grounds

Type II Mylar / Vinyl (See p.4 for details)

Non-vinyl customization available

Stock

Print to order

Lead Time

4-6 weeks to ship

Rush available

Minimum Order

5 yds

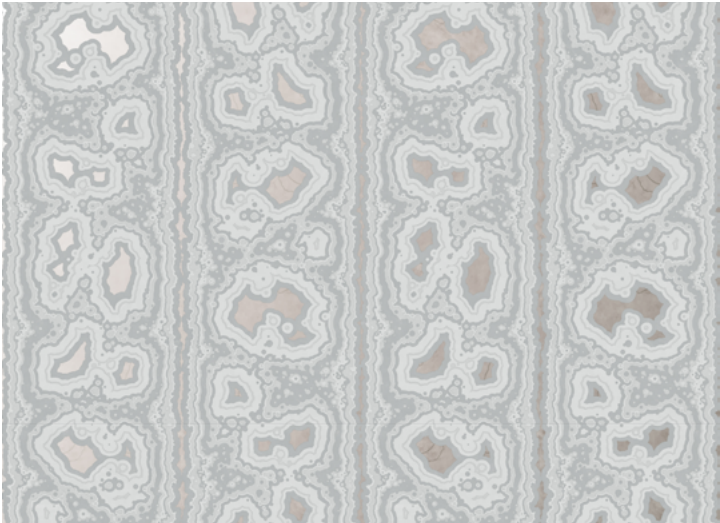
Fully Customizable

Ordering

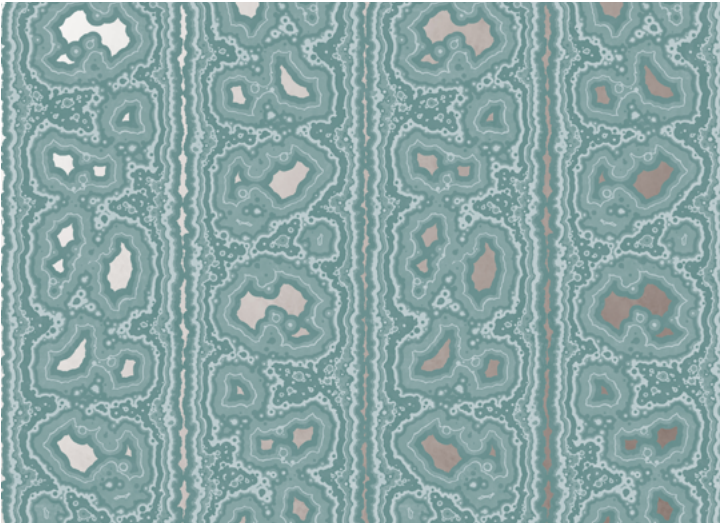
We love to help! Reach out to us at info@fayebell.com OR estimate quantities in real time & submit for a quote using our online calculator.

GEODE

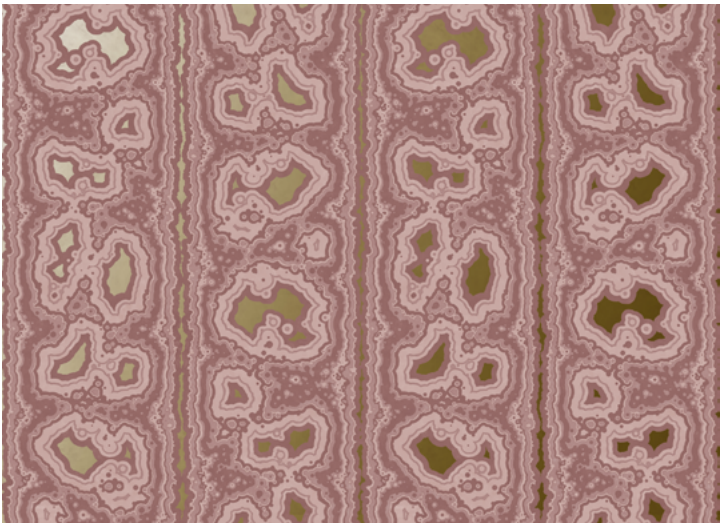
Available Colorways



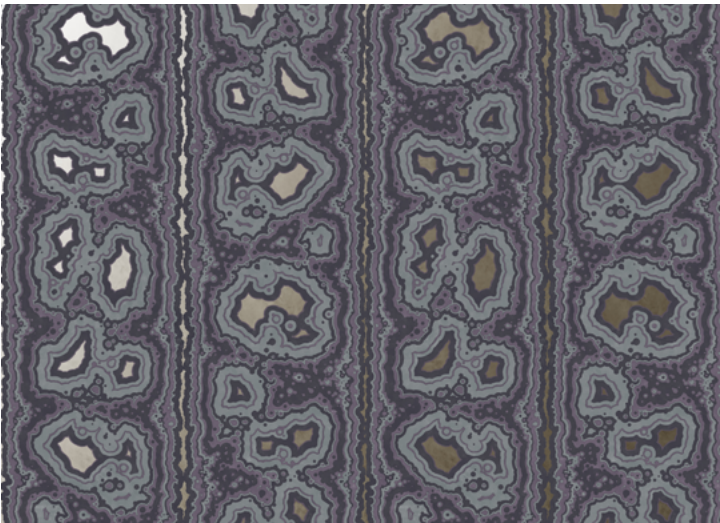
Selenite • GD01



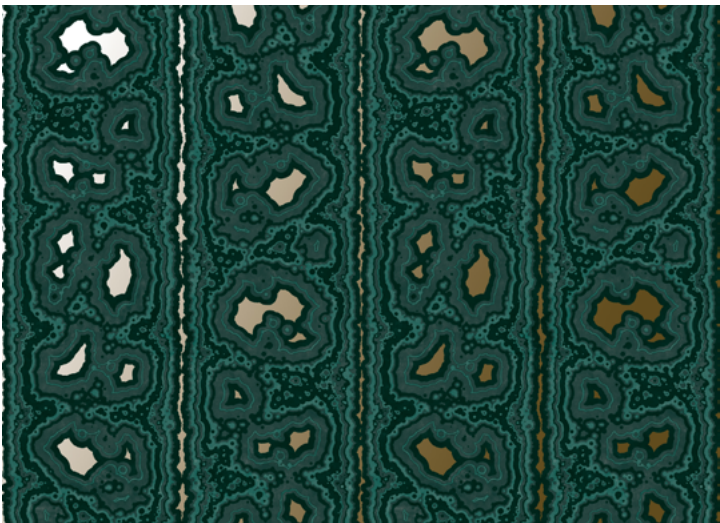
Jade • GD02



Sunstone • GD03



Amethyst • GD04



Viridi • GD05

SPECIFICATIONS FOR TYPE II MYLAR/ VINYL GROUNDS

Commercial grade vinyl wallcovering media intended for indoor use in environmentally controlled spaces

Construction

Polyester/vinyl face with non-woven backing

Installation

Standard commercial wallcovering pastes, primers and techniques

Packaging

3" core / wound print side out / shipped in heavy-duty cardboard

Weight

20oz. per lineal yard / 13 oz. per sq yd / 457g/m²

Thickness

Thickness 0.017in to 0.022in. / 0.432mm to 0.559mm

Environmental Properties:

- NSF-342 / Certified for Silver compliance
- HPD / Health Product Declaration available
- EPD / Environmental Product Declaration available / UL third party certified for wallcovering industry average
- Low VOC / Meets California CDPH Standard for Schools and Offices when tested to CA 01350
- Contributes to LEED v4
- Meets or exceeds EU Toxicity standard EN 12149 A,B,C for heavy metals and formaldehyde
- Phthalate free formulation
- Prop 65 compliant
- Manufactured without the use of Brominated flame retardants
- 11% post-consumer content in total product – using recycled polyester, cellulose
- 100% of backing fiber content is post-consumer fiber

Federal Specification

CCC-408-D Type II

WA Specification

WA-101 , NSF/ANSI 342 Sustainability Standard

NFPA Life Safety Code 101

Meets or exceeds requirements for flame spread, smoke developed and flashover

Testing

- ASTM-E84 Tunnel Test / Passed Class A
- EU Class Flame (EN15102) / Passed Class B, s2
- BS476 Parts 6&7 / Passed all requirements
- CAN/ULC-S102 / Passed all requirements

Mold / Mildew

ASTM-G21 Specifications / Passed all requirements

Type II Properties

Passes all criterion for WA 101 Type II:

- Break Strength
- Tear Strength
- Cold Crack
- Heat Aging
- Shrinkage
- Stain Resistance
- Coating Adhesion (Bond)
- Colorfastness
- Washability
- Scrubability
- Blocking
- Crocking