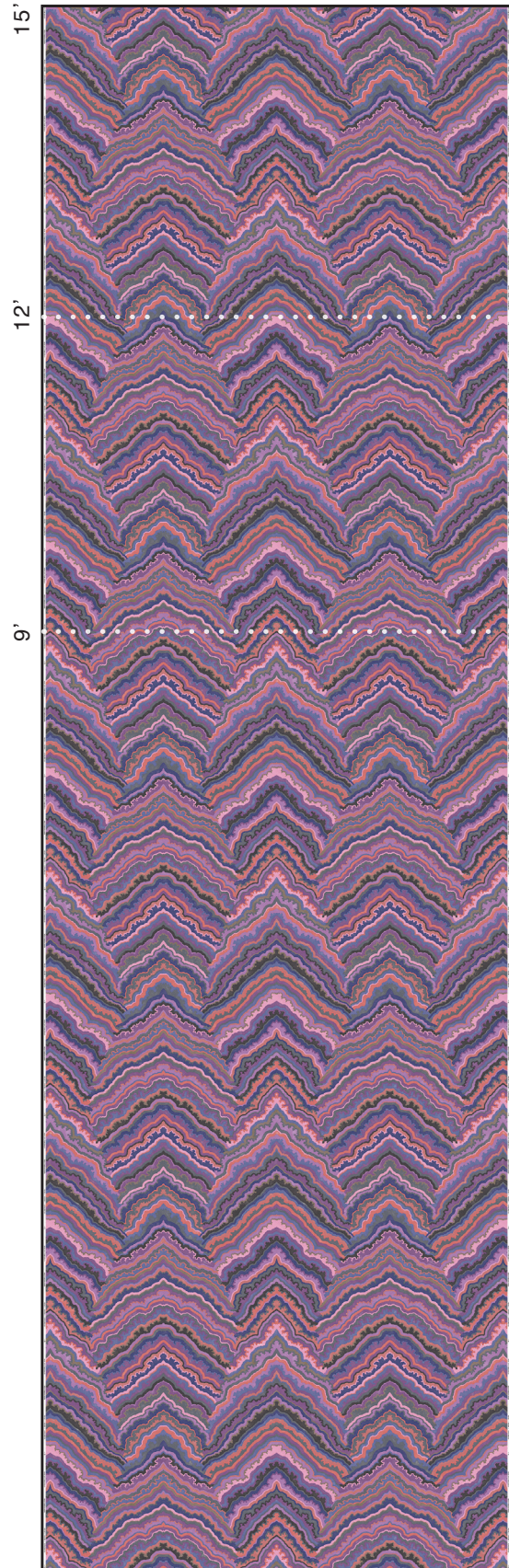


# PRODUCT DETAILS

## WALLCOVERING PANELS

PATTERN:	FLORENCE
COLORWAY:	FRIDA
ITEM #:	FL06
SUBSTRATE:	COMMERCIAL TYPE II MYLAR/VINYL <i>RESIDENTIAL AVAILABLE</i>
PANEL LENGTHS:	9'H / 12'H / 15'H <i>LONGER AVAILABLE</i>
REPEAT:	52"W X 26"H
MATERIAL WIDTH:	54" <i>UNTRIMMED</i>
STRAIGHT MATCH	
½" BLEED + ½" SELVAGE	
DIGITAL PRINT	
REFER TO SAMPLE FOR ACCURATE COLOR.	
PRINT TO ORDER. SLIGHT COLOR VARIATIONS BETWEEN PRINT RUNS.	
NOTES:	



54" (UNTRIMMED)

# TYPE II MYLAR/VINYL SUBSTRATE SPECS.

COMMERCIAL

GENERAL	LAST UPDATED: 11/28/2018
DESCRIPTION	COMMERCIAL GRADE, WIDE-FORMAT WALLCOVERING MEDIA
CONSTRUCTION	MULTI-PLY VINYL/MYLAR CONSTRUCTION WITH NON-WOVEN BACKING
MATERIAL WIDTH	54"
WEIGHT	TOTAL: 20 OZ / LINEAL YARD POLYESTER/VINYL WEIGHT: 16.8 OZ / LINEAL YARD FABRIC WEIGHT: 2.7 OZ / LINEAL YARD ADHESIVE: 0.5 OZ / LINEAL YARD
THICKNESS	17 MIL.
APPLICATION	STANDARD COMMERCIAL WALLCOVERING PASTES, PRIMERS AND TECHNIQUES FOR INDOOR USE IN ENVIRONMENTALLY CONTROLLED SPACES

TESTS / CERTIFICATIONS / QUALITIES	
FEDERAL SPECIFICATION	CCC-408-D TYPE II CLASS A
WA SPECIFICATION	W-101 TYPE II
FIRE TEST RATING	MEETS OR EXCEEDS REQUIREMENTS FOR FLAME SPREAD, SMOKE DEVELOPED AND FLASHOVER. ASTM-E84 TUNNEL TEST CLASS A NFPA LIFE SAFETY CODE 101 CLASS A EU CLASS FLAME (EN 15102) PASSED CLASS B, S2 CAN/ULC S102 PASSED ALL REQUIREMENTS
MOLD/MILDEW RESISTANCE	ASTM-G21 SPECIFICATIONS, PASSED ALL REQUIREMENTS
INDOOR AIR QUALITY	MANUFACTURED WITH LOW VOC VINYL CALIFORNIA CDPH STANDARD FOR SCHOOLS + OFFICES TESTED PER CA-1350 WA CERTIFIED NSF/ANSI 342 SUSTAINABILITY STANDARD
ADDITIONAL NOTES	MANUFACTURED WITHOUT THE USE OF BROMINATED FLAME RETARDANTS MEETS OR EXCEEDS EU TOXICITY STANDARD EN12149 A, B, C FOR HEAVY METALS AND FORMALDEHYDE NON-WOVEN BACKING CONTAINS 50% POST-CONSUMER RECYCLED CONTENT