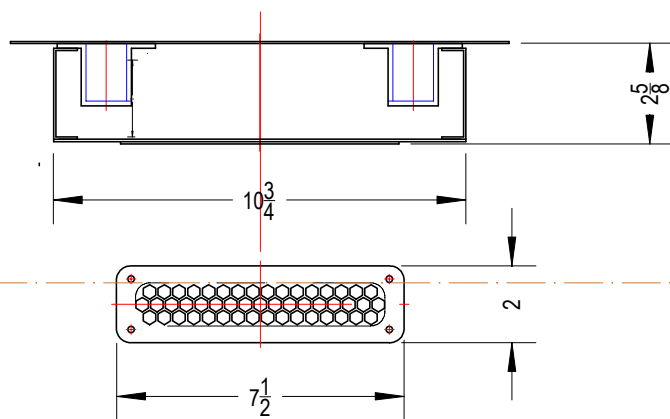


FACE PLATE THKSNSS
.048"



FOR INSTALLATION ON CABINET FACE
ROUGH OPENING 11 1/2" X 29 1/4"

ELECTRICAL CONNECTION AT CENTER OF TOP
AS NOTED "E"

AIR INTAKE IS IN BACK OF UNIT.
CHANNEL IN CABINETRY TO BE PROVIDED
FOR AIR INTAKE IN TOE-KICK AREA

120 VAC
300 W

INSTALL PER APPLICABLE ELECTRICAL CODE
BY LICENCED ELECTRICIAN



PROJECT		PUELICHE DRYER F2 LOCKER	
TITLE		INSTALL DETAILS	
DWG NO	74110	SCALE	MAR 2022
REV	0	SHEET	

4

3

2

1