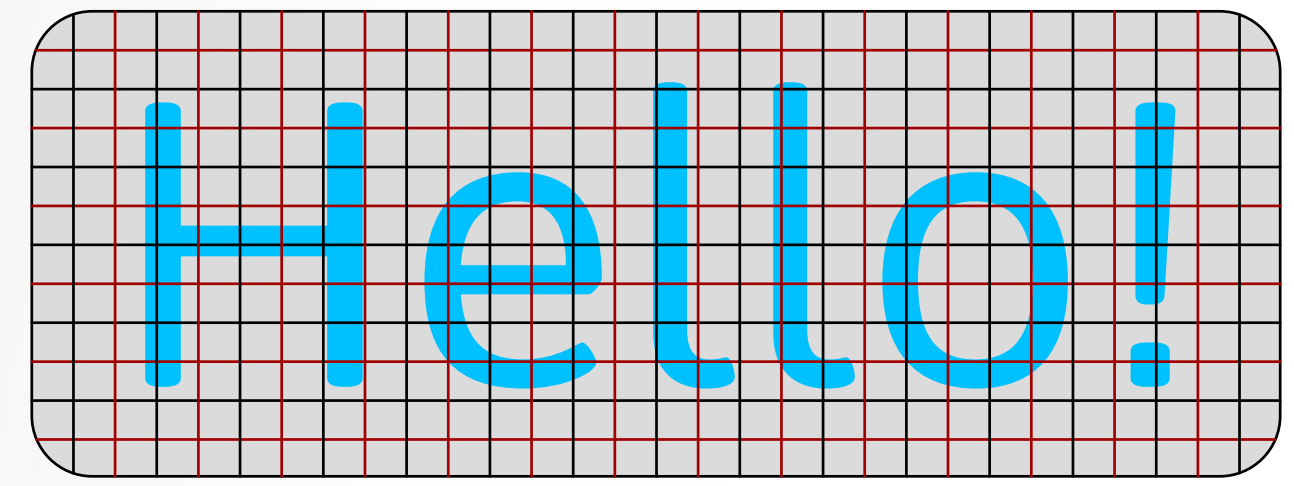




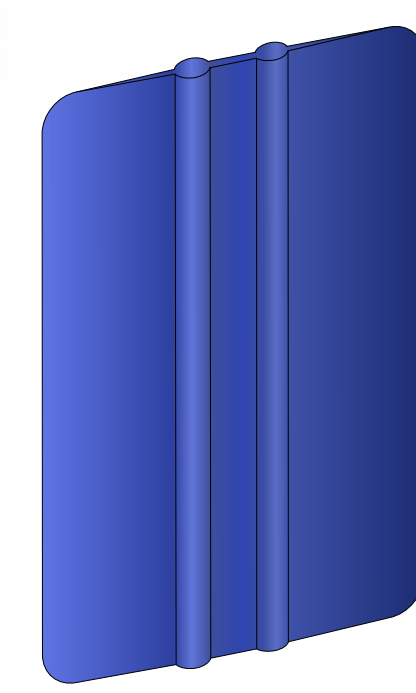
Vinyl Decal Instructions

Here we will walk through each step of applying your new Vinyl Decal.

Tools Needed:

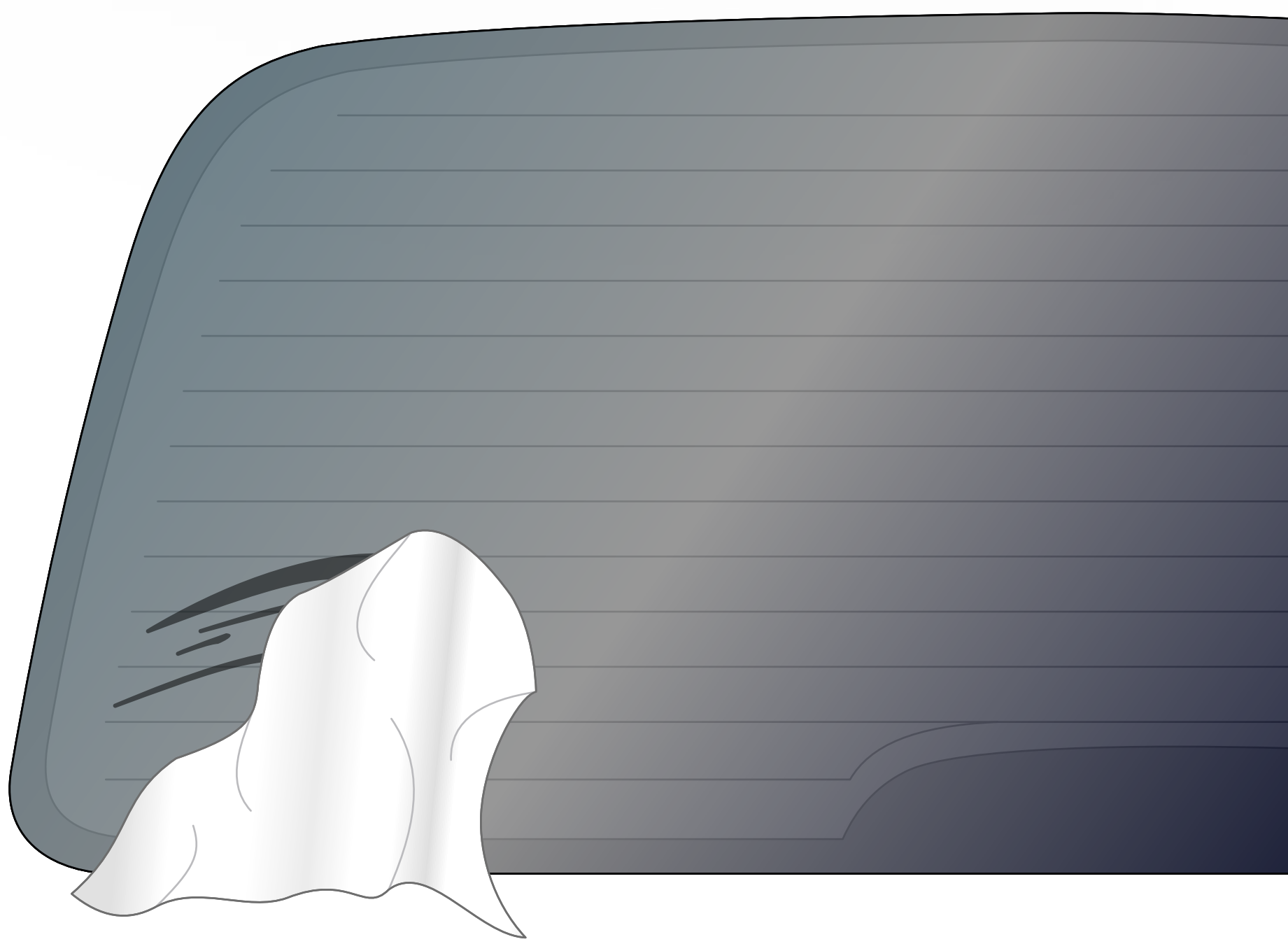


The Vinyl Decal you purchased



A Squeegee. *You can use an old credit card or plastic ruler.

Step 1:



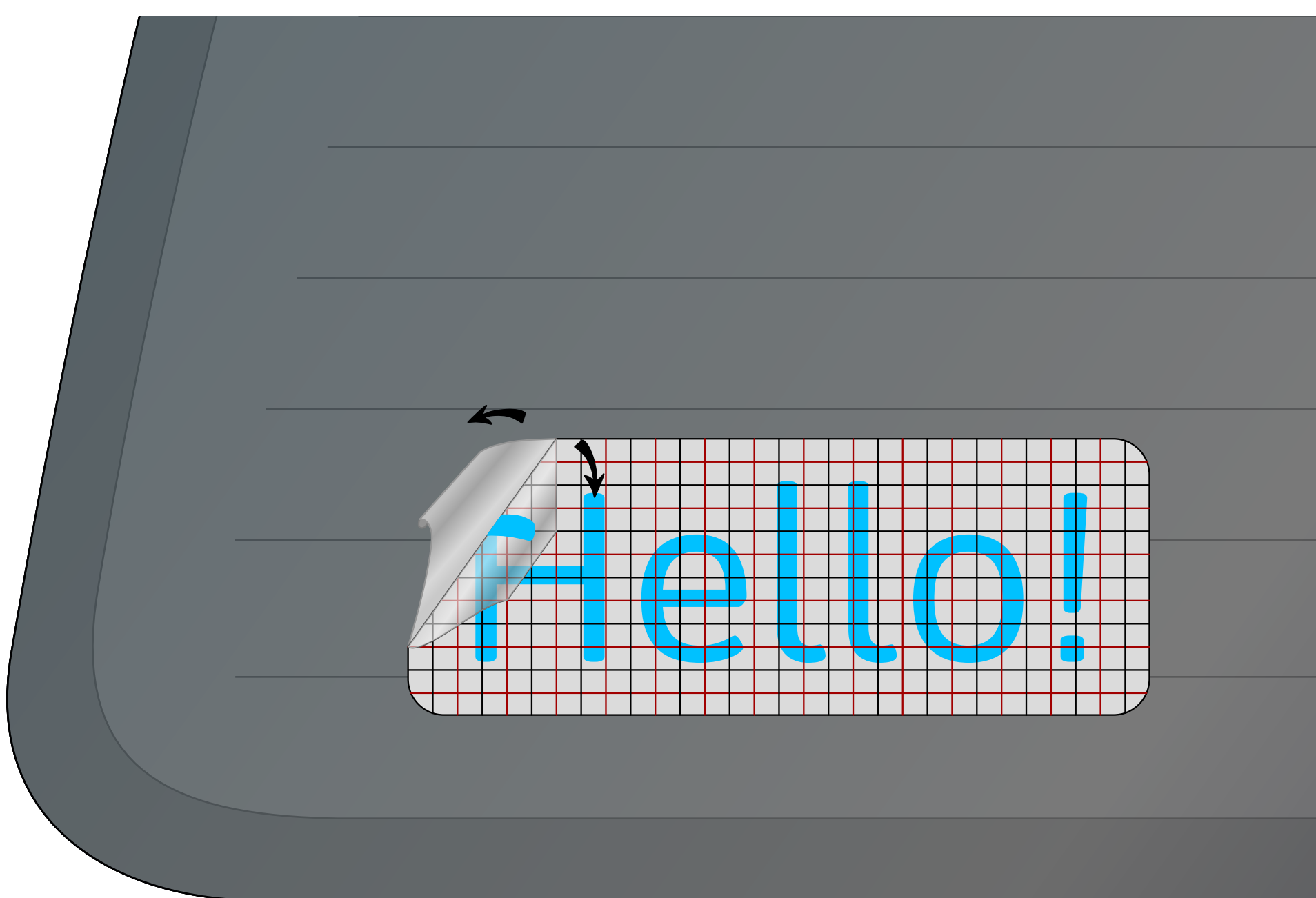
Thoroughly clean the surface where you plan to adhere your decal

Step 2:



Double check that the surface is now clean and dry. If there is any moisture from the cleaner make sure it is removed or evaporates before adhering anything.

Step 3:

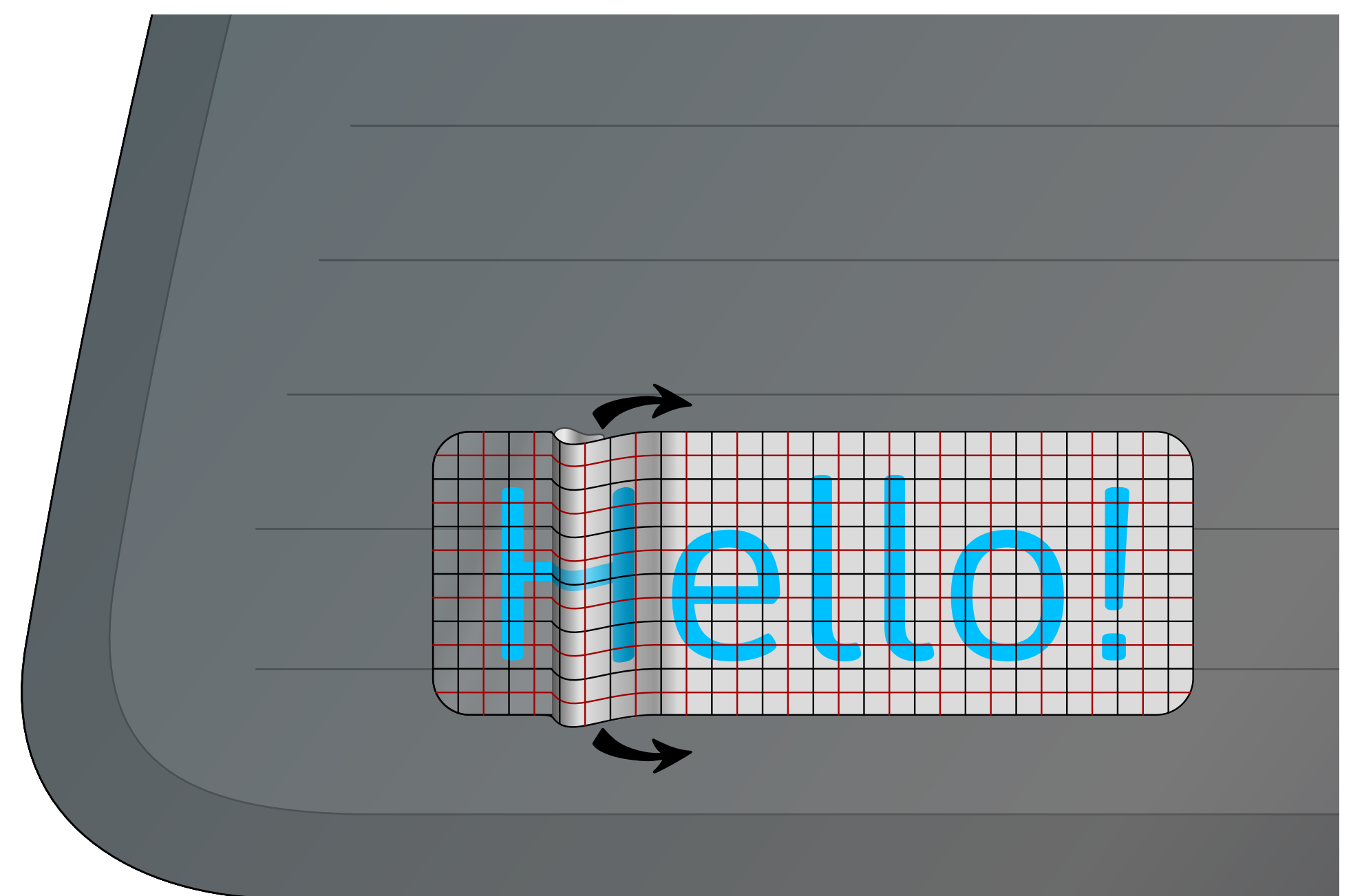


Once you have decided where you would like to place the decal, begin to carefully peel the backing paper in one corner.

*You may notice that the Vinyl Decal is sticking to the gridded transparent paper, this is good!

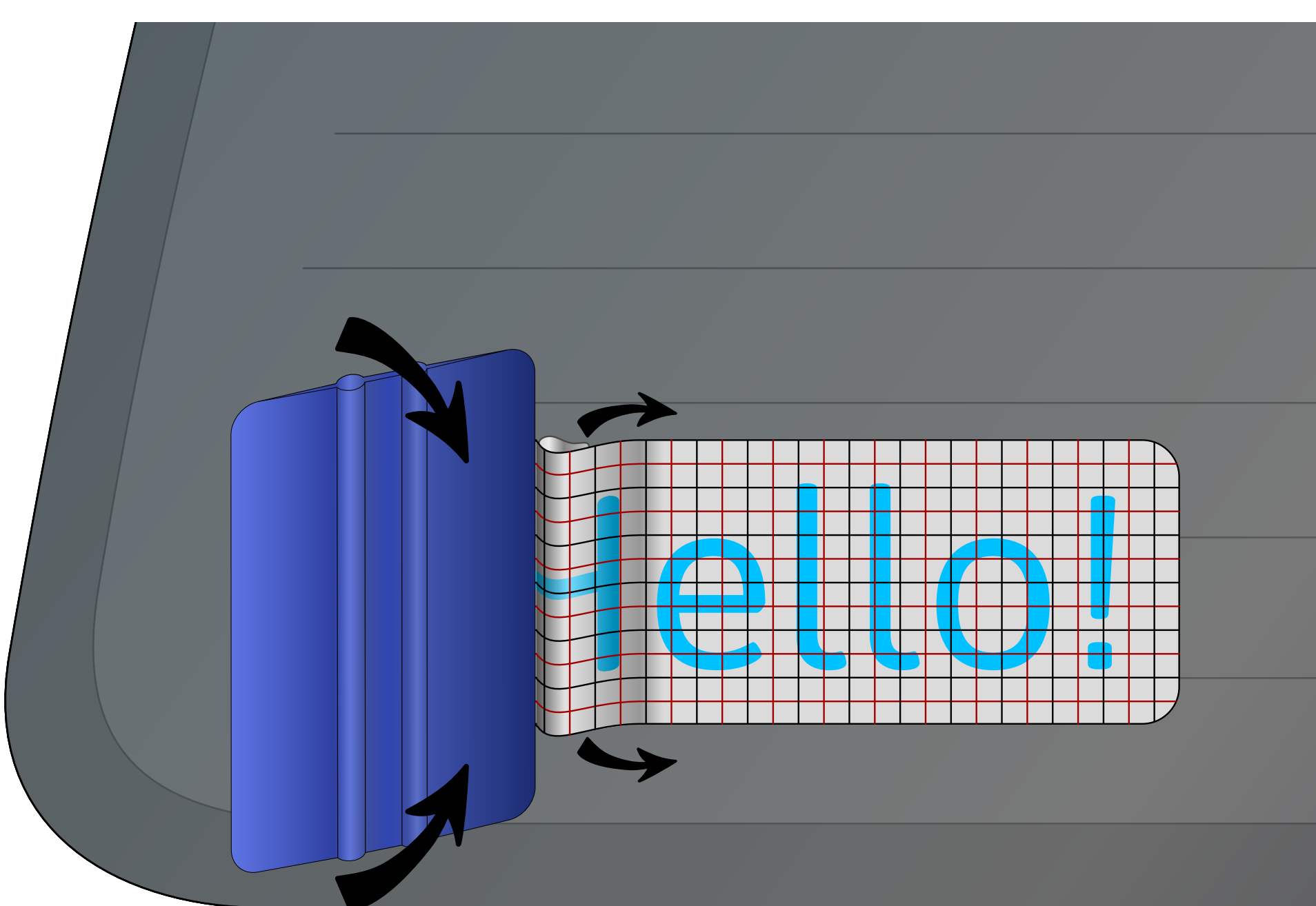
*If the Decal is only a few inches, you can take off the entire backing And skip to Step 6

Step 4:



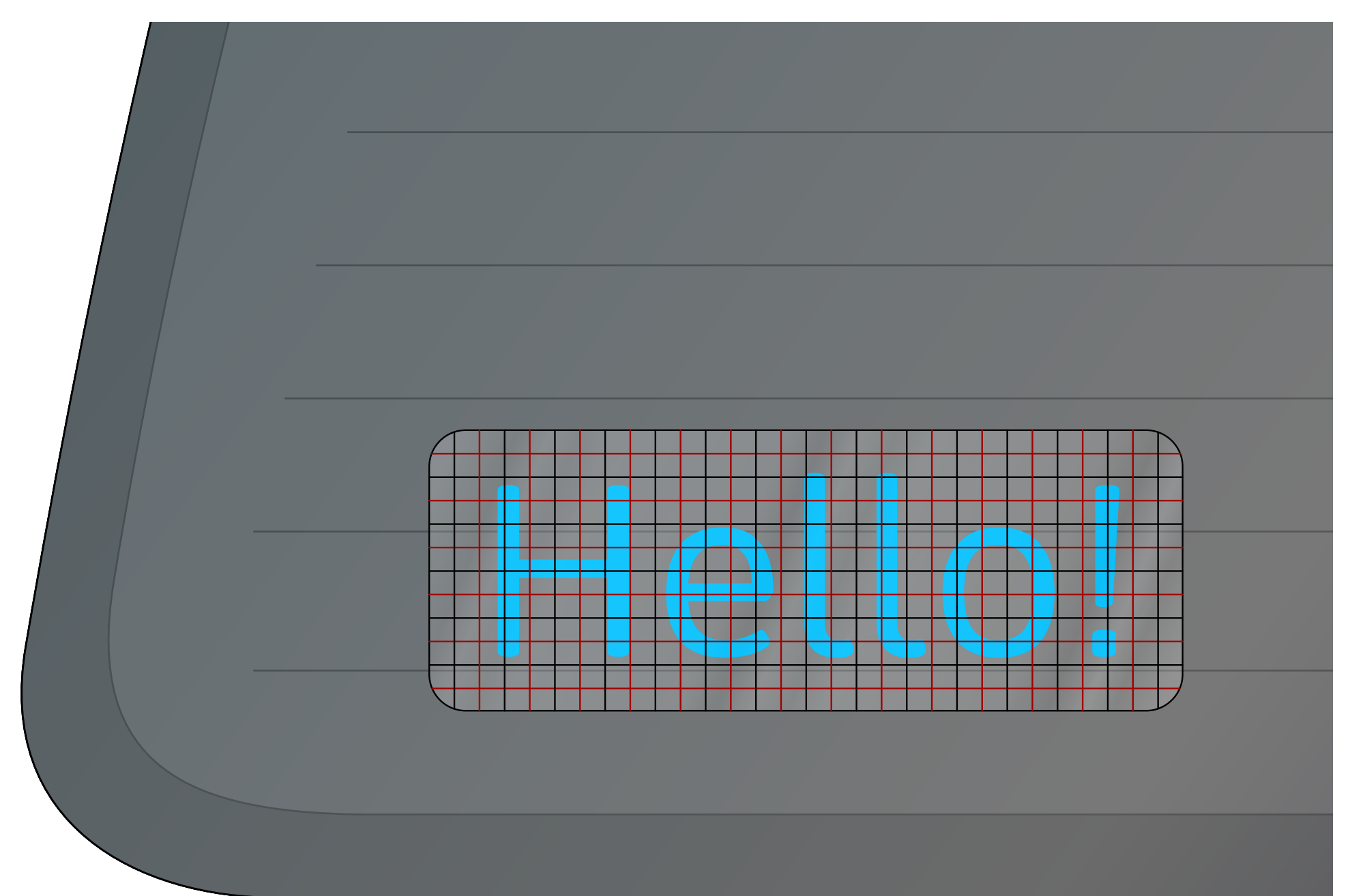
Carefully push down the adhesive side of the gridded transparency on the end you began to peel. Here you want to fold the backing paper **behind** the Decal. Proceed to Step 5.

Step 5:



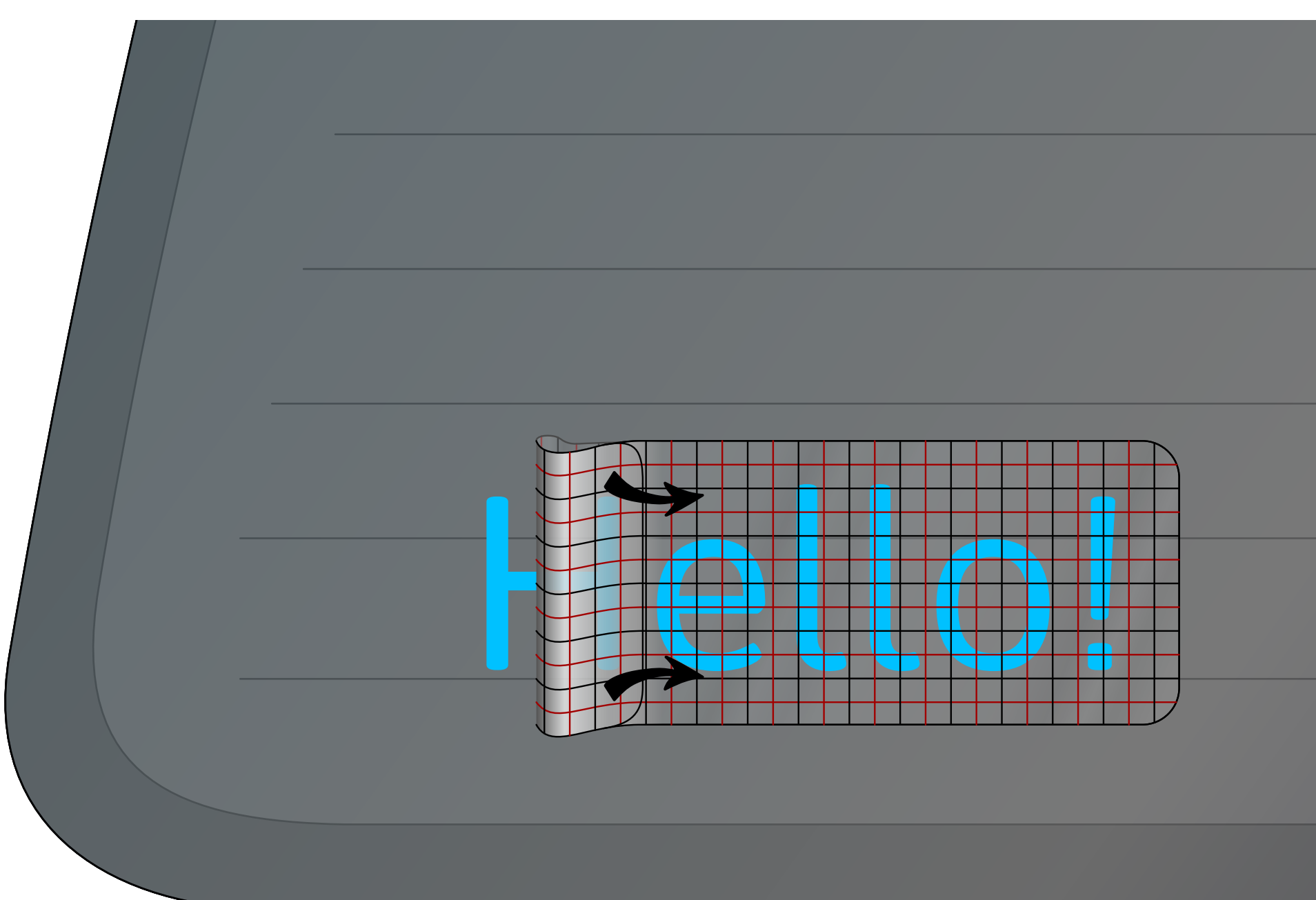
Apply smooth medium pressure with your squeegee (*Or squeegee substitute) to the gridded transparency while gently pulling the backing paper **behind** the Vinyl Decal. Continue to push the squeegee along the surface as you pull the backing paper until you have completely removed the backing paper.

Step 6:



Use your squeegee (*Or squeegee substitute) and with smooth firm pressure, burnish (rub down) the entire decal to insure good adhesion to the surface.

Step 7:



Slowly and carefully begin to peel back the gridded transparency, while holding it with pressure against the surface. *Note: If a part of text or image from the decal begins to lift *off* the surface you are adhering it too, back up your peeling a little bit and burnish that part down again with good pressure, and try to peel again.

Congratulations!

You have successfully adhered your new Vinyl Decal!

Thank you!

Please Message us if you have any question!

