



www.irmmoto.com

sales.irmfg@gmail.com

## IRM Moto Gemini 1250 GSA Pegs

Fits BMW R1250GSA, BMW R1250GS with OEM Crash Bars

### Parts List



- (x1) Left assembly
- (x1) Right assembly
- (x6) Coupler nuts 8mm x 24mm
- (x4) M8-1.25 x 20mm bolts
- (x4) 8mm lock washers
- (x2) M8-1.25 x 16mm countersunk bolt

### Tool List

- 3/16" Allen
- 5/16" Allen
- 5mm Allen
- 6mm Allen
- T40 Torx
- T50 Torx
- 11mm socket
- 13mm socket
- Ratchet
- Extensions
- Pick
- Threadlocker

Installation Instructions

1. Remove the lower crash bar

- a. Remove the driving light wire from the (x2) clips in front, using a pic to open the wire clips



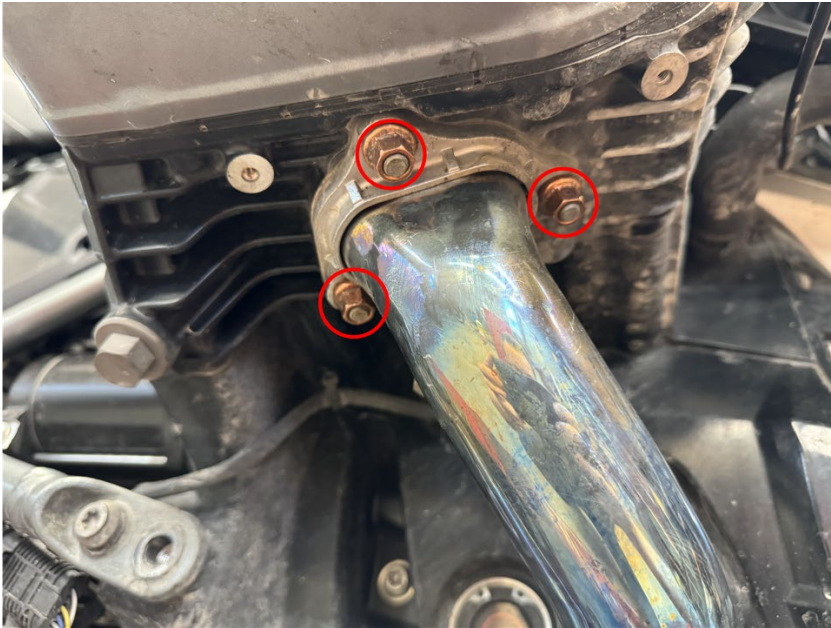
- b. Remove the (x4) bolts holding on the lower crash bar

- (x2) are T40 Torx
- (x2) are T50 Torx

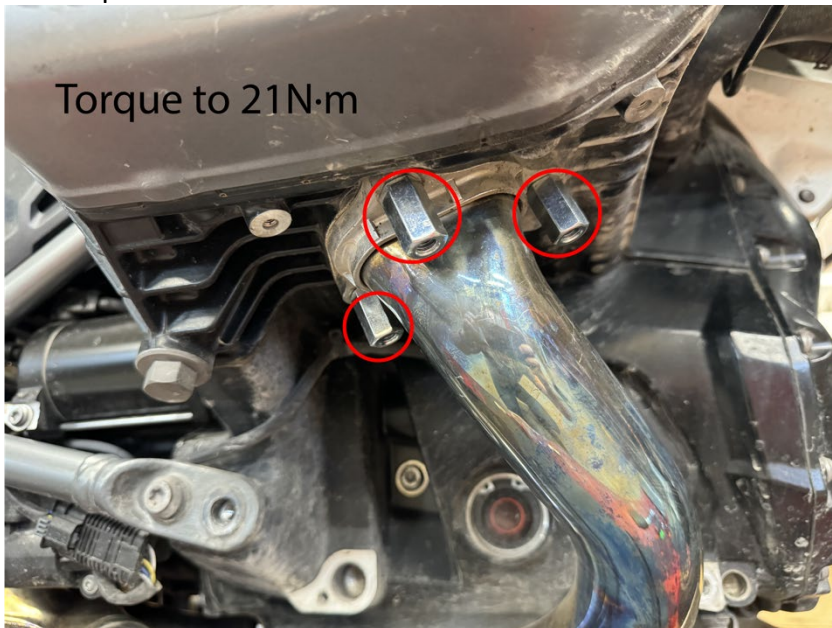


## IRM Moto Gemini 1250 GSA Installation Instructions

2. Remove the (x3) exhaust nuts using an 11mm socket



3. Install the (x3) coupler nuts using a 13mm socket
  - a. Torque to 21 N•M



## IRM Moto Gemini 1250 GSA Installation Instructions

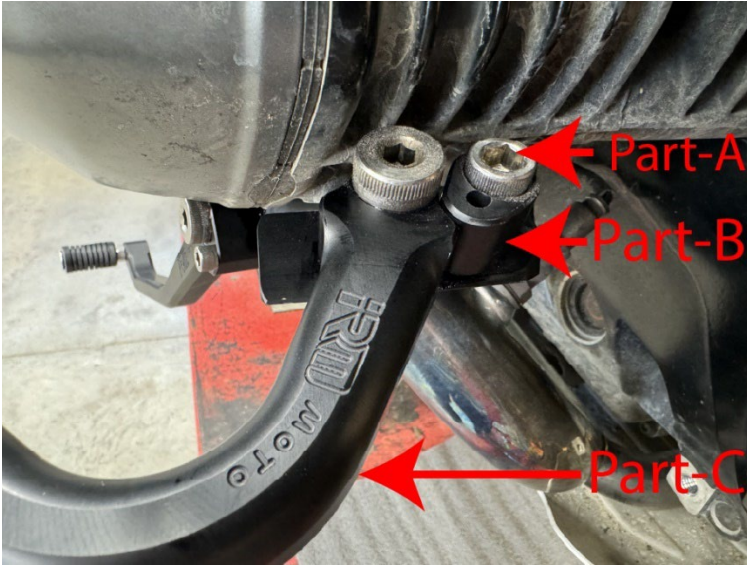
4. Install the peg assembly
  - a. Place the peg assembly into position
    - The recessed holes in the peg assembly go over the coupler nuts
  - b. The (x1) 8mm countersunk bolt goes in the mount hole with the recession using a 5mm Allen
    - No lock washer on this countersunk bolt
    - Use blue threadlocker
  - c. The (x2) 8mm socket head bolts go in the remaining two holes using a 6mm Allen
    - Use the 8mm lock washers
    - Use blue threadlocker



## IRM Moto Gemini 1250 GSA Installation Instructions

5. Next, sit on the bike and assess whether the current positions of the footrests suit your riding posture and preferences.
  - If you want to adjust the upper footrest, go to Step 6
  - If you want to adjust the lower footrest, go to Step 7
  - If you do not want to adjust the footrests, go to Step 8

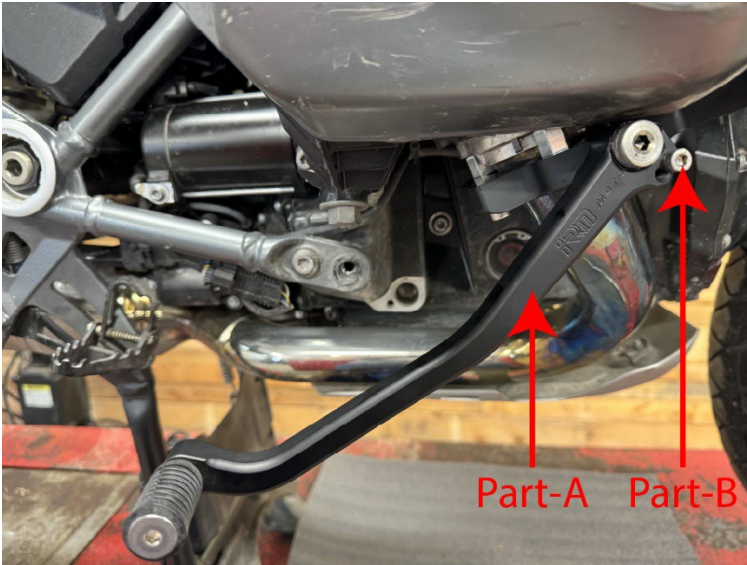
6. Adjust the upper footrest



ID	Description
Part-A	Upper stop bolt
Part-B	Upper stop
Part-C	Upper footrest

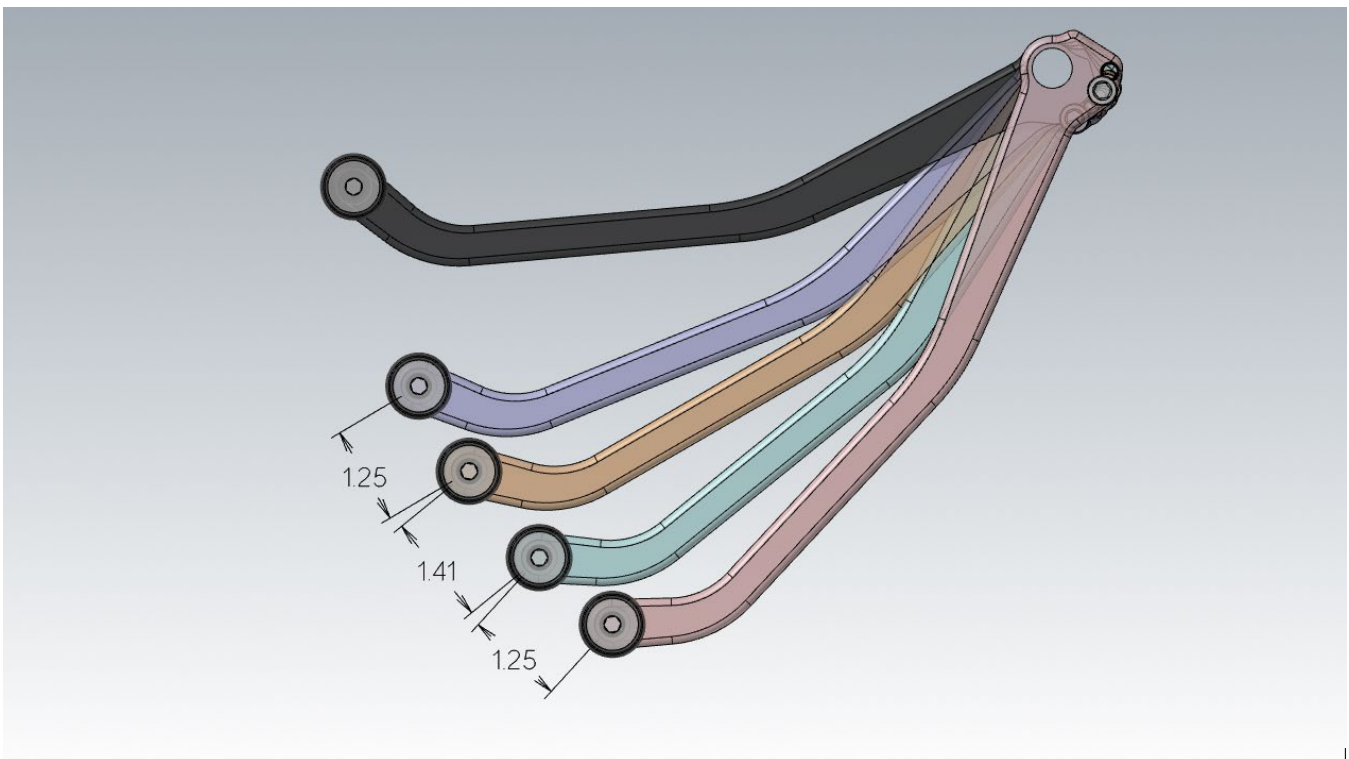
- a. Loosen the upper stop bolt (Part-A)
- b. Rotate the upper footrest (Part-C) to the desired position
- c. While holding the upper footrest (Part-C) in the desired position, rotate the upper stop (Part-B) into the footrest (Part-C)
- d. Tighten the upper stop bolt (Part-A)

7. Adjust the lower footrest



ID	Description
Part-A	Lower footrest
Part-B	Lower stop bolt

- a. Remove the lower stop bolt (Part-B)
- b. Install the lower stop bolt (Part-B) in the desired position
  - Use threadlocker
  - Use the following images to determine the lower stop bolt position



Four Open Positions

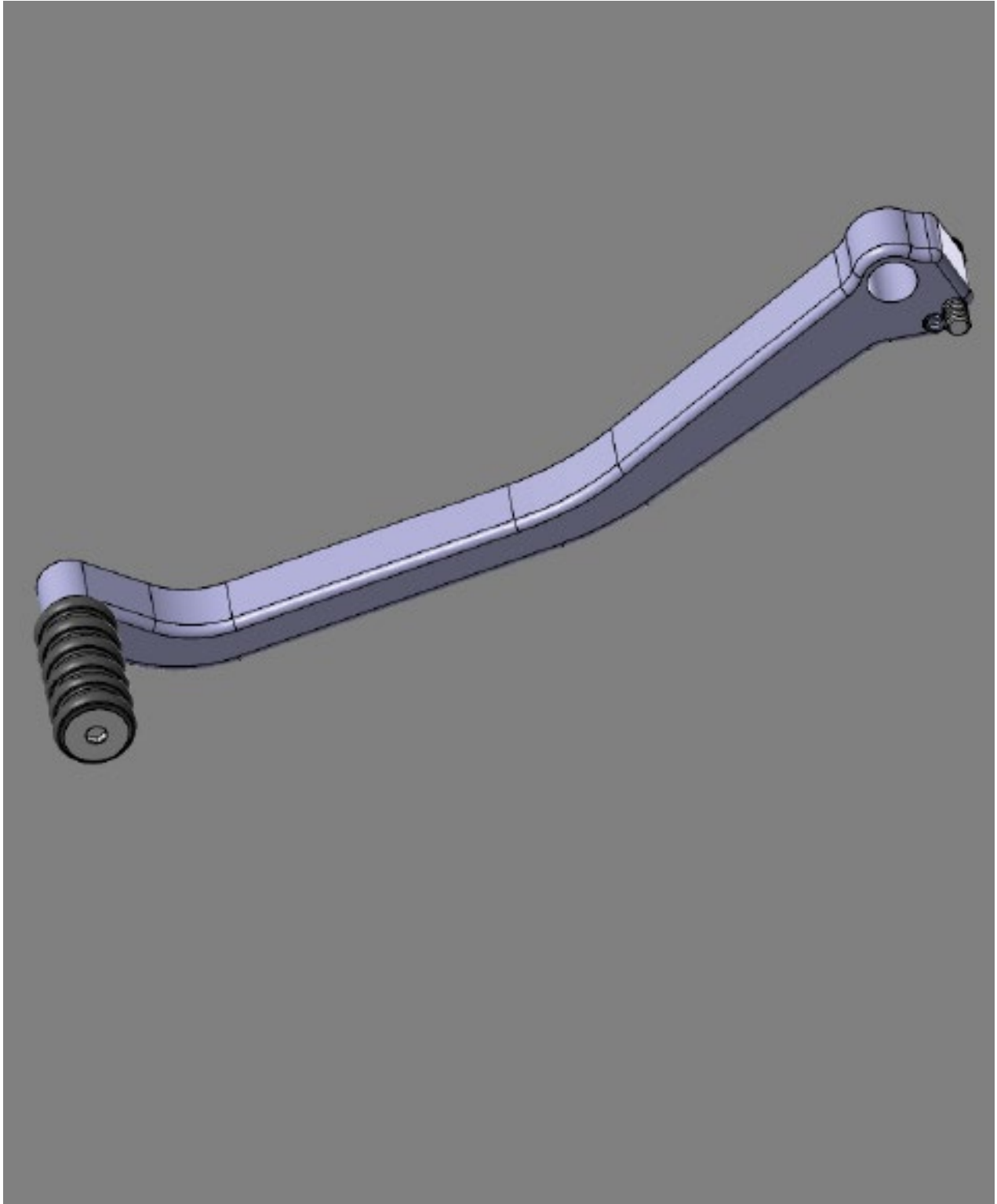
# IRM Moto Gemini 1250 GSA Installation Instructions

Position 1 - Closest Reach	Position 2 - Comfort Reach	Position 3 - Extended Reach	Position 4 - Max Reach
Insert bolt from the back into the upper hole	Insert bolt from the front into the upper hole	Insert bolt from the back into the lower hole	Insert bolt from the front into the lower hole.

**Gemini 1250 GSA Lower Peg Adjustment Positions**

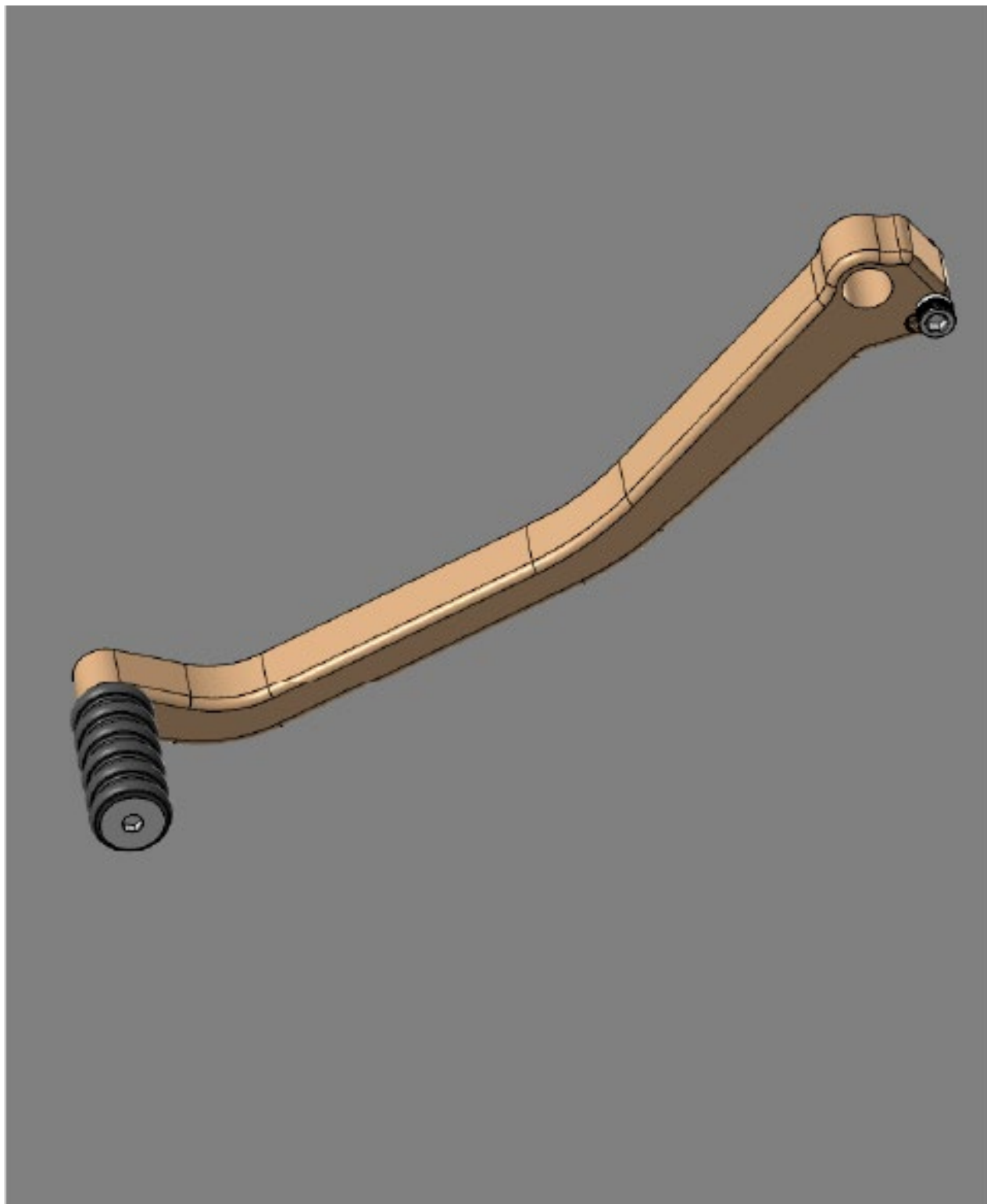
*Four Open Positions*

**Closest Reach**

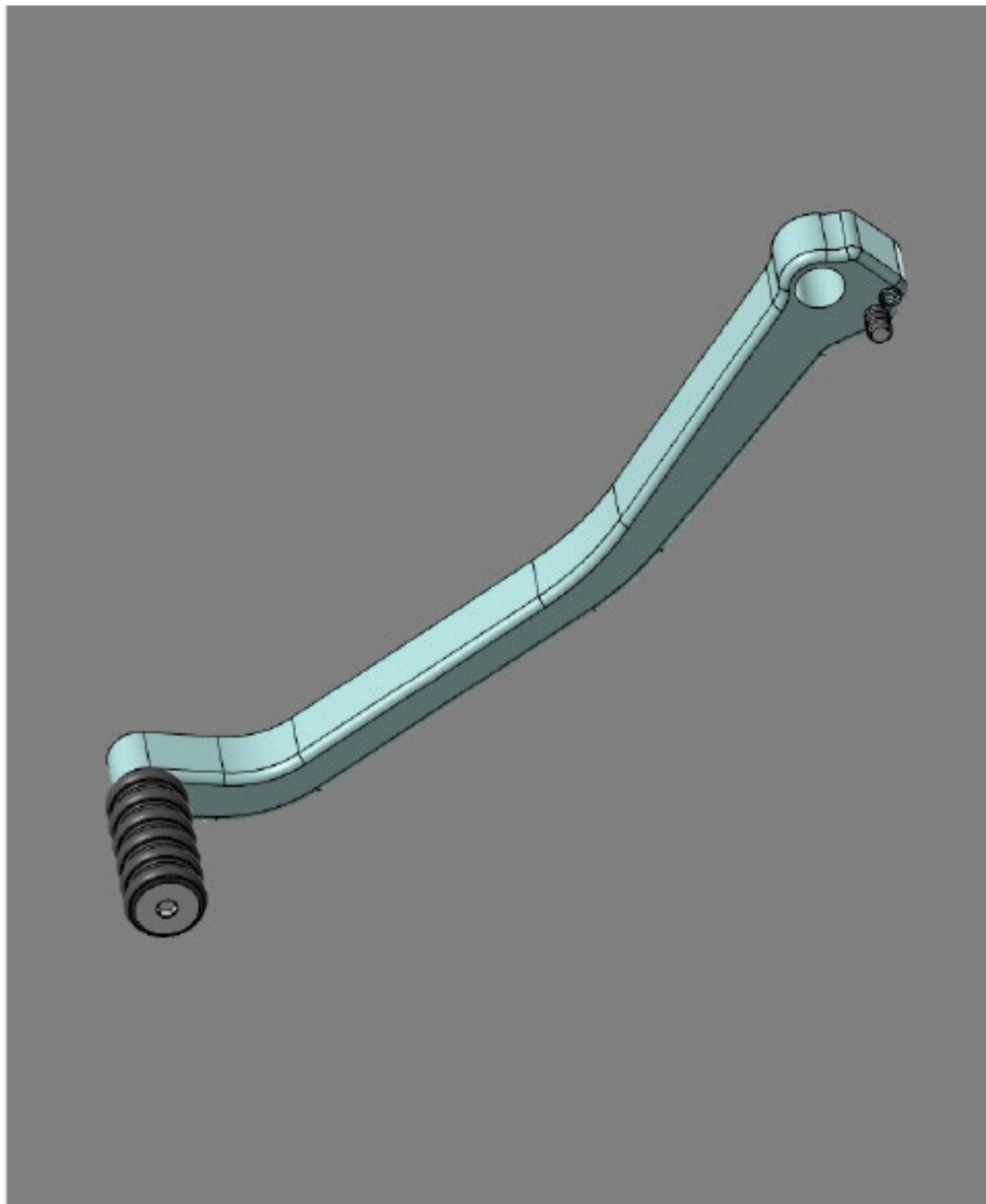




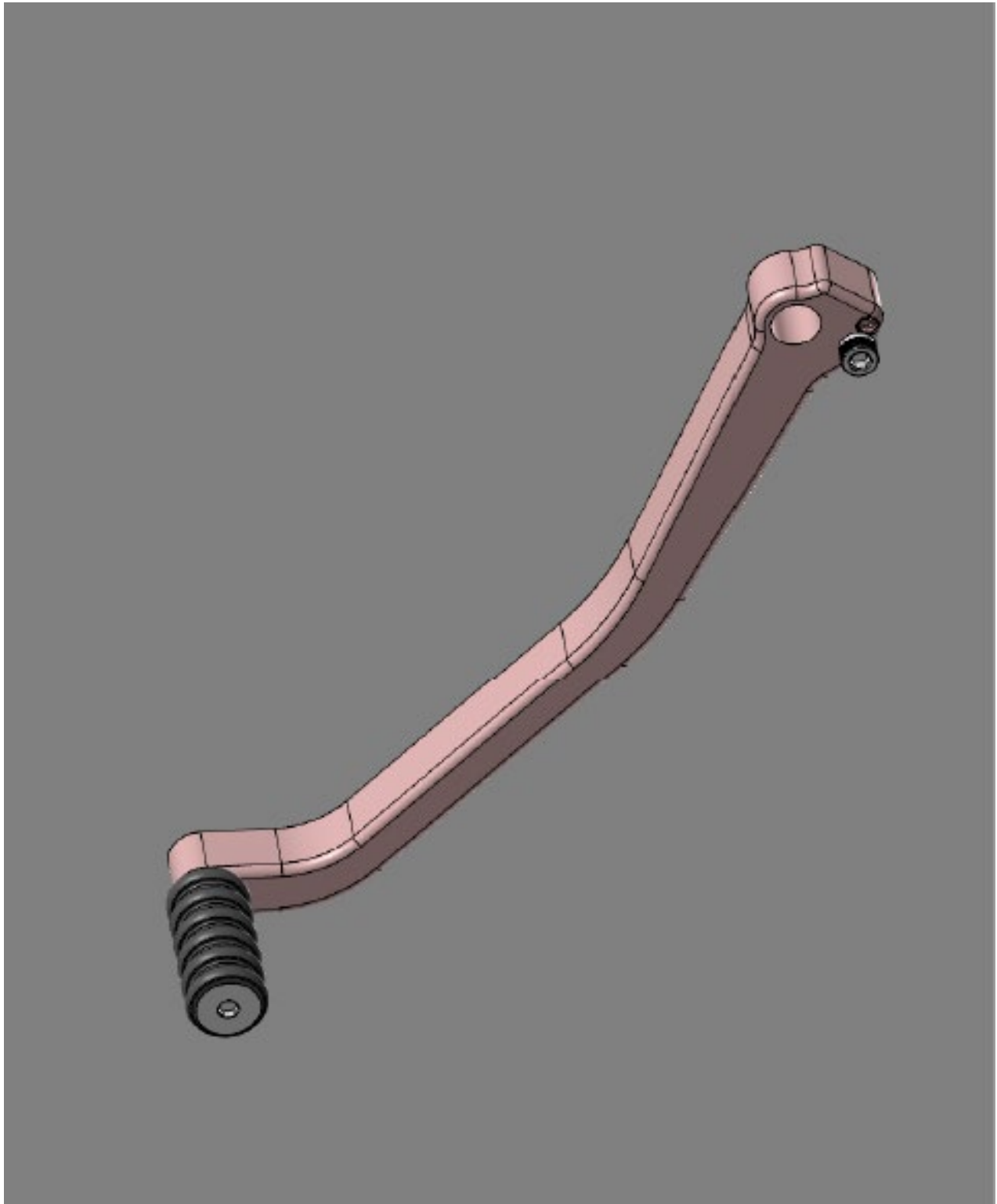
**Comfort Reach**



**Extended Reach**



**Max Reach**



## IRM Moto Gemini 1250 GSA Installation Instructions

8. Reinstall the lower crash bar
  - a. Feed the lower footrest through the lower crash bar opening



- b. Position the crash bar into position
  - c. Reinstall the (x4) bolts



## IRM Moto Gemini 1250 GSA Installation Instructions

- d. Reinstall the driving light wires into the (x2) wire clips

