



[www.irmmoto.com](http://www.irmmoto.com)

[sales.irmfg@gmail.com](mailto:sales.irmfg@gmail.com)

## IRM Moto Gemini 1250 GSA Pegs

Adjustment Instructions

### Parts List



- (x1) Left assembly
- (x1) Right assembly
- (x6) Coupler nuts 8mm x 24mm
- (x4) M8-1.25 x 20mm bolts
- (x4) 8mm lock washers
- (x2) M8-1.25 x 16mm countersunk bolt

### Tool List

- 3/16" Allen
- 5/16" Allen
- T40 Torx
- T50 Torx
- Ratchet
- Extensions
- Pick
- Threadlocker

Adjustment Instructions

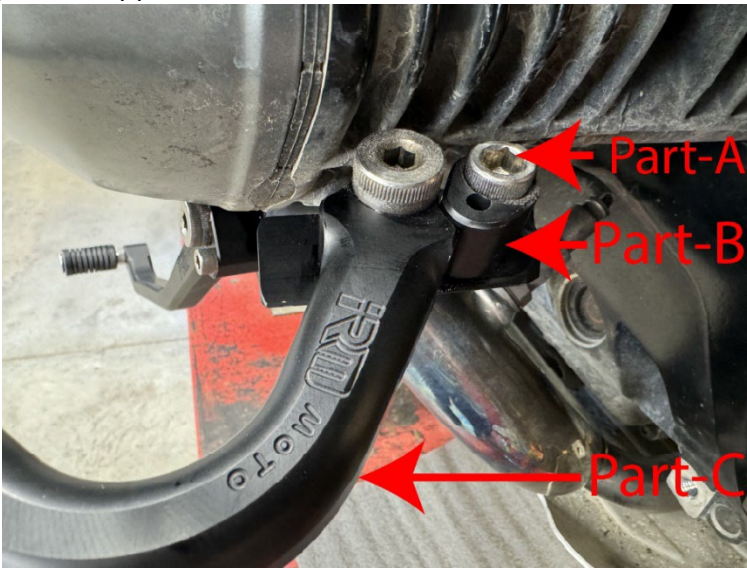
1. Remove the lower crash bar
  - a. Remove the driving light wire from the (x2) clips in front



- b. Remove the (x4) bolts holding on the lower crash bar
    - (x2) are T40 Torx
    - (x2) are T50 Torx



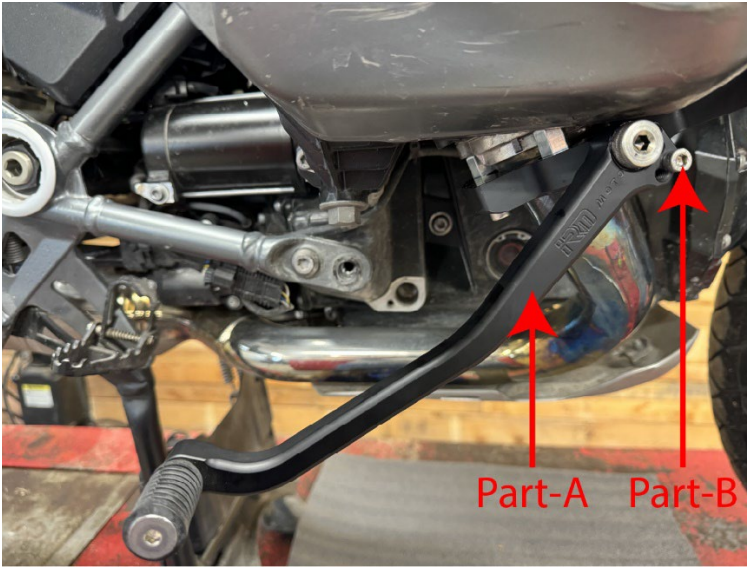
2. Adjust the upper footrest



ID	Description
Part-A	Upper stop bolt
Part-B	Upper stop
Part-C	Upper footrest

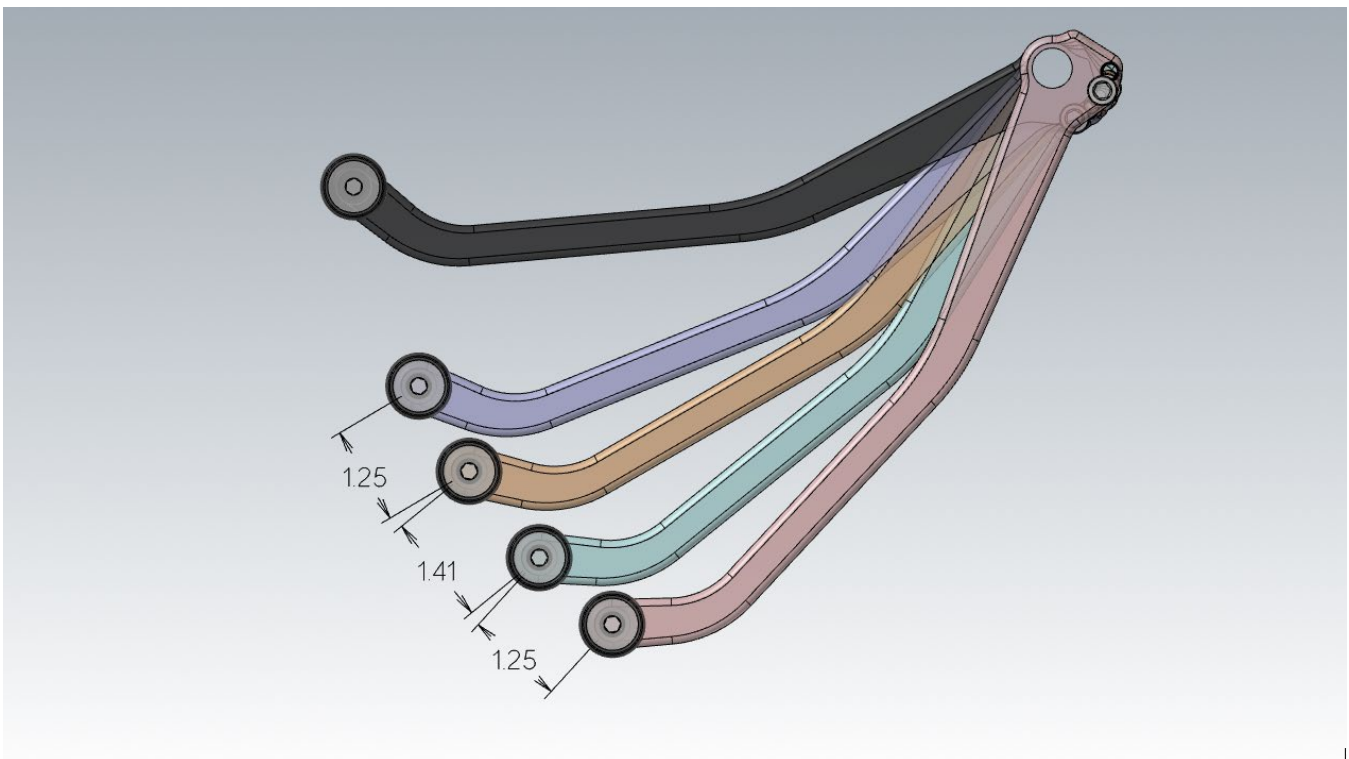
- a. Loosen the upper stop bolt (Part-A)
- b. Rotate the upper footrest (Part-C) to the desired position
- c. While holding the upper footrest (Part-C) in the desired position, rotate the upper stop (Part-B) into the footrest (Part-C)
- d. Tighten the upper stop bolt (Part-A)

3. Adjust the lower footrest



ID	Description
Part-A	Lower footrest
Part-B	Lower stop bolt

- a. Remove the lower stop bolt (Part-B)
- b. Install the lower stop bolt (Part-B) in the desired position
  - Use threadlocker
  - Use the following images to determine the lower stop bolt position



Four Open Positions

# IRM Moto Gemini 1250 GSA Adjustment Instructions

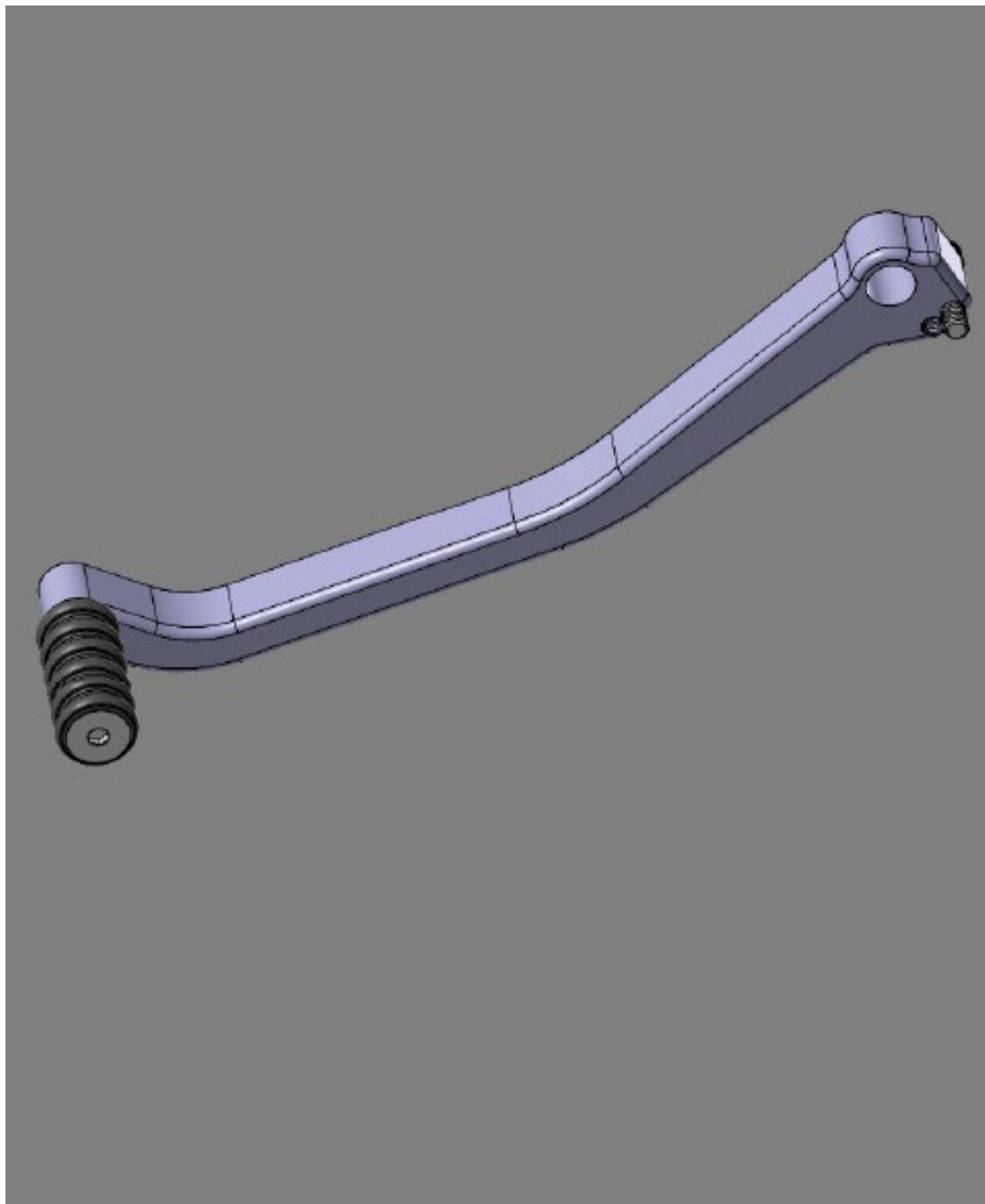
Position 1 - Closest Reach	Position 2 - Comfort Reach	Position 3 - Extended Reach	Position 4 - Max Reach
Insert bolt from the back into the upper hole	Insert bolt from the front into the upper hole	Insert bolt from the back into the lower hole	Insert bolt from the front into the lower hole.

**Gemini 1250 GSA Lower Peg Adjustment Positions**

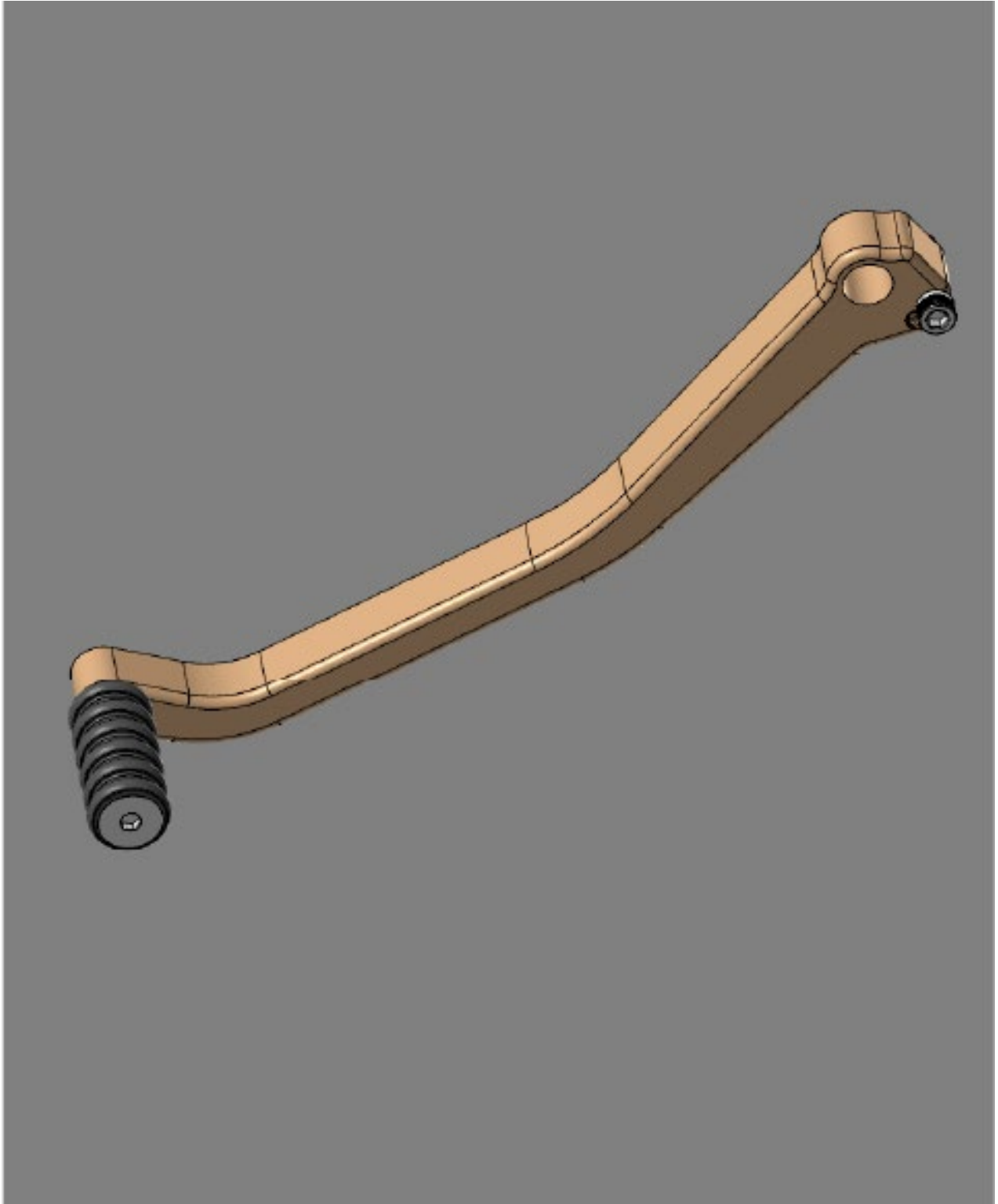
*Four Open Positions*



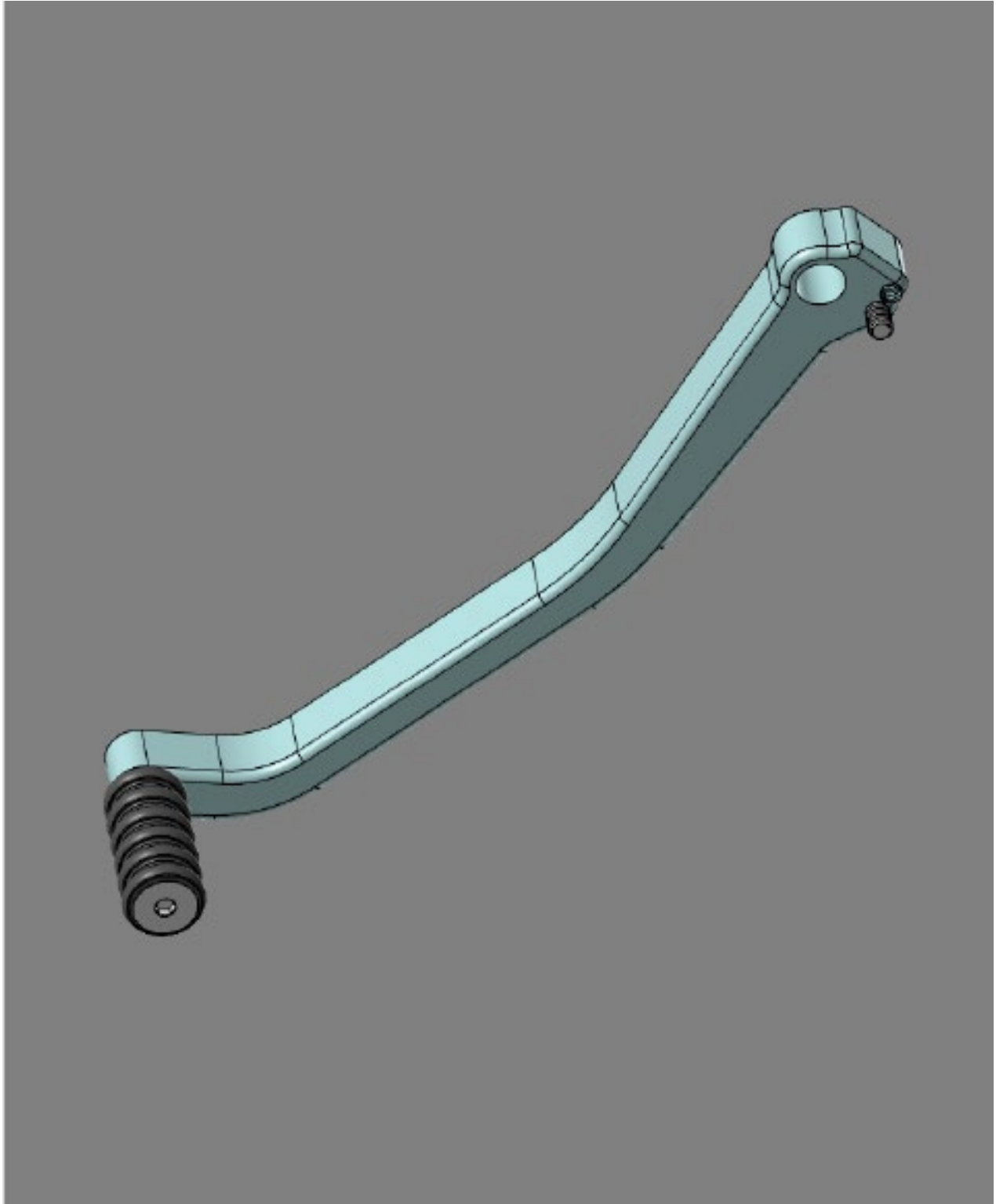
**Closest Reach**



**Comfort Reach**

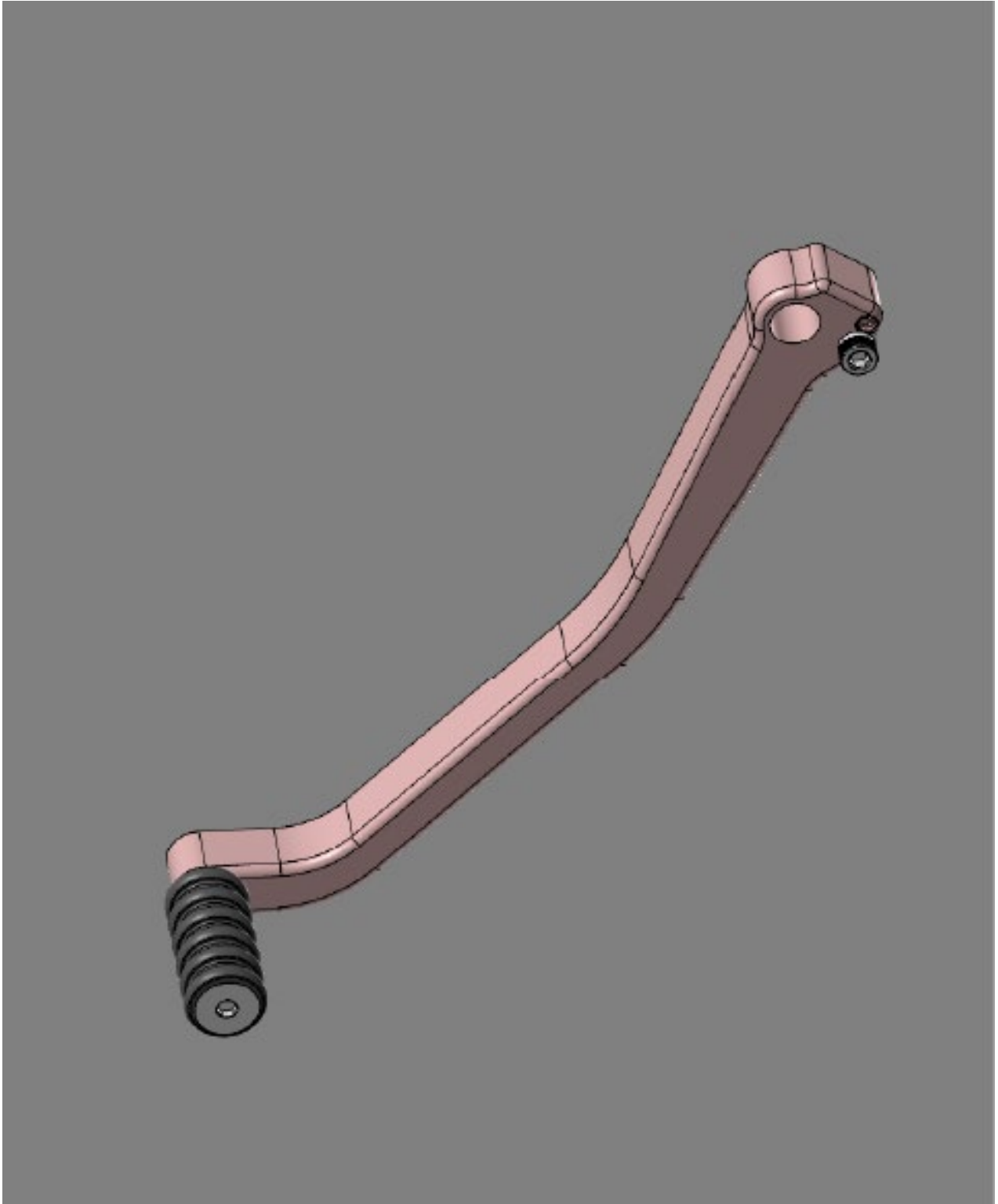


**Extended Reach**





**Max Reach**



## IRM Moto Gemini 1250 GSA Adjustment Instructions

4. Reinstall the lower crash bar
  - a. Feed the lower footrest through the lower crash bar opening



- b. Position the crash bar into position
  - c. Reinstall the (x4) bolts



## IRM Moto Gemini 1250 GSA Adjustment Instructions

- d. Reinstall the driving light wires into the (x2) wire clips

