

4" & 6" MINI PANEL GIMBAL - 5 CCT SELECTABLE LR23742, LR23746

SAFETY INFORMATION

IMPORTANT SAFETY INSTRUCTIONS. SAVE THESE INSTRUCTIONS.

Please read and understand these instructions before operating or installing the product. Failure to do so may lead to electric shock, fire or other injuries that could be hazardous or even fatal.

- SHUT OFF THE ELECTRICITY BEFORE INSTALLING

- **DO NOT OPEN**, no user serviceable parts inside. Any changes or modifications and applications not expressly approved by the manufacturer could void the user's authority to operate the equipment and warranty.

WARNING

- RISK OF FIRE OR ELECTRIC SHOCK

- LED retrofit kit installation requires knowledge of luminaire electrical systems. Do NOT attempt installation if not qualified and contact a qualified electrician.

- Install this kit only in the luminaires that have construction features and dimensions shown in the drawings.

- **DO NOT** exceed the input rating of the luminaire.

- **DO NOT** make or alter any open holes in an enclosure of wiring or electrical components during installation.

- To prevent wiring damage or abrasion, do NOT expose wiring to edges of sheet metal or other sharp objects.

- This device is not intended for use with emergency exits

- This luminaire has been modified to operate LED lamp. DO NOT attempt to install or operate incandescent lamps or CFL in this luminaire.

- Suitable for TYPE IC or TYPE NON IC luminaires.

- This retrofit kit is accepted as a component of a luminaire where the suitability of the combination shall be determined by authorities having jurisdiction.

CAUTION

- **CONNECT FIXTURE TO A 120V, 60Hz POWER SOURCE ONLY. ANY OTHER CONNECTION WILL VOID THE WARRANTY.**

This device complies with Part 15 of the FCC Rules. Operation is subject to the following two conditions: (1) this device may not cause harmful interference, and (2) this device must accept any interference received, including interference that may cause undesired operation. This equipment generates, uses and can radiate radio frequency energy and, if not installed and used in accordance with the instructions, may cause harmful interference to radio communications. However, there is no guarantee that the interference will not occur in a particular installation. If this equipment does cause harmful interference to radio or television reception, which can be determined by turning the equipment off and on, the user is encouraged to try and correct the interference by one or more of the following measures:

- Reorient or relocate the receiving antenna.
- Increase the separation between the equipment and receiver.
- Connect the equipment into an outlet on a circuit different from that to which the receiver is connected.
- Consult the dealer or an experienced radio/TV technician for help.

TROUBLE SHOOTING

FIXTURE DOES NOT LIGHT

Possible Solution and corrective action:

1. Power is off - check fuse, circuit breaker and switch
2. Incorrect wire connection, check wiring.

CIRCUIT BREAKER TRIPS WHEN TURNED ON

Possible Solution and corrective action:

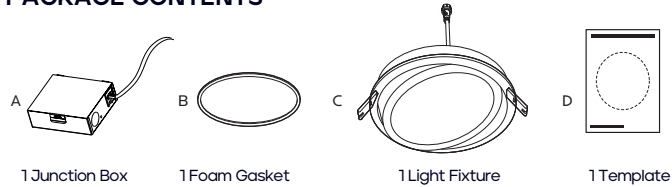
1. Incorrect wire connection, check wiring.

FLICKERING WHEN TURNED ON

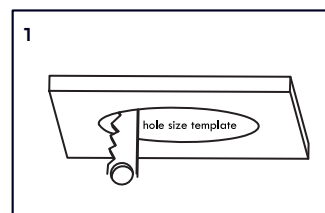
Possible Solution and corrective action:

1. Dimmer not compatible - Refer to compatibility list.
2. Loose wiring - check wiring
3. Faulty switch - check switch.

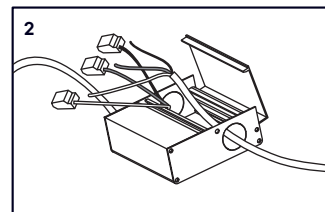
PACKAGE CONTENTS



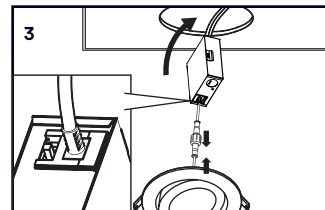
TOOLS REQUIRED: Ladder, Safety Goggles, Gloves, Drywall Saw, Wire Strippers, Pencil, Cable Clamp, Connection Terminal



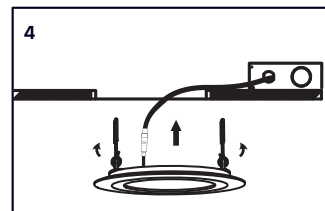
1. Use the template to mark the desired installation location and use a drywall saw to cut the opening marked by the template.



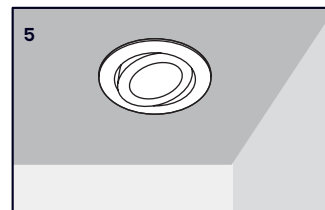
2. Remove the knockouts for wiring and open the junction box. Junction box contains three wires: hot (black), neutral (white) and bare ground. Use quick wire connectors to connect the two hot wires together. Repeat the step with the two neutral wires. Close the junction box to complete the wiring.



3. Connect downlight to junction box. Select your desired color temperature by using the % CCT switch on the junction box. Place junction box into the ceiling.



4. Push the easy mount clips up and insert the downlight into the ceiling, release clips to mount the downlight on the ceiling.



5. Secure the downlight, aim the downlight to the object or area that you want to highlight.

Installation is complete.