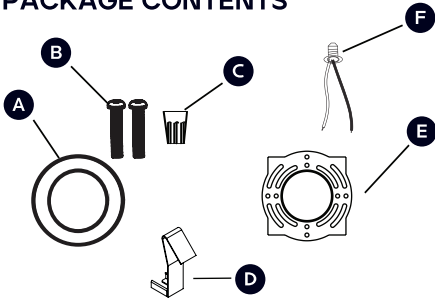


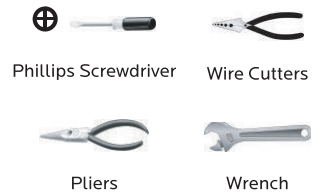
5" SURFACE MOUNT SLIM ROUND - 5CCT SELECTABLE LR23550

PACKAGE CONTENTS



PART	ITEM NAME	QTY.	NOTE
A	LED Low Profile Flushmount	1	
B	Mounting Screws	2	
C	Wire Nut	3	
D	Clip	3	Optional
E	Mounting Plate	1	
F	E26 Lamp Holder	1	Optional

TOOLS AND MATERIALS REQUIRED



SAFETY PRECAUTIONS

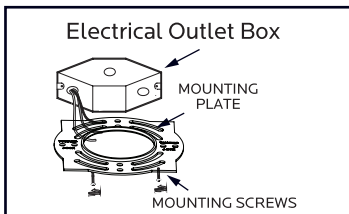
For safety, read and understand instructions completely before starting installation. Electricity should be turned off at the fuse or the circuit breaker box before installing the fixture. All electrical connections must be in accordance with N.E.C or your local code.

ASSEMBLY INSTRUCTIONS

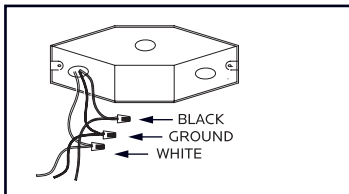
1. Preparing for installation. Disconnect electrical power before installing or servicing any part of this fixture.
2. This product SHALL be surface mounted with junction box or non-combustible surface above 4 feet (1.2 meter) high. User should prepare necessary accessories and spare parts (not provided) including junction box and screws.



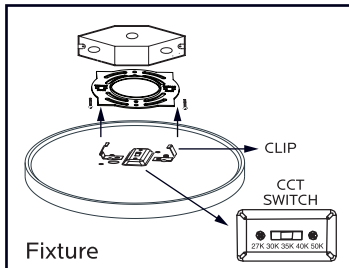
OPTION #1: FLUSH MOUNT



1. Prior to installation, install mounting plate into the electrical outlet box with mounting screws. Drive screws completely to the end of the junction box.

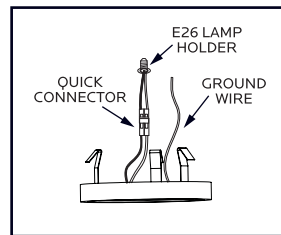


2. Connect supply wires to wires on fixture with wire nuts or push wires into Quick Connector. Connect white to white, black to black, and copper wire to copper wire as grounding connection.

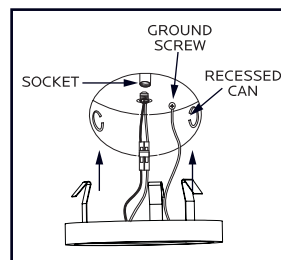


3. Completing the installation by pushing the fixture into the mounting plate.

OPTION #2: RETROFIT A RECESSED CAN

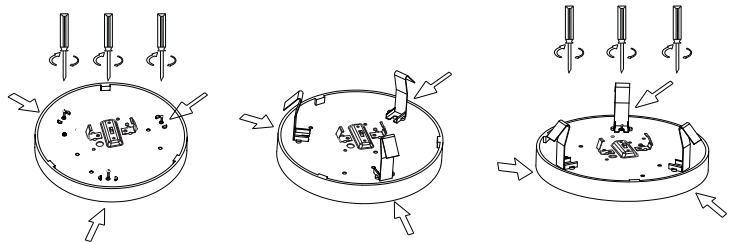


1. Insert wires into Quick Connector. Black to black and white to white.
2. Attach ground wire to ground screw in recessed can.
3. Turn E26 lamp holder into socket base.



4. Connect Quick Connectors
5. Tuck all wires into recessed can.
6. Squeeze springs and push up into recessed can.

4 inch Housing Position



MADE IN CHINA

CAUTION: RISK OF ELECTRIC SHOCK
DISCONNECT POWER BEFORE CONNECTING THE FIXTURE.
FAIL TO DO SO MAY PERMANENTLY DAMAGE THE LEDS.

WARNING:
DO NOT REMOVE OR ATTEMPT TO REMOVE LEDS.