

## T8/U6 - 3 CCT SELECTABLE LR23517

PLEASE REVIEW THESE INSTRUCTIONS AND WARNINGS FOR PROPER INSTALLATION

THIS PRODUCT MUST BE INSTALLED IN ACCORDANCE WITH THE APPLICABLE INSTALLATION CODE BY A PERSON FAMILIAR WITH THE CONSTRUCTION AND OPERATION OF THE PRODUCT AND THE HAZARDS INVOLVED.

THIS TUBE IS INTENDED TO REPLACE FLUORESCENT TUBE LAMPS WITH ANSI DESIGNATION 32W23T8U6

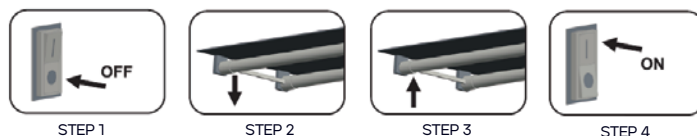
### WARNING

- WARNING: Risk of fire or electric shock. The electrical rating of these products is 120-277V AC, the installer must determine whether they have 120-277V AC at the luminaire before installation.
- WARNING: Risk of fire or electric shock. LED Retrofit Kit installation requires knowledge of luminaires electrical systems. If not qualified, do not attempt installation. Contact a qualified electrician.
- WARNING: Risk of fire or electric shock. Install this kit only in the luminaires that have the construction features and dimensions shown in the photographs and/or drawings and where the input rating of the retrofit kit does not exceed the input rating of the luminaire.
- WARNING: To prevent wiring damage or abrasion, do not expose wiring to edges of sheet metal or other sharp objects.
- DO NOT make or alter any open holes in an enclosure of wiring or electrical components during kit installation.
- DO NOT use with dimmers. Suitable for damp locations

### CAUTION

- THIS DEVICE IS NOT INTENDED FOR USE WITH EMERGENCY EXITS OR EMERGENCY LIGHTING
- Installers should not disconnect existing wires from lampholder terminals to make new connections at lampholder terminals. Instead installers should cut existing lampholder leads away from the lampholder and make new electrical connections to lampholder lead wires by employing applicable connectors.
- WARNING: To avoid potential fire or shock hazard, do not use this retrofit kit in luminaires employing shunted bi-pin lampholders. NOTE: Shunted lampholders are found only in fluorescent luminaires with Instant-Start ballasts. Instant-start ballasts can be identified by the words "Instant Start" or "IS" marked on the ballast. This designation may be in the form of a statement pertaining to the ballast itself, or may be combined with the marking for the lamps with which the ballast is intended to be used, for example: F40T12/IS. For more information, contact the LED luminaire retrofit kit manufacturer.

### DIRECT REPLACEMENT ELECTRONIC BALLAST: INSTRUCTIONS (TYPE A)



- STEP 1: SWITCH-OFF POWER TO THE LUMINAIRE  
 STEP 2: REMOVE FIXTURE DIFFUSER (IF PRESENT)  
 STEP 3: REMOVE THE EXISTING FLUORESCENT LAMPS FROM YOUR FIXTURE  
 STEP 4: INSTALL THE LED T8 U-BEND REPLACEMENT LAMP  
 STEP 5: ATTACH THE DIFFUSER AND TURN ON THE POWER SWITCH TO THE FIXTURE

### RETROFIT BALLAST BYPASS INSTALLATION INSTRUCTIONS (TYPE B)

THE RETROFIT KIT IS ACCEPTED AS A COMPONENT OF A LUMINAIRE WHERE THE SUITABILITY OF THE COMBINATION SHALL BE DETERMINED BY AUTHORITIES HAVING JURISDICTION. PRODUCT MUST BE INSTALLED BY A QUALIFIED ELECTRICIAN IN ACCORDANCE WITH THE APPLICABLE AND APPROPRIATE ELECTRICAL CODES. THE INSTALLATION GUIDE DOES NOT SUPERSEDE LOCAL OR NATIONAL REGULATIONS FOR ELECTRICAL INSTALLATIONS.

#### BYPASSING MAGNETIC/ELECTRONIC BALLAST

STEP 1: TURN OFF POWER BEFORE INSTALLATION

STEP 2:

- REMOVE THE EXISTING BALLAST AND EXISTING STARTER (IF PRESENT) FROM THE FIXTURE. (FIG. 1)
- THE WIRING CAN BE SINGLE END OR DOUBLE END. THE CONNECTION METHOD REFERS TO STEP 3 (FIG. 2)

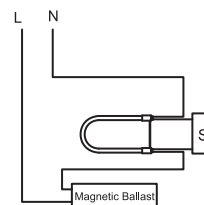


FIG. 1

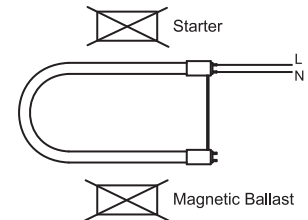
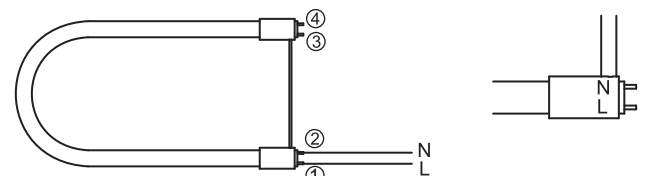


FIG. 2

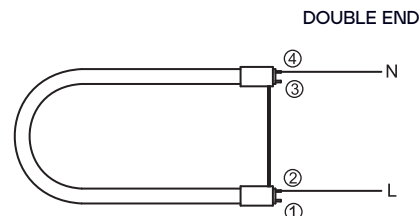
STEP 3: REWIRE THE FIXTURE TO BE ONCE CERTAIN SINGLE END/DOUBLE END POWER (FIG. 3 & FIG. 4)

FIG. 3



One single-ended: leads 1 connected to L; leads 2 connected to N  
 Leads 1 and 2 at the end of the lampholder with LN

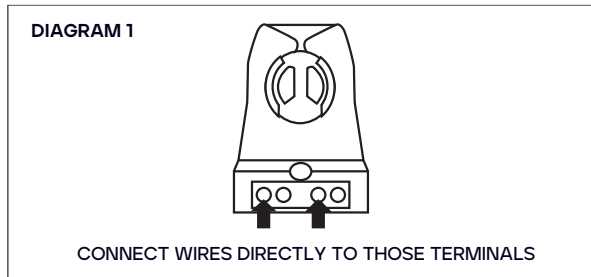
FIG. 4



DOUBLE-ENDED: LEADS 1 OR 2 CONNECTED TO L; LEADS 3 OR 4 CONNECTED TO N

**CAUTION: USE ONLY NON-SHUNTED LAMPHOLDERS FOR SINGLE-ENDED WIRING INSTALLATIONS.** Do not perform Single-Ended wiring installation of product in a fixture with shunted lampholders (found in all fixtures using instant start ballasts). If the existing lampholders are shunted, and Single-Ended wiring is desired, remove and replace them with non-shunted lampholders (or remove the external shunt if applicable). Make new connections directly to lampholder terminals as shown below in **DIAGRAM 1**.

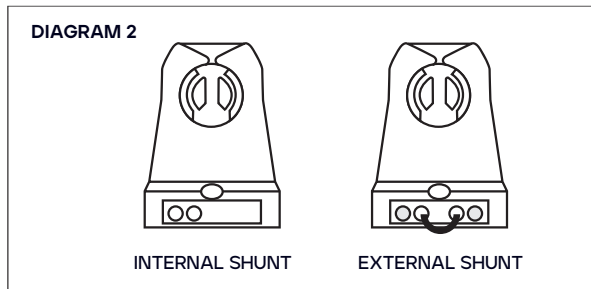
### TYPICAL NON-SHUNTED LAMPHOLDER



CONNECT WIRES DIRECTLY TO THOSE TERMINALS

IF IT IS NON SHUNTED SOCKET, IT CAN WORK IN BOTH SINGLE END AND DOUBLE END

### TYPICAL SHUNTED LAMPHOLDERS



IF IT IS SHUNTED SOCKET, IT IS DOUBLE END ONLY

AFTER WIRING MODIFICATION IS COMPLETED, ATTACH THE REPLACEMENT CAUTIONARY LABEL ONTO A VISIBLE PLACE ON THE FIXTURE THAT IS KEPT VISIBLE AFTER INSTALLATION OF LED U-BEND

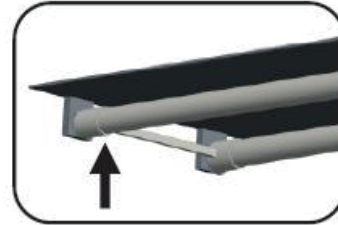
**⚠ WARNING!**

USE LED LAMPS ONLY. THIS LUMINAIRE HAS BEEN MODIFIED TO USE LED LAMPS AND CAN NO LONGER OPERATE THE ORIGINALLY INTENDED LED U-bend SAFELY.

LED U-bend COULD BREAK AND CAUSE PERSONAL INJURY IF USED IN THIS FIXTURE.

REMOVE ANY PRE-EXISTING LABELS AND REPLACE THEM WITH THE LABELS PROVIDED WITH THIS PRODUCT

STEP 4: INSTALL THE LED U-BEND LR23517



LED U-BEND LR23517

STEP 5: TURN ON THE POWER AND ENJOY YOUR NEW FIXTURE

PLEASE NOTE:

THIS PRODUCT MAY NOT BE COMPATIBLE WITH ALL BALLASTS, FOR MORE INFORMATION ABOUT BALLAST COMPATIBILITY PLEASE REFER TO [WWW.LUXRITE.COM](http://WWW.LUXRITE.COM)

### CCT SELECTABLE SWITCH

SELECT THE COLOR TEMPERATURE THROUGH THE CCT SWITCH ON THE LED LAMP'S BASE.

· USING THE COLOR (CCT) SELECTOR SWITCH ON THE BASE, SELECT THE DESIRED COLOR TEMPERATURE:]

- 3000K - SOFT WHITE
- 4100K - COOL WHITE
- 5000K - DAYLIGHT

TO PREVENT DAMAGE TO LAMP, LAMP MUST NOT BE POWERED ON WHEN COLOR (CCT) SELECTOR SWITCH IS CHANGED.

