

# AKLOW

BY LUXRITE®

## MODULE & TRIMS

HIGH  
CRI

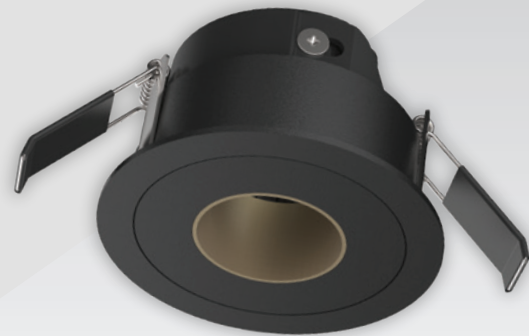
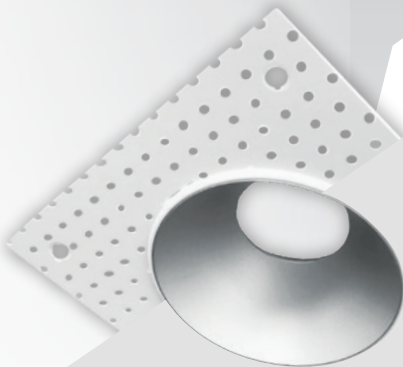
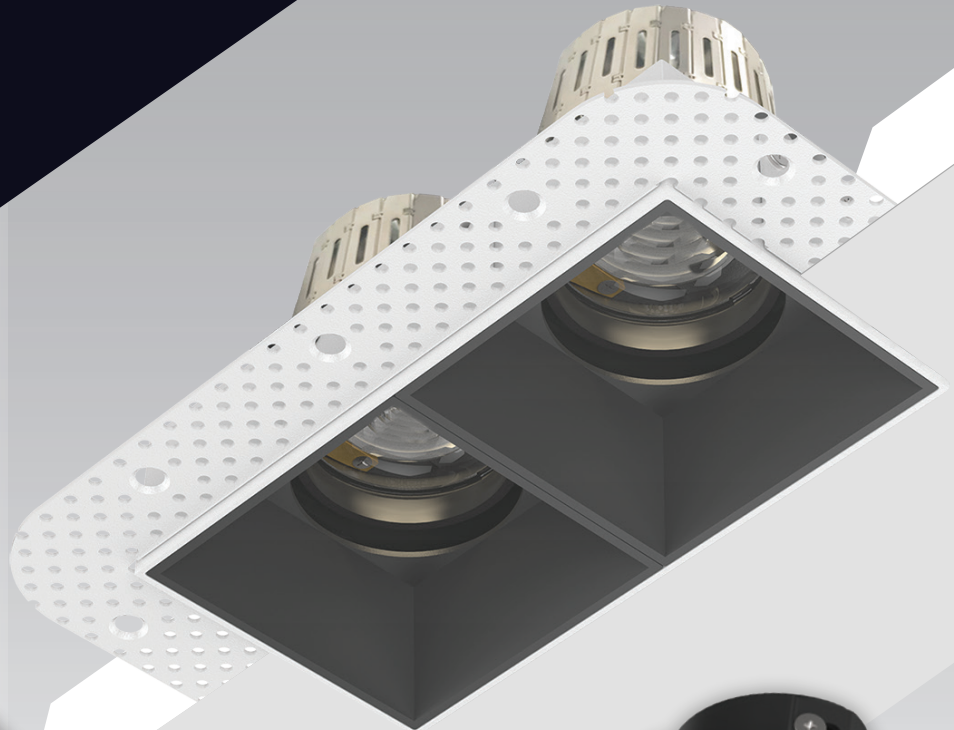
DIMMABLE

ANTI  
GLARE

7W  
650LM  
700LM  
750LM

9W  
800LM  
850LM  
900LM

13W  
1200LM  
1300LM  
1400LM





**ORDERING CODE**

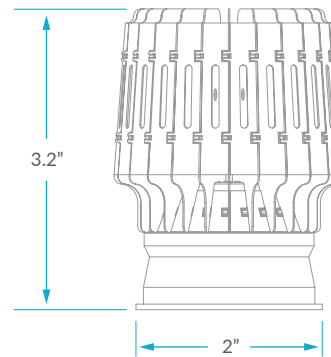
(EXAMPLE: LED7DLMD/927/36D/RARB/WRDR)

WATTAGE	COLOR	FLOOD	OPTIONAL EXTENDER
1	2	3	4
LED7DLMD = 7W	927 = 2700K	22D = 22°	RARW = White Trim Extender
LED9DLMD = 9W	930 = 3000K	36D = 36°	RARB = Black Trim Extender
LED13DLMD = 13W	935 = 3500K	60D = 60°	
	940 = 4000K	F36D = Frosted 36	
		F60D = Frosted 60	

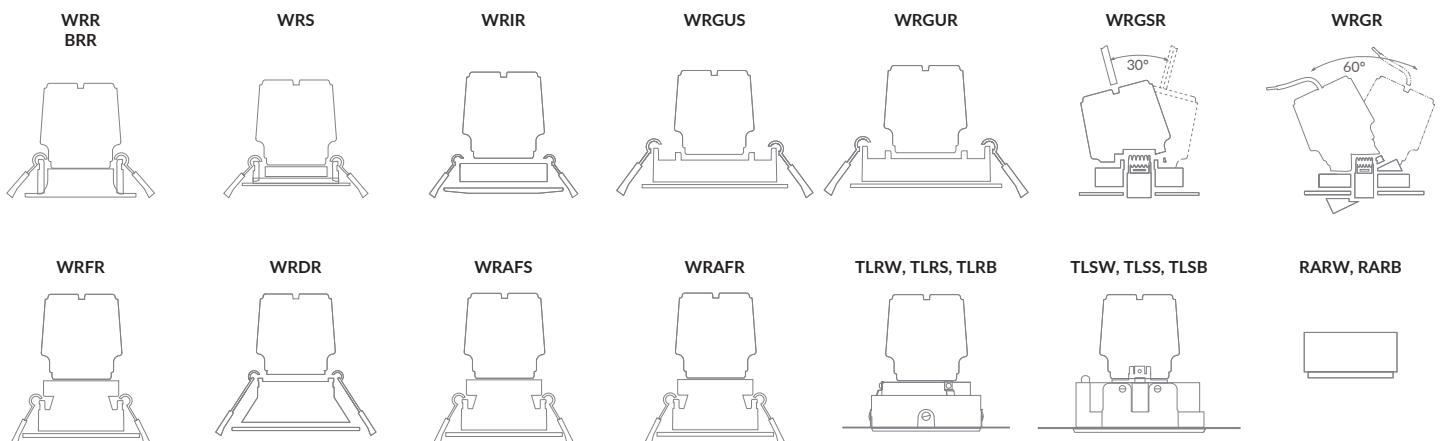
  

TRIM	NEW CONSTRUCTION PLATE
5	6
WRR = Recessed Round	LR41002 = MP-UNV-3/4/6
WRS = Recessed Square	LR41004 = MP-UNV-2/2.75/3.75/5
WRIR = Recessed IP44 Round	LR41005 = MPS-UNV-2.5/4/6
WRGUS = Recessed Gimbal Universal Square	LR41007 = MPS-UNV-7.5/10
WRGUR = Recessed Gimbal Universal Round	
WRGSR = Recessed Gimbal Small Round	
WRGR = Recessed Gimbal Round	
WRFR = Recessed Reflector Round	
WRDR = Recessed Deep Round	
WRAFS = Recessed Adjustable Reflector Square	
WRAFR = Recessed Adjustable Reflector Round	
TLRW = Recessed Round Trimless White	
TLRS = Recessed Round Trimless Silver	
TLRB = Recessed Round Trimless Black	
TLSW = Recessed Square Trimless White	
TLSS = Recessed Square Trimless Silver	
TLSB = Recessed Square Trimless Black	

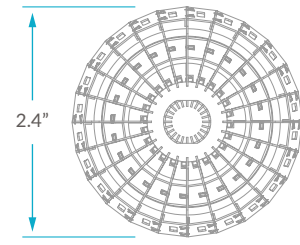
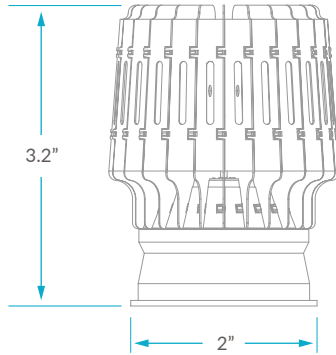
**MODULE**



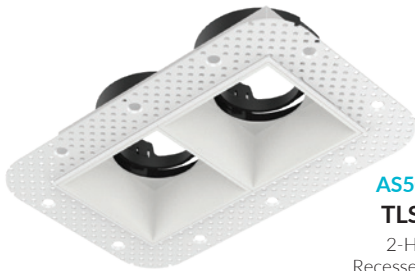
**TRIMS**



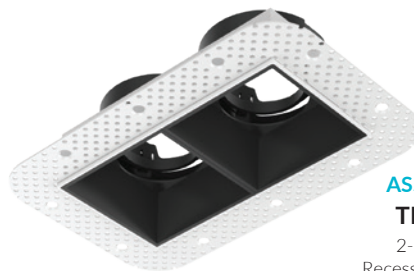
**LED MODULE**



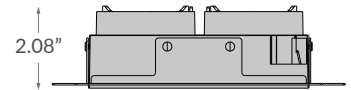
**2-HEAD SQUARE TRIMLESS \*ADJUSTABLE**



**AS50225**  
**TLSW2**  
2-HEAD  
Recessed Square  
Trimless White



**AS50226**  
**TLSB2**  
2-HEAD  
Recessed Square  
Trimless Black



5.51" x 2.83"  
7.36" x 4.64"

**CUTOUT: 5.78" x 3.14"**  
**PLATE (KNOCKOUT #): LR41007 (#1)**  
*\*PLEASE NOTE THIS IS AN EXACT FIT*

**ROUND TRIMLESS**



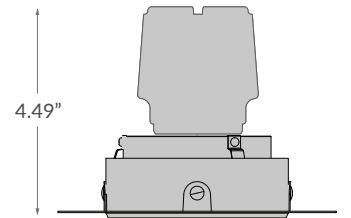
**AS50217**  
**TLRW**  
Recessed Round  
Trimless White



**AS50218**  
**TLRB**  
Recessed Round  
Trimless Black

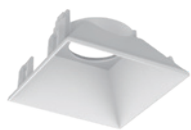


**AS50219**  
**TLRS**  
Recessed Round  
Trimless Silver

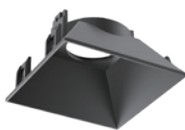


**CUTOUT: 3.15"**  
**PLATE (KNOCKOUT #): LR41002 (#0)**

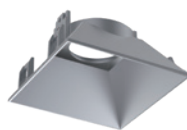
**SQUARE TRIMLESS**



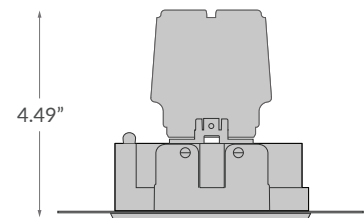
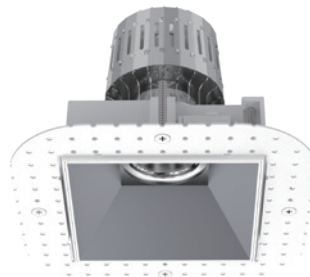
**AS50220**  
**TLSW**  
Recessed Square  
Trimless White



**AS50221**  
**TLSB**  
Recessed Square  
Trimless Black



**AS50222**  
**TLSS**  
Recessed Square  
Trimless Silver



**CUTOUT: 4.09"**  
**PLATE (KNOCKOUT #): LR41005 (#1)**

**PINHOLE INTERCHANGEABLE TRIMS**

RECESSED MODULE TRIM

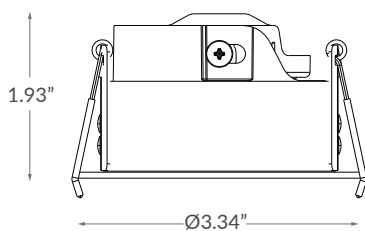


**ARWWB**  
WHITE/BLACK



**ARBBG**  
BLACK/GOLD

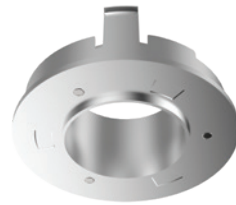
DIMENSIONS



CUTOUT: Ø2.95"

PLATE (KNOCKOUT #):  
LR41002 (#0)  
LR41006 (#1)

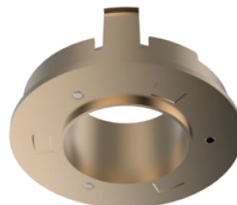
REFLECTOR



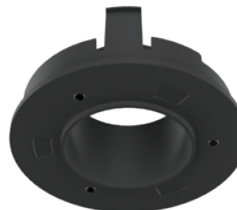
**AS50252**  
METALLIC



**AS50253**  
WHITE

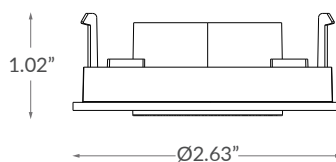


**AS50254**  
GOLD

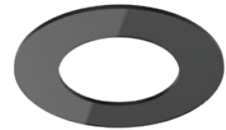


**AS50255**  
BLACK

DIMENSIONS



TRIM



**AS50260**  
MATTE BLACK



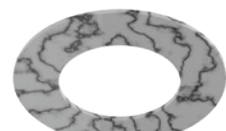
**AS50261**  
GLOSS BLACK



**AS50262**  
WOOD

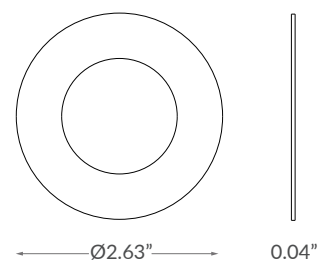


**AS50263**  
WHITE



**AS50264**  
MARBLE



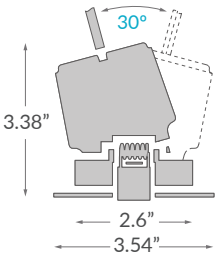


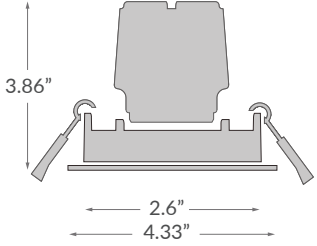


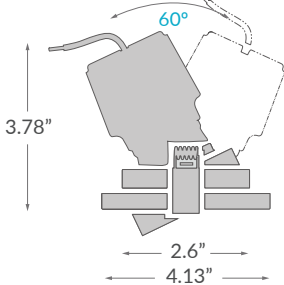


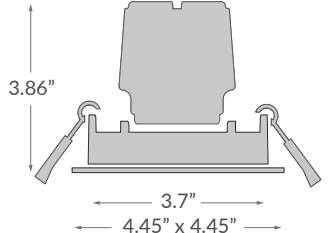
DIMENSIONS



**TRIMS**

MODEL		DIMENSIONS
<p><b>WRR</b> Recessed Round</p>  <p><b>BRR</b> Recessed Round</p> 		 <p><b>CUTOUT: 2.75"</b> <b>PLATE (KNOCKOUT #): LR41004 (1)</b></p>
<p><b>WRS</b> Recessed Square</p> 		 <p><b>CUTOUT: 2.75"</b> <b>PLATE (KNOCKOUT #): LR41004 (1)</b></p>
<p><b>WRIR</b> Recessed IP44 Round (WET LOCATION RATED)</p> 		 <p><b>CUTOUT: 3"</b> <b>PLATE (KNOCKOUT #): LR41002 (#0)</b></p>
<p><b>WRFR</b> Recessed Reflector Round</p> 		 <p><b>CUTOUT: 3"</b> <b>PLATE (KNOCKOUT #): LR41002 (#0)</b></p>



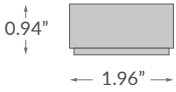
**TRIMS**

MODEL		DIMENSIONS
<p><b>WRGSR</b> Recessed 30° Gimbal Small Round</p> 		 <p><b>CUTOUT: 3"</b> <b>PLATE (KNOCKOUT #): LR41002 (#0)</b></p>
<p><b>WRGUR</b> Recessed Gimbal Universal Round</p> 		 <p><b>CUTOUT: 3.74"</b> <b>PLATE (KNOCKOUT #): LR41004 (#2)</b></p>
<p><b>WRGR</b> Recessed 60° Gimbal Round</p> 		 <p><b>CUTOUT: 3.5"</b> <b>PLATE (KNOCKOUT #): LR41004 (#2)</b></p>
<p><b>WRGUS</b> Recessed Gimbal Universal Square</p> 		 <p><b>CUTOUT: 3.74"</b> <b>PLATE (KNOCKOUT #): LR41004 (#2)</b></p>


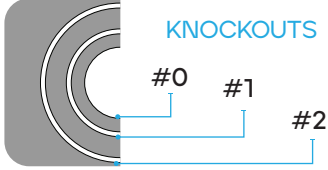
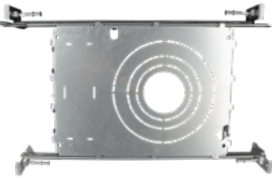
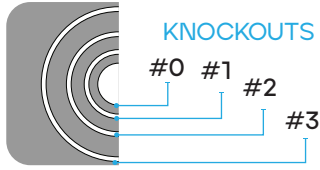
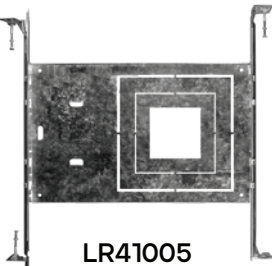
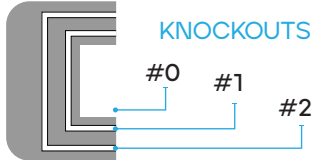
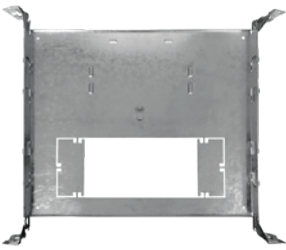
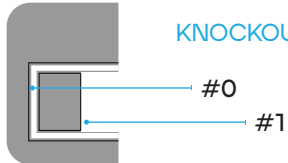

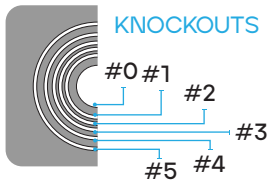
**TRIMS**

MODEL			DIMENSIONS
<p><b>WRDR</b> Recessed Deep Round</p>			 <p><b>CUTOUT: 3.50"</b> <b>PLATE (KNOCKOUT #): LR41004 (#2)</b></p>
<p><b>WRAFS</b> Recessed Adjustable Reflector Square</p>			 <p><b>CUTOUT: 3"</b> <b>PLATE (KNOCKOUT #): LR41002 (#0)</b></p>
<p><b>WRAFR</b> Recessed Adjustable Reflector Round</p>			 <p><b>CUTOUT: 3"</b> <b>PLATE (KNOCKOUT #): LR41002 (#0)</b></p>

**EXTENDERS**

MODEL			DIMENSIONS	
<p><b>RARW</b> White Trim Extender</p>		<p><b>RARB</b> Black Trim Extender</p>		

**MOUNTING PLATE**

MODEL	KNOCKOUT	KNOCKOUT SIZE												
 <p>LR41002</p>	 <p>KNOCKOUTS</p>	<p>KNOCKOUT SIZE</p> <table border="1"> <tr> <td>#0</td> <td>Ø3.14" (Ø80 mm)</td> </tr> <tr> <td>#1</td> <td>Ø4.33" (Ø110 mm)</td> </tr> <tr> <td>#2</td> <td>Ø6.29" (Ø160 mm)</td> </tr> </table>	#0	Ø3.14" (Ø80 mm)	#1	Ø4.33" (Ø110 mm)	#2	Ø6.29" (Ø160 mm)						
#0	Ø3.14" (Ø80 mm)													
#1	Ø4.33" (Ø110 mm)													
#2	Ø6.29" (Ø160 mm)													
 <p>LR41004</p>	 <p>KNOCKOUTS</p>	<p>KNOCKOUT SIZE</p> <table border="1"> <tr> <td>#0</td> <td>Ø2.125" (Ø54 mm)</td> </tr> <tr> <td>#1</td> <td>Ø2.83" (Ø72 mm)</td> </tr> <tr> <td>#2</td> <td>Ø3.75" (Ø95 mm)</td> </tr> <tr> <td>#3</td> <td>Ø5.19" (Ø132 mm)</td> </tr> </table>	#0	Ø2.125" (Ø54 mm)	#1	Ø2.83" (Ø72 mm)	#2	Ø3.75" (Ø95 mm)	#3	Ø5.19" (Ø132 mm)				
#0	Ø2.125" (Ø54 mm)													
#1	Ø2.83" (Ø72 mm)													
#2	Ø3.75" (Ø95 mm)													
#3	Ø5.19" (Ø132 mm)													
 <p>LR41005</p>	 <p>KNOCKOUTS</p>	<p>KNOCKOUT SIZE</p> <table border="1"> <tr> <td>#0</td> <td>2.75"x2.75" (70 mm)</td> </tr> <tr> <td>#1</td> <td>4.25"x4.25" (108 mm)</td> </tr> <tr> <td>#2</td> <td>6.29"x6.29" (160 mm)</td> </tr> </table>	#0	2.75"x2.75" (70 mm)	#1	4.25"x4.25" (108 mm)	#2	6.29"x6.29" (160 mm)						
#0	2.75"x2.75" (70 mm)													
#1	4.25"x4.25" (108 mm)													
#2	6.29"x6.29" (160 mm)													
 <p>LR41007</p>	 <p>KNOCKOUTS</p>	<p>KNOCKOUT SIZE</p> <table border="1"> <tr> <td>#0</td> <td>7.36"x3.74" (187x95mm)</td> </tr> <tr> <td>#1</td> <td>10.82"x3.74" (275x95 mm)</td> </tr> </table>	#0	7.36"x3.74" (187x95mm)	#1	10.82"x3.74" (275x95 mm)								
#0	7.36"x3.74" (187x95mm)													
#1	10.82"x3.74" (275x95 mm)													
 <p>LR41006</p>	 <p>KNOCKOUTS</p>	<p>KNOCKOUT SIZE</p> <table border="1"> <tr> <td>#0</td> <td>Ø2.12" (Ø54 mm)</td> </tr> <tr> <td>#1</td> <td>Ø3.15" (Ø80 mm)</td> </tr> <tr> <td>#2</td> <td>Ø3.75" (Ø95 mm)</td> </tr> <tr> <td>#3</td> <td>Ø4.25" (Ø108 mm)</td> </tr> <tr> <td>#4</td> <td>Ø5.25" (Ø132 mm)</td> </tr> <tr> <td>#5</td> <td>Ø6.25" (Ø159 mm)</td> </tr> </table>	#0	Ø2.12" (Ø54 mm)	#1	Ø3.15" (Ø80 mm)	#2	Ø3.75" (Ø95 mm)	#3	Ø4.25" (Ø108 mm)	#4	Ø5.25" (Ø132 mm)	#5	Ø6.25" (Ø159 mm)
#0	Ø2.12" (Ø54 mm)													
#1	Ø3.15" (Ø80 mm)													
#2	Ø3.75" (Ø95 mm)													
#3	Ø4.25" (Ø108 mm)													
#4	Ø5.25" (Ø132 mm)													
#5	Ø6.25" (Ø159 mm)													



## 7DLMD SPECIFICATIONS

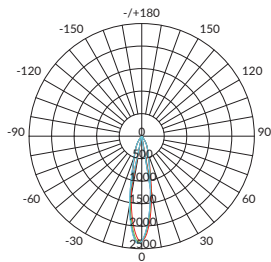
MODEL	GENERAL					LIFE			
	DIMENSIONS (IN)			DRIVER DIMENSIONS (IN)	FINISH	HOURS	YEARLY COST	YEARS	WARRANTY
	LENS WIDTH	HEAT SINK WIDTH	HEIGHT						
LED7DLMD	2	2.4	3.2	6L X 2.5W X 2H	ALUMINUM WITH NICKEL PLATING	50,000	\$0.84	45.7	5 YEAR

MODEL	ELECTRICAL (MODULE)					
	CHIP	POWER Wattage	INPUT VOLTS	POWER FACTOR	MIN OPERATING TEMP Fahrenheit	MAX OPERATING TEMP Fahrenheit
LED7DLMD	CITIZEN	7	120V	0.9	-4°	104°

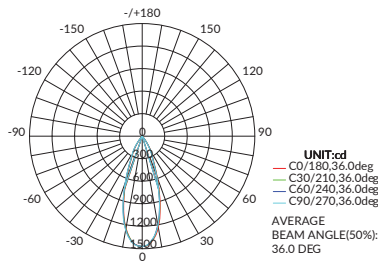
MODEL	ELECTRICAL (DRIVER)											
	DRIVER	SYSTEM WATT	INPUT VOLTS VAC	OUTPUT VOLTS Min-Max VAC	CURRENT mA	INPUT AMP	THD Total Harmonic Distortion	INPUT FREQUENCY HZ	DIMMER TYPE	DIMMING RANGE	IP RATING	IC IC Rated
LED7DLMD	ESPEN	8.5	120V	30-38	200mA	0.5mA	20%	60	Leading-Edge/TRIAC	5%~100%	IP20 <small>*IP44 TRIM AVAILABLE</small>	YES

MODEL	PHOTOMETRIC								CERTIFICATIONS		<b>&lt;LIST OF COMPATIBLE DIMMERS&gt;</b> • LUTRON DVCL-153PL • LUTRON S-600P • LEVITON IPIO6 • LEVITON CTCL-153P  <small>*The presence of a dimmer on this chart is not a guarantee of the compatibility of the module in any particular installation. Absence of a dimmer on this chart does not imply incompatibility. Please reference the manufacturer's instructions for installation and further information.</small>
	CCT Correlated Color Temperature	LUMEN Delivered Lumen	CBCP Center Beam Candle Power			LM/W Lumen Per Watt	UGR Unified Glare Rating	CRI Color Rendering Index	FCC	ETL	
			22°	36°	60°						
LED7DLMD/927	2700K - WARM WHITE	650	2386	1470	831	76	19	92	●	●	
LED7DLMD/930	3000K - SOFT WHITE	700	2584	1545	910	82	19	92	●	●	
LED7DLMD/940	4000K - COOL WHITE	750	2729	1643	969	88	19	92	●	●	

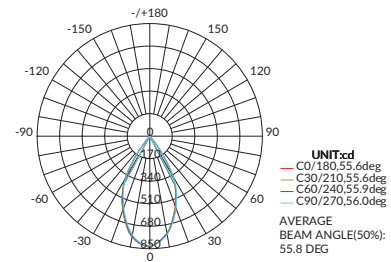
## PHOTOMETRY



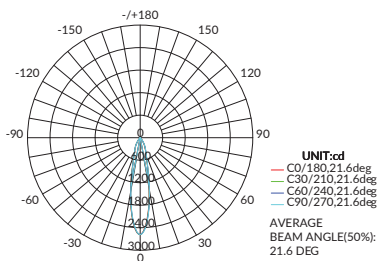
LED7DLMD/927/22D



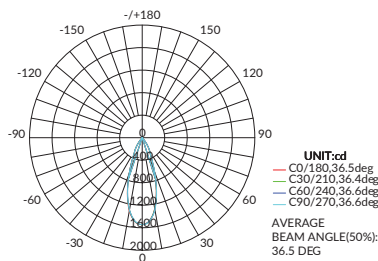
LED7DLMD/927/36D



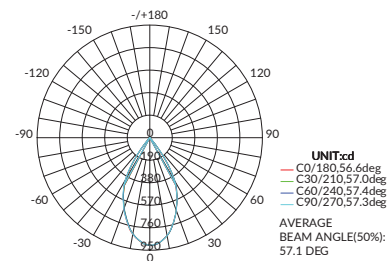
LED7DLMD/927/60D



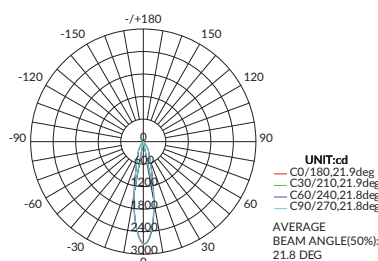
LED7DLMD/930/22D



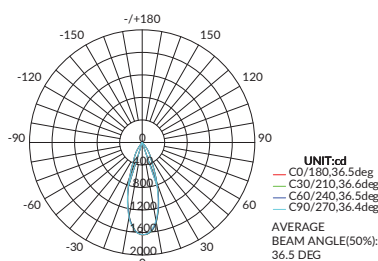
LED7DLMD/930/36D



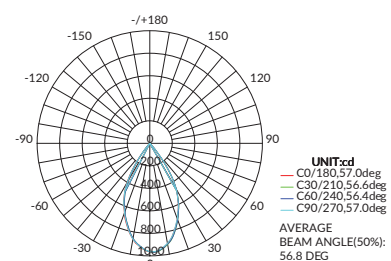
LED7DLMD/930/60D



LED7DLMD/940/22D



LED7DLMD/940/36D



LED7DLMD/940/60D

# 7DLMD

## CANDELA DISTRIBUTION

LED7DLMD/927/22D

Y	C0	C45	C90	C135	C180	C225	C270	C315
10	1243	1135	1092	1172	1344	1492	1582	1451
20	429.8	414.1	412.3	431.5	468.2	491.5	495.4	468.4
30	209.5	203.2	197.2	208.8	220.7	226.7	223.7	222.3
40	45.73	41.28	39.30	44.53	54.55	59.77	57.27	52.23
50	16.49	16.10	15.98	16.45	17.36	17.83	17.43	16.74
60	9.840	9.625	9.410	9.644	10.18	10.32	10.10	9.874
70	4.618	4.460	4.450	4.656	5.040	5.054	5.097	4.881
80	1.375	1.289	1.347	1.453	1.635	1.664	1.690	1.547
90	0.0320	0.0320	0.0341	0.0320	0.0213	0.0213	0.0213	0.0234

LED7DLMD/927/36D

Y	C0	C45	C90	C135	C180	C225	C270	C315
10	1236	1211	1205	1221	1246	1248	1271	1262
20	594.4	568.2	555.7	588.0	629.9	644.0	644.0	638.6
30	235.0	226.4	211.9	216.5	230.4	245.4	255.7	249.3
40	26.75	20.97	16.96	19.73	26.88	32.31	40.96	39.21
50	5.974	5.814	5.870	6.148	6.409	6.874	6.905	6.695
60	3.042	2.993	2.889	3.121	3.273	3.461	3.516	3.450
70	1.352	1.303	1.229	1.322	1.407	1.510	1.591	1.526
80	0.4650	0.4084	0.3607	0.3659	0.4212	0.5160	0.5298	0.5224
90	0.0298	0.0298	0.0256	0.0256	0.0192	0.0170	0.0149	0.0149

LED7DLMD/927/60D

Y	C0	C45	C90	C135	C180	C225	C270	C315
10	743.9	747.0	754.2	765.6	774.8	767.1	757.7	746.1
20	561.2	569.3	578.2	586.8	596.2	588.0	573.9	562.8
30	345.6	347.1	356.6	364.1	371.6	367.0	366.5	359.7
40	34.59	29.02	26.17	29.03	38.65	42.95	45.36	43.23
50	6.008	5.731	5.854	6.225	6.586	6.672	6.667	6.418
60	2.944	2.908	2.897	2.970	3.172	3.220	3.206	3.090
70	1.433	1.388	1.360	1.392	1.545	1.586	1.580	1.514
80	0.5377	0.4679	0.4398	0.4978	0.6446	0.7144	0.6999	0.6378
90	0.0298	0.0256	0.0298	0.0213	0.0149	0.0149	0.0149	0.0149

LED7DLMD/930/22D

Y	C0	C45	C90	C135	C180	C225	C270	C315
10	1365	1414	1422	1465	1487	1437	1429	1388
20	461.0	470.4	477.0	481.6	478.6	465.1	468.2	464.8
30	208.8	230.7	237.9	235.5	232.8	233.4	229.3	216.3
40	53.17	59.16	59.40	56.67	51.29	48.16	50.25	52.36
50	13.49	13.95	13.18	12.18	11.61	11.58	11.65	12.27
60	6.070	6.771	6.767	6.491	6.502	6.793	6.429	5.919
70	2.520	2.774	2.862	2.863	2.803	2.658	2.490	
80	0.7492	0.8019	0.8688	0.9509	0.9526	0.9046	0.8249	0.7787
90	0.0341	0.0341	0.0341	0.0320	0.0277	0.0256	0.0277	0.0256

LED7DLMD/930/36D

Y	C0	C45	C90	C135	C180	C225	C270	C315
10	1285	1292	1303	1314	1324	1301	1308	1293
20	634.9	639.3	646.3	661.8	677.3	669.0	670.3	650.2
30	253.8	260.9	259.0	261.0	263.2	256.5	254.8	252.3
40	43.74	46.56	45.35	48.26	45.17	37.58	40.07	43.14
50	7.633	7.689	7.590	7.532	7.380	7.245	7.352	7.434
60	3.899	3.965	3.882	4.004	3.950	3.857	3.865	3.939
70	1.674	1.734	1.745	1.773	1.793	1.659	1.689	1.686
80	0.4610	0.4574	0.4887	0.4914	0.4975	0.4671	0.4273	0.4523
90	0.0341	0.0341	0.0341	0.0320	0.0234	0.0234	0.0234	0.0256

LED7DLMD/930/60D

Y	C0	C45	C90	C135	C180	C225	C270	C315
10	840.3	840.7	839.6	832.8	827.6	821.5	827.6	832.7
20	653.4	654.6	652.2	645.4	637.8	626.9	641.8	645.2
30	414.3	428.4	415.9	409.8	401.3	405.8	414.6	409.7
40	59.55	64.01	65.05	60.50	59.75	57.01	59.02	59.34
50	7.802	8.175	8.349	8.211	8.214	8.030	8.099	7.796
60	3.674	3.866	3.823	3.825	3.793	3.754	3.771	3.656
70	1.621	1.709	1.712	1.696	1.685	1.631	1.645	1.593
80	0.5148	0.5422	0.5591	0.5656	0.5421	0.5334	0.5397	0.5335
90	0.0362	0.0362	0.0405	0.0383	0.0234	0.0213	0.0213	0.0234

LED7DLMD/940/22D

Y	C0	C45	C90	C135	C180	C225	C270	C315
10	1606	1675	1601	1520	1452	1368	1428	1503
20	533.4	552.4	530.7	502.1	477.1	457.3	475.5	503.7
30	254.3	254.8	255.7	246.8	229.8	217.4	235.6	249.6
40	67.73	72.57	70.40	58.97	49.11	40.87	45.85	56.57
50	14.30	16.44	15.69	13.94	12.29	11.60	12.12	12.55
60	6.908	7.267	7.626	7.280	6.702	6.333	6.921	6.966
70	2.943	3.059	3.143	3.021	2.860	2.726	2.880	2.901
80	0.9604	0.9956	0.9690	0.8933	0.8632	0.8215	0.8738	0.9088
90	0.0341	0.0341	0.0362	0.0362	0.0277	0.0298	0.0277	0.0277

LED7DLMD/940/36D

Y	C0	C45	C90	C135	C180	C225	C270	C315
10	1433	1446	1407	1356	1339	1323	1352	1381
20	746.5	772.5	730.9	691.3	659.4	630.7	661.9	700.3
30	291.4	300.2	287.7	270.2	254.0	242.0	257.6	272.9
40	62.25	75.80	64.95	46.46	37.11	30.42	32.02	42.34
50	8.365	8.822	8.924	8.184	7.789	7.298	7.301	7.660
60	4.346	4.550	4.459	4.270	4.047	3.784	3.873	4.032
70	1.922	2.079	1.992	1.900	1.772	1.625	1.690	1.744
80	0.5271	0.5830	0.5740	0.5191	0.4571	0.4395	0.4442	0.4757
90	0.0341	0.0320	0.0341	0.0341	0.0256	0.0256	0.0256	0.0256

LED7DLMD/940/60D

Y	C0	C45	C90	C135	C180	C225	C270	C315
10	905.2	910.4	901.8	881.2	864.6	856.8	864.8	882.9
20	715.6	728.9	713.1	679.2	660.2	643.3	655.5	682.7
30	468.4	478.8	466.5	438.9	407.2	382.6	402.6	443.8
40	82.26	95.66	85.50	64.43	47.31	39.43	46.55	64.07
50	8.853	9.207	8.953	8.858	8.605	8.152	8.303	8.811
60	4.202	4.340	4.281	4.140	3.938	3.760	3.827	4.082
70	1.851	1.941	1.889	1.833	1.735	1.646	1.679	1.780
80	0.6657	0.7059	0.6615	0.5869	0.5123	0.5014	0.4953	0.5845
90	0.0383	0.0362	0.0383	0.0383	0.0234	0.0213	0.0234	0.0234

## ZONAL LUMENS

LED7DLMD/927/22D

Y	ZONE	TOTAL	%LUM.LAMP
0-10	168.4	168.4	26.326.3
10-20	208.9	377.3	59.59
20-30	145.0	522.3	81.681.6
30-40	74.03	596.3	93.293.2
40-50	20.87	617.2	96.596.5
50-60	11.72	628.9	98.398.3
60-70	7.029	635.9	99.499.4
70-80	3.205	639.1	99.999.9
80-90	0.5650	639.7	100.100

LED7DLMD/927/36D

Y	ZONE	TOTAL	%LUM.LAMP
0-10	129.7	129.7	20.120.1
10-20	254.9	384.5	59.559.5
20-30	171.7	556.2	86.86
30-40	74.57	630.8	97.697.6
40-50	8.392	639.2	98.989.8
50-60	4.105	643.3	99.599.5
60-70	2.221	645.5	99.899.8
70-80	0.9105	646.4	100.100
80-90	0.2106	646.6	100.100

LED7DLMD/927/60D

Y	ZONE	TOTAL	%LUM.LAMP
0-10	75.44	75.44	12.312.3
10-20	187.7	263.1	43.143.1
20-30	216.8	479.9	78.578.5
30-40	115.0	594.9	97.397.3
40-50	8.719	603.6	98.989.8
50-60	3.995	607.6	99.499.4
60-70	2.157	609.7	99.899.8
70-80	1.061	610.8	100.100
80-90	0.2703	611.1	100.100

## LUMINANCE DATA (CD/M<sup>2</sup>)

LED7DLMD/927/22D

G(DEG)	C0/180	C90/270
85	1855	2126
80	4039	3958
75	5589	5437
70	6890	6638
65	8332	7894
60	10041	9602
55	11613	11364
50	13091	12686
45	16575	15572

LED7DLMD/927/36D

G(DEG)	C0/180	C90/270
85	1064	540
80	1366	1060
75	1528	1308
70	2017	1833
65	2544	2440
60	3104	2948
55	3838	3667
50	4742	4660
45	5936	5935

LED7DLMD/927/60D

G(DEG)	C0/180	C90/270
85	981	692
80	1580	1292
75	1850	1761
70	2137	2029
65	2553	2442
60	3004	2966
55	3759	3712
50	4769	

## 9DLMD SPECIFICATIONS

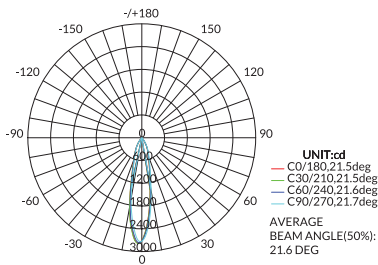
MODEL	GENERAL					LIFE			
	DIMENSIONS (IN)			DRIVER DIMENSIONS (IN)	FINISH	HOURS	YEARLY COST	YEARS	WARRANTY
	LENS WIDTH	HEAT SINK WIDTH	HEIGHT						
LED9DLMD	2	2.4	3.2	6L X 2.5W X 2H	ALUMINUM WITH NICKEL PLATING	50,000	\$1.08	45.7	5 YEAR

MODEL	ELECTRICAL (MODULE)					
	CHIP	POWER Wattage	INPUT VOLTS	POWER FACTOR	MIN OPERATING TEMP Fahrenheit	MAX OPERATING TEMP Fahrenheit
LED9DLMD	CITIZEN	9	120V	0.9	-4°	104°

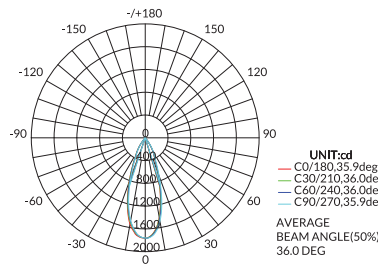
MODEL	ELECTRICAL (DRIVER)											
	DRIVER	SYSTEM WATT	INPUT VOLTS VAC	OUTPUT VOLTS Min-Max VAC	CURRENT mA	INPUT AMP	THD Total Harmonic Distortion	INPUT FREQUENCY HZ	DIMMER TYPE	DIMMING RANGE	IP RATING	IC IC Rated
LED9DLMD	ESPEN	11	120V	30-38	260mA	0.5mA	20%	60	Leading-Edge/TRIAC	5%~100%	IP20 <small>*IP44 TRIM AVAILABLE</small>	NO

MODEL	PHOTOMETRIC							CERTIFICATIONS		<b>&lt;LIST OF COMPATIBLE DIMMERS&gt;</b> • LUTRON DVCL-153PL • LUTRON S-600P • LEVITON IPIO6 • LEVITON CTCL-153P <small>*The presence of a dimmer on this chart is not a guarantee of the compatibility of the module in any particular installation. Absence of a dimmer on this chart does not imply incompatibility. Please reference the manufacturer's instructions for installation and further information.</small>	
	CCT Correlated Color Temperature	LUMEN Delivered Lumen	CBCP Center Beam Candle Power			LM/W Lumen Per Watt	UGR Unified Glare Rating	CRI Color Rendering Index	FCC		ETL
			22°	36°	60°						
LED9DLMD/927	2700K - WARM WHITE	800	2791	1764	999	73	20	92	●	●	
LED9DLMD/930	3000K - SOFT WHITE	850	3093	1838	1085	77	20	92	●	●	
LED9DLMD/940	4000K - COOL WHITE	900	3269	1964	1159	82	20	92	●	●	

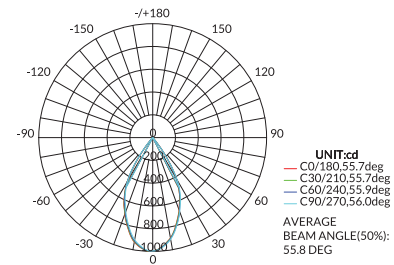
## PHOTOMETRY



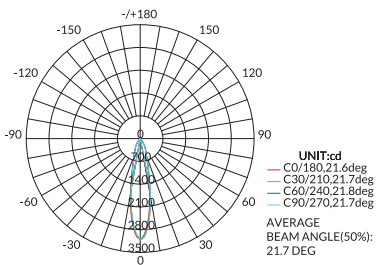
LED9DLMD/927/22D



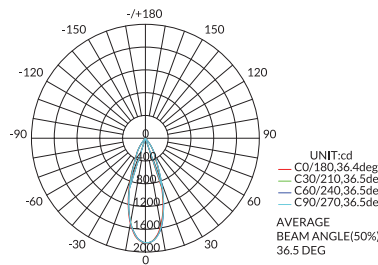
LED9DLMD/927/36D



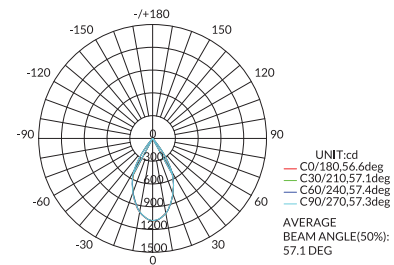
LED9DLMD/927/60D



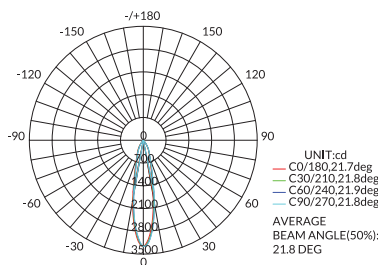
LED9DLMD/930/22D



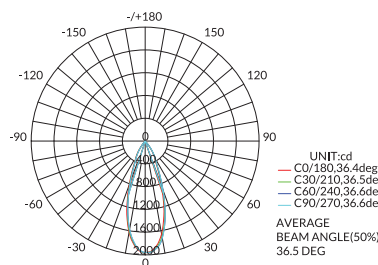
LED9DLMD/930/36D



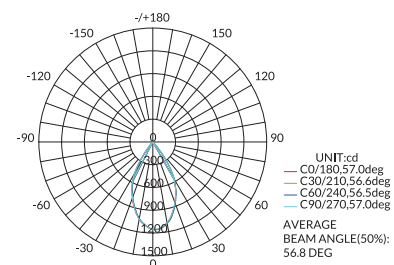
LED9DLMD/930/60D



LED9DLMD/940/22D



LED9DLMD/940/36D



LED9DLMD/940/60D

# 9DLMD

## CANDELA DISTRIBUTION

LED9DLMD/927/22D

Y	C0	C45	C90	C135	C180	C225	C270	C315
10	1253	1296	1410	1630	1842	1807	1616	1385
20	505.0	523.7	555.7	600.9	628.0	598.9	565.1	523.4
30	232.1	242.7	265.0	273.8	283.1	270.8	267.2	248.4
40	45.82	50.63	60.31	69.81	73.74	66.99	60.82	51.14
50	19.16	19.59	20.05	21.15	21.71	20.80	20.03	19.61
60	11.42	11.42	11.76	12.13	12.56	12.23	12.17	11.98
70	5.350	5.473	5.686	5.929	6.228	6.162	5.910	5.628
80	1.539	1.606	1.753	1.929	2.173	2.099	1.894	1.649
90	0.0383	0.0383	0.0383	0.0383	0.0256	0.0277	0.0277	0.0298

LED9DLMD/927/36D

Y	C0	C45	C90	C135	C180	C225	C270	C315
10	1421	1446	1491	1530	1542	1494	1479	1436
20	636.9	662.2	712.4	785.6	826.7	802.9	747.8	680.6
30	256.0	272.1	286.3	293.7	309.6	298.3	279.9	259.2
40	20.64	25.60	33.55	47.71	52.00	43.14	32.75	22.71
50	6.811	7.149	7.648	8.241	9.070	8.487	7.712	6.843
60	3.411	3.494	3.763	4.111	4.539	4.378	3.943	3.436
70	1.516	1.501	1.642	1.841	2.113	1.978	1.715	1.533
80	0.4440	0.4403	0.5419	0.5938	0.7853	0.6716	0.5616	0.4947
90	0.0341	0.0320	0.0341	0.0234	0.0192	0.0213	0.0213	0.0192

LED9DLMD/927/60D

Y	C0	C45	C90	C135	C180	C225	C270	C315
10	895.4	899.6	906.5	921.6	931.6	922.5	911.8	899.1
20	677.1	685.5	693.9	704.6	716.5	706.0	691.8	677.8
30	418.0	419.1	428.6	436.6	446.7	441.6	441.6	434.8
40	42.73	35.49	31.25	33.89	45.92	55.37	55.23	56.90
50	7.123	6.817	6.978	7.407	7.797	7.959	7.961	7.669
60	3.447	3.430	3.417	3.513	3.683	3.802	3.806	3.677
70	1.650	1.618	1.595	1.631	1.760	1.854	1.858	1.793
80	0.6188	0.5488	0.5144	0.5851	0.7425	0.8361	0.8297	0.7572
90	0.0362	0.0362	0.0362	0.0362	0.0107	0.0170	0.0085	0.0192

LED9DLMD/930/22D

Y	C0	C45	C90	C135	C180	C225	C270	C315
10	1678	1812	1815	1777	1726	1616	1611	1616
20	569.1	594.6	592.3	578.3	567.7	533.2	523.2	536.2
30	284.0	289.3	267.8	272.0	275.6	262.3	258.0	271.5
40	66.01	73.61	70.74	70.93	63.99	55.21	53.05	59.98
50	14.43	15.16	16.47	16.47	15.56	13.89	13.23	13.57
60	7.859	7.676	7.535	7.972	8.164	7.505	7.298	7.616
70	3.250	3.223	3.164	3.287	3.420	3.255	3.135	3.170
80	1.012	1.047	1.027	1.023	1.033	1.009	0.9780	0.9963
90	0.0405	0.0405	0.0426	0.0383	0.0320	0.0320	0.0320	0.0320

LED9DLMD/930/36D

Y	C0	C45	C90	C135	C180	C225	C270	C315
10	1552	1596	1598	1559	1524	1488	1502	1524
20	780.7	829.4	832.2	808.1	782.5	733.1	733.8	747.7
30	311.6	319.3	321.6	312.5	304.7	284.4	289.1	297.1
40	56.63	59.39	65.70	55.48	45.33	38.99	45.45	52.54
50	8.931	9.075	9.153	8.899	8.715	8.427	8.741	8.971
60	4.711	4.750	4.851	4.668	4.682	4.444	4.575	4.530
70	2.052	2.141	2.173	2.083	2.036	1.954	2.065	2.015
80	0.5953	0.5701	0.5890	0.5531	0.5251	0.5333	0.5528	0.5845
90	0.0405	0.0405	0.0426	0.0405	0.0298	0.0277	0.0298	0.0298

LED9DLMD/930/60D

Y	C0	C45	C90	C135	C180	C225	C270	C315
10	999.8	1003	1001	992.6	986.8	977.8	985.4	992.4
20	778.0	779.3	777.0	769.2	760.4	747.4	765.0	769.2
30	494.7	510.7	496.0	487.1	477.8	485.3	494.0	489.1
40	65.90	76.39	74.25	71.58	70.49	64.95	69.88	66.49
50	9.309	9.763	9.944	9.787	9.804	9.584	9.636	9.241
60	4.390	4.630	4.569	4.556	4.533	4.478	4.497	4.346
70	1.945	2.048	2.045	2.018	2.003	1.948	1.958	1.906
80	0.6152	0.6571	0.6680	0.6699	0.6484	0.6336	0.6375	0.6339
90	0.0469	0.0469	0.0490	0.0469	0.0256	0.0277	0.0277	0.0277

LED9DLMD/940/22D

Y	C0	C45	C90	C135	C180	C225	C270	C315
10	1745	1926	1966	1941	1868	1714	1673	1666
20	592.0	630.2	642.2	643.0	625.0	569.5	553.5	558.8
30	286.9	310.2	318.8	323.4	309.5	264.9	243.2	260.0
40	66.95	78.40	79.66	84.06	73.03	62.13	57.03	60.98
50	16.42	16.13	15.76	15.76	15.70	15.02	15.53	16.07
60	8.482	8.571	8.692	8.983	8.577	7.433	7.383	7.987
70	3.521	3.727	3.742	3.772	3.567	3.129	3.056	3.232
80	1.033	1.249	1.297	1.285	1.142	0.9451	0.8609	0.8983
90	0.0426	0.0405	0.0405	0.0405	0.0341	0.0341	0.0341	0.0320

LED9DLMD/940/36D

Y	C0	C45	C90	C135	C180	C225	C270	C315
10	1659	1734	1731	1683	1627	1575	1572	1609
20	842.2	920.1	918.6	882.3	822.2	762.0	760.1	783.6
30	330.9	354.0	357.5	344.7	323.8	294.2	290.5	305.3
40	56.94	78.35	85.39	71.44	52.19	38.32	38.86	41.62
50	9.407	10.16	10.39	10.08	9.537	8.955	8.903	9.153
60	5.055	5.204	5.335	5.226	4.992	4.632	4.620	4.741
70	2.244	2.369	2.383	2.320	2.130	1.960	1.992	2.075
80	0.6402	0.6617	0.6700	0.6297	0.5655	0.5397	0.5187	0.5802
90	0.0405	0.0405	0.0405	0.0405	0.0298	0.0298	0.0298	0.0320

LED9DLMD/940/60D

Y	C0	C45	C90	C135	C180	C225	C270	C315
10	1082	1088	1078	1054	1033	1024	1034	1054
20	854.0	870.7	852.5	812.8	788.7	770.3	782.9	815.3
30	559.6	572.1	557.4	526.3	487.4	458.2	482.8	530.6
40	97.82	116.1	101.9	77.27	56.83	50.21	56.01	76.74
50	10.50	10.95	10.69	10.57	10.18	9.706	9.908	10.50
60	4.983	5.160	5.100	4.941	4.674	4.482	4.578	4.868
70	2.198	2.316	2.260	2.190	2.047	1.966	2.005	2.132
80	0.7853	0.8378	0.7853	0.6996	0.6059	0.5974	0.5952	0.7018
90	0.0469	0.0447	0.0469	0.0426	0.0277	0.0298	0.0277	0.0277

## ZONAL LUMENS

LED9DLMD/927/22D

Y	ZONE	TOTAL	%LUM.LAMP
0-10	195.9	195.9	25.5255
10-20	251.2	447.0	58.2582
20-30	179.6	626.6	81.6816
30-40	89.26	715.9	93.2932
40-50	25.19	741.1	96.5965
50-60	14.12	755.2	98.3983
60-70	8.505	763.7	99.4994
70-80	3.892	767.6	99.9999
80-90	0.6792	768.3	100.100

LED9DLMD/927/36D

Y	ZONE	TOTAL	%LUM.LAMP
0-10	155.0	155.0	20.20
10-20	304.6	459.6	59.2592
20-30	207.6	667.2	85.9859
30-40	90.02	757.2	97.5975
40-50	10.29	767.5	98.8988
50-60	4.976	772.5	99.5995
60-70	2.690	775.2	99.8998
70-80	1.123	776.3	100.100
80-90	0.2687	776.6	100.100

LED9DLMD/927/60D

Y	ZONE	TOTAL	%LUM.LAMP
0-10	90.78	90.78	12.3123
10-20	225.9	316.7	43.43
20-30	261.0	577.6	78.5785
30-40	138.8	716.5	97.4974
40-50	10.48	727.0	98.8988
50-60	4.744	731.7	99.4994
60-70	2.535	734.2	99.8998
70-80	1.242	735.5	100.100
80-90	0.3227	735.8	100.100

## LUMINANCE DATA (CD/M<sup>2</sup>)

LED9DLMD/927/22D

G(°)	C0/180	C90/270
85	1930	2186
80	4523	5149
75	6468	7001
70	7980	8483
65	9539	10054
60	11656	12005
55	13770	13941
50	15208	15913
45	18358	21079

LED9DLMD/927/36D

G(°)	C0/180	C90/270
85	688	1040
80	1304	1592
75	1661	1851
70	2262	2450
65	2991	3154
60	3481	3840
55	4251	4830
50	5406	6071
45	7121	7753

LED9DLMD/927/60D

G(°)	C0/180	C90/270
85	1144	817
80	1818	1512
75	2132	2064
70	2462	2379
65	2960	2877
60	3517	3487
55	4438	4398
50	5654	5539
45	7084	6872

# 13DLMD SPECIFICATIONS

MODEL	DIMENSIONS (IN)			GENERAL			LIFE			
	LENS WIDTH	HEAT SINK WIDTH	HEIGHT	DRIVER DIMENSIONS (IN)		FINISH	HOURS	YEARLY COST	YEARS	WARRANTY
LED13DLMD	2	2.4	3.2	6L X 2.5W X 2H		ALUMINUM WITH NICKEL PLATING	50,000	\$1.08	45.7	5 YEAR

MODEL	ELECTRICAL (MODULE)									
	CHIP	POWER Wattage	INPUT VOLTS		POWER FACTOR	MIN OPERATING TEMP Fahrenheit		MAX OPERATING TEMP Fahrenheit		
LED13DLMD	CITIZEN	13	120V		0.9	-4°		104°		

MODEL	ELECTRICAL (DRIVER)											
	DRIVER	SYSTEM WATT	INPUT VOLTS VAC	OUTPUT VOLTS Min-Max VAC	CURRENT mA	INPUT AMP	THD Total Harmonic Distortion	INPUT FREQUENCY HZ	DIMMER TYPE	DIMMING RANGE	WET LOCATION IP Rating	IC* IC Rated
LED13DLMD	ESPEN	15	120V	30-38	350mA	0.5mA	20%	60	Leading-Edge/TRIAC	5%~100%	IP20	NO

MODEL	PHOTOMETRIC								CERTIFICATIONS	
	CCT Correlated Color Temperature	LUMEN Delivered Lumen	CBCP Center Beam Candle Power			LM/W Lumen Per Watt	UGR Unified Glare Rating	CRI Color Rendering Index	FCC	ETL
			22°	36°	60°					
LED13DLMD/927	2700K - WARM WHITE	1200	5050	2872	1705	92	20	90	●	ETL
LED13DLMD/930	3000K - SOFT WHITE	1300	5130	3035	1781	100	20	90	●	ETL
LED13DLMD/935	3500K - NATURAL	1400	5232	3288	1996	107	20	90	●	ETL
LED13DLMD/940	4000K - COOL WHITE	1400	5232	3288	1996	107	20	90	●	ETL

**<LIST OF COMPATIBLE DIMMERS>**

- LUTRON DVCL-153PL
- LUTRON S-600P
- LEVITON IPI06
- LEVITON CTCL-153P

\*The presence of a dimmer on this chart is not a guarantee of the compatibility of the module in any particular installation. Absence of a dimmer on this chart does not imply incompatibility. Please reference the manufacturer's instructions for installation and further information.

## PHOTOMETRY





**AKLOW**  
BY **LUXRITE**®

33 Randolph Avenue  
Avenel, NJ 07001  
732.882.1500

[luxrite.com](http://luxrite.com)