

DLMD - LED MODULE AND DRIVER INSTALL GUIDE

Read the installation instructions and all product labels before installing the fixture. This product must be installed in full accordance with applicable electrical and building. Installation should be performed by a qualified electrician in accordance with the national electrical standards and relevant local codes.

TO PREVENT ELECTRICAL SHOCK, POWER SHOULD BE TURNED OFF FROM THE ELECTRICAL PANEL BEFORE INSTALLATION OR MAINTENANCE.

SAFETY WARNINGS

- Turn off the electricity prior to the installation of the fixture.
- Connect to a 120V supply in accordance with relevant electrical standards.
- Make sure that all connections are tight and that there is no loose strands.
- Do not make any open holes or alter an enclosure of wiring or electrical components during the installation.
- The module is intended for mounting in an indoor application only.
- Suitable for dry locations.
- 7W module only – Suitable for IC installation.
- 9W module only – Do not cover the module with insulation material.
- 13W module only – Do not cover the module with insulation material.

THIS FIXTURE INCLUDES ONE LED MODULE AND ONE DRIVER.

INSTALLATION INSTRUCTIONS

1. Turn off the power from the electrical panel before starting the installation.
2. Locate a suitable position to place the fixture and cut a hole in the ceiling according to the size of the selected trim (see selection listed below – trims are sold separately).
3. Run the electrical wire from the switch (power supply) through the mounting hole.
4. Open the driver box and remove the appropriate knockouts. (Fig. 1)
5. Insert the electrical supply cable through the knockout and fasten with a channel connect or (not included).
6. Using wire caps –connect green/yellow wire to the ground wire (copper). Connect white wire of cable to white wire of the box. Connect black wire of cable to black wire of the box.
7. Place all wiring and connections back into the driver box and close the cover.
8. Unscrew and remove the top ring of the LED module. (Fig. 2)
9. Screw the LED module onto the selected trim (sold separately)/ (Fig. 3)
10. Using the luminaire disconnect, connect the white wire of the driver with the white wire of the LED downlight.
11. Insert driver box through the mounting hole and secure to ceiling joist.
12. Bend back the two torsion springs of the trim and fit the fixture in the ceiling hole (Fig. 4) Slowly release unit up to the ceiling and the springs will hold fixture in place.
13. Once installation is complete, switch on power to confirm that the LED fixture is installed properly.

3" SECURITY CLEARANCE FOR NON IC RATED

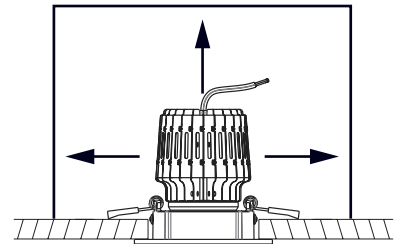


FIG. 1

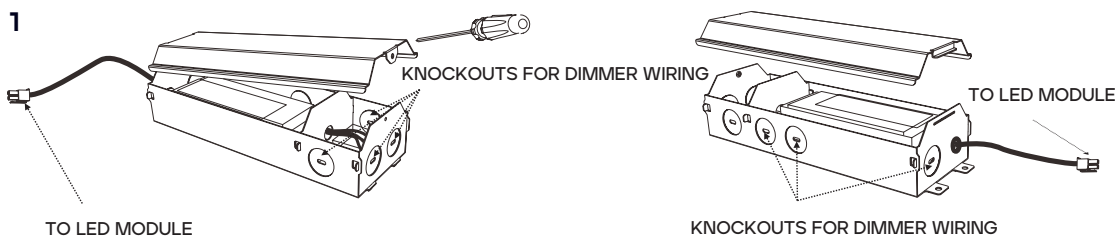


FIG. 2

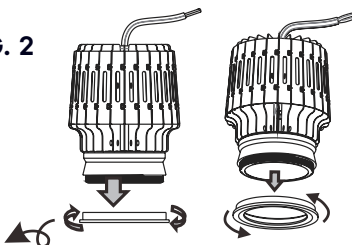


FIG. 3

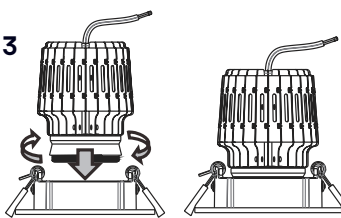
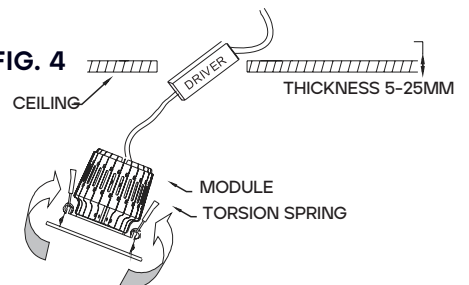
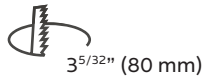


FIG. 4

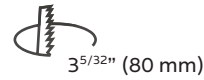


TRIMS & CUTTING DIAMETER

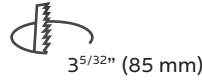
AS50217



AS50218



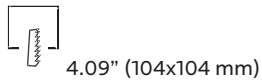
AS50219



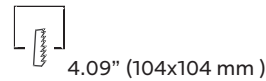
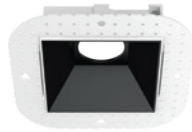
AS50217
AS50218
AS50219
ROUND
TRIMLESS



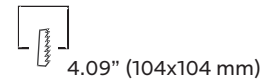
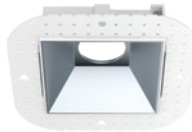
AS50220



AS50221



AS50222



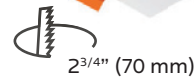
AS50220
AS50221
AS50222
SQUARE
TRIMLESS



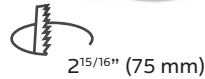
AS50201



AS50202



AS50203



AS50204



AS50205



AS50206



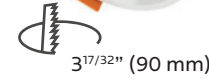
AS50207



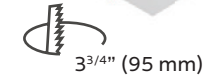
AS50208



AS50209



AS50212



AS50213

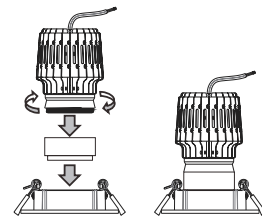


TRIM EXTENDER

AS50235



AS50236



AS50235/AS50236
TRIM EXTENDER