

**FREE  
PATTERN**

**Freshly Made** to bring your ideas to life.



## Tiny Adventures Dress (A-008B) by Camelot Design Studio

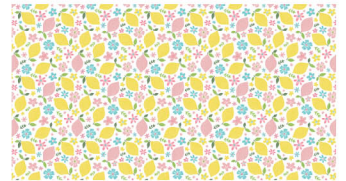
Difficulty Level: Intermediate  
Finished Size: Fits children 1-2 yrs old



### Fabric requirements



Fabric A: 89220102 02  
1 yard



Fabric B: 89220103 01  
1/2 yard

Exclusive Dress Design by Camelot Design Studio for Camelot Fabrics  
The direction of the fabrics in the digital imagery may not be accurate to the final product.  
© Puck Selders



camelotfabrics.com  
info@camelotfabrics.com

COLLECTION  
Pucker Up

## Other Supplies

- 2 buttons in coordinating color
- paper printer
- basic sewing supplies
  - sewing machine with buttonhole foot
  - iron & pressing surface
  - scissors & fabric shears
  - measuring tape
  - fabric marker
  - straight pins
  - needle & coordinating thread

## Notes

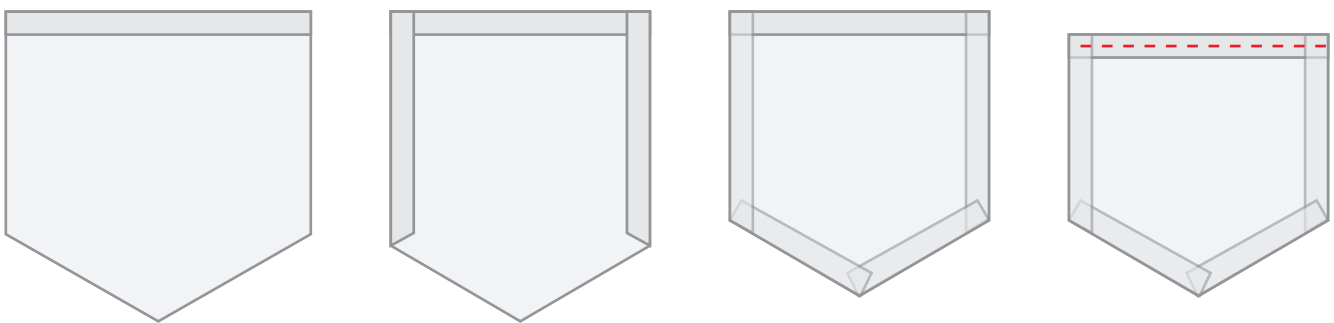
- Please wash, dry & iron your fabric before beginning.
- Unless otherwise noted, sew all seams with a 1/4" seam allowance.
- Arrows on the template indicate the direction of the fabric's grain, from top to bottom.

## Cutting

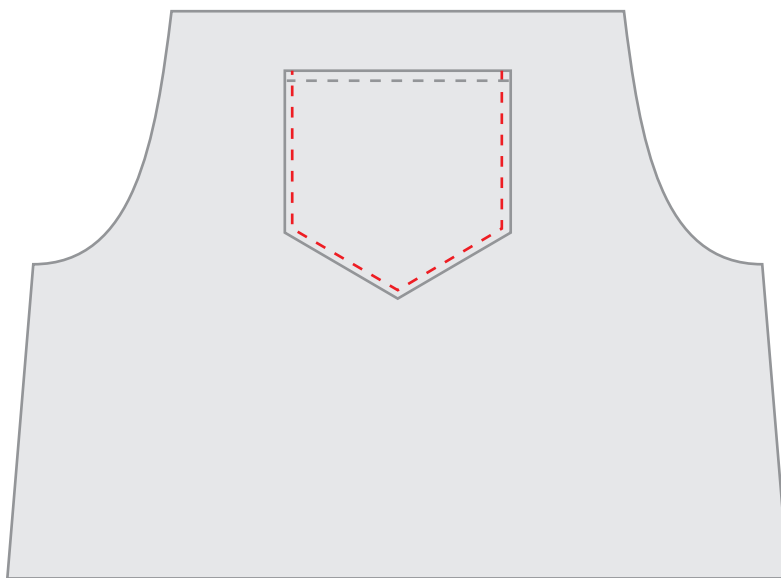
1. Print the Tiny Adventures Dress Template (pp 6-10) at 100% scale and cut out the template pieces. Tape the two halves of the Strap piece together, matching up the triangles.
2. Trace & cut out the dress pieces as indicated on the pattern templates.
3. Trim the selvages from your Skirt fabric and cut (2) rectangles, 30" wide x 8" tall.

## Sewing the Bodice

1. Fold the top edge of the Pocket over by 1/4", Wrong Sides facing, and press the crease. Fold in each side by 1/4" and press, then do the same with the two bottom edges. Fold the top edge over by another 1/4", press and stitch in place.



2. Position the Pocket at the center of the Bodice Front so it is two inches from the Bodice's top edge. Topstitch the Pocket in place with a 1/8" seam allowance around both sides and bottom, leaving the top open. Backstitch at the beginning and end of this seam.



3. Sew the Front & Back Bodice pieces, Right Sides together, at the side seams and press the seam open (Seam #1).

4. Sew the Front & Back Facing pieces, Right Sides, at the side seams and press the seam open (Seam #2).

5. Edge-stitch a line of zig-zag stitching around the inner edge of the Facing to stabilize it, backstitching at the end (Seam #3).

#### Sewing the Straps

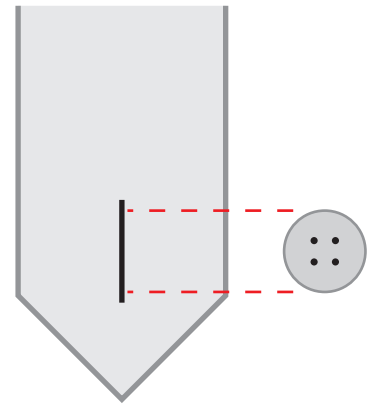
1. Sew each pair of Strap pieces, Right Sides together, around the long sides and pointed ends. Leave the slanted end open. Clip your corners, press the seams open and turn the Straps Right Side out through the open end. A knitting needle or pencil will make this part easier.

2. Lay the Straps flat on your work surface so that the open ends are slanted in opposite directions, as shown.



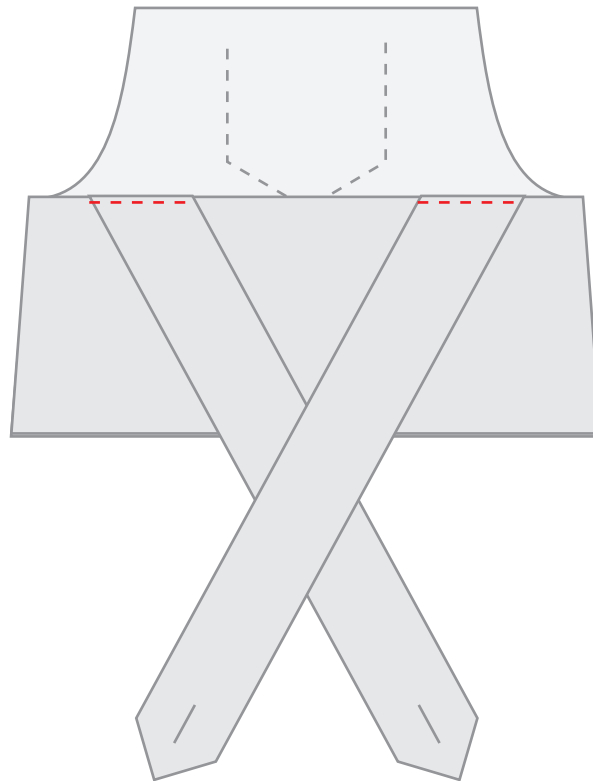
3. Draw a vertical line on the pointed end of each Strap, a tiny bit longer than the diameter of your buttons.

4. Using this line as your guide, sew a buttonhole in each Strap as directed by your sewing machine's user's manual.



### Assembling the Bodice & Straps

1. Place the Front & Back shell unit on your work surface, with the Right Sides outward and the Back piece on top. Position the Straps as shown, two inches inward from the side seams and angling toward the center of the Back. The Right Side of the Straps (ie. Right Side of their buttonholes) should be against the Right Side of the Back. Baste the Straps in place at their short slanted ends.

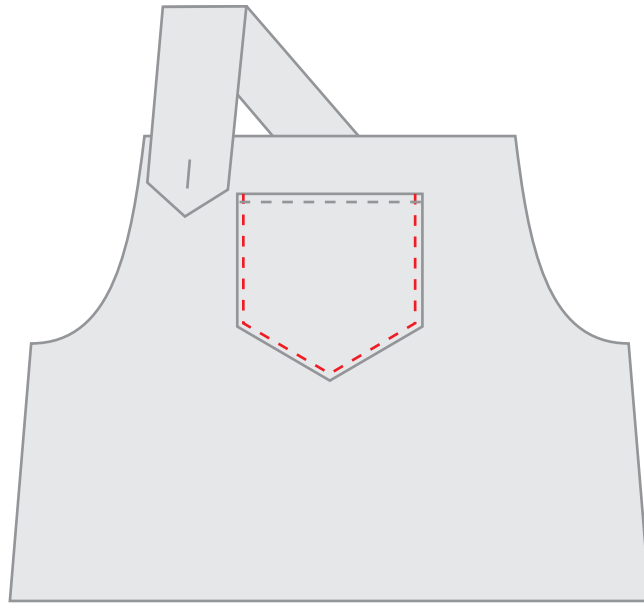


2. Fit the Facings unit over the shell unit, Right Sides together with the Straps sandwiched between them, and pin in place around the top edges. Sew all the way around, backstitching at the end of the seam. Clip your corners, press your seam open and turn the Bodice Right Side out.

3. Press your seam again, using the iron on the Facing side and rolling the seam very slightly toward the inside of the dress.

4. Stitch through both layers directly over the Bodice's side seams - this will keep the Facing neatly inside the Shell.

5. Position the end of one Strap at the top corner of the overalls bib as shown. The Straps criss-cross in the back, so if the Strap is anchored to the left side of the Back, its end should now rest on the right-hand Side of the bib.



6. Mark a dot on the bib through the center of the Strap's buttonhole and sew on one of your buttons. We have a tutorial for sewing buttons [here](#).

7. Repeat Steps 4 & 5 with the second Strap.

### Sewing the Skirt

1. Sew the Skirt pieces together at the short ends, Right Sides together, to make a very wide tube; press the seams open.

2. Sew a rolled hem along one long edge of the Skirt. To do this, first press the edge up by 1/4" all the way around, Wrong Sides together. Fold it over once more so the raw edge is hidden, press again, and stitch the hem in place, backstitching at the end of the seam.

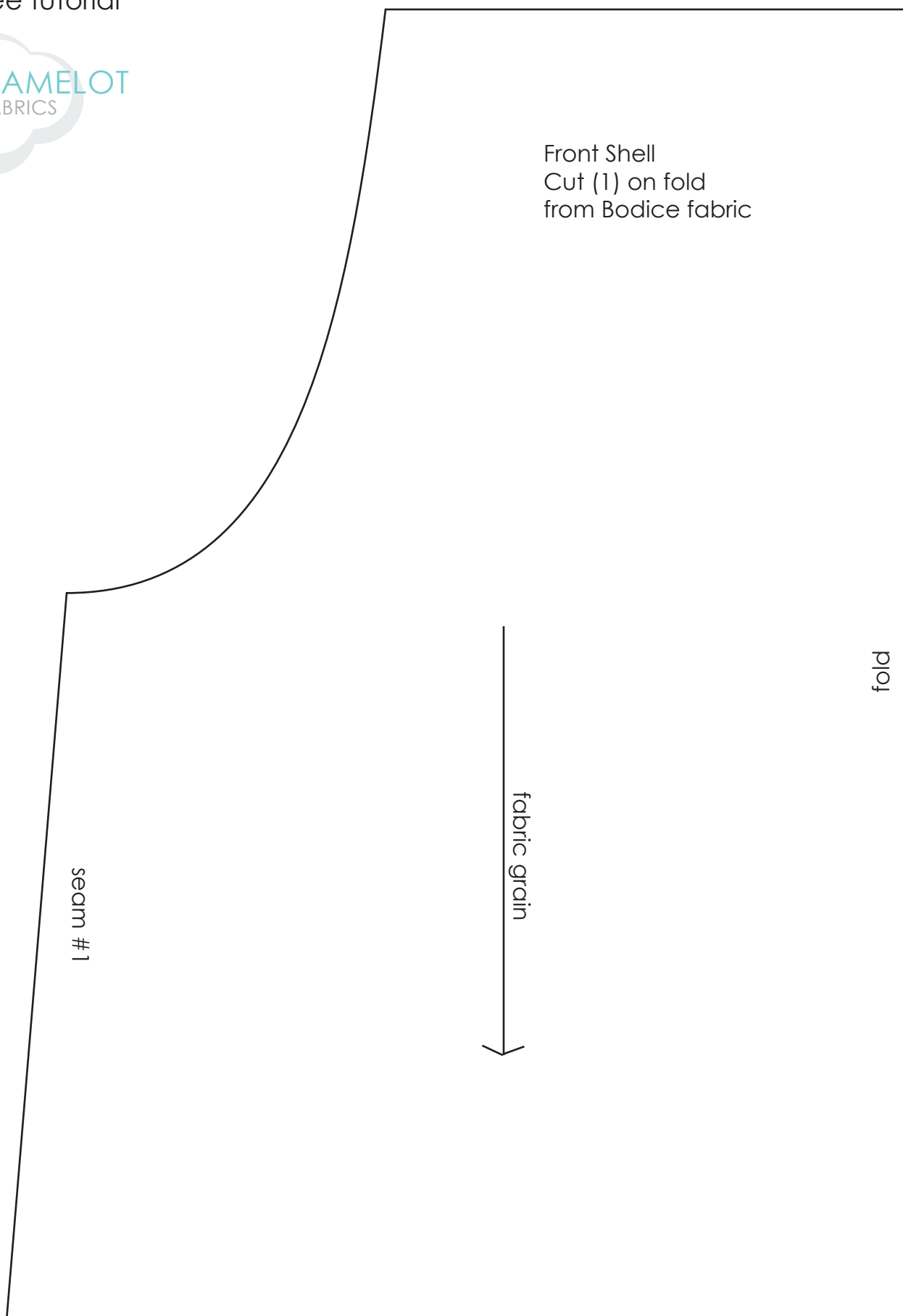
3. Sew a line of basting stitches around the raw edge of the Skirt, but do not backstitch or overlap the ends of this seam. Pull gently on the threads at either end and slide the fabric toward the middle of the seam to gather it. Continue gathering the skirt, working from both ends of the seam, until it is slightly smaller around than the bottom of the Bodice.

4. Pin the Skirt to the Bodice, Right Sides together, easing out the gathering on the Skirt as needed so that it fits the Bodice with equal gathering all the way around. Sew the two units together with a 1/2" seam allowance. Press the seam toward the Skirt to increase its fullness.

6. Slip the dress onto your tiny adventurer over a T-shirt or long-sleeved top.

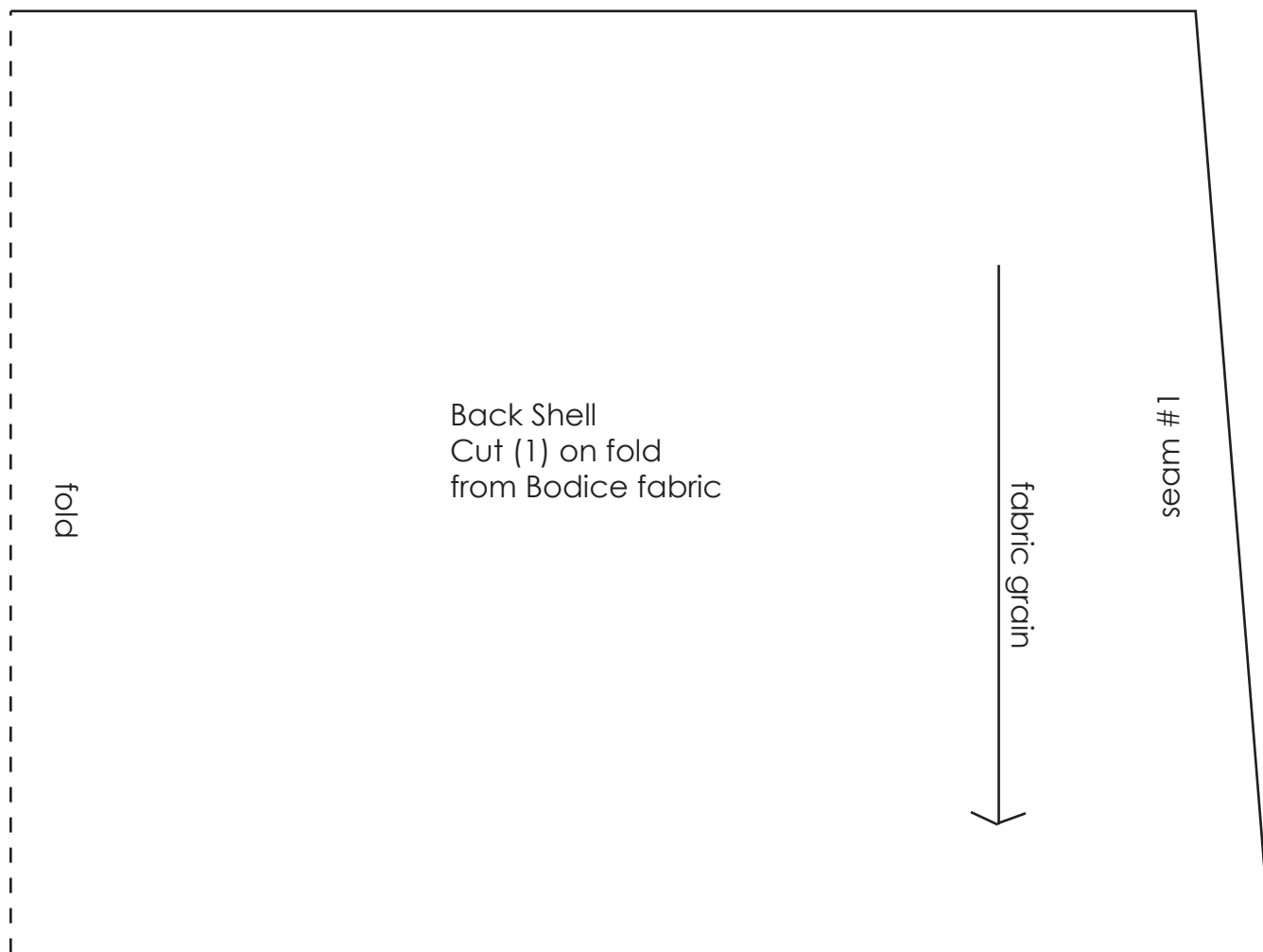
# the Tiny Adventures Dress

a free tutorial



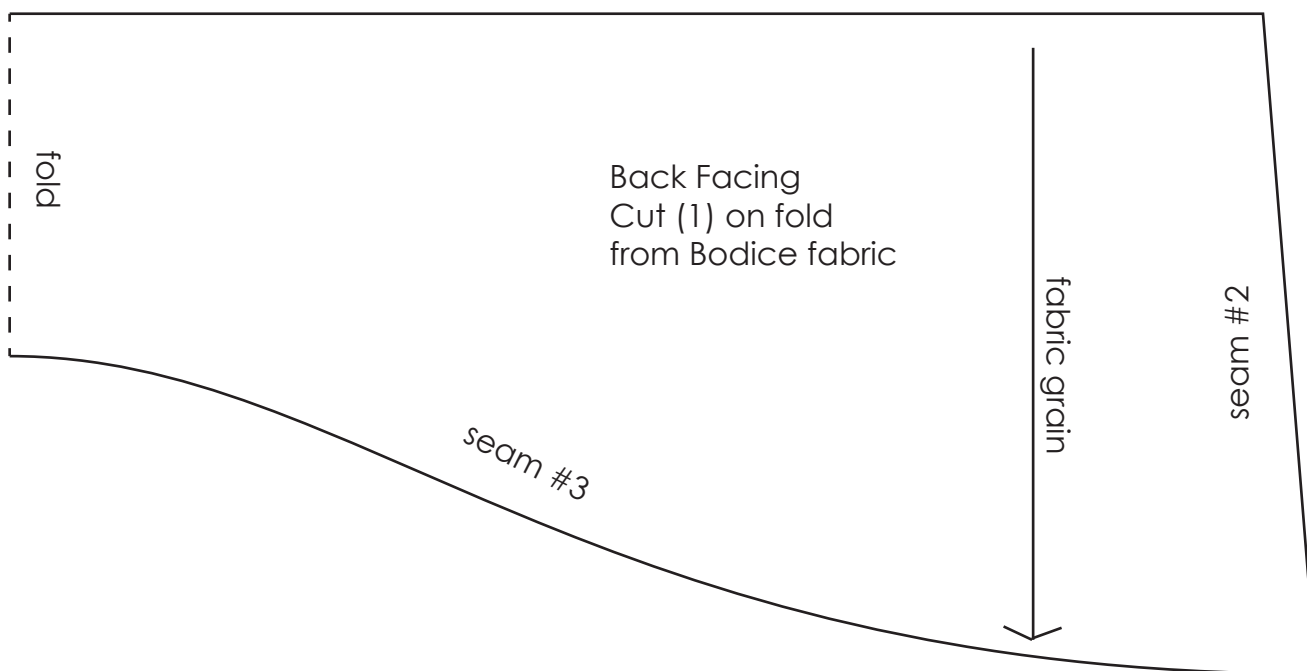
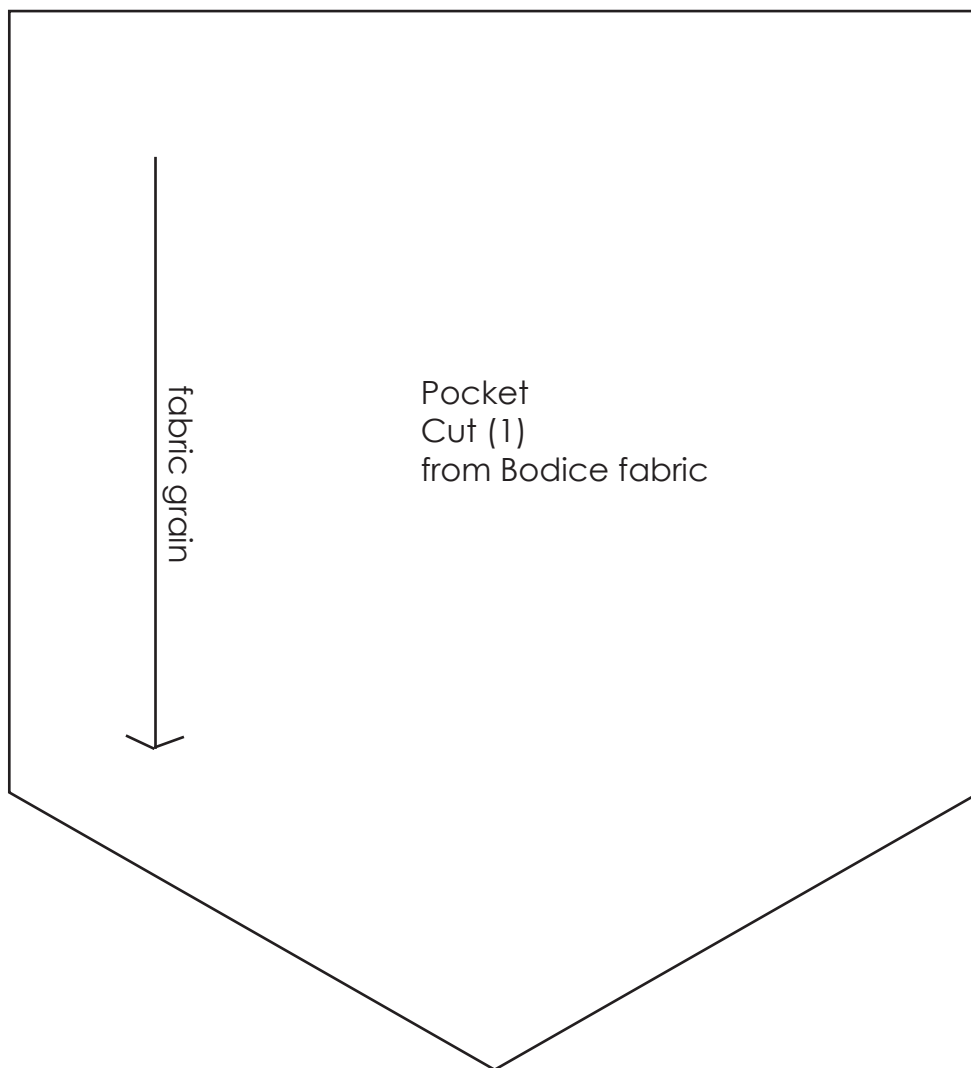
# the Tiny Adventures Dress

a free tutorial



# the Tiny Adventures Dress

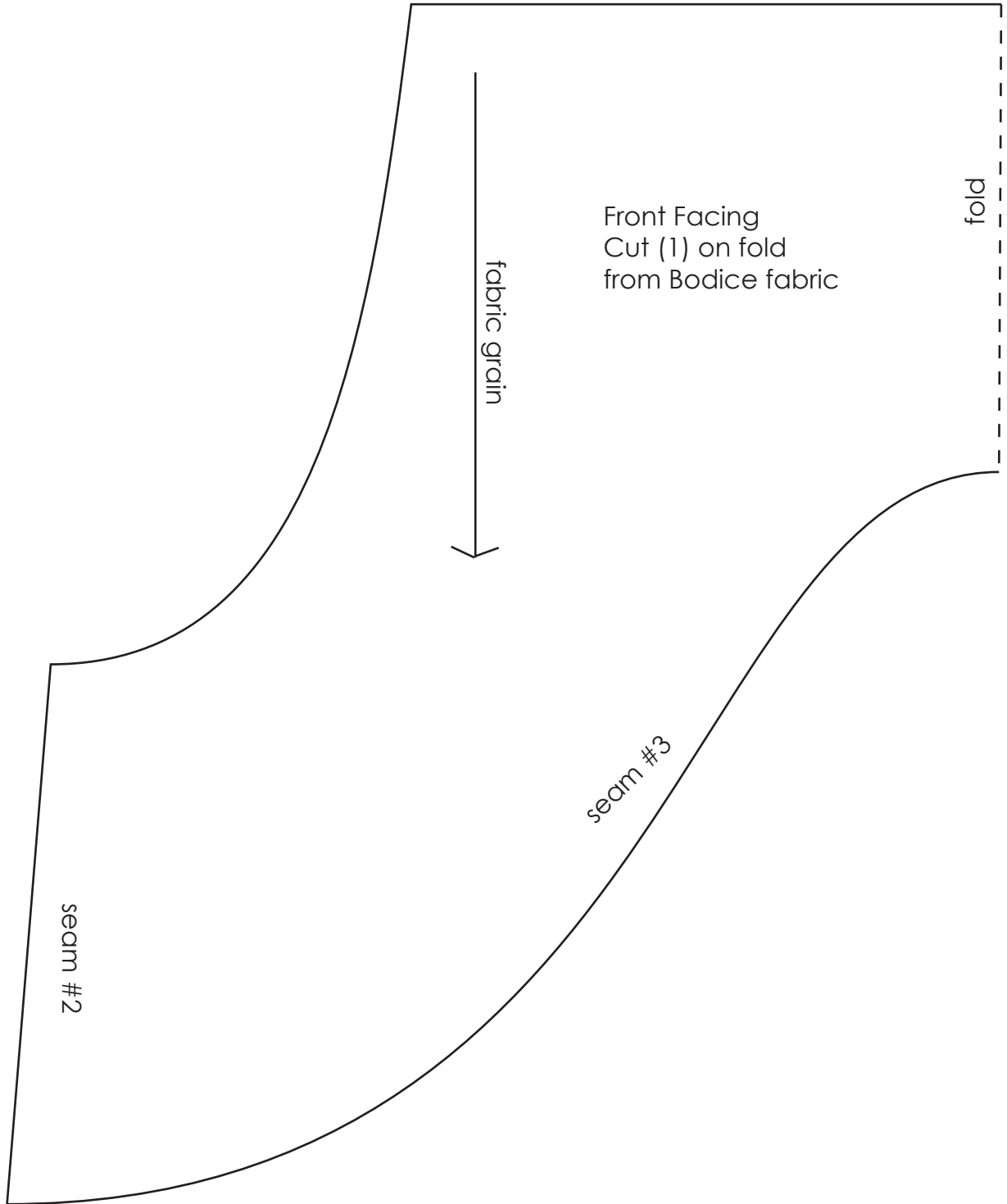
a free tutorial





# the Tiny Adventures Dress

a free tutorial



# the Tiny Adventures Dress

a free tutorial

