

CHOOSE YOUR ADVENTURE



RED DIRT
CYCLE COMPANY

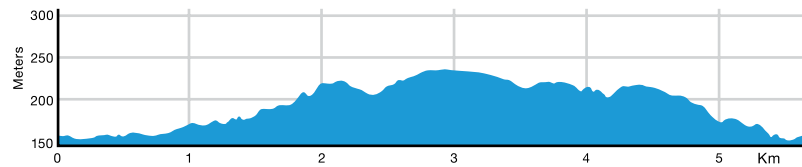
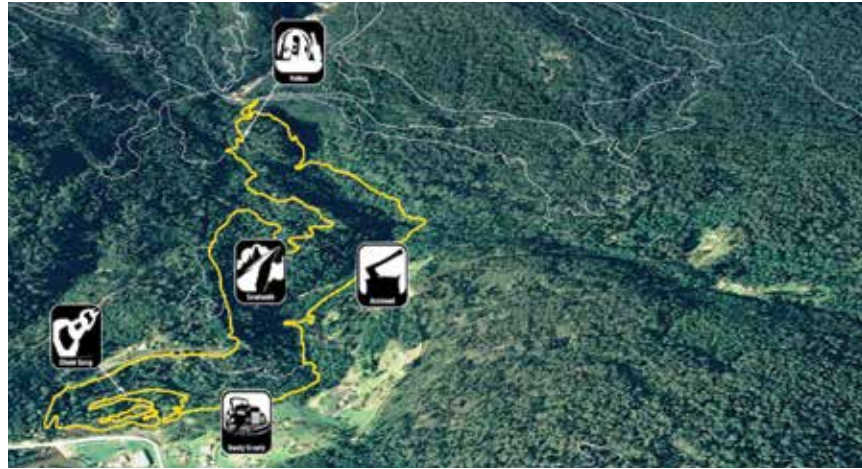


Route 1 | 6.2km | 0.25 - 1.25 hours

Trails Included:
Chain Gang, Rusty Crusty, Axehead,
Relics, Sawtooth



EASY

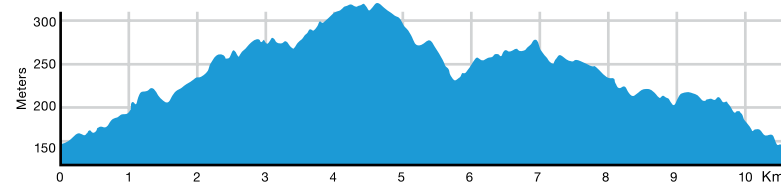


Route 2 | 12km | 1 - 2 hours

Trails Included:
Rusty Crusty, Axehead, Long Shadows, Flickity Sticks,
Howler, Rattler, Sawtooth, Berns & Ferns



MORE
DIFFICULT

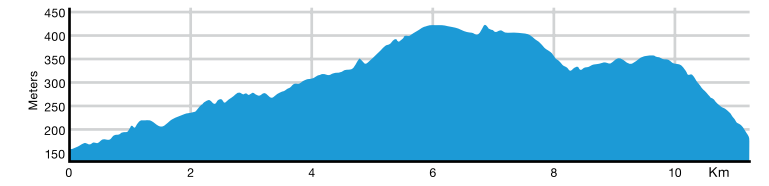


Route 3 | 12.7km | 1 - 2 hours

Trails Included:
Rusty Crusty, Axehead, Long Shadows,
Long Shadows Upper, Return To Sender



MORE
DIFFICULT

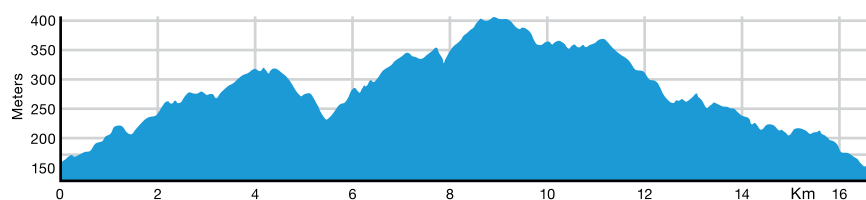
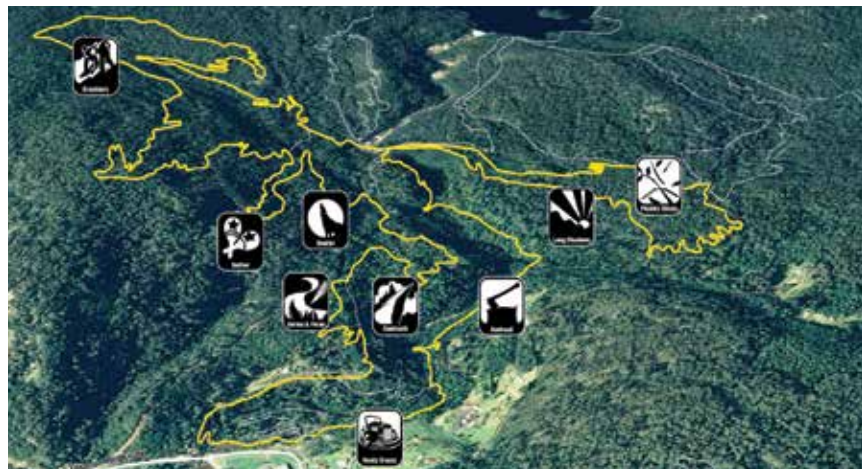


Route 4 | 19.8km | 2 - 4 hours

Trails Included:
Rusty Crusty, Axehead, Long Shadows, Flickity
Sticks, Howler, Krushka's, Rattler, Sawtooth,
Berns & Ferns



MORE
DIFFICULT

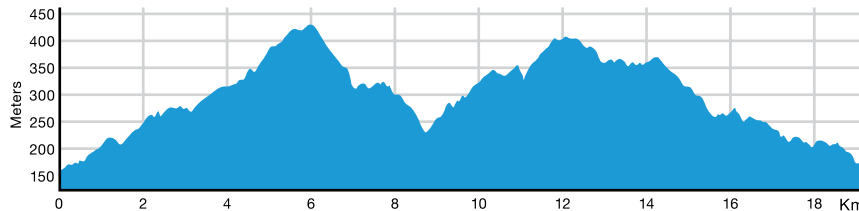


Route 5 | 23.7km | 2.5 - 5 hours

Trails Included:
Rusty Crusty, Axehead, Long Shadows,
Long Shadows Upper, Flickity Sticks Upper,
Flickity Sticks, The Great Race, 23 Stitches, Howler,
Krushka's, Rattler, Sawtooth, Berns & Ferns



VERY
DIFFICULT

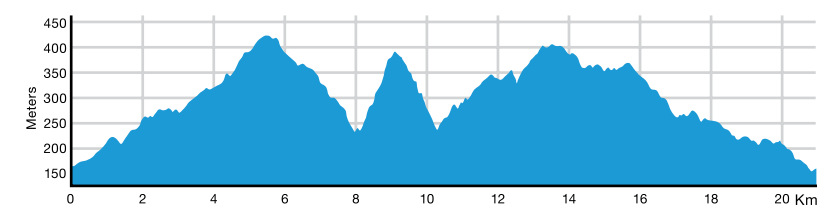


Route 6 | 25.9km | 3 - 5.5 hours


Trails Included:
Rusty Crusty, Axehead, Long Shadows,
Long Shadows Upper, Black Stump, Shear Pin,
23 Stitches, Howler, Black Dragon, Dam Busters,
Krushka's, Rattler, Sawtooth, Berns & Ferns

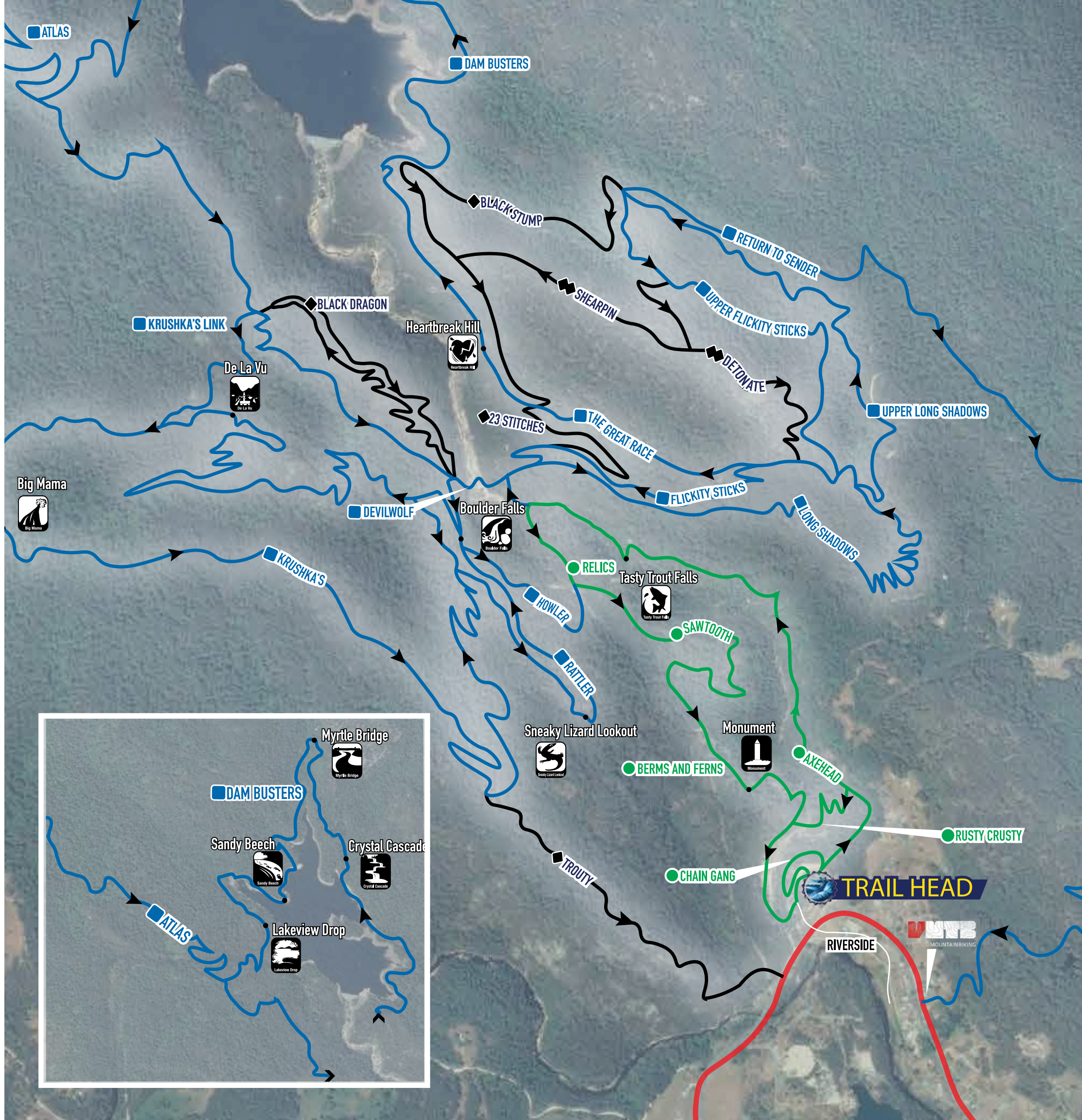


VERY
DIFFICULT



TRAILS

-  Riverside ●
-  Chain Gang ●
-  Axehead ●
-  Relics ●
-  Rusty Crusty ●
-  Sawtooth ●
-  Berms and Ferns ■
-  Rattler ■
-  Howler ■
-  Long Shadows ■
-  Flickity Sticks ■
-  Krushka's ■
-  Krushka's Link ■
-  The Great Race ■
-  Dam Busters ■
-  Atlas ■
-  Return To Sender ■
-  Black Dragon ◆
-  Trouty ◆
-  Detonate ◆◆
-  23 Stitches ◆◆
-  Shearpin ◆◆◆
-  Black Stump ◆◆◆



 ridebluederby.com.au

 @bluederby

 /bluederby



SEAPORT HOTEL
LAUNCESTON

