



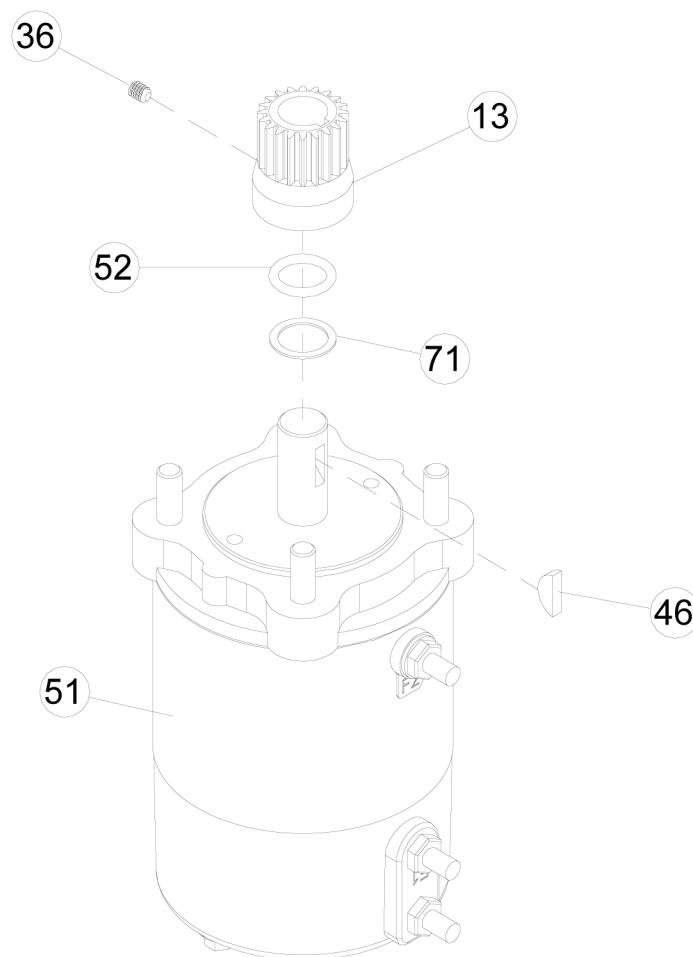
E-Z ANCHOR PULLER MFG.CO.
America's Anchor Winch Since 1990



CLASSIC Series Anchor Puller Replacement Motor Pre – Install Steps

MODELS: EZ-800 / EZ-1000 / EZ-1200 / EZ-1500 / EZ-1700 / EZ-2100

1. Set motor (item #51) up vertically. Place fiber washer (item #71) and well-oiled O-ring (item #52) over end of motor shaft and down to the bottom of the shaft.
2. Insert the key (item #46) into the motor shaft keyway. Slide the pinion gear (item #13) over the shaft and key. Use a hammer and a 7/8" I.D. tube to drive the pinion gear down until it stops. While driving the pinion gear down, the O-ring (item #52) should also be seated in the groove in the bottom of the pinion gear.
3. Insert the setscrew (item #36) into the hole in the side of the pinion gear and tighten securely to prevent the pinion gear from moving on the motor shaft.



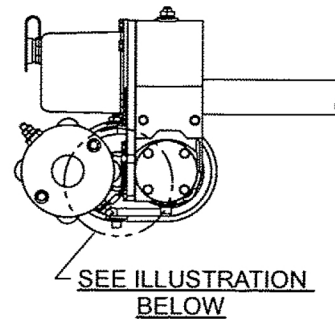
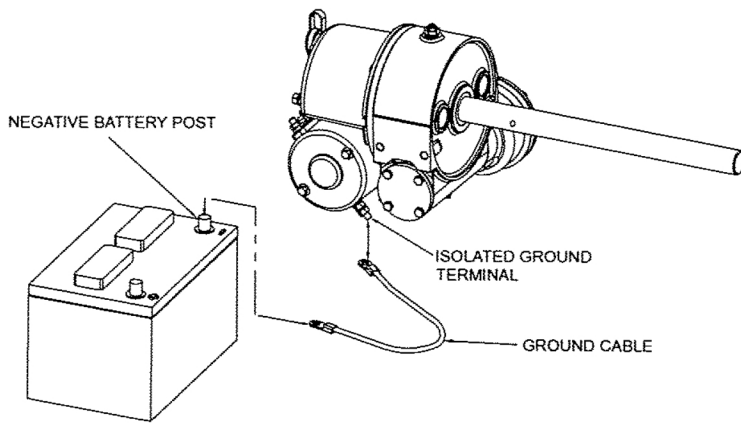


CLASSIC Series Anchor Puller Replacement Motor ISOLATED GROUND Install Steps

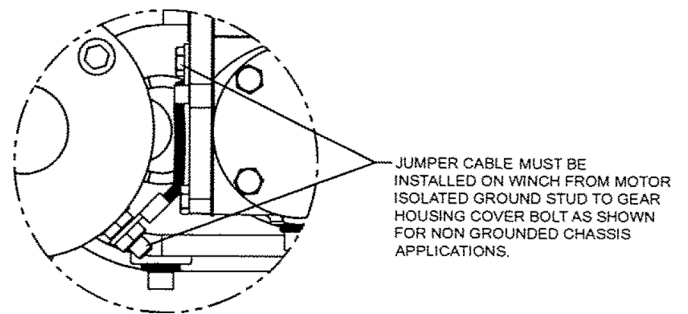
MODELS: EZ-800 / EZ-1000 / EZ-1200 / EZ-1500 / EZ-1700 / EZ-2100

IMPORTANT: hold inner nut on stud with a wrench while tightening outer nut. Using a ground cable with appropriate end terminals, connect the negative(-) battery terminal to the motor isolated ground terminal. A jumper wire will be required between the winch and the motor ground. This ground is required to insure a sufficient ground to operate the solenoid assembly (see diagram below).

WINCH WILL NOT OPERATE UNLESS
GROUND CABLE IS INSTALLED FROM THE
ISOLATED GROUND TERMINAL TO THE
NEGATIVE BATTERY POST.
(SEE DIAGRAM BELOW)



SEE ILLUSTRATION
BELOW



JUMPER CABLE MUST BE
INSTALLED ON WINCH FROM MOTOR
ISOLATED GROUND STUD TO GEAR
HOUSING COVER BOLT AS SHOWN
FOR NON GROUNDED CHASSIS
APPLICATIONS.

Isolated Motor Ground

A jumper wire is required to ground
the solenoid assembly.