



E-Z ANCHOR PULLER MFG. CO.
America's Anchor Winch Since 1990

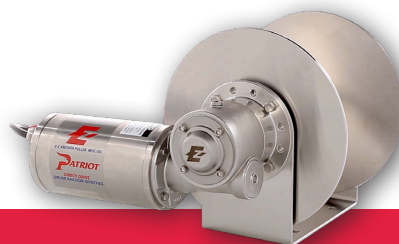
30 YEARS
ANNIVERSARY



HERO

PATRIOT

REBEL



For Pricing & To Order Online Visit www.ezanchorpuller.com

© E-Z Anchor Puller Mfg Co.

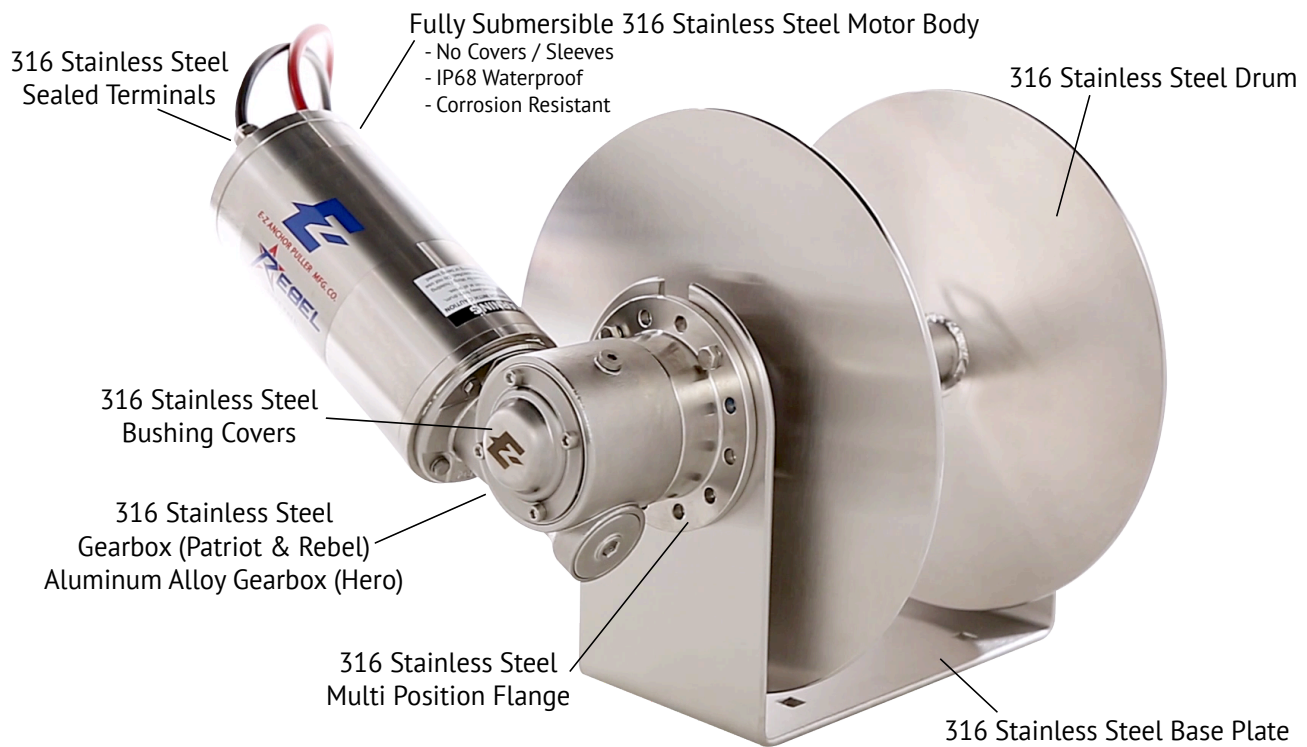
Questions & Orders Toll Free: (800) 800-1640

HERO, PATRIOT or REBEL?

Discover Which Winch is Best for Your Boating Needs:

The **size of your boat** and the **diameter** and **length** of rope and/or chain you want to have on your drum anchor winch are the three key factors that determine which winch is the best for your boat! Standard maritime practices factor in anchor rode scopes that are 3 times the depth of the water you are boating in: keep this and your boating environment in mind when selecting your winch!

Why should I use an E-Z Anchor Puller and not a typical windlass?
HANDS-FREE, CLEAT-FREE, NOTHING TO JAM!



All Winches Include:

- Electronics & Mounting Hardware Package
 - Forward & Reversing Waterproof Solenoid
 - Momentary Rocker Switch
 - Waterproof Circuit Breaker
 - Stainless Steel Nuts, Bolts & Washers
- 1/4" Aluminum Backing Plate



WHICH ANCHOR WINCH DO I CHOOSE?



Our Direct Drive Transmission Series!

Power up/power down direct drive drum anchor winches deploy and retrieve rope and chain at an average of 100 feet per minute. Perfect for pontooning in freshwater lakes and rivers or sportfishing in shallow coastal saltwater environments, the reverse load inefficiency of the worm gear with 45 teeth or more performs as a mechanical brake, preventing the anchor line from free spooling.

Perfect for boats between 18' and 30', pair the Hero EX-1 or Ex-2 with our patent-pending Pontoon Anchoring Solution, or use the Electronic Fast Fall System with our Patriot series to double the deployment speeds of your anchoring kit!



"If You're Anchoring Deep, Its Gotta Have Free Fall!"

The Rebel series has a clutch and friction plate design that allows the drum winch to free fall when the clutch plate is disengaged. A two second push of the rocker switch rotates the clutch plate, releasing your anchor line and dropping your anchor to the bottom at the fastest drop speeds possible!

Once your anchor line is fully deployed, press the raise button for five seconds to engage the clutch plate and lock-in your position on the water.

An internal spring around the drive shaft applies constant pressure against the braking plate, preventing backlash once the anchor hits the bottom, while an internal frame stiffener within the drum shaft connects both upper sides of the baseplate, increasing winch strength and preventing high torque wobble.



Suggested Boat Length

Series	Model #	18' - 21'		21' - 24'		24' - 27'			27' - 35'			35' - 45'		45' - 55'	
		1/4" Line	1/4" Chain	5/16" Line	1/4" Chain	3/8" Line	1/4" Chain	5/16" Chain	1/2" line	1/4" Chain	5/16" Chain	5/8" Line	5/16" Chain	3/4" Line	3/8" Chain
HERO	EX-1	250'	10'	175'	10'	125'	10'								
HERO	EX-2	375'	10'	225'	10'	175'	10'		125'	10'					
HERO	EX-3	550'	10'	350'	10'	250'	10'		150'	10'					
PATRIOT	EZ-1	375'	10'	225'	10'	175'	10'		125'	10'					
PATRIOT	EZ-2	550'	10'	350'	10'	250'	10'		150'	10'					
PATRIOT	EZ-3	725'	10'	500'	10'	325'	10'		200'		10'				
REBEL	EZ-4	975'	10'	600'	10'	400'		10'	275'		10'	150'	20'	100'	20'
REBEL	EZ-5	1750'	10'	1100'	10'	800'		10'	425'		20'	275'	20'	175'	20'
REBEL	EZ-6	3000'	10'	1950'	10'	1350'		10'	800'		20'	500'	20'	350'	20'

For Boats 18' - 27'

Direct Drive - Power Down and Power Up

Aluminum Powder Coated Gearbox and Motor



- Freshwater Lakes and Rivers
- Optional Pontoon & Tritoon Anchoring System

Model	EX-1	EX-2	EX-3
Metal Type	Aluminum Alloy	Aluminum Alloy	Aluminum Alloy
Boat Length	18'-21' / 6m-7m	18'-21' / 6m-7m	21'-24' / 7m-8m
Spool Size	7" L x 8" Dia. (180mm x 200mm)	8" L x 9.5" Dia. (200mm x 240mm)	8" L x 11" Dia. (200mm x 280mm)
Power Supply (DC)	12v	12v	12v
Circuit Breaker	40 Amp	60 Amp	60 Amp
Motor (Watts)	480w	720w	720w
Motor Size Dia.	75mm	90mm	90mm
Gearbox Size	30AA	44AA	44AA
Max Pulling Load	1,000 lb / 454 kg	1,250 lb / 567 kg	1,250 lb / 567 kg
Max Recc. Work Load	160 lb / 73 kg	200 lb / 91 kg	200 lb / 91 kg
Net Weight	20 lb / 9 kg	33 lb / 15 kg	35 lb / 16 kg
Gross Weight	26 lb / 12 kg	42 lb / 19 kg	44 lb / 20 kg

ROPE SUGGESTIONS:

- 250' (76m) of 1/4" (6mm) Double Braid Nylon
- 250' (76m) of 5/16" (8mm) Double Braid Nylon

OPTIONAL ACCESSORIES:

Retractable Pontoon & Tritoon Anchoring Solution

The ideal out of sight, below deck anchoring solution for any Pontoon Or Tritoon 18'(6m) - 30'(10m)



For Boats 18' - 30'

Direct Drive - Power Down and Power Up

316 Stainless Steel Gearbox and Motor



- Shallow Coastal Saltwater
- Optional Electronic Fast Fall System

Model	EZ-1	EZ-2	EZ-3
Metal Type	316 Stainless Steel	316 Stainless Steel	316 Stainless Steel
Boat Length	18'-21' / 6m-7m	21'-24' / 7m-8m	24'-27' / 8m-9m
Spool Size	8" L x 9.5" Dia. (200mm x 240mm)	8" L x 11" Dia. (200mm x 280mm)	9" L x 12" Dia. (230mm x 350mm)
Power Supply (DC)	12v	12v	12v
Circuit Breaker	60 Amp	80 Amp	100 Amp
Motor (Watts)	720w	960w	1200w
Motor Size Dia.	90mm	110mm	110mm
Gearbox Size	40SS	40SS	40SS
Max Pulling Load	1,250 lb / 567 kg	1,600 lb / 725 kg	1,850 lb / 840 kg
Max Recc. Work Load	200 lb / 91 kg	256 lb / 117 kg	295 lb / 133 kg
Net Weight	42 lb / 19 kg	51 lb / 23 kg	64 lb / 29 kg
Gross Weight	51 lb / 23 kg	59 lb / 27 kg	75 lb / 34 kg

ROPE SUGGESTIONS:

- 250' (76m) of 3/8" (10mm) Double Braid Nylon
- 400' (121m) of 1/4" (6mm) UHMWPE
- 25' (8m) of 1/4" (6mm) Galvanized Chain

OPTIONAL ACCESSORIES:

Electronic Fast Fall System

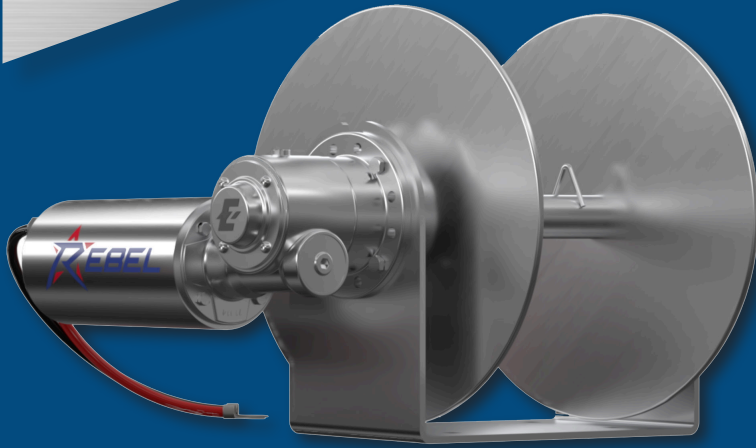
This clutch-free system doubles your anchor drop speeds. It can be retrofitted at any time and turned on or off according to your in-the-moment needs.



For Boats 27' - 55'

Free Fall - Auto
Down and Power Up

316 Stainless Steel
Gearbox and
Motor



- Deep Coastal Saltwater
- When Fast Anchor Deployment is Critical
- Optional 24 Volt Motor and Solenoid

Model	EZ-4	EZ-5	EZ-6
Metal Type	316 Stainless Steel	316 Stainless Steel	316 Stainless Steel
Boat Length	27'-35' / 8m-11m	35'-45' / 11m-14m	45'-55' / 14m-17m
Spool Size	9" L x 14" Dia. (230mm x 355mm)	11" L x 16" Dia. (280mm x 405mm)	14" L x 18" Dia. (355mm x 455mm)
Power Supply (DC)	12v	12v	12v
Circuit Breaker	100 Amp	120 Amp	120 Amp
Motor (Watts)	1200w	1500w	1500w
Motor Size Dia.	110mm	130mm	130mm
Gearbox Size	40SS	63SS	63SS
Max Pulling Load	1,850 lb / 840 kg	2,000 lb / 907 kg	2,000 lb / 907 kg
Max Recc. Work Load	295 lb / 133 kg	320 lb / 145 kg	320 lb / 145 kg
Net Weight	75 lb / 34 kg	108 lb / 49 kg	121 lb / 55 kg
Gross Weight	88 lb / 40 kg	123 lb / 56 kg	141 lb / 64 kg

ROPE SUGGESTIONS:

- 250' (76m) of 1/2" (12mm) Double Braid Nylon
- 500' (152m) of 5/8" (14mm) Double Braid Nylon
- 600' (182m) of 1/4" (6mm) UHMWPE
- 500' (152m) of 5/16" (8mm) UHMWPE
- 1000' (304m) of 5/16" (8mm) UHMWPE
- 25' (8m) of 1/4" (6mm) Galvanized Chain
- 25' (8m) of 5/16" (8mm) Galvanized Chain



CUSTOMIZE YOUR WINCH TO PERFECTLY FIT YOUR LIFESTYLE!

Here are just a few of the winch accessories that we offer, to see our entire collection, visit our website at www.ezanchorpuller.com

Retractable Pontoon Anchoring Solution

Pair this with our Hero Series to create the ideal out of sight, below deck anchoring solution



Guide Roller

Available in both small and large sizes, our guide rollers are specifically designed to pair perfectly with any winch. Reduce rope chafe and allow for even alignment and free falling with these 316 stainless steel accessories.



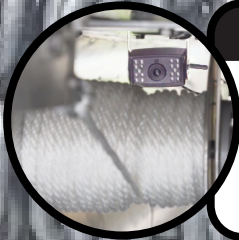
Bowsprit

Available in both small and large sizes, our swivel and straight style Bowsprits are adaptable to any boat up to 45'. These self launching designs ensure almost every anchor drops freely and self rights the anchor upon retrieval.



Waterproof Wi-Fi Camera

With our waterproof wifi camera kit, you can watch your winch work from your smartphone. Have a clear view of deployment and retrieval, regardless of where it is installed on your boat.



Electronic Fast Fall System

Compatible with Hero and Patriot Direct Drive Series, this clutch-free system doubles your anchor drop speeds. It can be retrofitted at any time and turned on or off according to your in-the-moment needs.



Shear Magic Anchor

Our unique style features the plow design you've known to love, giving you the great holding power of a traditional anchor with the added benefit of a break away shear pin. Retrieve your anchor when reef'd thanks to the breakable shear pin designs.



Wireless Remote Control

Long-Range signal allows you to control the winch from anywhere on the boat. Available for 12-volt and 24-volt drum anchor winches.



Support Our Authorized Retailer:



NOW OFFERING ROPE & CHAIN!

Double Braid Nylon Rope

Double braid nylon rope.
Eye spliced with a small stainless steel thimble at both ends.

Length & Rope Diameter	Breaking Strength	SKU #
50' (16m) of 3/8" (10mm)	8000lb.	EZ-0801
50' (16m) of 1/2" (12mm)	8000lb.	EZ-0802
50' (16m) of 5/8" (14mm)	13000lb.	EZ-0803
250' (76m) of 1/4" (6mm)	2000lb.	EZ-0804
250' (76m) of 5/16" (8mm)	3260lb.	EZ-0805
250' (76m) of 3/8" (10mm)	4800lb.	EZ-0806
250' (76m) of 1/2" (12mm)	8000lb.	EZ-0807
500' (152m) of 5/8" (14mm)	13000lb.	EZ-0808

UHMWPE (Spectra/Dyneema) Rope

Ultra high molecular weight polyethylene winch rope.
Eye spliced with a small stainless steel thimble at both ends.

Length & Rope Diameter	Breaking Strength	SKU #
400' (121m) of 1/4" (6mm)	8600lb.	EZ-0809
500' (152m) of 1/4" (6mm)	8600lb.	EZ-0810
600' (182m) of 1/4" (6mm)	8600lb.	EZ-0811
500' (152m) of 5/16" (8mm)	13000lb.	EZ-0812
1000' (304m) of 5/16" (8mm)	13000lb.	EZ-0813

Short Link Chain

DIN766 Hot Dipped Galvanized Short Link Chain

Length & Rope Diameter	SKU #
25' (8m) of 1/4" (6mm)	EZ-0814
25' (8m) of 5/16" (8mm)	EZ-0815

OEM BOAT BUILDERS THAT USE OUR PRODUCTS



Setting Standards for Safer Boating

MEMBER OF



National Marine Manufacturers Association

For Pricing & To Order Online Visit www.ezanchorpuller.com

© E-Z Anchor Puller Mfg Co.

Questions & Orders Toll Free: (800) 800-1640