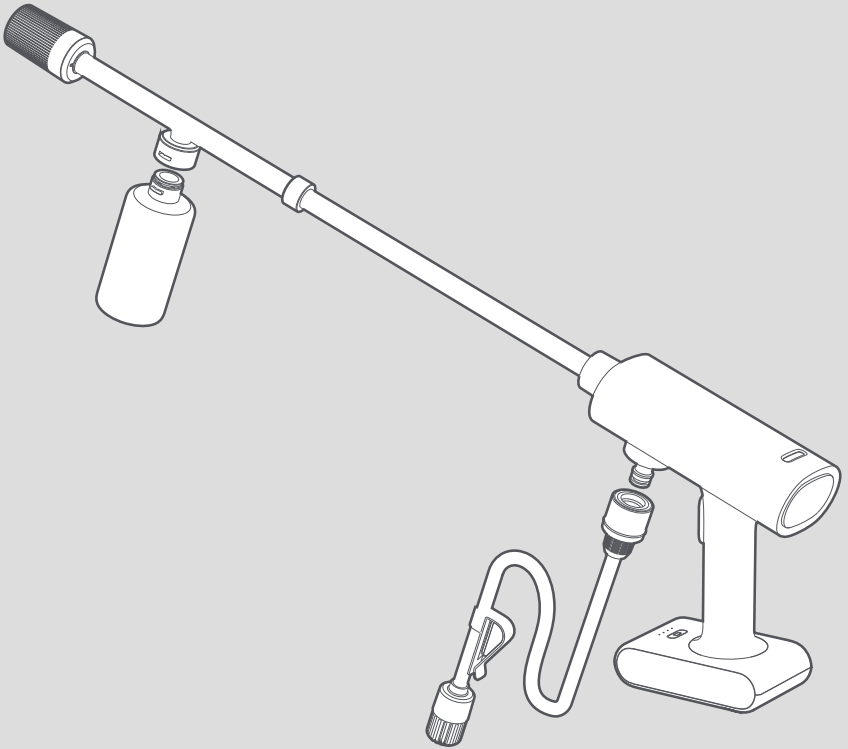


# HOTO 20V Pressure Washer Pro



**Make It  
Happen**



Stay tuned to our social media  
(@hoto\_official)

**WARNING!**

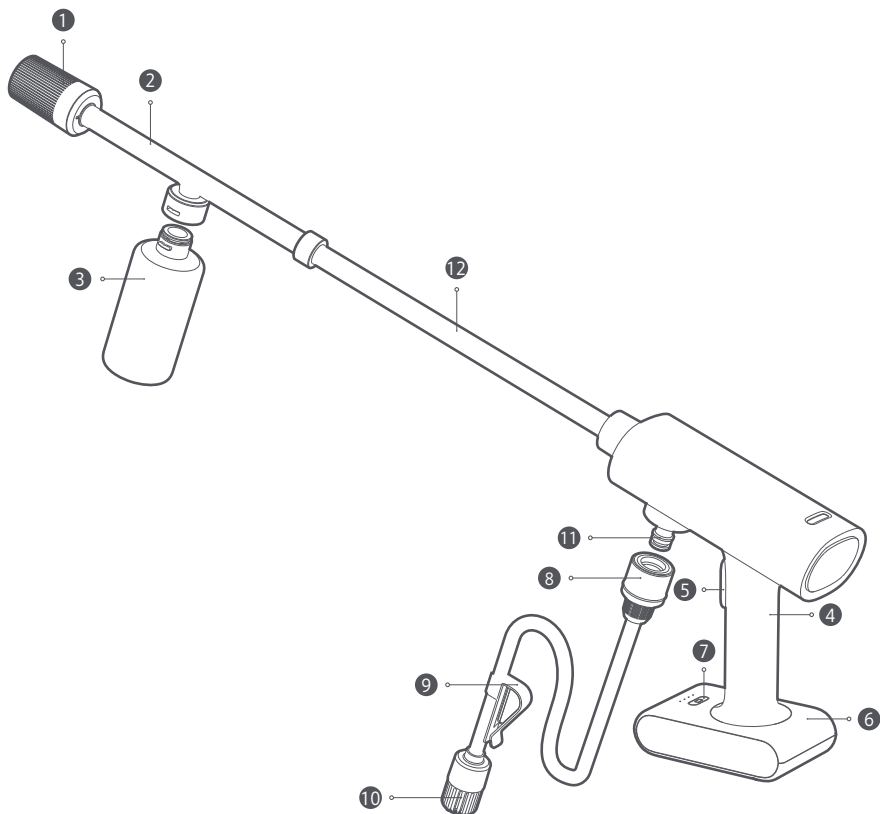
You must read this manual thoroughly  
before using HOTO 20V Pressure Washer Pro!

# 01 Product Overview

---

Thank you for using HOTO 20V Pressure Washer Pro.

Read this manual carefully before use, and retain it for future reference.



1 Multi-Function Nozzle

4 Handle

7 Battery Level  
Display Button

10 Water Inlet Filter

2 Spray Lance

5 Trigger

8 Hose Inlet

11 Water Inlet

3 Soap Holder

6 Battery Pack

9 Hose Clip

12 Connecting rod

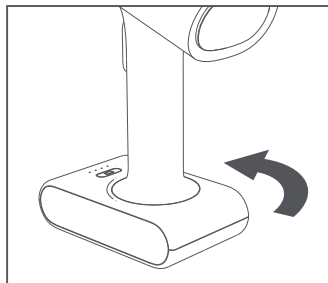
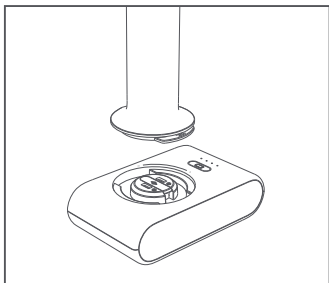
# 02 Operating Instructions

---

## Component assembly

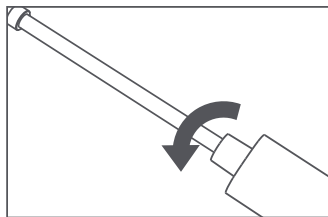
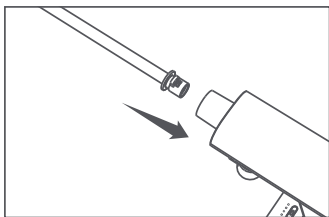
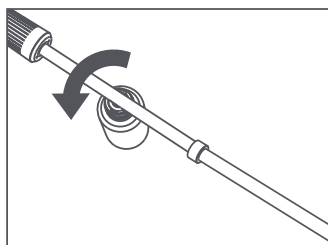
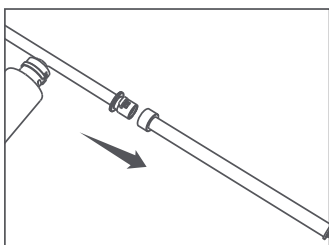
Install the battery pack:

- Align the "●" mark on the handle with the "Ⓔ" mark on battery pack.
- Rotate battery pack 90 degrees in the arrow direction so that the "●" mark is aligned with the "Ⓔ" mark. There will be a sound of locking for successful assembly.



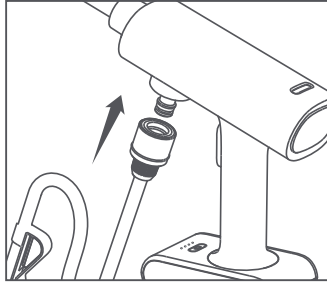
Assembly of the spray lance and Connecting rod:

- Align the reducer of the spray lance with the internal hook groove of the Connecting rod;
- Rotate the rod 90 degrees in the arrow direction so that the spray lance restores;
- Align the Connecting rod with the internal hook groove of the main body handle;
- Rotate the rod 90 degrees in the arrow direction so that the Connecting rod restores.



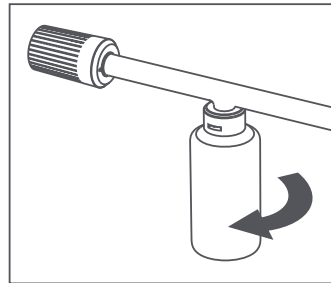
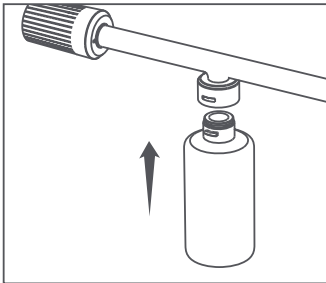
Connection of the hose inlet:

Plug hose inlet into water inlet as shown.



Assembly of the soap holder:

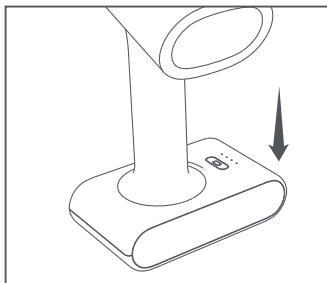
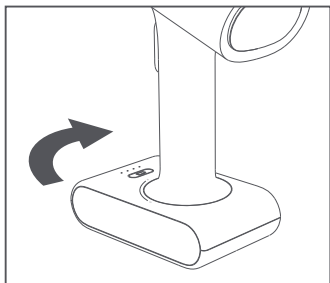
- Align soap holder with the slot in spray lance in the arrow direction.
- Rotate it about 45 degrees in the arrow direction to lock soap holder.



## Disassembly of components

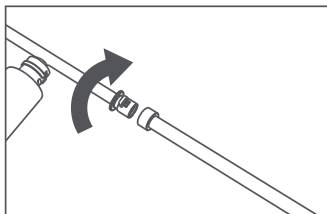
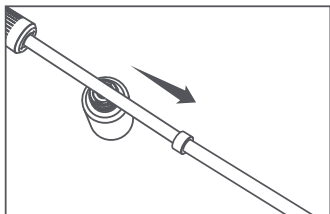
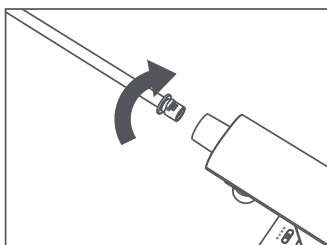
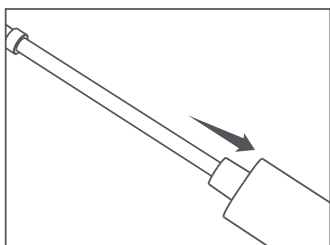
Disassembly of the battery pack:

- Rotate battery pack 90 degrees in the arrow direction so that the "●" mark is aligned with the "Ⓔ" mark;
- Remove battery pack downward.



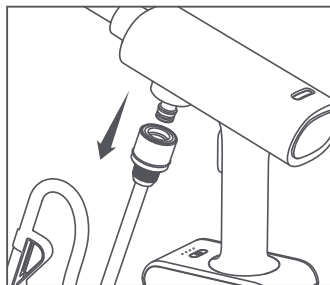
Disassembly of the spray lance and the Connecting rod:

- Press and push backward the Connecting rod in the arrow direction, and then rotate the Connecting rod 90 degrees in the arrow direction and draw it out;
- Press and push backward the spray lance in the arrow direction, and then rotate the spray lance 90 degrees in the arrow direction and draw it out.



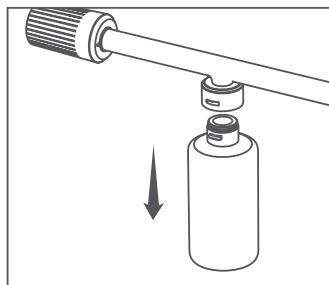
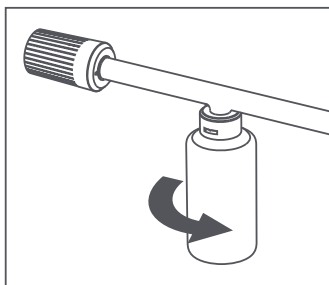
#### Disassembly of the hose inlet:

Hold hose inlet at its largest diameter position in the upper part, and then pull it out downward.



#### Disassembly of the soap holder:

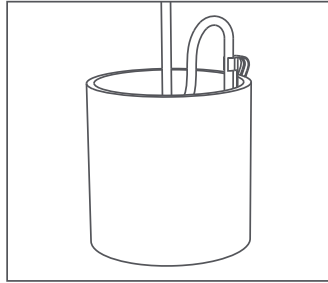
- Rotate soap holder 45 degrees in the arrow direction.
- Remove soap holder in the arrow direction.





## How to use



- Connect the water pipe: Put hose inlet into a bucket and fix it to the edge of the bucket with hose clip. Connect water inlet filter.





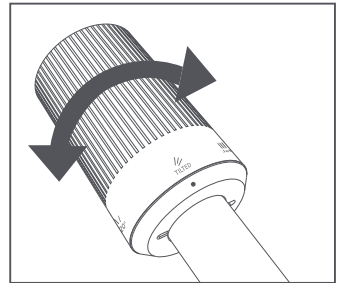
- Change the water type: Rotate the shell of multifunctional nozzle to align the arrow "●" with the corresponding mark on the shell to change the water type. Five water types are available circularly.

" Jet " Jet mode: It is used to rinse stubborn stains, such as dry stains on the car's surface.

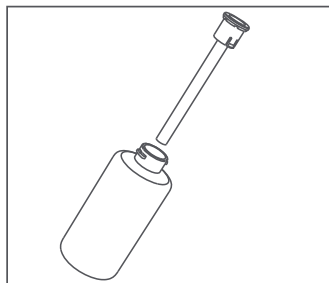
" TILTED " : Tilted mode: It is used to clean the top of the car and other higher planes.

" 20° " / " 40° " : 20-degree/40-degree water mode: The two modes are all used for routine cleaning purposes, such as washing cars, bicycles, motorcycles, windows, or fences, and only have differences in water spray angles.

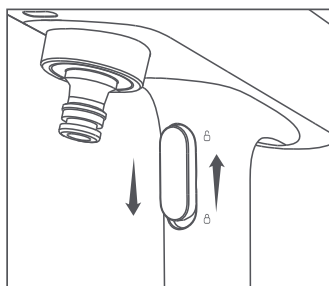
" |  " : Foam/Shower mode: The washer working in this mode can spray foam when there is soap in the soap holder, or can be used as a shower when there is no soap.



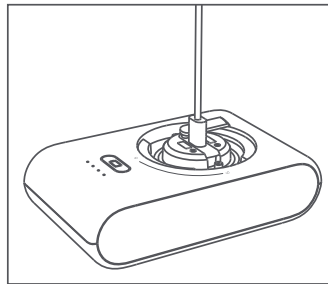
- Add detergent: Remove soap holder, add detergent or car washing liquid (powder), and then close the soap holder.



- Self-lock the start button: Switch trigger down to the "0" mark to self-lock the button (so that the motor will not work if trigger is pressed). Restore trigger to the "0" mark to lift self-lock.



- **Battery pack:** The Type-C interface of the battery pack supports the two-way fast charge with an output of 40 W MAX Type-C. The Type-C port supports the fast charging input of 40W MAX. The Type-C port supports the fast charge output of 40 W MAX, thus providing the fast charging experience in a more efficient manner.
- **Charge the battery pack:** Remove the waterproof cover over the charge port of the battery pack, and connect the Type-C connector of the charger cable to the charge port of the battery pack and the other end of the cable to power supply.
- **Discharge the battery pack:** This product can be discharged through Type-C. You may purchase a two-way Type-C charger cable separately (or Apple charging cable with one end of Type C). Plug one end of the Type-C interface of the charger cable into the Type-C interface of the battery pack and the other end of the Type-C interface of the charger cable into the equipment that supports the Type-C interface.



## Checking the Battery Level During Use

- **Battery level 75%–100%:** Press the battery level display button, the four indicators will remain on for 10 seconds and then go off.
- **Battery level 50%–75%:** Press the battery level display button, and three of the four indicators will remain on for 10 seconds and then go off.
- **Battery level 25%–50%:** Press the battery level display button, and two of the four indicators will remain on for 10 seconds and then go off.
- **Battery level 0%–25%:** Press the battery level display button, and one of the four indicators will remain on for 10 seconds and then go off.

## During Charging

- Battery level 100%: Press the battery level display button, and four indicators will remain on for 20 seconds and then go off.
- Battery level 100%: The total four indicators remain on for 20 seconds and then go off.
- Battery level 75%–100%: Indicators 1, 2, and 3 remain on, and indicator 4 blinks.
- Battery level 50%–75%: Indicators 1, and 2 remain on, and indicator 3 blinks.
- Battery level 25%–50%: Indicator 1 remains on, and indicator 2 blinks.
- Battery level 0%–25%: Indicator 1 blinks.

# 03 Safety Precautions

---

## Safety Warnings for Washer

- Do not spray water on devices with electrical components.
- Please stop using the washer immediately if there is visible damage or leakage caused by bumping or falling.
- Do not spray water on yourself or others in an attempt to wash clothes, shoes, or socks.
- Disconnect the washer from power before the maintenance.
- High-pressure hoses and connectors are critical to the washer. Use only the accessories like hoses and connectors provided or approved by the manufacturer to ensure the safety of the washer.
- Do not use the washer if the power cord or key components like the hose and soap holder are damaged, or the safety function malfunctions.
- To avoid personal injury, please pay extra attention to the children around when using the washer.
- Familiarize yourself with the control parts of the washer, and depressurize or stop the washer as soon as possible if needed.
- Always keep yourself alert when using the washer in a cleaning task.
- Do not operate the washer when you are fatigued, or after drinking alcohol or using medications that may compromise your consciousness.
- Make sure that there is no unnecessary personnel in the area where you are using the washer.
- Do not place the washer on an unstable stand. Keep the washer stable and balanced at all times.
- Strictly abide by the maintenance instructions specified in the user manual, and do not disassemble the washer on your own.

## Safety Warnings for Battery Pack

- Do not open or shred the battery pack.
- Do not expose the battery pack to heat or flames. Keep the battery pack away from direct sunlight.
- Do not short-circuit the battery pack. Do not store the battery pack in a box or drawer without precaution. Store the battery pack separately to avoid short circuits with other battery packs or metal objects.
- Protect the battery pack from mechanical shock.
- In case of accidental battery leakage, do not directly contact the leaked liquid with your skin or eyes. In case of contact, flush with plenty of water.
- Correctly align the positive and negative poles of the battery pack to ensure proper use.
- Do not use battery packs that are not intended for the washer.
- Keep the battery pack away from children.
- Keep the battery pack clean and dry.
- Please use a dry and clean cloth to wipe the battery pack interface.
- Charge the battery pack before use.
- After long-term storage, the battery pack needs to be charged and discharged several times for optimal performance.
- The battery pack is at its best performance when used at room temperature of  $20^{\circ}\text{C} \pm 5^{\circ}\text{C}$ .
- Please keep the washer's original user manual for future reference.
- The battery pack is for its intended use only.
- Disconnect the washer from power before removing the battery pack.

## Note

The washer will be tested to use before leaving the factory to ensure quality. There may be a few water stains inside when unpacking for the first time, which is normal. Please feel free to use it.

## 04 Specifications

---

Model: QWXCJ002

Item Dimensions: 870X450X84mm

Net Weight: Approx. 1.6kg

Rated Input:

5V --- 10W/9V --- 18W/12V --- 24W/

15V --- 30W/20V --- 40W

Battery Type: Lithium-ion battery pack

Typical Capacity: 2500 mAh(18.5V ---)

Rated Capacity: 2400 mAh(18.5V ---)

Typical Energy: 46.25 Wh

Rated Pressure and Flow Rate:

Self-priming Way:

Jet mode/Tilted mode/20-degree/40-degree

Water Mode:

Pressure ( $18 \pm 2$ ) Bar, flow rate ( $160 \pm 20$ ) L/h

Water-Supplying Way:

The outlet water pressure and flow rate will vary along with the inlet water pressure.

Max. Inlet Water Pressure: 0.7 MPa

---

Notes:

Self-priming way: The washer automatically absorbs water through a hose.

Water-supplying way: The washer uses water via a faucet, but the relevant accessories should be purchased separately.

## 05 Care & Maintenance

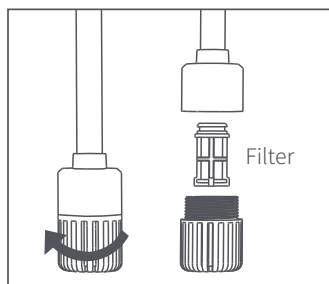
---

**Please disassemble the relevant components from the washer before performing the maintenance.**

Please check whether the washer and components are damaged before each use. If any, stop using the washer and contact the supplier or manufacturer to replace the damaged components.

### Cleaning the Water Inlet Filter

- Rotate the water inlet filter head to remove the lower part, then take out the filter for cleaning.
- After cleaning, put the filter back into the filter head and rotate the filter head to reassemble it.



### Cleaning & Storage

- Drain the machine and the water pipe before storage. Wipe the machine body with a soft brush or a clean cloth. Do not use water, solvents or polishes. Keep the machine in a safe and dry place away from children. Do not place articles on the machine.
- Please protect the washer and accessories from frost in storage.

# 06 Troubleshooting

Issues	Possible Causes	Solutions
The washer starts, but the self-priming function does not work, or the pressure is inadequate.	The washer is too much higher than the water surface level.	Lower the washer, and make sure the distance between the washer and the water surface is no more than 1.5 meters.
	The hose female connector and the hose male connector are poorly connected.	Connect the hose female connector to the hose male connector properly.
	The water inlet filter is blocked or not fully submerged in water.	Clean the water inlet filter/filter head and fully submerge them in water.
	The hose is bent or twisted.	Straighten the hose.
The multi-function nozzle leaks water.	The nozzle is not fully rotated into place.	Rotate the nozzle fully into place.
Water flows out after the washer is turned off.	There is water residue in the pump after the washer is turned off.	Drain the water residue before storage.
No soap sprays out at the foam/shower mode.	There is no soap in the soap holder.	Refill the soap.
The washer does not start.	The battery pack is not properly installed.	Reinstall the battery pack.
	The battery pack is depleted.	Charge the battery pack before use.
The pressure of the washer is discontinuous.	Air is drawn by the pump.	Make sure the hose and the washer are properly connected.
		Fully submerge the water inlet filter head in water.
The washer automatically stops.	The battery pack is depleted.	Charge the battery pack before use.
	The battery pack is too hot, and the overheat protection is enabled.	Wait for the temperature to drop before turning on the washer.
The self-priming function does not work when the washer has not been used for a long time.	Air is trapped in the pump.	Put the water inlet filter head into a bucket or connect the washer to a faucet, then turn on the washer.



# Regulatory Compliance Information

---

## Federal Communications Commission Supplier's Declaration of Conformity

This supplier's declaration of conformity is hereby for

Product: HOTO 20V Pressure Washer Pro

Model Number(s): QWXCJ002

Brand/Trade: HOTO

We declare that the above mentioned device has been tested and found in compliance with CFR 47 Part 15 Regulation.

This device complies with part 15 of the FCC Rules. Operation is subject to the following two conditions: (1) This device may not cause harmful interference, and (2) this device must accept any interference received, including interference that may cause undesired operation.

**Note:** This equipment has been tested and found to comply with the limits for a Class B digital device, pursuant to part 15 of the FCC Rules. These limits are designed to provide reasonable protection against harmful interference in a residential installation. This equipment generates, uses and can radiate radio frequency energy and, if not installed and used in accordance with the instructions, may cause harmful interference to radio communications. However, there is no guarantee that interference will not occur in a particular installation. If this equipment does cause harmful interference to radio or television reception, which can be determined by turning the equipment off and on, the user is encouraged to try to correct the interference by one or more of the following measures:

- Reorient or relocate the receiving antenna.
- Increase the separation between the equipment and receiver.
- Connect the equipment into an outlet on a circuit different from that to which the receiver is connected.
- Consult the dealer or an experienced radio/TV technician for help.

Representative of Responsible Party for SDoC

Company: Shanghai HOTO Technology Co., Ltd.

Address: Building 45, No.50 Moganshan Road, Shanghai, China

Country: China

Telephone No.: 400-021-8696

**Manufacturer:** Shanghai HOTO Technology Co., Ltd.

**Address:** Building 45, No.50 Moganshan Road, Shanghai, China

Designed by **HOTO**