

Buy Gold With Confidence

Yanfolila Gold Project
Single Mine Origin
Fact Sheet





Hummingbird Resources

At Hummingbird we aim to produce gold profitably and build on our medium to long term growth initiatives, whilst maintaining our focus on operating responsibly through strict Environmental, Social and Governance (“ESG”) standards and with respect for our stakeholders. Our vision is to become a multi asset, multi jurisdiction gold producer, while maintaining and continually growing our ESG initiatives, and improving our technical expertise to support the long-term growth of the Company for the benefit of all our stakeholders.

OUR DUTY

At Hummingbird we believe that it is our duty to work across all our operations in the most socially and environmentally responsible way possible. From Board level through to operational staff working on the ground, Hummingbird employees recognise the importance of working safely and respecting the environment and communities we are privileged to work in.

TRACEABILITY

Single Mine Origin (‘SMO’) gold is a movement to change the global gold supply chain to ensure responsibility and traceability. A new global standard for gold that ensures it to be responsibly sourced and fully traceable to a single mine. Available and affordable.

MALI

The Republic of Mali (‘Mali’) is Africa’s third largest gold producer. The country has been EITI-compliant since 2011 and the mining sector, as a large contributor to the GDP, is considered a priority industry. For over 25 years, Mali has been home to international mining companies’ commercial operations and gold constitutes approximately 90% of its mineral production.

WORLD GOLD COUNCIL

As part of our World Gold Council (‘WGC’) membership, and commitment to implement international best practices, the Board of Hummingbird declared its intention to adopt the WGC Responsible Gold Mining Principles (‘RGMPs’).

About the Yanfolila Gold Project



The Yanfolila Gold Mine ('Yanfolila'), located in southern Mali, is a high-grade open pit mining operation, with underground potential, which poured its first gold, on time and on budget, in December 2018.

OTHER KEY HIGHLIGHTS INCLUDE:

Carbon-in-leach process plant with current blended ore throughput capacity of up to 1.4 million tonnes per annum

2021 production guidance range of 100,000 – 110,000 ounces

Total project mineral resources (Indicated and Inferred) as of 31 Dec 2020 of 1,929,000 ounces of gold

Significant scope to increase the reserve base and the life of mine through on-going near mine exploration and the underground development, with 2021 exploration budget doubled to \$10 million

Yanfolila operates to high levels of international standards, including the WGC RGMPs, is socially and environmentally responsible, as well as a proud provider of traceable gold to SMO. SMO ensures that all gold produced at its partnership mines is done so within its framework of procedures to demonstrate best practice in terms of:



Employment Practices



Environmental Stewardship



Health & Safety



Community Engagement



Corporate Government



ESG in Practice: Yanfolila

Through our four ESG pillars, at Yanfolila we can build a lasting legacy and make a long-lasting sustainable contribution to the communities in which we operate.

ENVIRONMENT

Comprehensive material recycling programme in place with local and national accredited contractors

SOCIAL

Local healthcare clinics, pharmacy supplies and maintenance support

Introduced an annual malaria community spraying campaign, seeing significant reduction rates at villages sprayed

Funded a Beekeeping initiative providing training support for beehive and honey manufacturing

Established soap making factories, where locals are trained in how to produce and sell soap

The development of market gardens where over 800 women work year round harvesting fruit and vegetables to sell to local communities

Built and provided water supply to local villages

PEOPLE & ETHICS

High local and regional employment with around 95% national and >25% local (inc. contractors)

Local and country supply chain focus

HSE

Lowest incidence of malaria among workers in 2020 since the mine opened

Substantial support to the health structures of Bougoudalé, Soloba and Yanfolila, by providing medical equipment and consumables for the fight against COVID-19

78%
recycled

process water recycled in 2020

+8,000
trees

reforested per year. A further 20 hectares will be planted in 2021

+40
employees

at poultry farms that provide work education and veterinary services

0.29
lost time injury frequency rate

Total Recordable Injury Frequency Rate of 0.82 in 2020

11
salaries

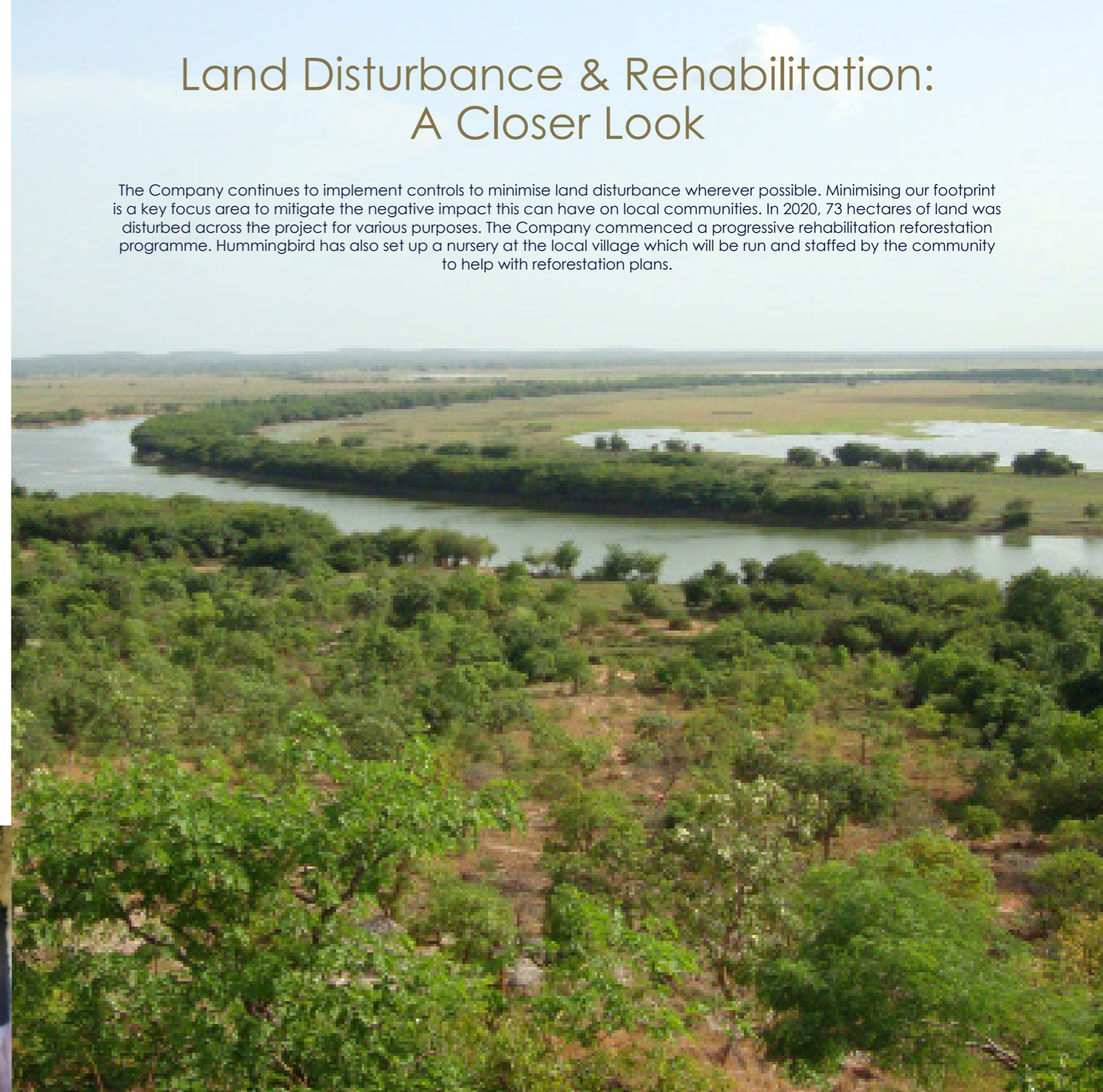
paid for school teachers at local village schools


+800
women

employed at local village garden markets

Land Disturbance & Rehabilitation: A Closer Look

The Company continues to implement controls to minimise land disturbance wherever possible. Minimising our footprint is a key focus area to mitigate the negative impact this can have on local communities. In 2020, 73 hectares of land was disturbed across the project for various purposes. The Company commenced a progressive rehabilitation reforestation programme. Hummingbird has also set up a nursery at the local village which will be run and staffed by the community to help with reforestation plans.





CLINIC

Critical Care International (CCI)

Local communities must benefit directly through the mine, through employment, and through long term, life changing improving initiatives. One such initiative is our partnership with our medical service partners CCI, who work alongside our doctors and nurses and continue to deliver an exceptional standard of health-care, both to our workforce of over 1,300 employees and contractors, and to the wider region through our Community Health Programme.

AREAS OF FOCUS

Malaria, communicable diseases, chronic conditions & occupational health

In 2019 the clinic provided:

+3,500 initial consultations

Delivered first aid training courses to 204 employees

Provided annual medical checks to all direct employees

