

The Original
smarTrike[®]

By/Par smarTrike[®]



www.smarTrike.com

<https://www.youtube.com/user/SmartTrikeOfficial>

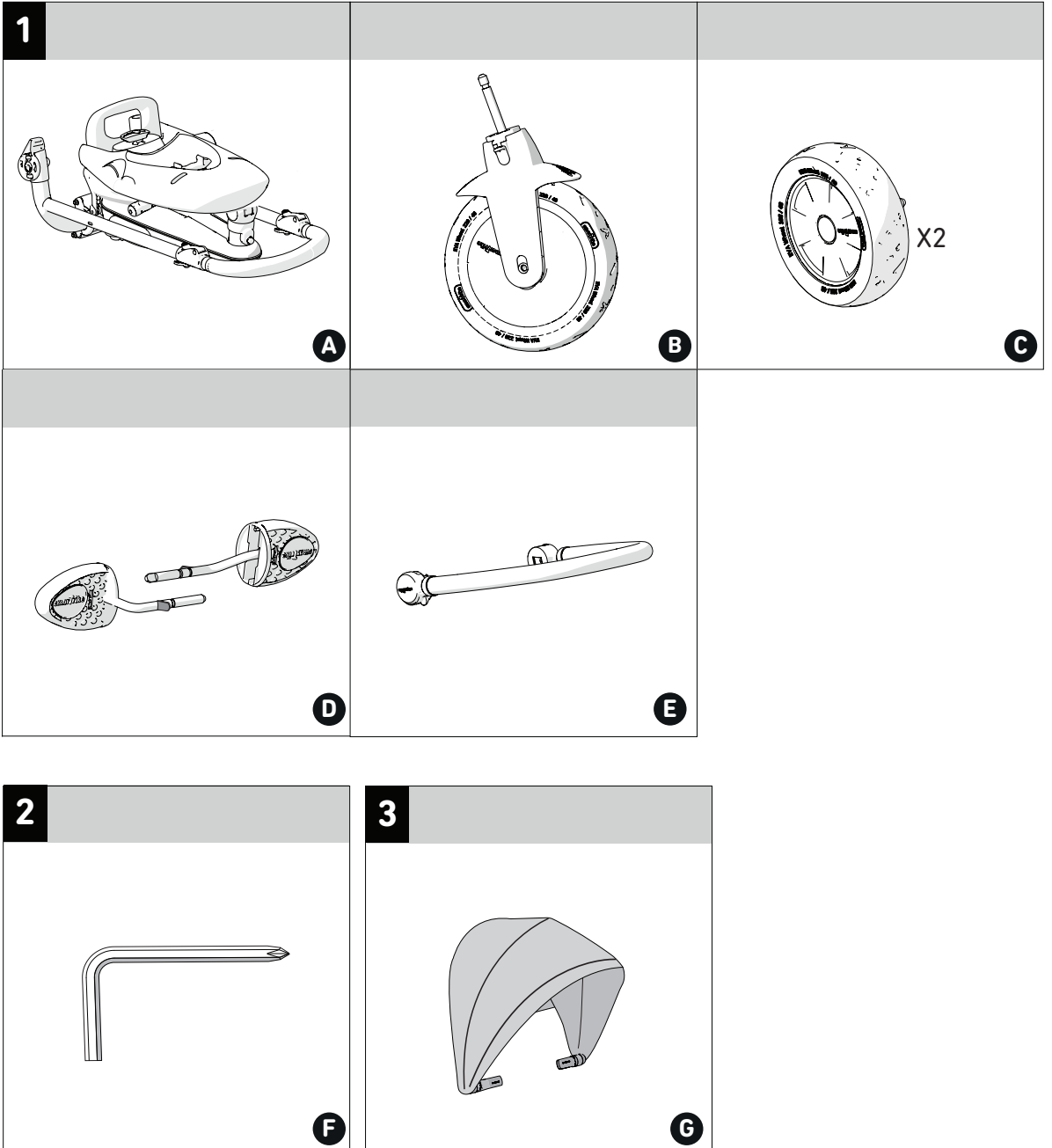
6 in 1
10m-36m

502

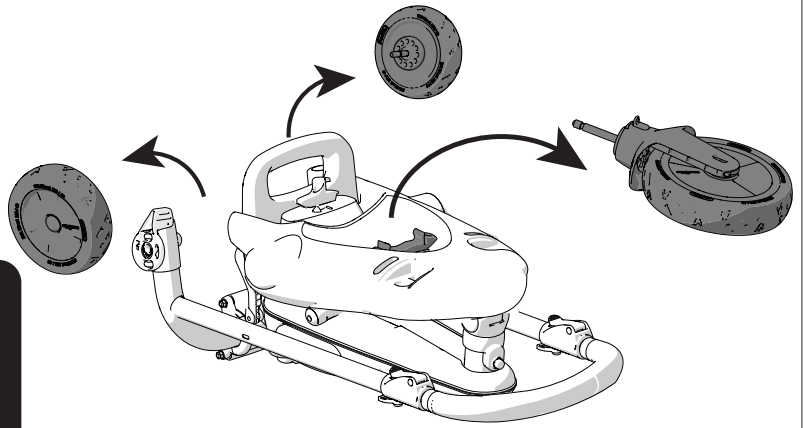


50228285603

Parts included / Piezas para el montaje



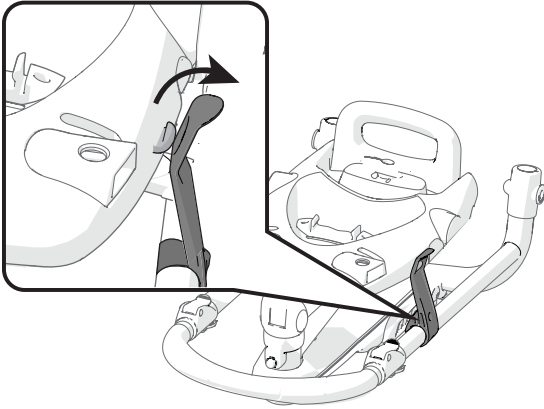
1



Take the wheels out and place them next to the trike.

Saque las ruedas y colóquelas al lado.

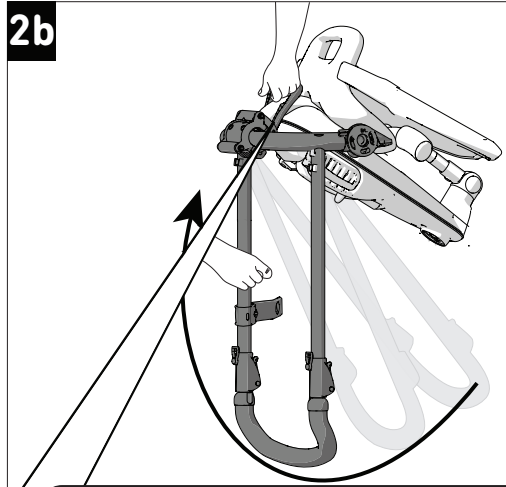
2a



Release the latch on the side of the frame.

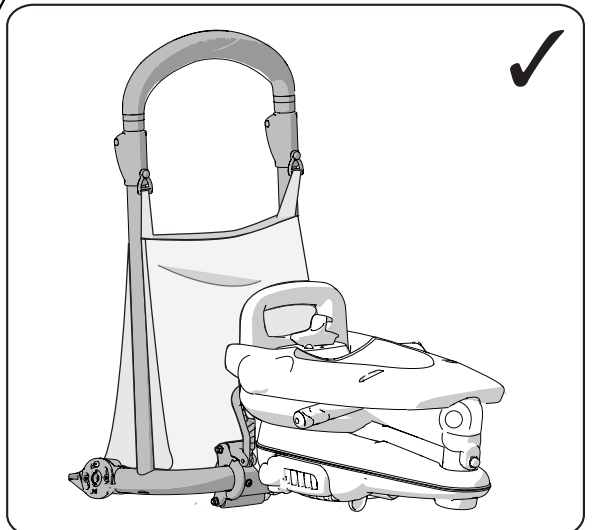
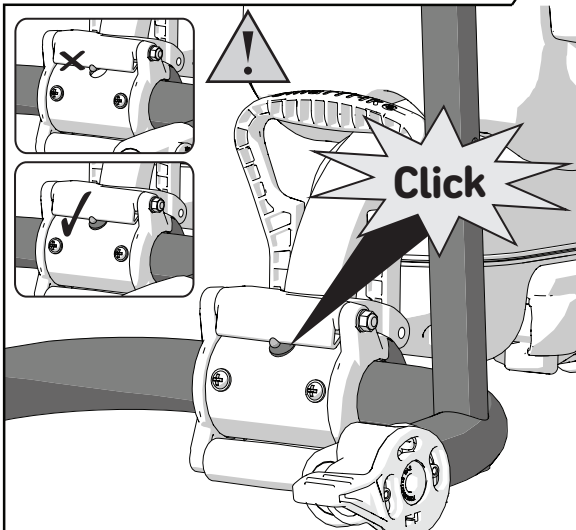
Abra la pestaña del costado del marco.

2b

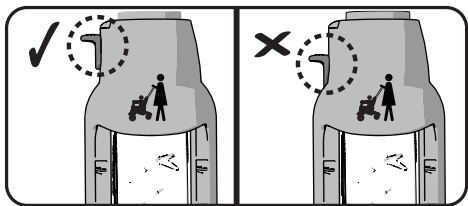


Rotate the parent handle in the direction of the arrow until it clicks into place.

Gire el manillar parental en la dirección de la flecha hasta que que escuche un clic .



3



1

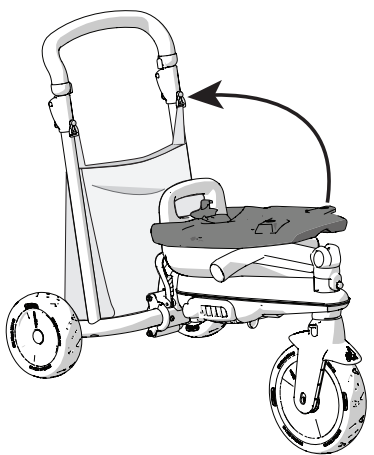
Click

2

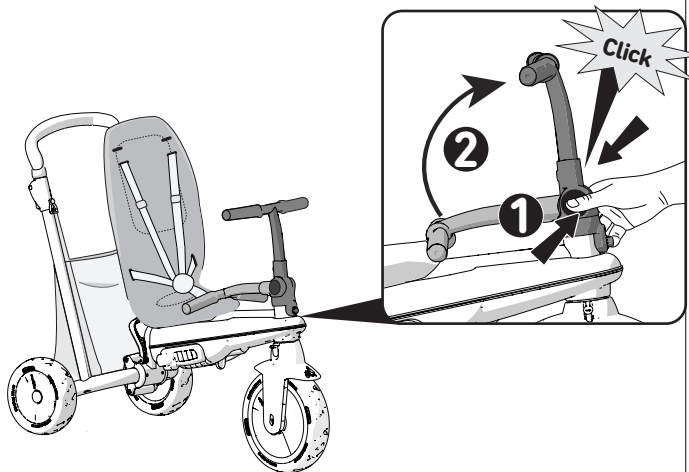
Click

Click the wheels onto the frame.
Coloque las ruedas, deberá escuchar un click.

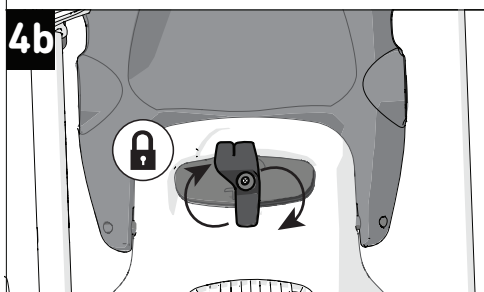
4a



4c



4b

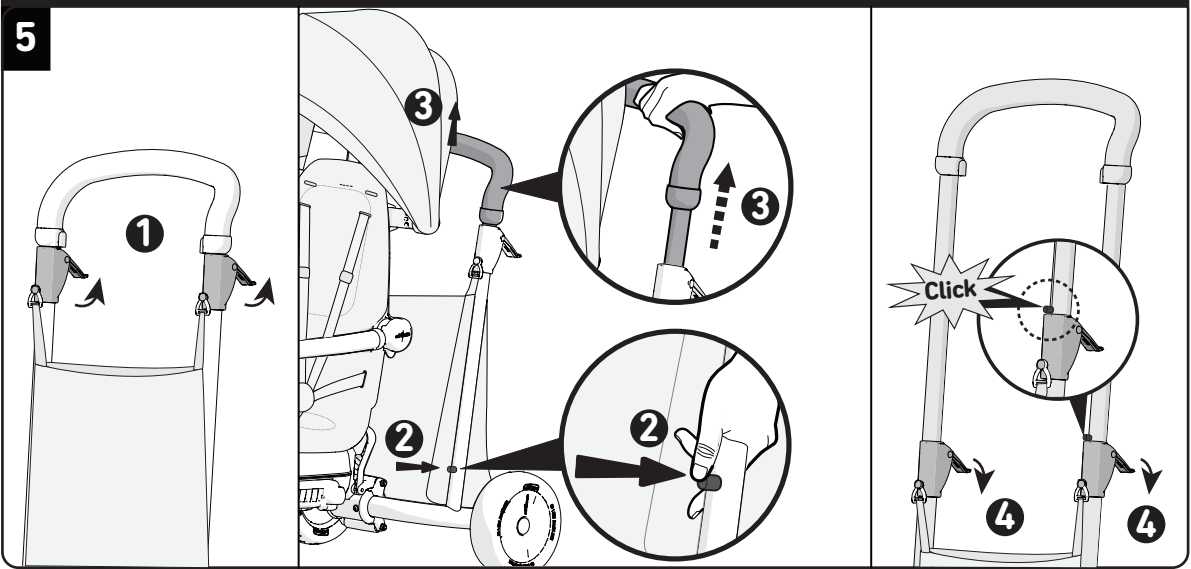


Push the buttons on the side of the handlebar together to lift the handlebar up.

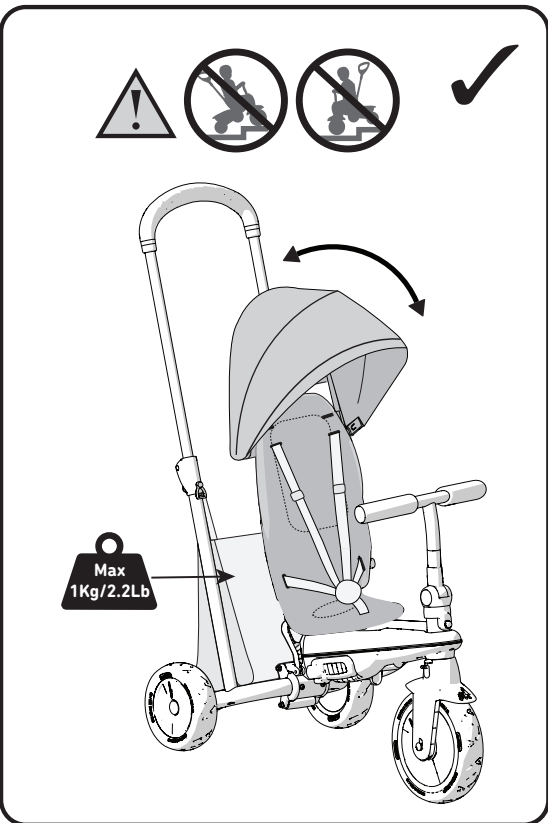
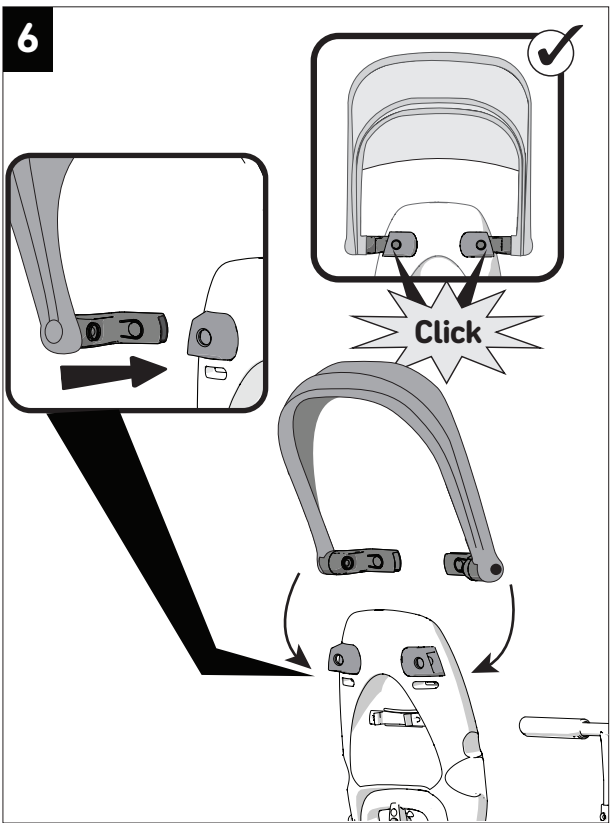
Coloque el manillar en su lugar apretando al mismo tiempo los dos botones que se encuentran en los laterales.

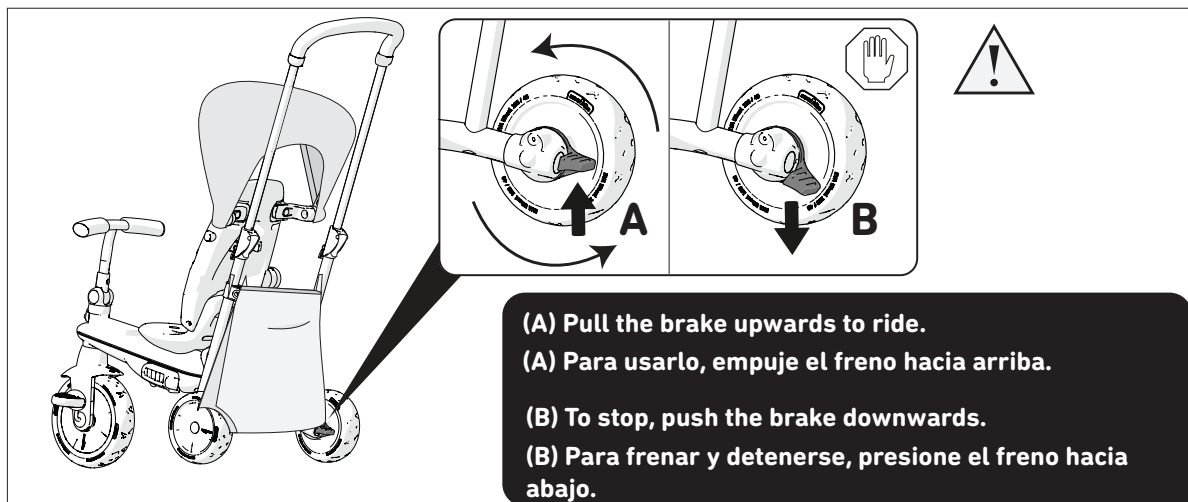
1. Release the red levers on either side of the parent handle.
2. Release the button.
3. Pull the handle all the way up until you hear a click.
4. Lock the levers and you are ready to ride.

1. Suelte las palancas rojas a cada lado del manillar principal.
2. Suelta el botón.
3. Tire del asa hacia arriba hasta que escuche un click.
4. Bloquee las palancas.



You are ready to ride / Está listo para usar

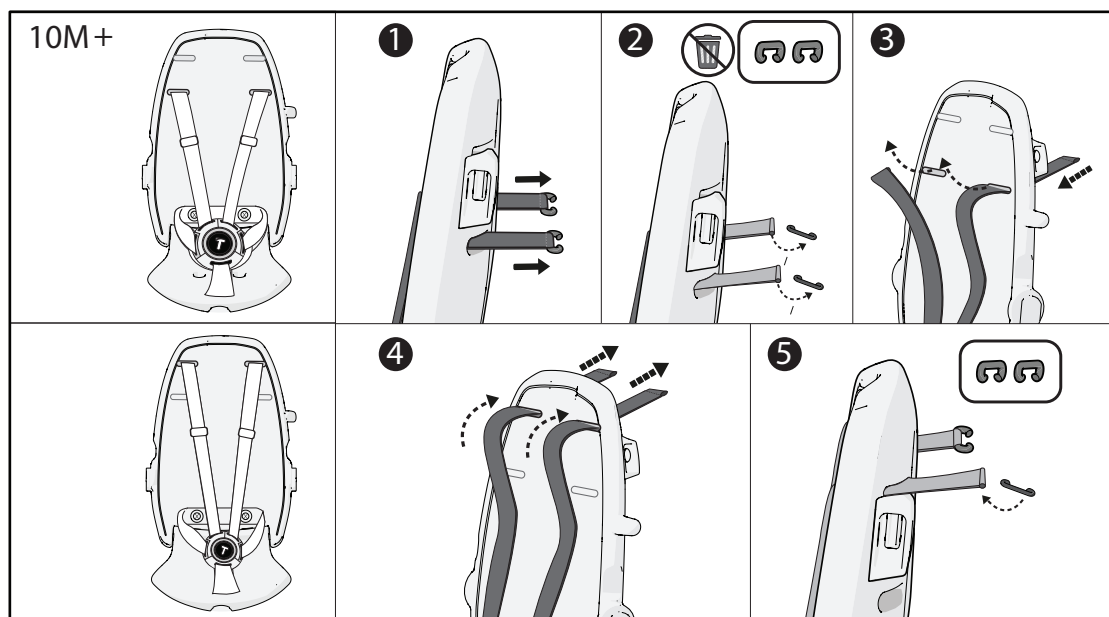




Adjust the harness / Ajuste la altura adecuada de las cintas de seguridad

⚠ WARNING! Use this harness at all times .

⚠ ¡ADVERTENCIA! Utilice siempre el arnés de seguridad .



2. Release the plastic parts attached to the straps.

3. Pull the straps outward in the direction of the arrow.

4. Pull the straps through the top slots on the back of the seat.

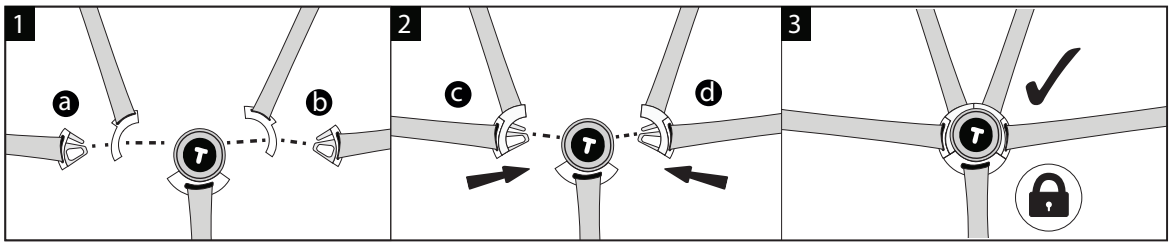
5. Put the plastic parts back.

2. Retire las partes plásticas conectadas a los cinturones de seguridad.

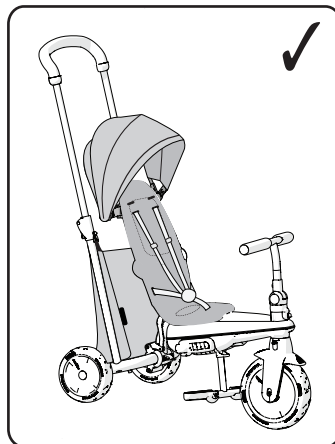
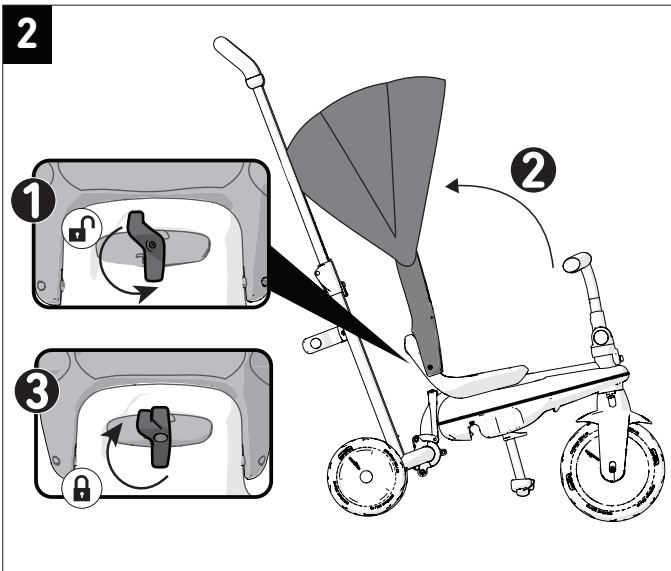
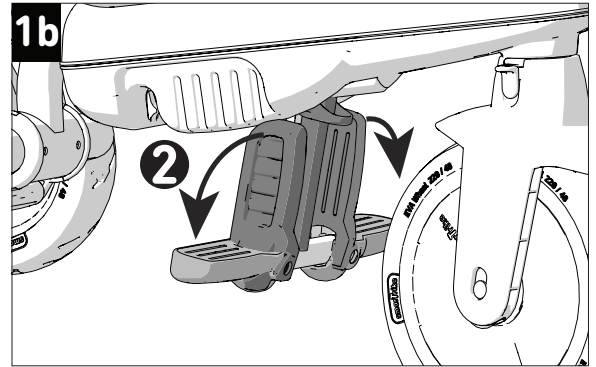
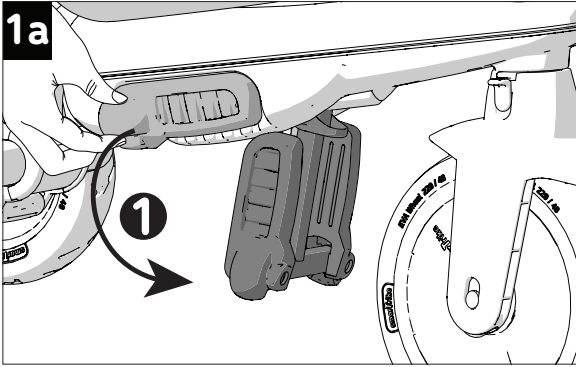
3. Tire de los cinturones de seguridad hacia afuera en la dirección indicada por las flechas.

4. Inserte las correas en los dos espacios provistos arriba en el respaldo del asiento.

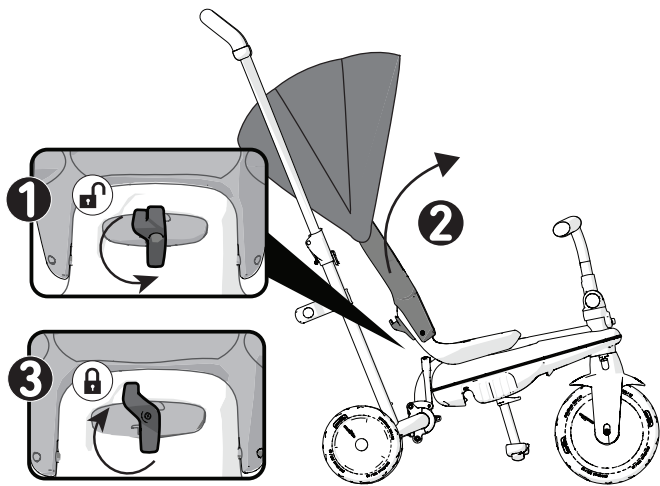
5. Coloque las partes plásticas nuevamente en las correas.



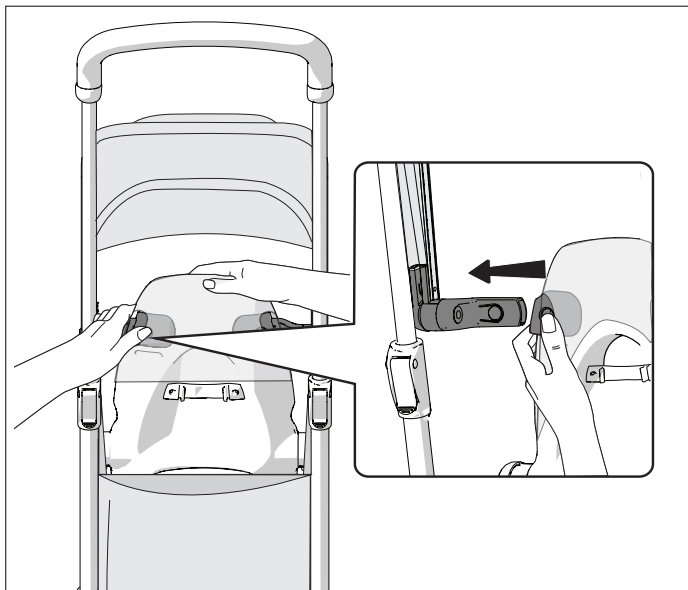
Usage / Uso 10M+



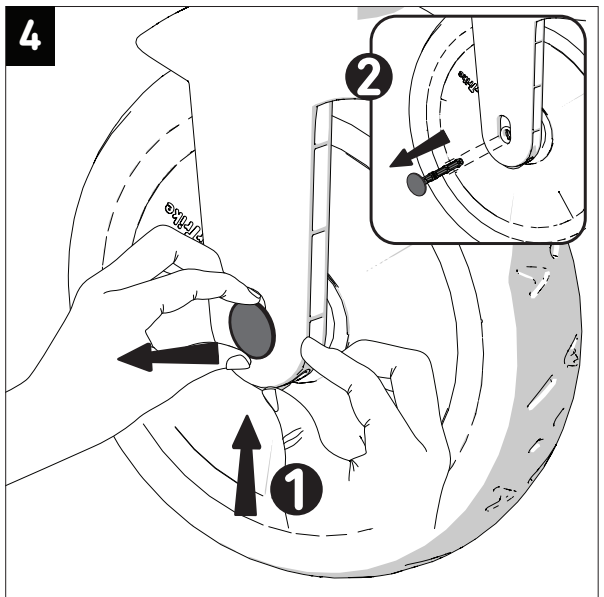
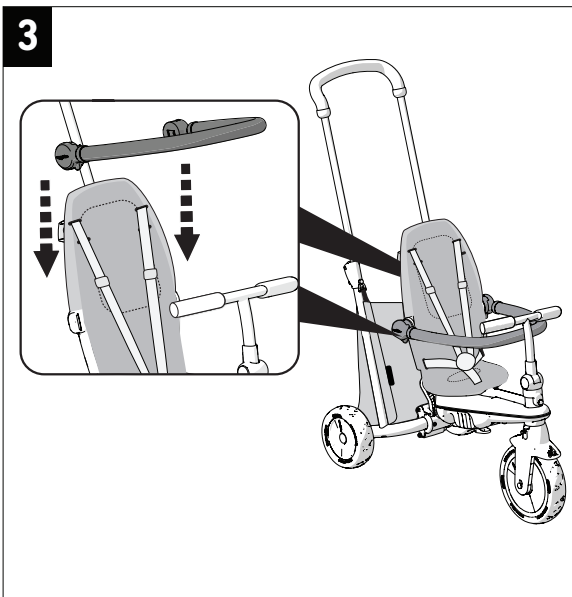
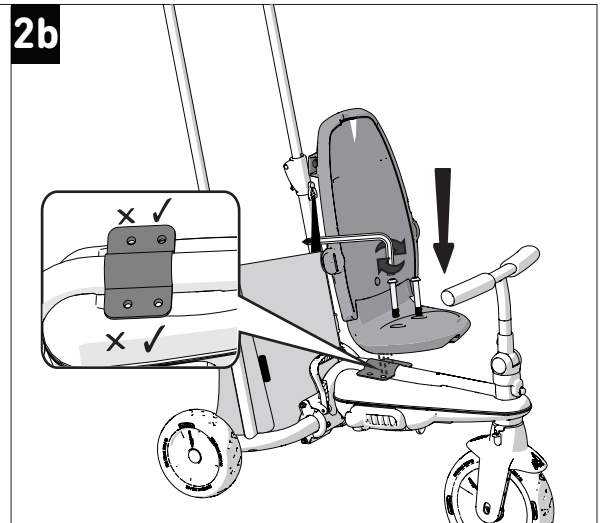
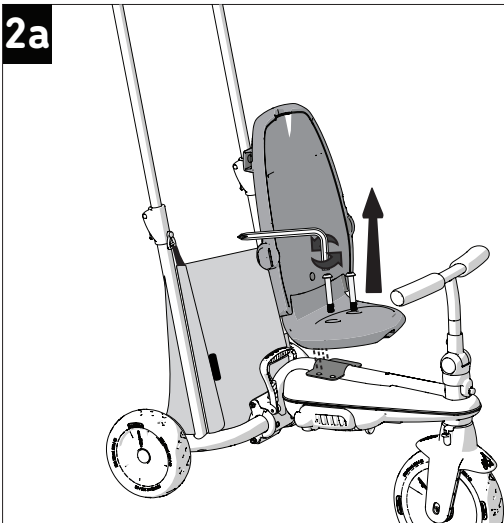
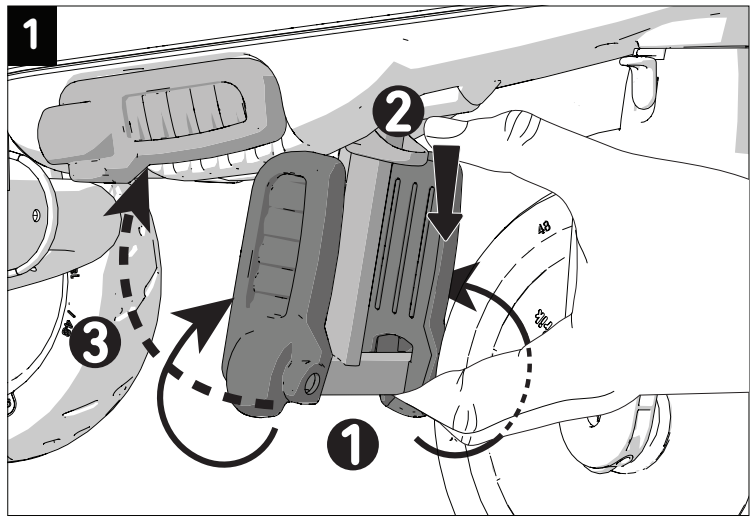
3

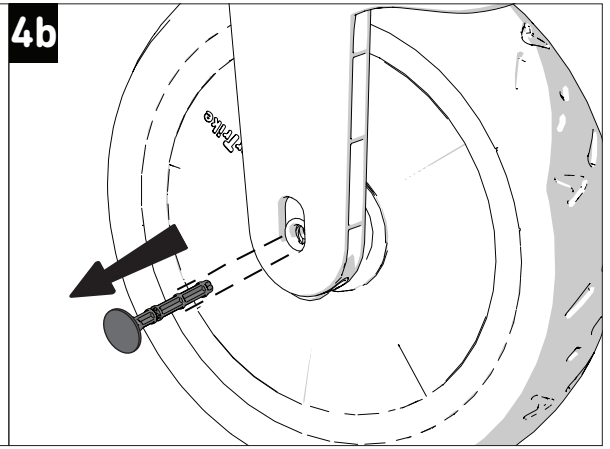
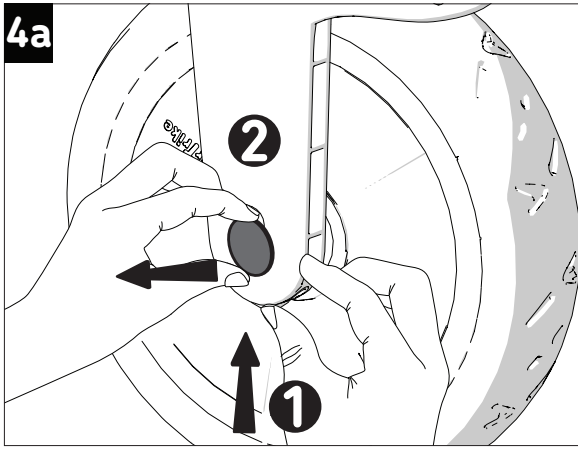


Usage / Uso 18M+

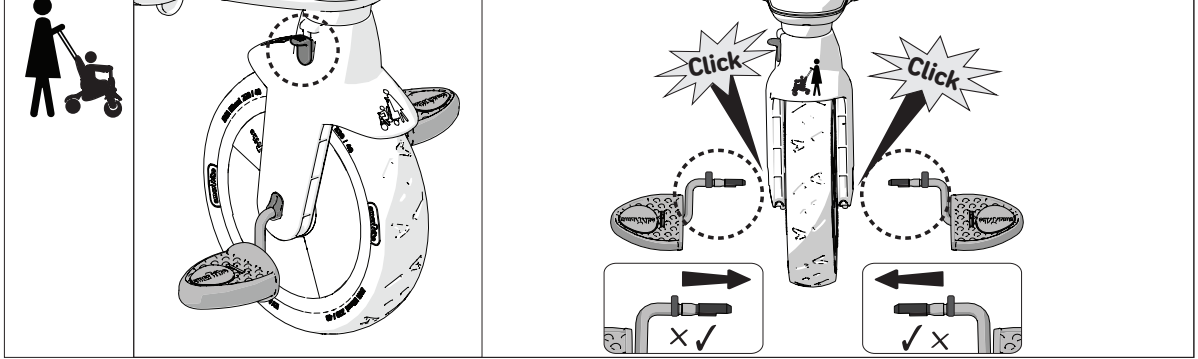


Usage / Uso 24M+

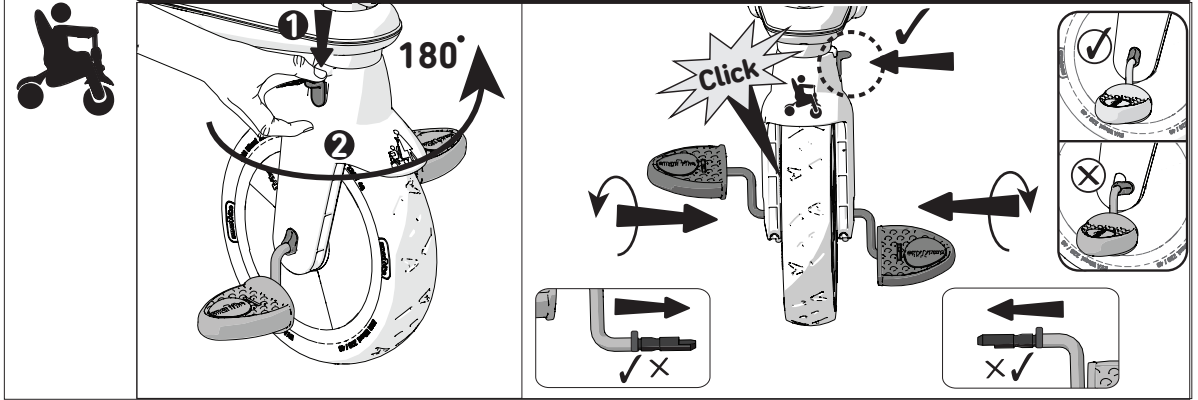




5a Practice pedaling: Attach the pedals with one click.
 Para practicar el modo pedaleo sin pedaleo, coloque los pedales en la primera posición, escuchando un solo clic



5b Independent pedaling: Attach the pedal and turn until you hear a second click.
 Para que el niño pedalee por sí mismo: empuje el pedal hacia adentro hasta escuchar un segundo clic.

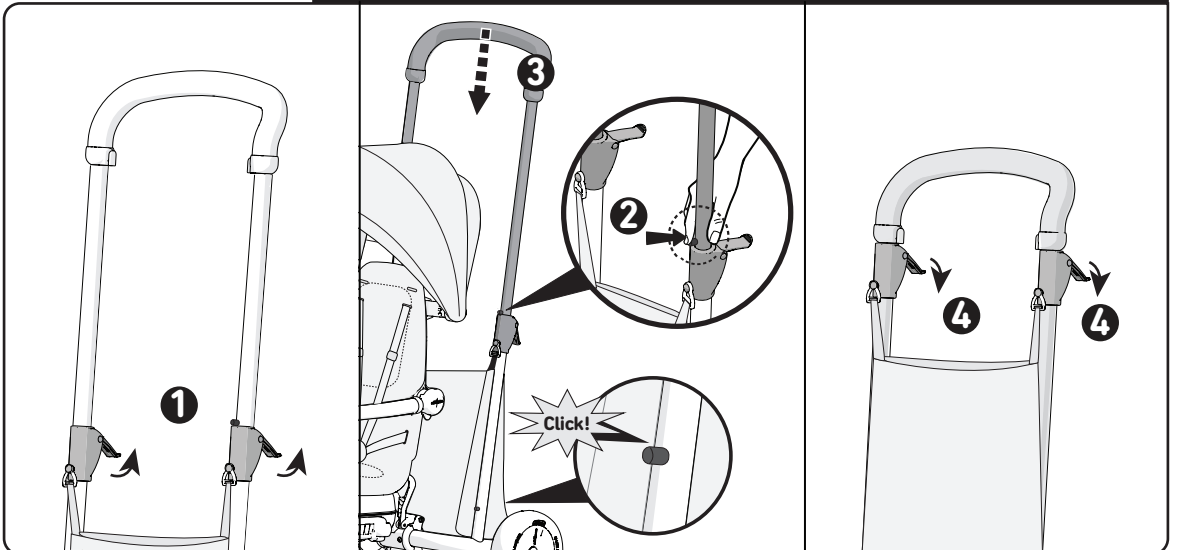




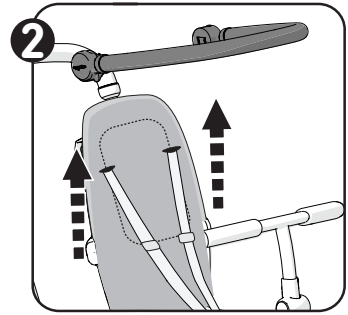
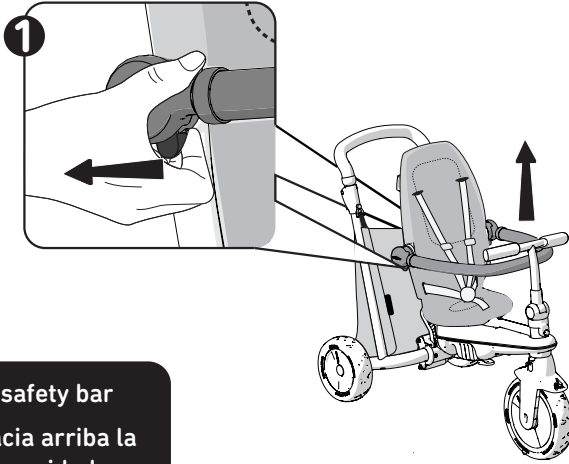
Usage/ Uso 30M+



- | | |
|--|---|
| <ol style="list-style-type: none"> 1. Open the security latches. 2. Press the pin in to release the frame. 3. Push the parent handle down until you hear a click. 4. Close the security latches. | <ol style="list-style-type: none"> 1. Abra las pestañas. 2. Apresione la pieza de metal . 3. Empuje la barra parental hacia abajo hasta que escuche un click. 4. Después cierre las pestañas para bloquearlo.bloquer. |
|--|---|

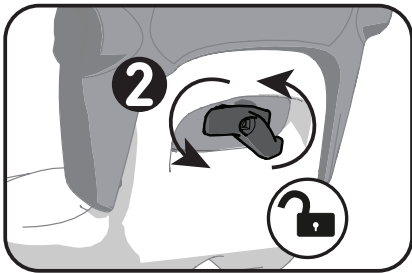
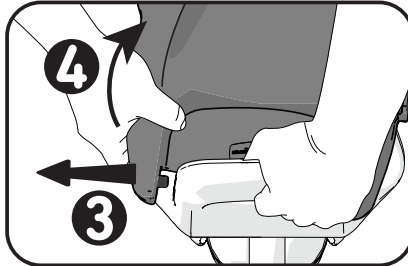
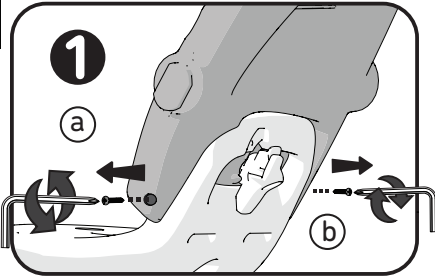


2

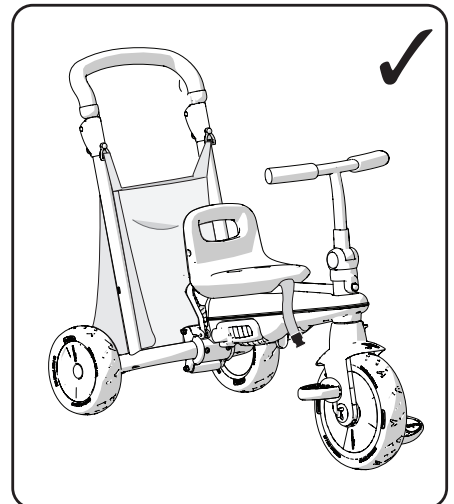
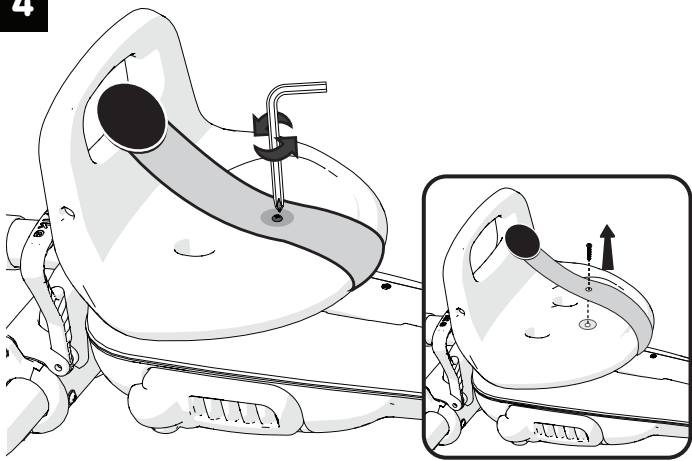


Lift up the safety bar
 Levante hacia arriba la barra de seguridad.

3



4



Folding instructions / Instrucciones para el plegado.



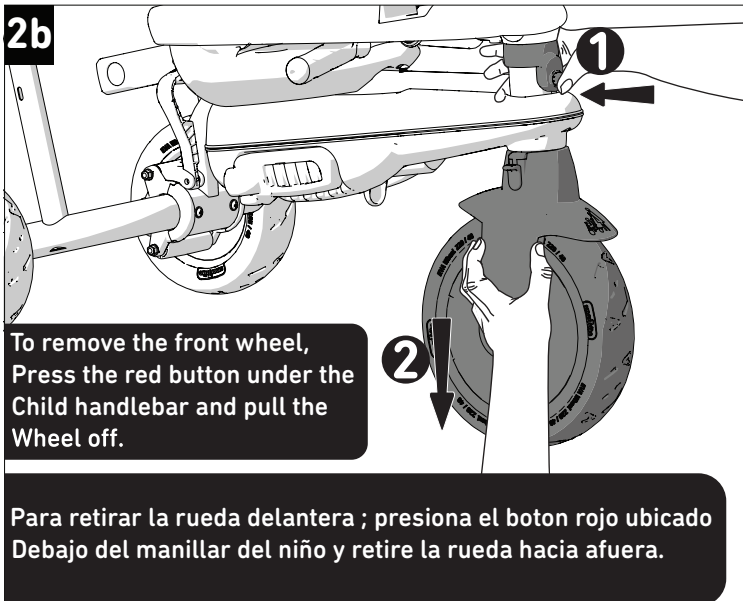
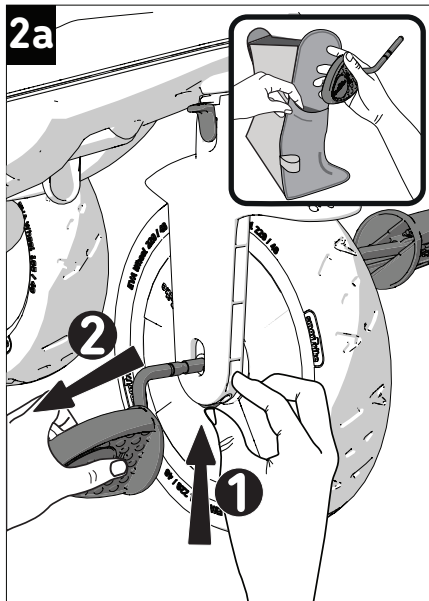
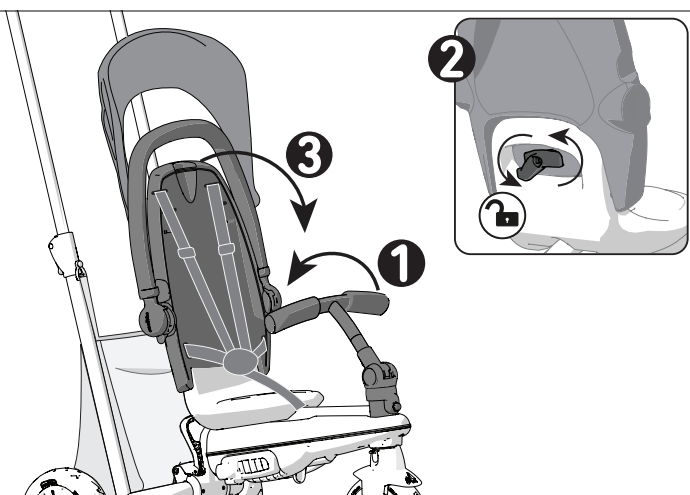
1

1. Fold in the child handlebar.

1. Pliegue el manillar del niño.

3. Fold down the seat.

3. Doble el respaldo del asiento hacia Adelante.

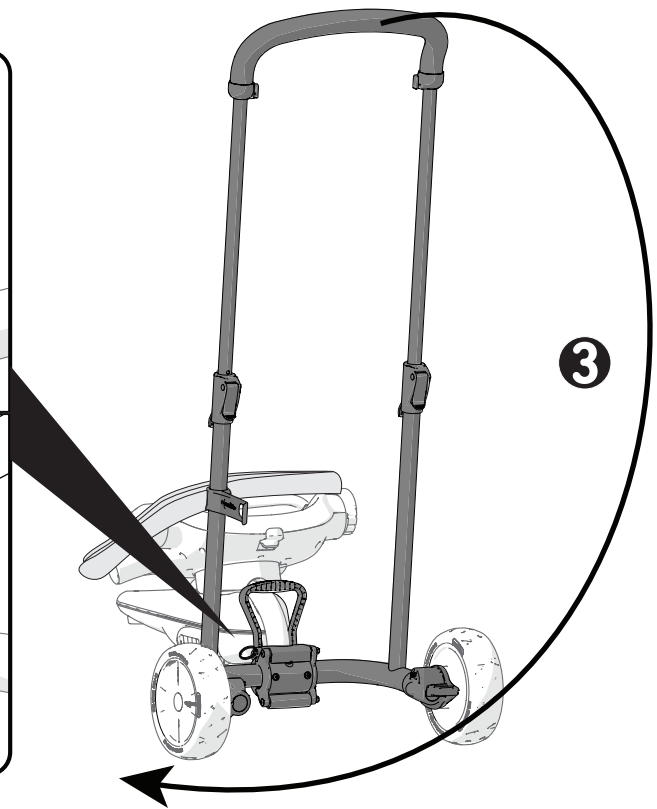
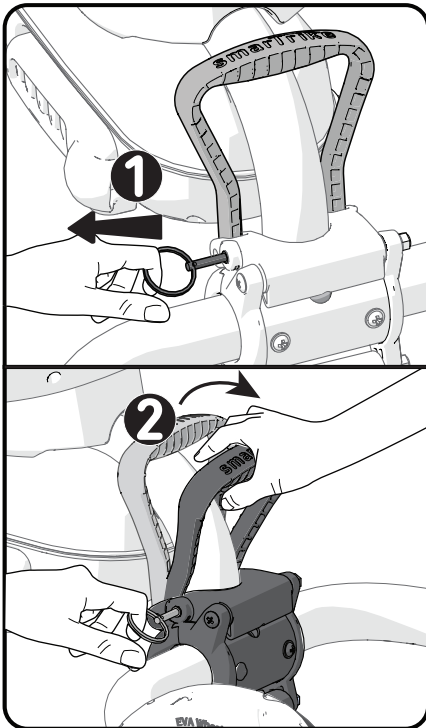


1. Pull out the pin.

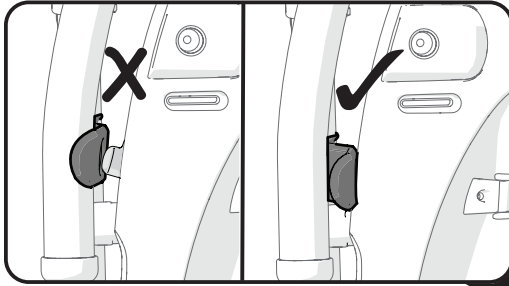
1. Tire del pasador.

2. Pull the lever on the back Of the frame and turn the parent Handle in the direction of the Arrow.

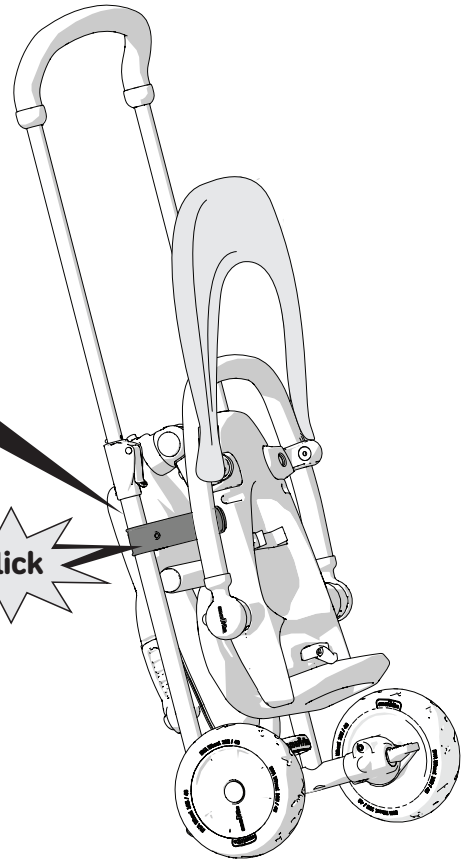
2. Tire de la palanca del asiento trasero y gire el manillar parental en la dirección que indica la flecha.



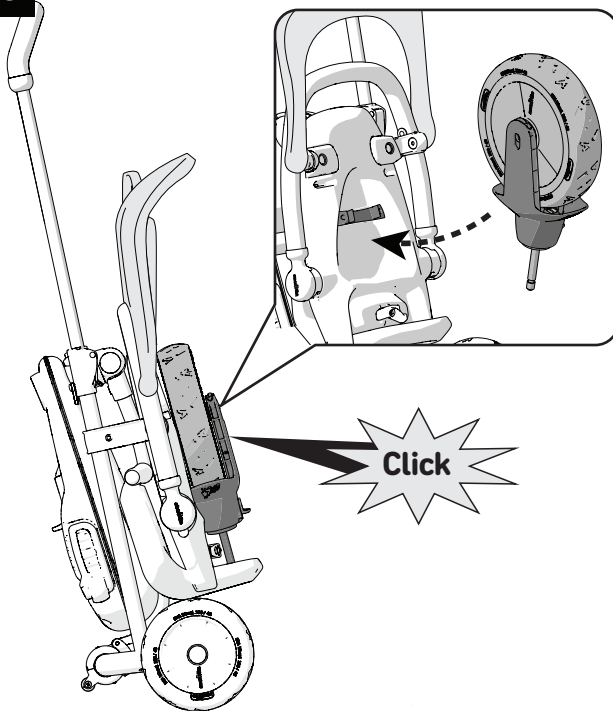
4



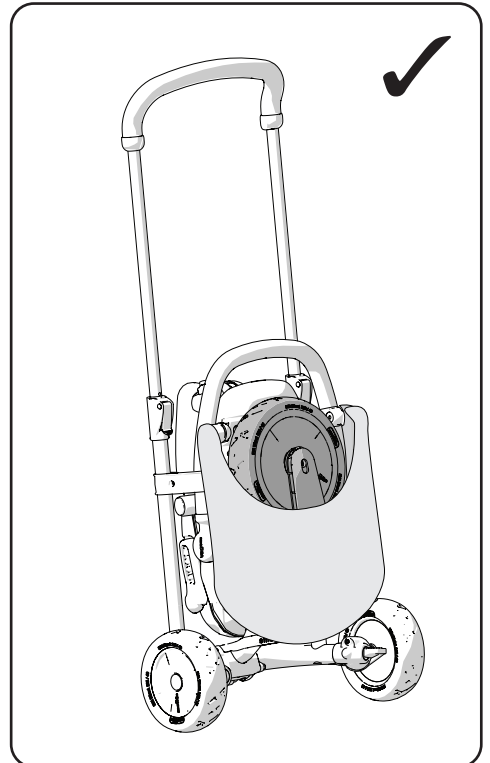
Click



5



Click



⚠️ WARNING!

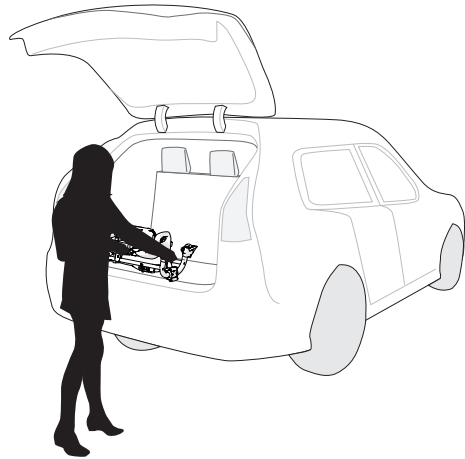
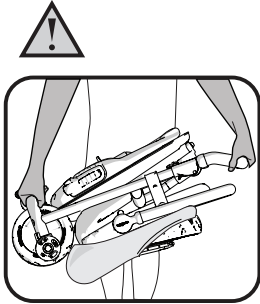
To avoid injury, ensure that your child is kept away when unfolding and folding this product.

⚠️ ¡ADVERTENCIA!

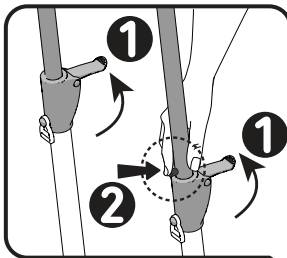
Para evitar riesgo de lesiones, asegúrese de que el niño se mantiene a cierta distancia cuando monte y pliegue este producto abajo.

For your safety carry the folded product with 2 hands.

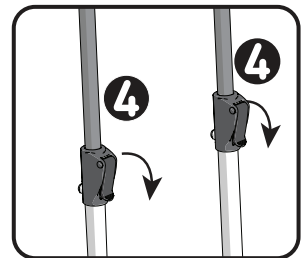
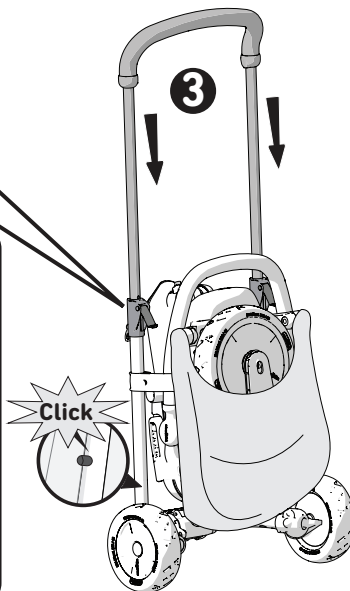
Para transportar el producto con seguridad cuando esté plegado se debe sujetar con las dos manos como se indica.



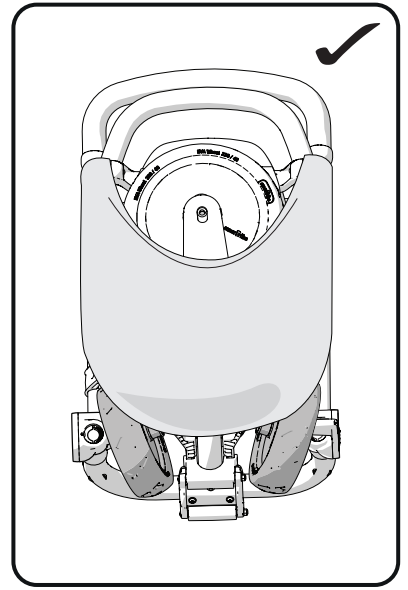
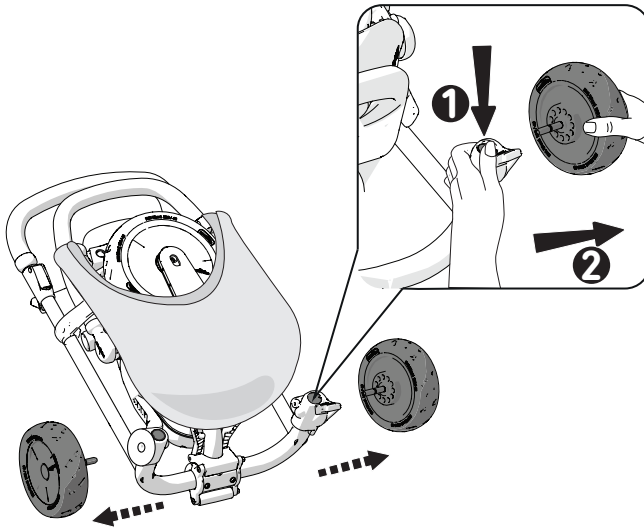
1



1. Open the security latches.
1. Abra las pestañas.
2. Press the pin in to release the frame.
2. Apresione la pieza de metal .
3. Push the parent handle down until you hear a click.
3. Empuje la barra parental hacia abajo hasta que escuche un click.
4. Close the security latches.
4. Después cierre las pestañas para bloquearlo.bloquer.



2



The Original
smarTrike[®]

50228285603