

# SHS-1321 Instruction SHS-1521 Manual

## Convenient Opening of the Door

Simple operation via card and passcode

## Dual-Authentication Feature

Dual-Authentication feature through card and passcode

## Prank Prevention Feature

In the case of entering unregistered information, the attempt is automatically blocked

## Dual-Lock Feature

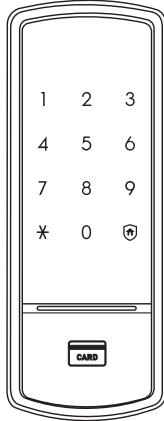
With dual-lock feature, the security is enhanced

## Fire Detection Feature

Built-in fire detection sensor

## Crime Prevention Feature

When going out, crime prevention feature can be used.



Internet Home Page  
[www.samsungsns.com](http://www.samsungsns.com)

SamsungSNS(Inc.) ServiceCenter Representative PhoneNumber  
Anywhere in the country  
**1588-4141**

If you accurately provide the product name, fault condition, and contact number, then we will always provide kind assistance and quick service to customers' questions.

GC68-01789A ED.03

## Precautions for Safety

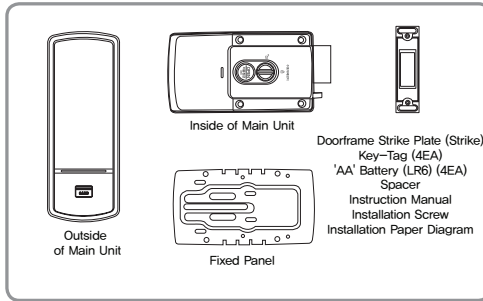


Precautions for safety protect the user's safety and prevent damages and inconvenience due to accidents. Please read this and use the product properly.

- Do not install or repair the product randomly as you want.
- Do not install the product in a location where the gap between the door and doorframe is more than 5mm.
- Cautiously manage the passcode so that other people cannot know it, and regularly change the number.
- Do not operate the product when your hand is wet, and be careful to not let water, beverages, and other liquid to get inside the product.
- Do not forcibly press or use a sharp tool to hit the button.
- When you are going out, always check the ensure that the door was fully locked.
- Properly fit the battery into the product onto its accurate (+/-) terminals. When the battery is incorrectly placed in its direction or charge as displayed into the battery room, leakage and breakage may occur, so please be careful.
- When the battery life is ended, replace all the batteries at once, and avoid using new and used batteries at the same time.
- When cleaning the product, do not wipe it with water, benzene, or alcohol, and instead, use a dry cloth.
- Replace the batteries to new ones within one week of first hearing the battery replacement notification alarm.

## Product Components

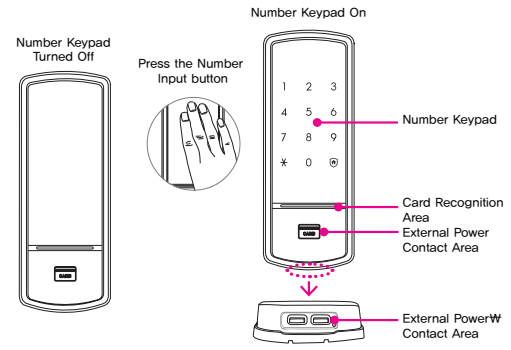
Product components may be changed depending on the installation environment.



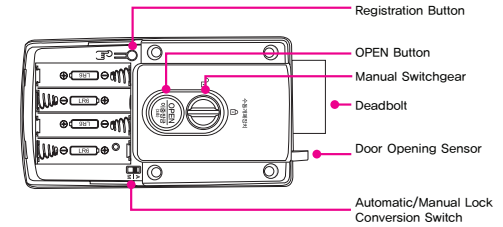
## Warning

You must carry or keep at least one emergency key outside. In the case of an emergency, please read and learn the instruction for manual switchgear.

## Names and Features (Outside)



## Names and Features (Inside)



Opening the cover of the main unit on the inside

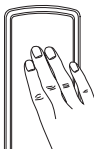


Gently press the battery cover of the main unit on the inside and pull the cover in the direction shown in the arrow.

## Opening the door from the outside (passcode)

When the product is first purchased, it is set in dual-security mode. To set the product into normal mode, please refer to the 'dual-security mode setting' method.

1. Press the [Number Input] button



[Number Keypad] is touched.

2. Enter the passcode.

**Dual-security mode**

Two buttons randomly lit up, so press the two numbers in the sequence.

When all of the lights in the number keypad show up, enter the passcode and press [\*] button.

Success : Ding Dong Deng Dong Melody  
Fail : Ding Dong Ding Dong Melody

**Normal Mode**

When all of the lights in the number keypad show up, enter the passcode and press [\*] button.

Success : Ding Dong Deng Dong Melody  
Fail : Ding Dong Ding Dong Melody

**Reference**

- Passcode must be entered when the number keypad is lit up, so if the lights are not on, then touch the [number keypad] and then re-enter the passcode.
- When the passcode is incorrectly entered to cancel the input, press the [#] button and start from the beginning.
- If the passcode is incorrectly entered for five consecutive sounds, a different alarm sound is played for about 10 seconds, and the operation of doorlock is paused for roughly 3 minutes. During the operation pause status, "beep" sound is played every 10 seconds, and after 3 minutes, a long "beep" sound is played, and the pause status is automatically disabled.

## Opening the door from the outside (card, key tag)

Touch the [number pad]

When the number pad is lit up, contact the card or key tag in the [card recognition area]. After 1 seconds, the door is opened.

Success : Ding Dong Deng Dong Melody  
Fail : Ding Dong Ding Dong Melody

## Opening and closing the door from the inside

**Electrically opening the door**

With the door locked, pressing the [OPEN] button of the main unit on the inside opens the door.

**Electrically closing the door**

With the door manually locked, pressing the [OPEN] button of the main unit on the inside locks the already closed door.

**Mechanically opening the door**

With the door locked, turn the manual switchgear to the right direction.

**Mechanically closing the door**

With the door closed in manual lock status, turn the manual switchgear to the left direction.

\* All registration and setting up can only be operative while the door is open.

## Passcode Registration

Passcode can be registered in 4~12 digits, and only one can be registered to use.

1. Press the [Register] button. 2. Register the new passcode.



Open the battery cover and shortly press [register] button. Enter the new passcode (4~12 digits) and press the [\*] button.

**Caution**

- To prevent theft accidents, it is recommended to use the passcode that is 6 digits or longer (only 0~9 numbers are usable).
- Please be careful to manage the passcode so that other people will not know. Using the same passcode for a long period of time may lead to its exposure, so regularly change the passcode for use.
- Registered passcode cannot be deleted, so register a new passcode to use.

## Card and Key Tag Registration

When card or key tag is registered, previously registered card and key tag information are all deleted, so try to register all cards and key tags at once. Total of 20 card keys and key tags can be registered (ISO 14443 Type A support)

1. Press the [Register] button. 2. Register the new passcode.



Open the battery cover and shortly press [register] button. Contact the card or key tag that needs to be registered.



3. End card key registration

To end registration, press the [register] button of the main unit on the inside.

**Caution**

- To register various cards and key tags continuously, register the card or key tag, and contact another card or key tag within 10 seconds. If another card or key tag is not registered within 10 seconds, the registration automatically ends.
- To check if the card or key tag is normally registered, check the card and key tag, and then close the door.
- "Samsung SNS Doorlock" abides to the "ISO 14443 Type A standards, and the cards, key tags, and NFC-use smartphones that completed certification from "Samsung SNS Doorlock" are able to be registered on the doorlock for use.

## Setting and Disabling Dual-Security Mode

Dual-Security Mode is a mode for prevention of passcode exposure by first pressing two random numbers and then entering the actual passcode.

Open the battery cover and shortly press the [register] button.

Press [7] or [9] button, and then [\*] button to set or disable the dual-security mode.

Ding Dong Melody

1 2 3  
4 5 6  
7 8 9  
\* 0

Ding Dong Melody

[7] button: dual-security mode setting  
[9] button: dual-security mode disable

## Setting and Disabling Dual-Authentication Mode

Dual-Authentication Mode is a mode with enhanced security that only opens the door when both passcode and card are recognized.

To set the dual-authentication mode, at least 1 card needs to be registered.

Open the battery cover and shortly press the [register] button.

Press [4] or [6] button, and then [\*] button to set or disable the dual-authentication mode.

Ding Dong Melody

1 2 3  
4 5 6  
7 8 9  
\* 0

Ding Dong Melody

[4] button: dual-authentication mode setting  
[6] button: dual-authentication mode disable

### Dual-Authentication Mode Gestures

Touch the [number keypad] when the number keypad lights up, enter the passcode and press the [\*] button.

When the [card recognition area] is lighted up, contact the card. If successful, the door will open.

Success : Ding Dong Deng  
Fail : Ding Dong Ding Dong

Success : Ding Dong Deng Dong  
Fail : Ding Dong Ding Dong

## Automatic/Manual Lock Feature

It is possible to set the automatic lock feature that automatically locks the door when it is closed.

Set the [automatic/manual lock] switch inside the main unit to "automatic A" / "manual M" position.

– Automatic Method: When the door is closed, the door locks automatically in two seconds. But, it does not operate when the battery discharges.

– Manual Method: The door does not lock automatically even when it is closed, so the door locks when the [OPEN] button on the main unit of the inside is pressed, or the number keypad is touched.

## Sound Setting/Disabling

The sound from entering the passcode, locking the door, or opening the locked door can be adjusted. When the product is first purchased, the default setting is to play all the sounds. (Two levels)

1. Press the [Register] button.

Open the battery cover and shortly press the [register] button.

Ding Dong Melody

2. Sound setting

Press the numbers between [0~3] and then, [\*] button to set the sound.

Ding Dong Melody

[0] button: Silence (excluding the alarm sound, all sound is disabled.)  
[1]~[3] button: As the levels go up, the sound becomes larger.

## Prank Prevention Feature

When the doorlock is erroneously operated from the outside, this feature sounds an alarm as well as prevents the doorlock from working.

Trying to open the door with unregistered card or key tag, or incorrectly entering the passcode for five times or more, an alarm is sounded, and the doorlock does not operate for 3 minutes.

## Setting/Disabling Dual-Lock

Dual-Lock Feature is a feature to prevent the door from opening from the outside.

Setting Dual-Lock Feature      Disabling Dual-Lock Feature

With the door locked, press the [OPEN] button on the inside for 3 seconds.

Shortly press the [OPEN] button on the inside.

OPEN Dual-lock (3 seconds)

Ding Dong Deng

OPEN Dual-lock (3 seconds)

Ding Dong Ding Dong

### Dual-Lock Action

CARD

Different Melody Sound (Beep)

With the dual-lock feature in setting, touching the number keypad from the outside sounds an alarm, and the door cannot be opened. But, if the manual switchgear is changed to direction, then the door can be opened.

## Setting/Disabling Crime Prevention Feature

To prevent the intrusion from the outside when you are going out, this feature triggers an emergency sound when the doorlock is operated from the inside.

With the crime prevention in setting, pressing [OPEN] button from the main unit on the inside triggers an emergency sound for 5 minutes.

Setting Crime Prevention Feature      Disabling Crime Prevention Feature

When the door is locked, [0] button on the number keypad on the outside lights up. Pressing [0] button within 3 seconds sets the crime prevention feature.

After contacting registered card or key tag, or entering the passcode, press the [\*] button.

Ding Dong Melody

## Disabling Alarm Sound/Emergency Sound

After opening the battery cover on the main unit of the inside, press the [register] button or take out the battery. Then, contact the registered card or key tag, or enter the passcode, and then press the [\*] button.

## Battery Replacement

### When the battery replacement notification alarm sounds

If opening the door with passcode, card, or key tag triggers "Fur Elise" melody, then it is time to replace the batteries.

### Replacing the battery

All 4 batteries must be replaced to new ones within 1 week of first sounding of the alarm.

– Depending on the door lock usage situation, following number of batteries are inserted to be used.

Caution

- Battery life for use may vary depending on its manufacturer, manufactured date, and user environment. (With 4 AA-type alkaline 1.5V batteries, about 10 months of use based on 10 uses per day is possible.)
- Liquid coming from batteries can damage the product, so please check on this in regular basis (about once in 6 months).
- After the battery replacement notification alarm is sounded, passcode /card registration, changes, or feature setting cannot be made until the batteries are replaced.

## Use of Emergency Batteries

Not changing the batteries and continuing to use them when it is time to replace the batteries will cause them to discharge, preventing the doorlock from properly operating.

### Opening the door with emergency batteries

Purchase the emergency battery (9V) from nearby convenience store or electronics store.

– Rather than regular manganese battery or rechargeable battery, it is best to use alkaline battery, which has longer operation life.



With the 9V battery contacting the outside power (emergency battery) contact area on the outer side of the main unit, contact the card or key tag, or enter the passcode.

7

8

9