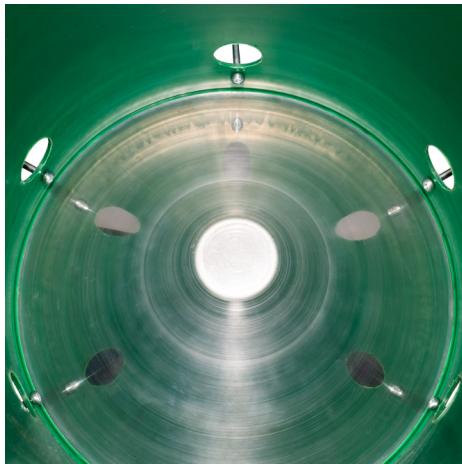
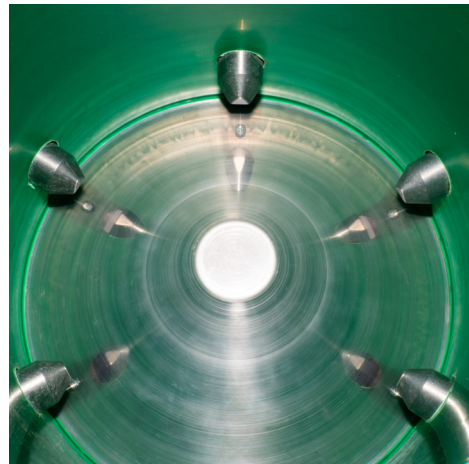


1. First fit the port bolts from the inside out.



2. Then place the cone into the feeder, making sure it sits flush with the base and is not resting on a bolt head.



3. You can now fit the ports and tighten the wing nuts up to secure the ports.



4. The feeder can now be filled with seed.

If you are retro-fitting the feeder cone then simply loosen of the wing nuts enough so that the ports can be withdrawn.

Once withdrawn please follow the instructions from figure 2.



Visit our site