



## **Port Fitting**

*If you are fitting the optional feeder cone please see over before fitting the ports.*

Simply push the ports into each opening on the bucket, lining up the bolt holes.

With the Farmland Feeder (left), the long bolt should be pushed through from the inside and then tighten the wing nut.

The Game Bird Feeder is exactly the same apart from the short bolt is pushed from the outside with the wing nut tightened from the inside (except when cone is present).



## **Feeder Port Guard**

The Farmland Feeder now comes with feeder port guards to help reduce food wastage and prevent birds entering when the feed falls below the minimum feed level.

Simply clip onto the bolt and tighten the wing nut.



## **Post Mount Fitting**

The post mount should be attached to a fence post, tree or other appropriate structure next to a hedgerow, woodland or other suitable farmland bird habitat.

Using the holes provided, the mount can be easily screwed or nailed to a post. When attaching to a tree we recommend using a strong endless ratchet strap to prevent damage to the trunk.

The top of the post mount should be inserted inside the protruding slot at the rear of the feeder.

When correctly fitted you should be able to tap the metal handle against the side of the post mount.

The centre of the base should also be positioned over the hole in horizontal part of the post mount.



## **Fill Your Feeder**

Once your feeder is fitted into position you will now need to fill it with the appropriate feed.

Check and fill your feeder regularly to ensure constant supply.

It is important that a minimum level is maintained and this should not be allowed to go lower than the base of the port opening.



## **Out Of Season**

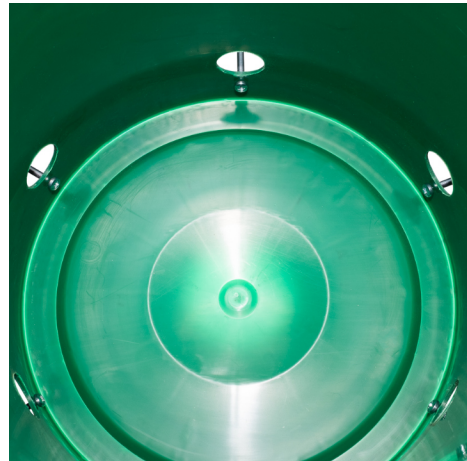
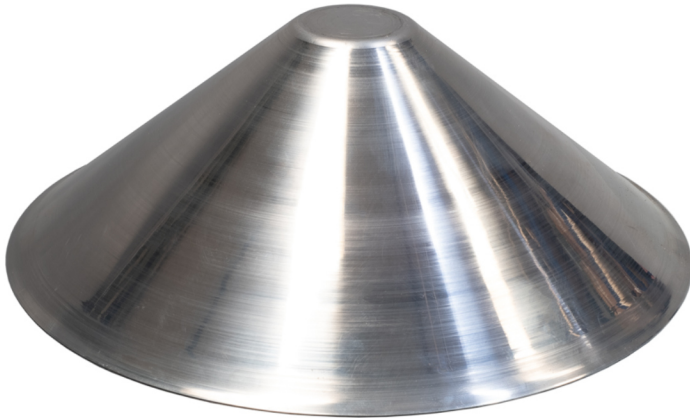
When the supplementary feeding season ends we strongly recommend removing the feeder. If you do leave the feeder in situ please ensure it has been emptied and cleaned, this will prevent the encouragement of squirrels and rats which could result in damage to the feeder.



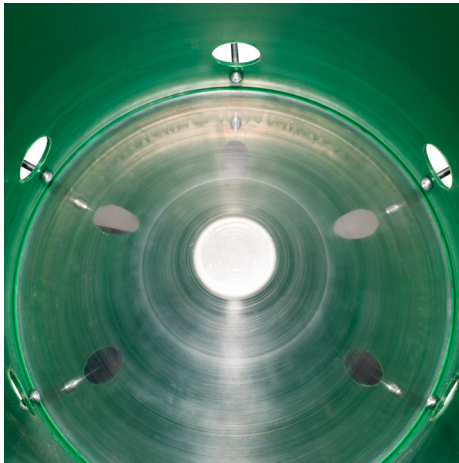
# PERDIX<sup>®</sup> Feeder Cone Fitting Instructions



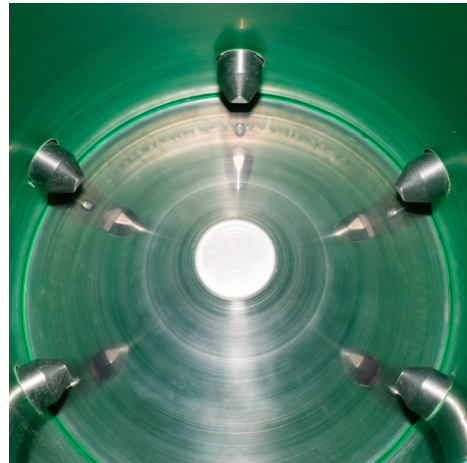
View Product



1. For both the Farmland and Game Bird Feeder fit the port bolts from the inside out.



2. Then place the cone into the feeder, making sure it sits flush with the base and is not resting on any bolt heads.



3. You can now fit the ports and tighten the wing nuts up to secure the ports.



4. The feeder can now be filled with seed.

If you are retro-fitting the feeder cone then simply loosen of the wing nuts enough so that the ports can be withdrawn.

Once withdrawn please follow the instructions from figure 2.



Visit our site

PERDIX Wildlife Supplies. Unit 1 Hatton Rock Business Park,  
Hatton Rock, Stratford-Upon-Avon, CV37 0BX. UK  
Tel: +44 (0)1789 336123 [www.perdixwildlifesupplies.com](http://www.perdixwildlifesupplies.com)



Please Recycle