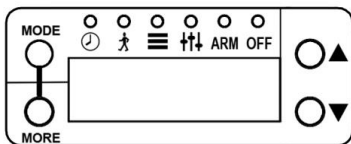




## Manual for Cuddeback Cameras with Advanced User Interface



Manual Number 3.0.1

### **READ THIS MANUAL**

---

Cuddeback cameras are easy to use and intuitive but there are many features that require explanation. We recommend you read this manual to familiarize yourself with Cuddeback's advanced features.

## **Make Your Camera Better**

---

We never stop improving our products. Firmware updates improve your camera with enhanced performance and new features. See page 26 for instructions.

## **Win a Cuddeback Photo Contest**

---

Enter Cuddeback's Photos-of-the-Month contest. Every month we give away 6 free Cuddeback cameras. Submit your favorite Cuddeback photo at [Cuddeback.com/contest](http://Cuddeback.com/contest). Any Cuddeback picture can win and you can enter as often as you like.

This manual is organized into 3 sections

### **Part 1—Camera User Interface**

This section explains how to use the camera controls.

### **Part 2—Field Deployment**

This section explains best practices for deploying and maintaining the cameras.

### **Part 3 - Help & Support**

Look here for help and support.

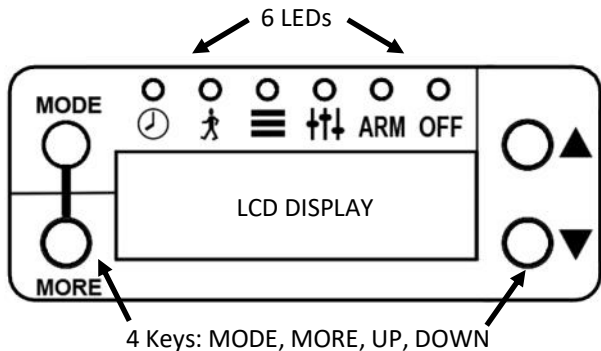
### **Cuddeback.com**

For more information on Cuddeback products visit our website at [Cuddeback.com](http://Cuddeback.com)

## PART 1 - CAMERA USER INTERFACE

---

The Advanced User Interface has 3 sections: LCD Display, Keys, LEDs.



The **LEDs** indicate the current operating mode of the camera. Press the **MODE** key to change the operating mode. The corresponding LED will light to show what mode is enabled.

- **CLOCK**—displays and sets date and time
- **TEST**—enables walk test & diagnostic features

- **COMMANDS**—access to various commands
- **SETTINGS**—programs camera operating parameters
- **ARM**—enables the camera to detect activity and take pictures
- **OFF**—turns the camera off

When a mode is displayed press the **MORE** key to access additional menus for each mode.

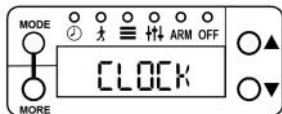
Press the **UP** and **DOWN** keys to alter the setting of the displayed activity.

*Note*—in this manual the text **UP/DOWN** means you can press **UP** or **DOWN**.

## **CLOCK mode**

---

Setting the clock will demonstrate the functionality of the user interface.



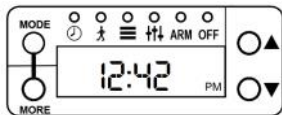
Press MODE until the CLOCK LED is illuminated.

CLOCK will be briefly displayed then the current time will be displayed. Press MORE and the date will be displayed. Press MORE again and the time will be displayed.

### **Set the Time**

---

With the time displayed press the UP or DOWN key.



The hour will flash indicating you can change the hour. Press UP/DOWN as needed to set the hour.

Press MORE to switch to minutes. The minutes will begin to flash. Press UP/DOWN to set as desired.

When the correct time is set press MORE to exit the time setting.

## Set the Date

---

*Note - date is displayed in Month-Day-Year format.*

With the date displayed press the UP or DOWN key.

The month will flash indicating you can change the month. Press UP/DOWN as needed to set the month.

Press MORE to switch to day. The day will begin to flash. Press UP/DOWN to set as desired.

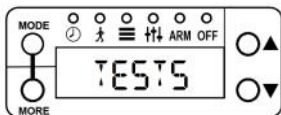
Press MORE to switch to year. The year will begin to flash. Press UP/DOWN to set as desired.

When the correct date is set press MORE or MODE to exit the date setting.

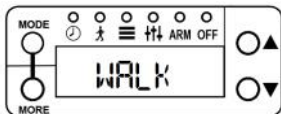
## TEST mode

---

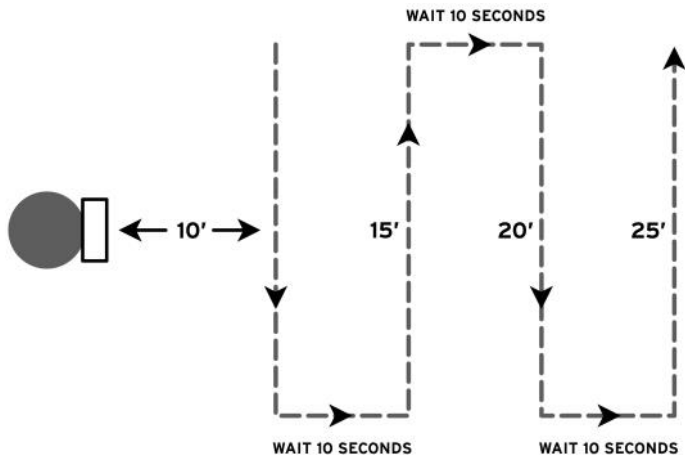
Press MODE until TESTS is displayed.



After a moment WALK will be displayed.



When WALK is enabled the RED LED (inside the flash LEDs) will illuminate when a subject is detected. Walk back and forth (not towards) the camera to verify the detection zone.



Press MORE to display additional test options. See **Part 3 - Help & Support** section for instructions on how to use these functions to troubleshoot and test your camera.



## COMMANDS mode

---

Press MODE until COMMANDS is displayed.

After a moment BATTERY will be displayed.

Press MORE to display additional COMMANDS.

When a COMMAND is displayed press UP/DOWN to activate as required.

### 1. Battery

---

Battery level is displayed as OK, LOW, or DEAD. Press UP/DOWN to display additional battery data:

**BD** - Battery Days is the number of days the camera has been operating on this set of batteries.

**BI** - Battery Images is a count of how many battery images were taken on this set of batteries. The value is calculated based upon how much battery power is used to record an image or video.

*A Battery Image takes into account that a night image requires more power than a day image and a video is actually many images per second. Thus BI will be much higher than the number of images taken. This feature can be used to compare various brands and types of batteries.*

## 2. CLEAR

---

Clear will erase the SD card. All files and images will be deleted. Press UP/DOWN to enable the CLEAR command. You will be asked to CONFIRM. Press UP again to confirm, or press MORE to cancel the clear operation.

*This clear commands formats the SD card. You can use CLEAR to attempt to repair a defective or troubling SD card.*

## 3. CAM ID

---

Assigns a 20 character name to the camera which is printed on the image footer. The current CAM ID will be displayed. Press UP to enter or change the CAM ID. Press MORE to advance to the next position. Press and hold MORE to back up one position. Use the = symbol for space. To erase a CAM ID enter space = into the first position. When you have finished entering characters enter space in all remaining positions or wait for the activity to time out or press MODE.

*This feature can be used to enter a GPS location in the format 44-24-38N 88-06-57W. Obtain the GPS coordinates from a GPS or smart phone.*

#### 4. ASPECT

---

Select the format of the image, either FULL (4x3) or WIDE (16x9). Wide is actually a 4x3 image cropped to 16x9 so we recommend you use FULL setting.

#### 5. ZONE

---

This setting should match the position of the front panel Zone Control (*for cameras with Zone Control*). Set to WIDE if the Zone Control Shutter is down. Set to CENTERED if the Zone Control Shutter is up or if your camera does not have Zone Control.

#### 6. IR MODE (LED cameras)

---

Configures a LED camera's night illumination/exposure mode.

**CLOSE** - use in forest and where animals are usually within 25 feet. This mode creates best image quality.

**FAR** - use in more open spaces where game is further from camera. This mode has longer illumination range.

**FIELD** - use this mode in food plots and fields. It optimizes exposure for wide open areas.

## **6. STRB POWER** (flash cameras)

---

Configures the strobe camera's flash/exposure mode. If images are too bright lower the setting. If the images are too dark raise the setting.

**INDOORS** - for use when the camera is indoors to prevent overexposing the image.

**CLOSE** - use when subjects will be within 10 feet of camera.

**FAR** - use when animals are further then 10 feet from camera. This is generally the best setting to use.

## **7. IMAGE SZ**

---

This sets the size of images. Select 5MP or 20MP images. We recommend 5MP images as they are excellent quality and relatively small file size. 20MP images can generate a smoother looking image.

## **8. LAPSE SZ**

---

This sets the size of Time Lapse images. Select 1MP, 5MP, or 20MP. 1MP images are small size and more can fit on an SD card. You may want to select 1MP if Time Lapse is set to 1 minute or less.

## 9. DST MODE

---

Daylight Savings Time. USA time schedule.

OFF - camera does not use Daylight Savings Time.

AUTO - camera automatically changes the time in spring and autumn for DST.

## 10. STATS

---

Displays camera's historical statistics. Press UP/DOWN to view:

*Activation Date* is the day the warranty begins. It is set automatically when batteries are installed.

*Lifetime Days* is how many days the camera has operated.

*Run Days* is how many days the camera has been armed.

*Lifetime Images* is how many images the camera has taken.

*Lifetime Flash Images* is how many flash images the camera has taken.

## 11. MODEL

---

Displays camera's model number.

## 12. F/W VER

---

Displays camera's firmware version. Press UP/DOWN to see additional version information.

## 13. LOAD F/W

---

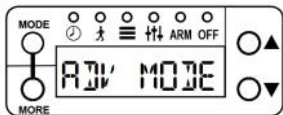
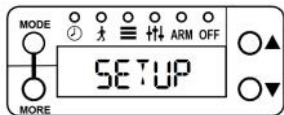
Use to update the camera's firmware from an SD card. Refer to section ***Firmware*** for more details.



## SETTINGS mode

---

Press **MODE** until SETTINGS is displayed. This is where you program the camera settings.



The current SETUP mode will be displayed. Use UP or DOWN to select 1 of 3 operating modes :

**EZ** - Easy Mode has fewer features and is easy to use.

**ADV** - Advanced Mode allows programming separate settings for day & night.

**SUR** - Surveillance Mode optimizes the camera for surveillance operation. See [Surveillance Mode section](#) on page 20.

After selecting the setting mode press **MORE** to continue to the settings.

## **EZ MODE settings**

---

EZ Mode allows simple setting of basic commands. These basic commands will be adequate for most users. When EZ Mode is enabled 2 settings are available (CAM DELAY & VIDEO).

Press UP/DOWN to change the displayed setting. Press MORE to advance to the next setting.

### **1. CAM DELAY**

---

This is the delay between images. Settings are FAP (*Fast-as-Possible, which is about 2 seconds*) to 1 hour. Press UP/DOWN to select.

### **2. VIDEO**

---

Press UP/DOWN to select the length of the video or OFF if you don't want videos recorded.

*The camera will record an image first and then record the videos.*



## **ADVANCED MODE settings**

---

ADVANCED Mode allows more versatility and allows different settings for day and night. Using Advanced mode you set any combination of images, time-lapse, and video for day and night.

Press UP/DOWN to change the displayed setting.  
Press MORE to advance to the next setting.

### **DAY Settings**

---

**D/ DELAY** - (OFF to 1 Hour). OFF means the camera will not take a motion activated image.

**D/ IMAGE** - (OFF, 1, 2, 3, 4, 5). Sets number of images that will be taken with each detection. OFF means the camera will not take a motion activated image.

**D/ VIDEO** - (OFF, 10, 20, 30 seconds). OFF means the camera will not record a motion activated video.

**D/ LAPSE** - (OFF, 10 seconds to 24 hours). Set the time lapse interval.

## **NIGHT Settings**

---

**N/ DELAY** - (OFF to 1 Hour). OFF means the camera will not take a motion activated image.

**N/ IMAGE** - (OFF, 1, 2, 3, 4, 5). Sets number of images that will be taken with each detection. OFF means the camera will not take a motion activated image.

**N/ VIDEO** - (OFF, 10, 20, 30 seconds). OFF means the camera will not record a motion activated video.

**N/ LAPSE** - (OFF, 10 seconds to 24 hours). Sets the time lapse interval.

## Cuddeback Dual Flash

---

The Dual Flash has 3 additional night settings that select which illumination method to use, either RED IR (850nm LEDs) or BLACK IR (940nm LEDs).

**N/ I LED** - selects which LEDs to use for images

**N/ V LED** - selects which LEDs to use for videos

**N/ L LED** - selects which LEDs to use for time-lapse

**IR** takes better images with longer illumination range. **Black IR** has no visible glow but less illumination range. We recommend IR for images and BLACK IR for videos.

## **SURVEILLANCE MODE**

---

Surveillance mode is a simple way to setup a camera for surveillance without having to program many settings.

Camera will record all activity. Camera Delay is set to FAP (fast-as-possible).

1. All images & videos are saved to the SD card. If the SD card is full the oldest images and video are erased to make room for new images & video.
2. Only 2 settings need to be programmed under the SETTINGS mode:

**IMAGES** - (OFF, 1, 2, 3,4, 5) is the number of images to record.

**VIDEO** - (OFF, 10, 20, 30 seconds) is the length of the video.

## **ARM (ARM Mode)**

---

Press **MODE** until ARMING is displayed. This arms the camera so it will begin taking images when activity is detected. When ARM is enabled a 30 second count-down timer is displayed. When the count reaches 0 the camera will arm.

## **SD Card Check**

---

The camera can be used without an SD card. But if a SD card is not detected the warning CHECK SD will be displayed when the camera is armed.

## **Auto Arm**

---

If the camera is left in any state, other than OFF, the camera will automatically arm in 5 minutes. This prevents you from failing to activate the camera.

## **OFF (OFF mode)**

---

Two steps are required to turn the camera off. Press **MODE** until OFF is displayed. After a moment CONFIRM will be displayed. Press UP/DOWN to confirm and the camera will turn off.

When OFF the camera will not take images nor will it auto-arm. Set the camera to off when transporting or storing the camera. It is good practice to remove batteries when the camera is not going to be used for 1 month or more.

## **NO CARD mode**

---

Cuddeback cameras can be used without a SD card where images will be saved in 100MB of internal memory, which can hold about 100 images. Images saved in internal memory must be transferred to an SD card to retrieve them. Images will automatically be transferred to the SD card when the camera detects an SD card. To force the images to transfer cycle through the Armed Info screen options as explained in the ARMED INFO section (next page).

## ARMED INFO - Checking a Camera

---

You do not have to turn the camera off to check a camera. To check a camera press UP to enable *Armed Info* which temporarily suspends arm mode. Press UP/DOWN to display camera status as follows.

**BATTERY LEVEL** - display battery condition

**SD IMAGE** - number of images on SD card\*

**SD VIDEO** - number of videos on SD card\*

**SD FREE** - available space on SD card\*

**IM IMAGE** - number of images on Internal Memory\*\*

**IM FREE** - available space on Internal Memory\*\*

**WALK** - enables walk test (LED illuminates with activity)

**ARM** - arms the camera

*\*Only appears if a SD is installed.*

*\*\*Only appears if a SD card is not installed.*

After you are finished you can rearm the camera by press UP until ARM is displayed, or press MODE until ARMING appears.

## Image Footer Icons

---

The following icons are imprinted on the footer of a Cuddeback image.

**Moon Phase** - the moon phase at the time the image was taken.



**Flash Mode** - the type of flash used to take the image. An colored icon will indicate the flash type: Black Flash (black), IR (red), strobe (white), or Day (sun).



**Burst Mode** - if burst mode was enabled this icon will indicate the position in the burst sequence as a letter a thru e.



**CAM ID** - if camera ID is programmed it will be imprinted.

**DATE / TIME** - date and time is always imprinted on the image in 12 hour AM/PM format.



## SD Card Folders & Files

---

### **Motion Activated Images:**

Folder: SD:\\DCIM\\100CUDDY

File type: I\_\_12345.jpg

### **Time Lapse Images:**

Folder: SD:\\DCIM\\200CUDDY

File type: L\_\_12345.jpg

### **Videos:**

Folder: SD:\\DCIM\\300CUDDY

File type: V\_\_12345.m4v

### **CuddeLink Images\*:**

Folder: SD:\\DCIM\\400CUDDY

File type: T\_\_12345.jpg

### **Help File:**

Folder: SD:\\

File: Cuddeback Help.html

*\*CuddeLink folders and files only pertains to CuddeLink cameras. Refer to CuddeLink manual.*

## **FIRMWARE UPDATES KEEP YOUR CAMERA HAPPY**

---

We never stop improving our products. Firmware updates improve your camera with enhanced performance and new features. We strongly recommend you visit our website once a year to check for firmware updates. Updating your Cuddeback camera firmware is a 2 step process: 1) retrieving firmware from the Cuddeback website, and 2) loading the firmware onto your camera.

### **How to retrieve firmware updates:**

- a. Visit our website and check if new firmware is available. Visit [Cuddeback.com/update](http://Cuddeback.com/update) and follow onscreen instructions.
- b. Use our Trophy Room Windows PC program which will automatically inform you when new firmware is available. You can download Trophy Room at [cuddeback.com/TrophyRoom](http://cuddeback.com/TrophyRoom).
- c. Register your camera at [cuddeback.com/register](http://cuddeback.com/register) and opt-in to our email announcements. We will email you new firmware when it is available.

### **Loading firmware onto your Cuddeback camera:**

- a. Copy the firmware file to your SD card.

- b. Insert the SD card into your Cuddeback camera.
- c. Press MODE until COMMANDS LED is on.
- d. Press MORE until LOAD F/W is displayed.
- e. Press UP to begin. CONFIRM will be displayed. Press UP to confirm.
- f. DO NOT REMOVE THE SD CARD until the clock time is displayed.
- g. The LCD display will display BUSY and the LEDs will illuminate. When finished the time will be displayed and you can remove the SD card.
- h. You can use the same SD card to update all your Cuddeback cameras.

**You can use this same firmware file to update all recent Cuddeback cameras.**

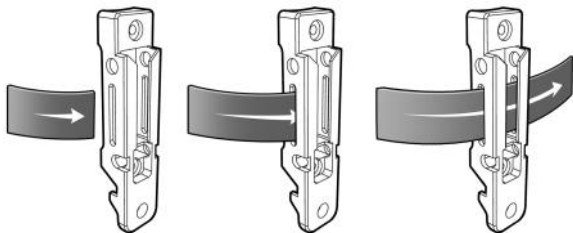
**You do not need to download a firmware file for each camera model.**

## PART 2 - FIELD DEPLOYMENT

---

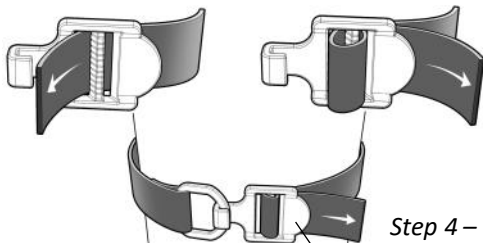
### Strap Use and Assembly

*Step 1 – Route strap through bracket.*



*Step 2 – Insert strap through buckle as shown.*

*Note the hook is facing out.*



*Step 3 – Loop strap and insert through buckle as shown.*

*Step 4 – Pull tight.*

*Step 5 – Lift tab to loosen strap.*

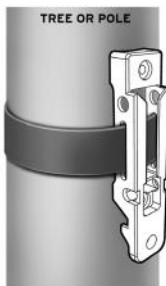
## Mounting

---

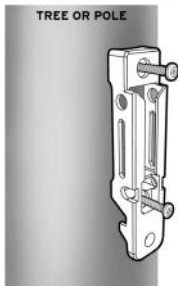
Genius mount is more versatile than strapping the camera to a tree. The Genius mount is easy to attach to a tree and the camera can be quickly attached and removed without altering the camera aim and alignment. You can strap or screw the Genius mount to a tree.



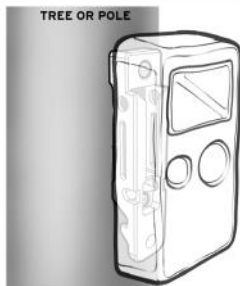
**GENIUS MOUNT**



**STRAPPED ON**



**SCREWED IN**

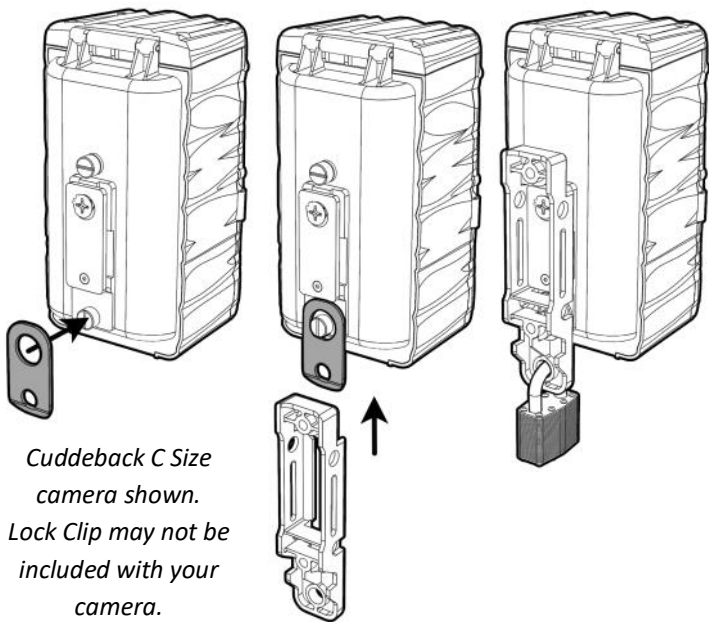


**WITH CAMERA**

## Locking the Camera with Padlock

---

Genius mount allows the camera to be locked to the mount. When the mount is screwed to a tree this deters theft. Padlock not included with camera.



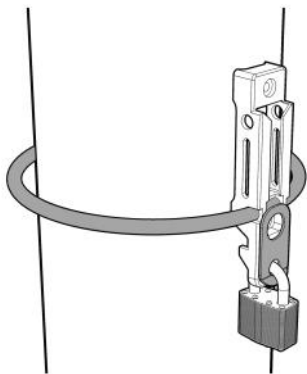
*Cuddeback C Size camera shown. Lock Clip may not be included with your camera.*

## Locking the Camera with Cable Lock

---

Genius mount allows the camera to be cable locked to the tree. This method can be used to secure your camera when you cannot screw the mount to a tree.

*Size 5/16 cable lock required. Cable Lock provided by others. Also available at [Cuddeback.com](http://Cuddeback.com).*

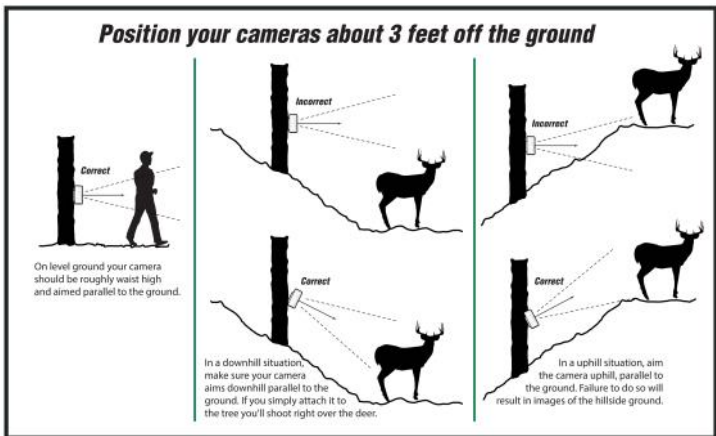


*For clarity the camera is not shown.*

*Cable locking can also be used with a padlock, but a padlock is not required when using the cable lock.*

## Setup Tips

- Install camera at body height of target animal, about 3 feet for deer.
- Aim camera straight and level to ground.
- Remove debris and foliage from in front of camera.
- Ideal placement is 10 to 20 feet from where game is expected to be.

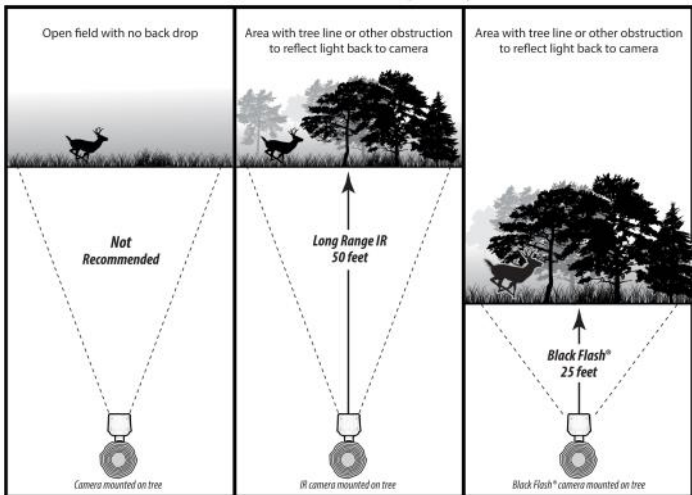




## Using the Camera in Fields

It is difficult to obtain good images when a camera is facing into open fields and food plot. The reason is there are not any trees or objects to reflect light back to the camera. Here are some tips for field use.

- Set the camera higher off the ground to improve illumination. We recommend 4 feet.
- Set the **IR MODE** to **FIELD**. This will optimize illumination for open fields. See [IR Mode on page 11](#) for details.



## Detection Range

---

The motion sensor detects the temperature difference between the air and the animal. Detection range varies with animal size, movement speed, air temperature and the heat of the animal.

1. Detection range will be reduced in hot temperatures (80° F or over 26° C ).
2. Animals walking directly towards the camera may not be detected until they are very close (10 feet) to the camera.
3. Animals with thick hair (deer in winter) will be harder to detect than animals with a thin summer coat. This can occasionally result in reduced detection range in winter.
4. The larger the animal the further away it can be detected. For example, a deer may be detected beyond 50 feet, but a fox may only be detected to 25 feet.
5. A moving animal is detected better than stationary animals. A small flying bird may be detected because of wing movement and speed.
6. An animal standing in front of the camera may not be detected until it moves.

## Using the Camera in Cold Conditions

---

Be aware of these things if you use your camera in extreme cold (below 32° F or 0° C).

1. Battery life may be reduced by 50% or more.
2. Night illumination range may be reduced because cold batteries typically cannot deliver the same amount of power to the LEDs as warm batteries.
3. Flash cameras are not as affected by cold as much as LED based cameras are.
4. We recommend you use a longer delay, around 30 seconds or more, to give the batteries a rest period.
5. We recommend you do not use videos or limit video length to 10 seconds. If you want to record videos we recommend you use lithium batteries in cold conditions.
6. Using CuddePower to operate the camera with additional batteries will greatly improve cold weather performance and battery life. See [Cuddeback.com](http://Cuddeback.com) for details.

## Checking a Camera in the Rain

---

Cuddeback cameras are weather proof but checking a camera in rain can expose the camera electronics to water. Rain, water and snow are your camera's enemy. A drop of water on the SD card will transfer that water directly into the electronics. If at all possible avoid deploying and checking the camera in the rain. If you must then we recommend you follow these guidelines.

1. Dry SD card before inserting into camera.
2. Do not let water get into the battery compartment.
3. Do not let water get into the SD slot.
4. If practical use an umbrella when checking cameras in the rain.
5. Bring a towel with you to dry the camera, SD card, batteries, and your hands.

## Understanding Battery Life

---

It is impossible to predict exactly how long batteries will last in a camera. Depending on usage and other factors you may get as long as 12 months on a set of batteries or only weeks. Here are some facts that will help you understand battery life.

1. Higher quality batteries last longer. We recommend only Rayovac, Energizer, and Duracell brands.
2. Older batteries will generally have less power than newer batteries. Batteries purchased many months ago may not last as long as batteries purchased recently.
3. Temperatures below 32° F (0° C) may reduce battery life 50% or more.
4. The more images taken the shorter the battery life will be.
5. Video consumes more power than still images.
6. Night images require considerably more power than day images.
7. Night video requires considerably more power than day video.

8. Night illumination range will be reduced as battery power weakens.

You can maximize battery life by using the camera delay and video settings wisely.

1. A short day delay (FAP to 5 seconds) will deplete batteries more quickly than a longer delay (15 seconds to 1 minute).
2. Using shorter video length (10 seconds) will extend battery life.
3. At night a longer delay (15 second of more) will extend battery life.
4. Minimizing burst mode will extend battery life (select 1 or 2 images).

### **Recommendations to maximize battery life**

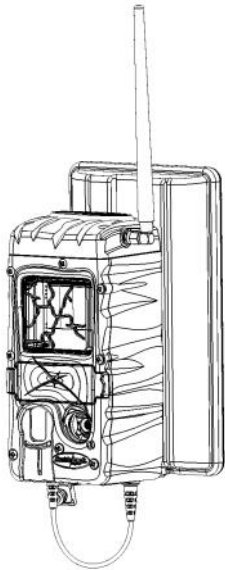
**Trails and Scrapes.** On a trail or scrape a FAP or 5 second delay is okay to use because trails typically do not have a lot of activity (compared to feeders and food plots).

**Feeders.** A short delay on a feeder will generate a lot of images and can deplete batteries quickly. Do you really need a 5 second delay to capture dozens of

images of the same animal? A delay of 15 seconds to 1 minute will extend battery life and still capture all the deer.

**Food Plots.** A short delay is typically okay as deer will be moving around and you don't want to miss any. However, FAP can deplete batteries quickly if a deer remains feeding in front of the camera. A 5 or 15 second delay may be a better choice to extend battery life.

*Cuddeback offers various battery packs and solar powered batteries to allow Cuddeback cameras to operate longer or indefinitely without changing batteries. Visit [Cuddeback.com](http://Cuddeback.com) for details.*



## PART 3 - HELP & SUPPORT

---

If you suspect your camera is not functioning correctly follow these steps.

Press MODE until TESTS is displayed. Press MORE to view the available test features. Press UP to run a test.

**WALK** - (Detector Test) If you suspect the camera is not detecting animals place the camera in WALK. Walk in front of the camera. The red LED will illuminate if it detects you.

**RESET** - Press UP to reset the camera to factory defaults. It is good practice to reset a camera if you think the camera is not functioning correctly.

**BATTERY LEVEL** - Displays the *voltage level* of the batteries. If LOW or DEAD is displayed you should replace the batteries. Press UP to display Battery Images (BI) and Battery Days (BD).

**BATTERY LOAD** - Tests the *current capacity* of the battery. Press UP to run the test which will display the % of *current capacity* in the battery. This test is more accurate than the Battery Level voltage test. If the reading is below 50% you should replace the



batteries.

**FILTER** - Activates the camera's filter mover to toggle from night to day positions. If your night images are not correct this test is recommended.

**IR** - Activates the camera's illumination LEDs. Observe the LEDs to check if they illuminated. For Black Flash® cameras you will need to use a cell phone camera to see the LEDs.

**SD CARD** - Verifies the camera can read your SD card. If this test fails replace the SD card.

**IMAGE**—Records an image and saves it to the SD card. Use your image viewer (computer or viewer) to check the image.

**VIDEO** - Records a video and saves it to the SD card. Use your video viewer (computer or viewer) to check the video.

**STROBE** - Tests the strobe on a white flash camera. The display will show BUSY for 30 seconds while the strobe charges. Then a 5 second count down will be displayed. When the count reaches 0 the strobe will fire. CAUTION—this light is very bright.

## Troubleshooting Tips

---

**No Images.** If your camera is not taking images verify that the camera is set to about body height of the target animal & is properly aimed. For best performance we recommend positioning the camera within 10 to 25 feet from where animals are expected.

**Not Working.** If the camera is not functioning replace the batteries with brand-new-from-the-store batteries. Over 50% of phone calls we get are resolved with new batteries.

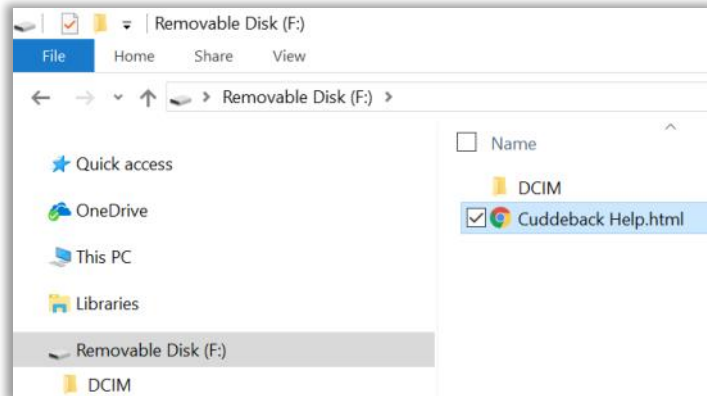
**Not Detecting.** If your camera is not detecting animals use the WALK TEST to verify the motion sensor is working.

**Poor Illumination.** If the night images are dark or poor quality you can move the camera closer to the animals, and verify BATTERY LOAD is 50% or higher. See page 38 for instructions on battery testing.

## Getting Help

---

The easiest way to get help with your Cuddeback camera is to insert the SD card used in the Cuddeback camera into your computer. In the root folder is a file named Cuddeback Help.html. Click this file and your web browser will display a help file. This file will direct you to product manuals, answers to common questions, and view service options.



If the SD card is not available visit [cuddeback.com](http://cuddeback.com) and click **Support** or go to [cuddeback.com/support](http://cuddeback.com/support) for up to date service options and phone numbers.



***[www.cuddeback.com](http://www.cuddeback.com)***

Non Typical, Inc. PO Box 10447 Green Bay, WI 54307

(920) 347-3810