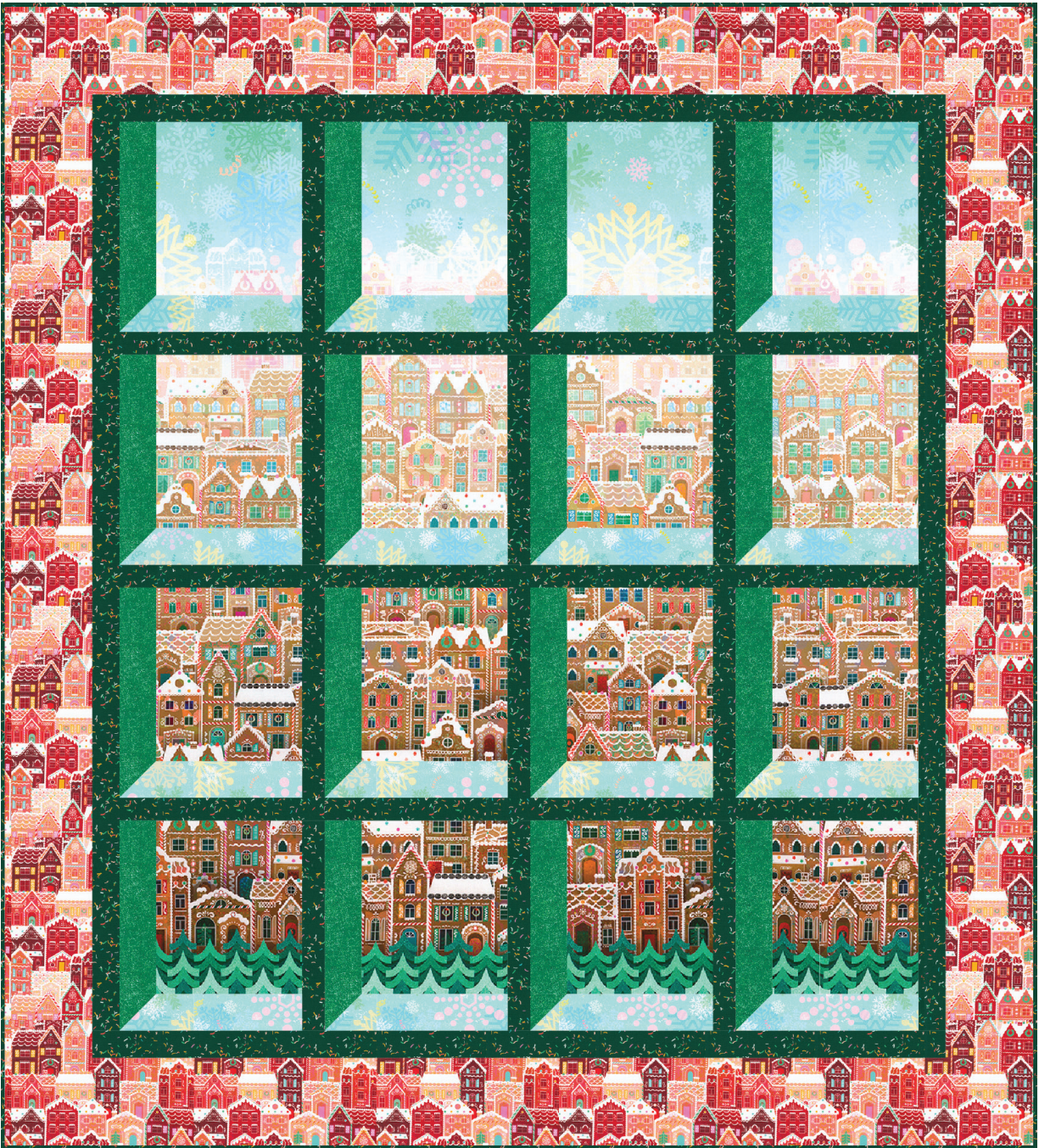


TRANQUIL VIEWS

Designed by Elise Lea for RK
www.robertkaufman.com

Featuring *Wishwell*[®]
Tinsel Town
Vanessa Lillrose & Linda Fitch



Finished quilt measures: 56-1/2" x 62-1/2"





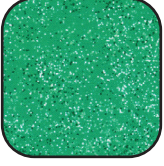

Difficulty Rating: **Beginner**

ROBERTKAUFMAN
F A B R I C S

For questions about this pattern, please email Patterns@RobertKaufman.com.

Fabric and Supplies Needed

Fabric amounts based on yardage that is 42" wide.

Color	Fabric	Name/SKU	Yardage	Color	Fabric	Name/SKU	Yardage
	A	WELD-21011-468 GINGERBREAD	1 yard		D	WELD-21017-63 SKY	1/2 yard
	B	WELD-21018-374 SPRUCE	2/3 yard		E	WELD-21012-99 CHERRY	1-1/2 yard
	C	WELD-21019-240 HOLLY	1/2 yard		Binding	WELD-21015-274 PINE	5/8 yard
<p>Copyright 2022, Robert Kaufman For individual use only - Not for resale</p>				<p>You will also need: 4 yards for backing</p>			

Notes Before You Begin

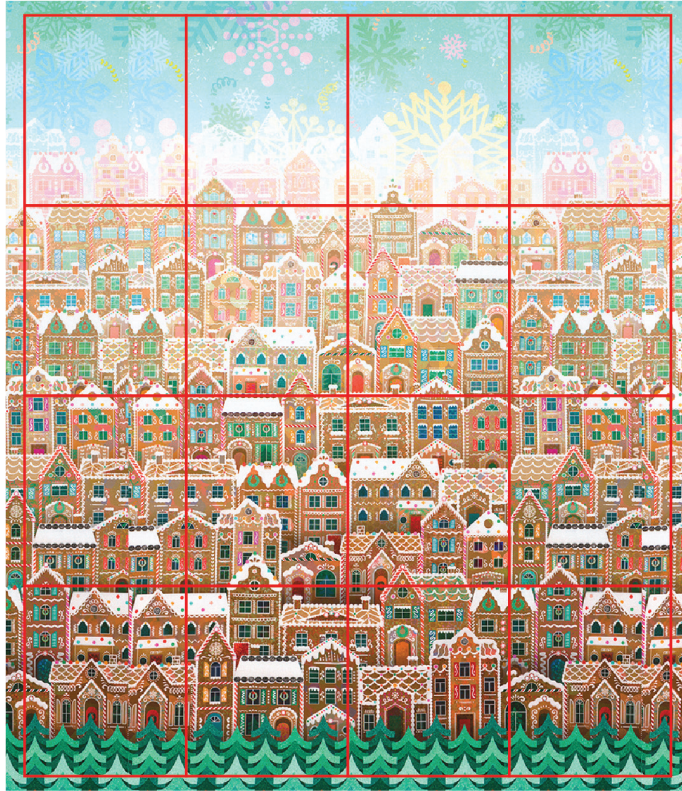
- Read through all of the instructions before beginning.
- All of the seam allowances are 1/4" unless otherwise noted.
- Press seam allowances open unless otherwise noted.
- Width of fabric (WOF) is equal to at least 42" wide.
- Right sides together has been abbreviated to RST.
- Remember to measure twice and cut once!

Cutting Instructions

From Fabric A, cut:

four 8-1/2" x WOF strips. Subcut:
sixteen 8-1/2" x 10" rectangles

Note: Be sure to cut the fabric in a grid, as shown, in order for the print to be aligned once it is pieced to form the 'window.'



From Fabric B, cut:

five 2" x WOF strips. Sew together, end-to-end, then cut:
two 2" x 50-1/4" side inner borders
two 2" x 47-1/4" top/bottom inner borders
seven 1-3/4" x WOF strips. Sew together, end-to-end, then cut:
three 1-3/4" x 44-1/4" row sashing strips
twelve 1-3/4" x 12" block sashing strips

From Fabric C, cut:

one 3" x WOF strips. Subcut:
eight 3" squares for the HSTs
four 2-1/2" x WOF strips. Subcut:
sixteen 2-1/2" x 10" rectangles

From Fabric D, cut:

one 3" x WOF strips. Subcut:
eight 3" squares for the HSTs
four 2-1/2" x WOF strips. Subcut:
sixteen 2-1/2" x 8-1/2" rectangles

From Fabric E, cut:

two 5-1/2" x length of fabric strips. Trim to make:

two 5-1/2" x 53-1/4" side outer borders

From the remaining width of fabric, cut:

four 5-1/2" x WOF strips. Sew together, end-to-end, then cut:

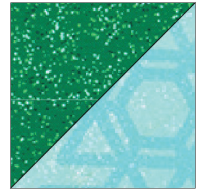
two 5-1/2" x 57-1/4" top/bottom outer borders

From the Binding Fabric, cut:

seven 2-1/2" x WOF strips

Assemble the Half-Square Triangles (HSTs)

Step 1: Pair a Fabric C square with a Fabric D square, RST. Mark a diagonal line on the wrong side of one square. Sew 1/4" away from both sides of the marked line. Cut on the marked line, creating two half-square triangles (HSTs). Press toward the darker fabric. Trim to 2-1/2" square. Repeat to make sixteen C/D HSTs.



Assemble the Window Blocks

**Step 2:** Gather:

one Fabric A rectangle

one C/D HST

one 2-1/2" x 10" Fabric C rectangle

one 2-1/2" x 8-1/2" Fabric D rectangle

Step 3: Sew the Fabric C rectangle to the left of the Fabric A rectangle. Press toward the Fabric C rectangle.

Step 4: Sew the Fabric D rectangle to the right of the HST, noting the orientation of the HST unit. Press toward the Fabric D rectangle.

Step 5: Sew the completed Step 4 unit to the bottom edge of the completed Step 3 unit, as shown. Press.

Repeat Steps 2-5 with all remaining Fabric A rectangles to make a total of 16 Window Blocks. Note: Take care to orient the Fabric A print correctly so that the Fabric A print looks correct in the finished quilt.

Assemble the Quilt



Step 6: Arrange the Window Blocks together as indicated in the Quilt Assembly Diagram. Sew each row together, using 1-3/4" x 12" Fabric B block sashing strips between each block. Press seams toward the sashing. Repeat to make four block rows.

Step 7: Sew the rows together, placing a 1-3/4" x 44-1/4" Fabric B row sashing strip between each row. Press the seams toward the sashing.

Step 8: Sew the side inner borders to the sides of the quilt center. Press toward the borders. Sew the top and bottom inner borders to the quilt center. Press toward the borders.

Step 9: Sew the side outer borders to the sides of the quilt center. Press toward the borders. Sew the top and bottom outer borders to the quilt center. Press toward the borders.

Your quilt top is complete! Baste, quilt, bind and enjoy!

This pattern may be used for personal purposes only and may not be reproduced in any form without the express permission from Robert Kaufman Fabrics. This pattern is not for resale. All patterns, unless otherwise attributed, are © Robert Kaufman Co., Inc. 2005-2022. All rights reserved.