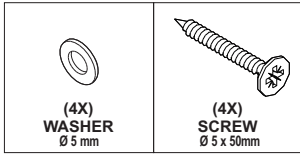
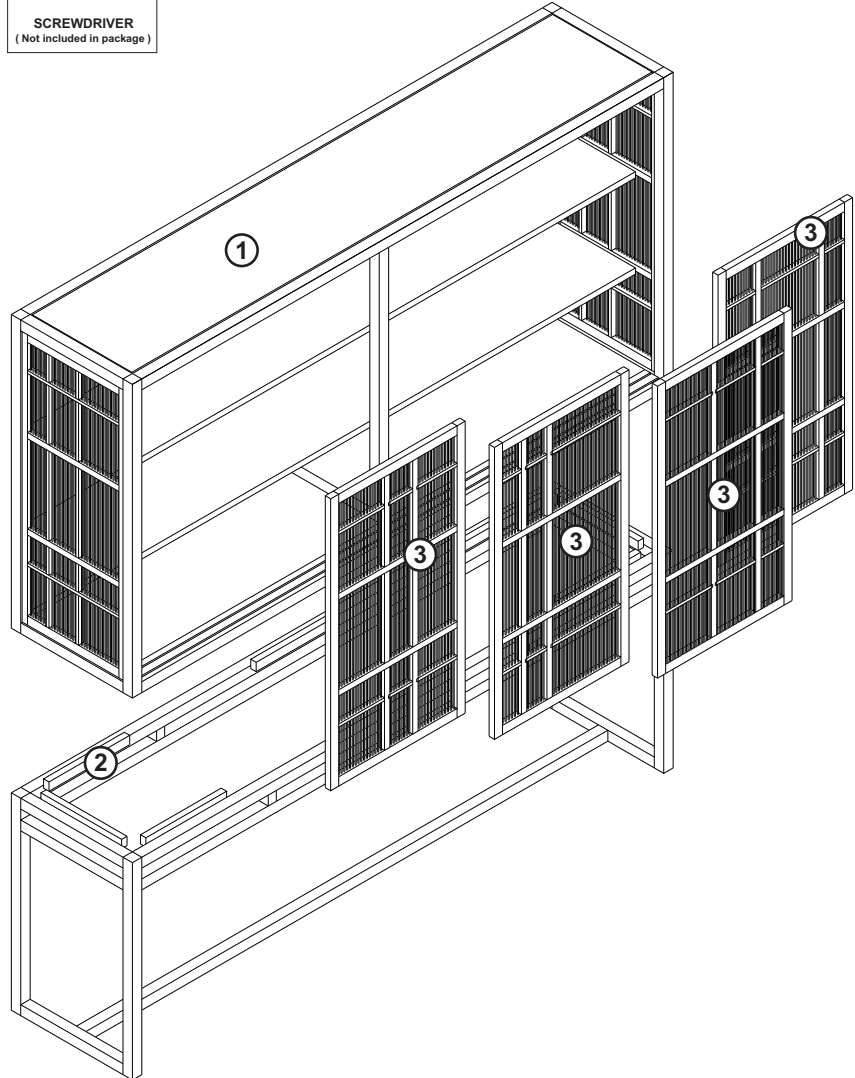
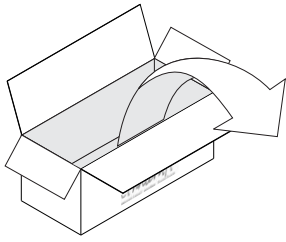


12345 - 12346 OAK BURUNG STORAGE CUPBOARD - BLACK ASSEMBLY INSTRUCTION FOR CUPBOARD INSTALLATION

HARDWARE



TOOL

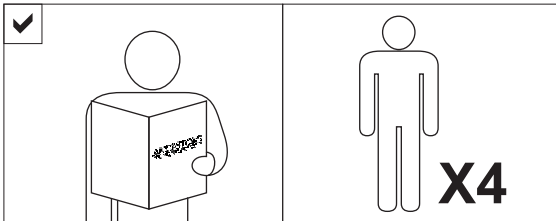


IN YOUR PACKAGE :

ASSEMBLY INSTRUCTION
HARDWARE (AS LISTED ABOVE)

- PARTS TO BE INSTALLED
1. STORAGE CUPBOARD 1pc
 2. LEG 1 set
 3. DOORS 4pcs

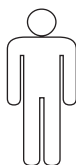
NOTICE



SYMBOLS



DIRECTION



NUMBER OF
PERSONS NEEDED



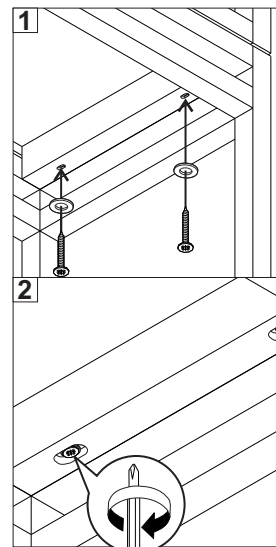
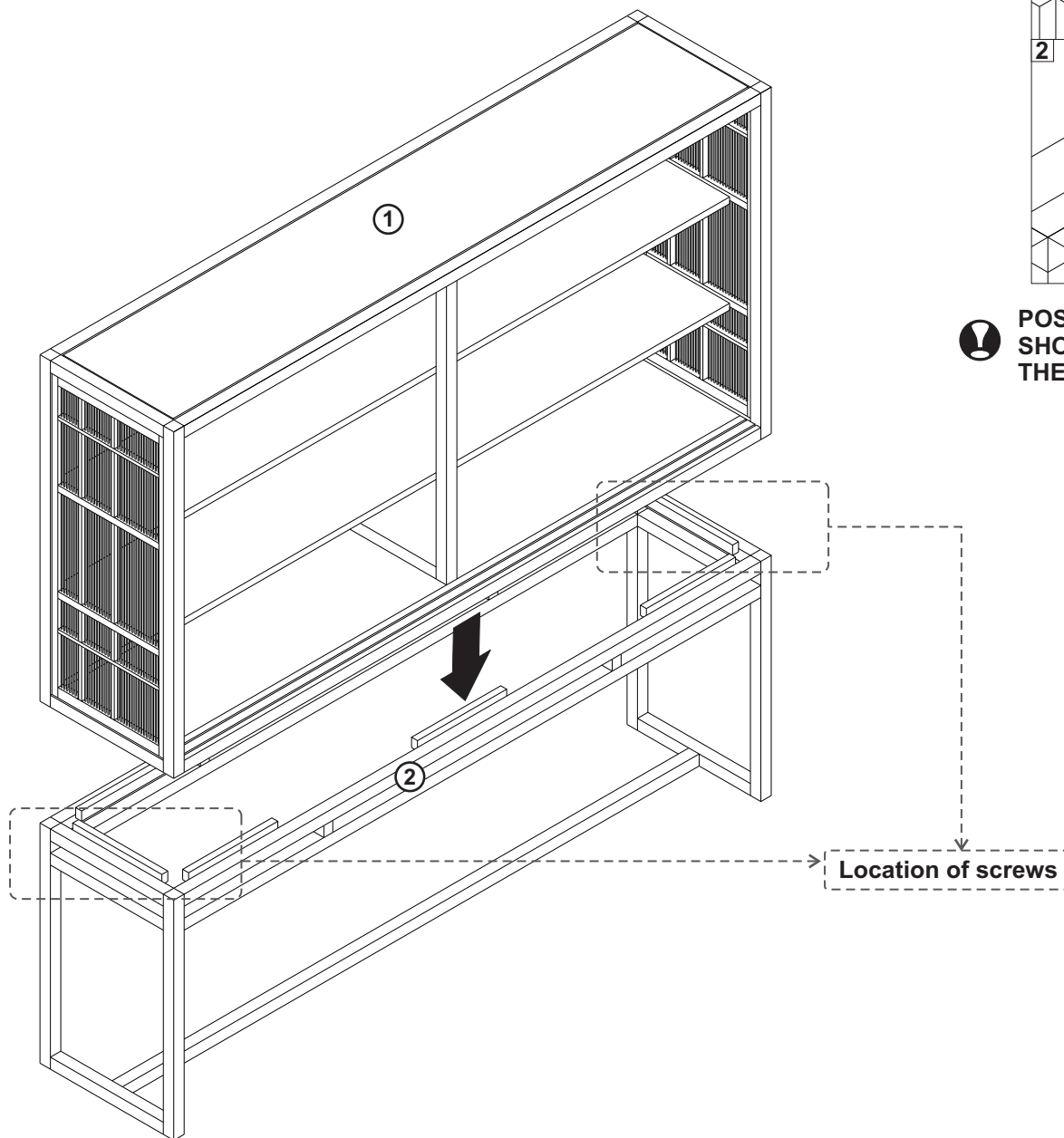
USE SCREWDRIVER
TO TIGHTEN




USE HAND

12345 - 12346 OAK BURUNG STORAGE CUPBOARD - BLACK ASSEMBLY INSTRUCTION FOR CUPBOARD INSTALLATION

A. INSTALLING LEG TO CUPBOARD



 **POSITION OF SCREW
SHOULD BE IN
THE MIDDLE OF HOLE**

Location of screws

 **USE CARPET OR ANY PROTECTIVE SURFACE TO AVOID THE ITEM FROM SCRATCH**

B. INSTALLING THE DOORS

