



*rélyéf*®

decorative pottery tools for clay  
made from bioplastic

---

---

# *rélyéf*

## Who are we?

» Rélyéf is a Czech brand, in business **since 1989**, that creates and produces **pottery tools for decorating** ceramic clay.

## What does Rélyéf make?

» Our portfolio's main products are **stamps and rollers**, but we are constantly growing to include a wider range of tools.

» In order to minimize our environmental impact, our tools are made from **bioplastic**, which is non-toxic, durable, and **biodegradable**.

» Our priority is to bring the **joy of creation** to our customers with **user-friendly** and **technologically precise** tools.



## What makes RÉLYÉF tools special?

- » Rélyéf stamps **do not leave lines on the edges**. Make your impressions as deep as you like without leaving any tell tale borders or messy lines.
- » All our stamps and rollers are designed with a **graduated angle**. This means the tools slightly widen towards the base of the stamp. This makes for **easier cutting** into and release from the clay, which results in **clearer and cleaner impressions**.
- » All our stamps can be used by beginners, children, or disabled people. **No expertise required**.
- » We strive to make eco-friendly products with minimal environmental footprint.





### Courier Alphabet (10 mm)

Order code: **RR-F-Courier-ABC-10-SET**

Size of stamp: 15 x 15 x 30 mm

Weight of set: 65 g

Set contains 27 stamps of Courier alphabet font (height 10 mm), one combined stamp punctuation / diacritic, a wooden rod (8 mm in diameter) and instructions.



### Courier Alphabet - lowercase (10 mm)

Order code: **RR-F-Courier-abcLC-10-SET**

Size of stamp: 15 x 15 x 30 mm

Weight of set: 65 g

Set contains 27 stamps of Courier alphabet font lower case (height 10 mm), one combined stamp punctuation / diacritic, a wooden rod (8 mm in diameter) and instructions.



### Courier Numerals (10 mm)

Order code: **RR-F-Courier-NUM-10-SET**

Size of stamp: 15 x 15 x 30 mm

Weight of set: 45 g

Set contains 18 stamps with numbers and characters of Courier font height 10 mm (6 double as 9), one combined stamp marks / punctuation, a wooden rod (8 mm in diameter) and instructions.



### Courier Alphabet (6 mm)

Order code: **RR-F-Courier-ABC-QTRinch-SET**

Size of stamp: 15 x 15 x 30 mm

Weight of set: 55 g

Set contains 27 stamps of Courier alphabet font height 6 mm (M double as W), one combined stamp punctuation / diacritic, a wooden rod (8 mm in diameter) and instructions.



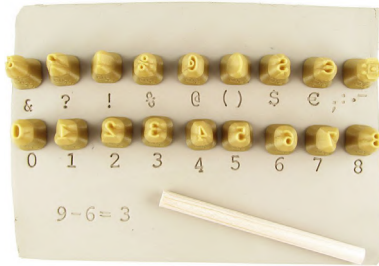
### Courier Alphabet - lowercase (6 mm)

Order code: **RR-F-Courier-abcLC-QTRinch-SET**

Size of stamp: 15 x 15 x 30 mm

Weight of set: 55 g

Set contains 27 stamps of Courier alphabet font lower case (height 6 mm), one combined stamp punctuation / diacritic, a wooden rod (8 mm in diameter) and instructions.



### Courier Numerals (6 mm)

Order code: **RR-F-Courier-NUM-QTRinch-SET**

Size of stamp: 15 x 15 x 30 mm

Weight of set: 36 g

Set contains 18 stamps with numbers and characters of Courier font height 6 mm (6 double as 9), one combined stamp marks / punctuation, a wooden rod (8 mm in diameter) and instructions.



### Courier Alphabet (4 mm) + box

Order code: **RR-F-Courier-ABC-4-SET-BOX**

Size of stamp: 10 x 10 x 25 mm

Size of box: 120 x 45 x 25 mm

Weight of set: 72 g

Set contains 26 stamps of Courier alphabet font height 4 mm (M double as W), one combined stamp punctuation / diacritic, a wooden rod (8 mm in diameter) and instructions.



### Courier Alphabet - lowercase (4 mm) + box

Order code: **RR-F-Courier-abclC-4-SET-BOX**

Size of stamp: 11 x 10 x 25 mm

Size of box: 120 x 45 x 25 mm

Weight of set: 72 g

Set contains 26 stamps of Courier alphabet font height 4 mm (M double as W), one combined stamp punctuation / diacritic, a wooden rod (8 mm in diameter) and instructions.



**Courier Numerals (4 mm) + box**

Order code: **RR-F-Courier-NUM-4-SET-BOX**

Size of stamp: 120 x 45 x 25 mm

Size of box: 120 x 30 x 30 mm

Weight of set: 58 g

Set contains 9 stamps of Courier numbers height 4 mm (6 doubles as 9), 9 stamps of punctuation marks and mathematical symbols, a wooden rod (8 mm in diameter) and instructions.



**Courier Alphabet (26 mm)**

Order code: **RR-F-Courier-ABC-inch-SET**

Size of stamp: 30 x 30 x 30 mm

Weight of set: 105 g

Set contains 26 stamps of Courier alphabet font height 26 mm (M double as W), one combined stamp punctuation / diacritic, a wooden rod (8 mm in diameter) and instructions.



**Lithos Alphabet (10 mm)**

Order code: **RR-F-Lithos-ABC-10-SET**

Size of stamp: 15 x 15 x 30 mm

Weight of set: 65 g

Set contains 25 stamps of Lithos alphabet font height 10 mm (M double as W), one combined stamp punctuation / diacritic, a wooden rod (8 mm in diameter) and instructions.



**Lithos Numerals (10 mm)**

Order code: **RR-F-Lithos-NUM-10-SET**

Size of stamp: 15 x 15 x 30 mm

Weight of set: 45 g

Set contains 17 stamps with numbers and characters of Lithos font height 10 mm (6 double as 9), one combined stamp marks / punctuation, a wooden rod (8 mm in diameter) and instructions.



**Marion Alphabet (10 mm)**

Order code: **RR-F-Marion-ABC-10-SET**

Size of stamp: 15 x 15 x 30 mm

Weight of set: 65 g

Set contains 27 stamps of Marion alphabet font (height 10 mm), one combined stamp punctuation / diacritic, a wooden rod (8 mm in diameter) and instructions.



**Marion Alphabet - lowercase (10 mm)**

Order code: **RR-F-Marion-abcLC-10-SET**

Size of stamp: 15 x 15 x 30 mm

Weight of set: 58 g

Set contains 27 stamps of Marion alphabet font lower case (height 10 mm), one combined stamp punctuation / diacritic, a wooden rod (8 mm in diameter) and instructions.



**Marion Numerals (10 mm)**

Order code: **RR-F-Marion-NUM-10-SET**

Size of stamp: 15 x 15 x 30 mm

Weight of set: 45 g

Set contains 18 stamps with numbers and characters of Courier font height 10 mm (6 double as 9), one combined stamp marks / punctuation, a wooden rod (8 mm in diameter) and instructions.



**Marion Numerals (26 mm)**

Order code: **RR-F-Marion-DIG-Inch-SET**

Size of stamp: approx. 30 x 30 x 30 mm

Weight of set: 45 g

Set contains 9 stamps with digits of Marion font height 26 mm - 1" (6 double as 9), a wooden rod (8 mm in diameter) and instructions.



**Roman Numerals (30 mm)**

Order code: **RR-30-Marion-IVXLCDM-SET**

Size of stamp: approx. 30 x 30 x 30 mm

Weight of set: 40 g

Set contains seven Roman numeral stamps (Marion font, height 26 mm), a wooden rod (8 mm in diameter) and instructions.



**Roman Numerals (30 mm)**

Order code: **RR-30-Marion-IVXLCDM-SET**

Size of stamp: approx. 30 x 30 x 30 mm

Weight of set: 40 g

Set contains seven Roman numeral stamps (Marion font, height 26 mm), a wooden rod (8 mm in diameter) and instructions.



**Greek Alphabet (10 mm)**

Order code: **RR-F-Times-GRK-10-SET**

Size of stamp: approx. 15 x 15 x 30 mm

Weight of set: 57 g

Set contains 24 Greek Alphabet stamps (Times font, height 10 mm), a wooden rod (8 mm in diameter) and instructions.



**Greek Alphabet - lowercase (10 mm)**

Order code: **RR-F-Times-grkLC-10-SET**

Size of stamp: 15 x 15 x 30 mm

Weight of set: 57 g

Set contains 24 Greek Alphabet stamps (Times font, height 10 mm), a wooden rod (8 mm in diameter) and instructions.





### Hebrew Alphabet (10 mm)

Order code: **RR-F-Hebrew-10-SET**

Size of stamp: 15 x 15 x 30 mm

Weight of set: 50 g

Set contains 27 Hebrew Alphabet stamps (height 10 mm), a wooden rod (8 mm in diameter) and instructions.



### Futura Alphabet (10 mm)

Order code: **RR-F-Futura-ABC-10-SET**

Size of stamp: 15 x 15 x 30 mm

Weight of set: 60 g

Set contains 27 stamps of Futura alphabet font (height 10 mm), one combined stamp punctuation / diacritic, a wooden rod (8 mm in diameter) and instructions.



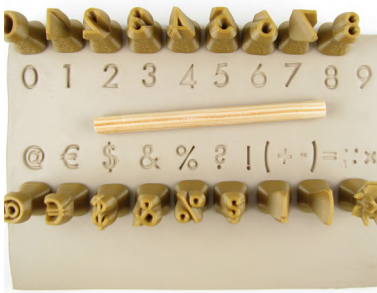
### Futura Alphabet - lowercase (10 mm)

Order code: **RR-F-Futura-abclC-10-SET**

Size of stamp: 15 x 15 x 30 mm

Weight of set: 56 g

Set contains 27 stamps of Futura alphabet font lower case (height 10 mm), one combined stamp punctuation / diacritic, a wooden rod (8 mm in diameter) and instructions.



### Futura Numerals (10 mm)

Order code: **RR-F-Futura-NUM-10-SET**

Size of stamp: 15 x 15 x 30 mm

Weight of set: 42 g

Set contains 18 stamps with numbers and characters of Futura font height 10 mm (6 double as 9), one combined stamp marks / punctuation, a wooden rod (8 mm in diameter) and instructions.



### Tahoma Cyrillic Alphabet (10 mm)

Order code: **RR-F-Tahoma-CYR-10-SET**

Size of stamp: 15 x 15 x 30 mm

Weight of set: 75 g

Set contains 34 stamps of Tahoma Cyrillic alphabet font upper case (height 10 mm), one combined stamp punctuation / diacritic, a wooden rod (8 mm in diameter) and instructions.



### Tahoma Cyrillic Alphabet - lowercase (10 mm)

Order code: **RR-F-Tahoma-cyrLC-10-SET**

Size of stamp: 15 x 15 x 30 mm

Weight of set: 71 g

Set contains 34 stamps of Tahoma Cyrillic alphabet font lower case (height 10 mm), one combined stamp punctuation / diacritic, a wooden rod (8 mm in diameter) and instructions.



### Tahoma Cyrillic Alphabet - outline (10 mm)

Order code: **RR-F-Tahoma-CYR-10-OL-SET**

Size of stamp: 15 x 15 x 30 mm

Weight of set: 77 g

Set contains 34 stamps of Tahoma alphabet outline font upper case (height 10 mm), one combined stamp punctuation / diacritic, a wooden rod (8 mm in diameter) and instructions.





**Celtic Runes (6 mm)**

Order code: **RR-F-Runes-QTRin-SET**

Size of stamp: 15 x 15 x 30 mm

Weight of set: 67 g

Set contains 34 stamps of Runes height 1/4" (6 mm), a wooden rod (8 mm in diameter) and instructions.



**Celtic Runes (13 mm)**

Order code: **RR-F-Runes-Halfin-SET**

Size of stamp: 15 x 15 x 30 mm

Weight of set: 71 g

Set contains 34 stamps of Runes height 1/2" (13 mm), a wooden rod (8 mm in diameter) and instructions.



**Celtic Runes (26 mm)**

Order code: **RR-F-Runes-Inch-SET**

Size of stamp: 20 x 26 x 30 mm

Weight of set: 123 g

Set contains 34 stamps of Runes 1" (26 mm), a wooden rod (8 mm in diameter) and instructions.



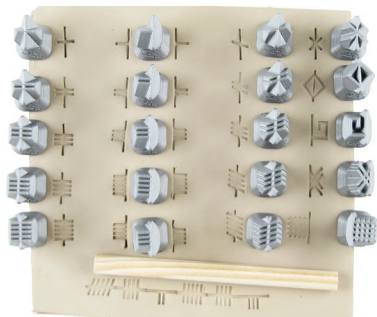
**Runes - Elder Futhark (13 mm)**

Order code: **RR-F-RunesFuthark-Halfin-SET**

Size of stamp: approx. 15 x 15 x 30 mm

Weight of set: 53 g

Set contains 24 stamps of Elder Futhark Runes height 1/2" (13 mm), a wooden rod (8 mm in diameter) and instructions.



### Ogham Celtic Alphabet (13 mm)

Order code: **RR-F-RunesFuthark-Halfin-SET**

Size of stamp: approx. 15 x 15 x 30 mm

Weight of set: 47 g

Set contains 20 stamps (25 characters) of ancient Celtic alphabet Ogham height 1/2" (13 mm), a wooden rod (8 mm in diameter) and instructions.



### Celtic Symbol & Knot mini set No.1 (15 mm)

Order code: **RR-Celtic03-mini-SET**

Size of stamp: 15 x 15 x 30 mm

Weight of set: 30 g

Set contains 10 stamps of Celtic patterns, a wooden rod (8 mm in diameter) and instructions.



### Celtic Symbol & Knot set No.1 (26 mm)

Order code: **RR-Celtic01-SET**

Size of stamp: approx. 30 x 30 x 32 mm

Weight of set: 50 g

Set contains 10 stamps of Celtic patterns, a wooden rod (8 mm in diameter) and instructions.



### Celtic Symbol & Knot set No.1 (50 mm)

Order code: **RR-Celtic02-JUMBO-SET**

Size of stamp: 80 x 40 x 35 mm

Weight of set: 92 g

Set contains four stamps of bees and hexagon, honeycomb roller, a wooden rod (8 mm in diameter) and instructions.



### Celtic Symbol & Knot set No.2 (26 mm)

Order code: **RR-Celtic04-SET**

Size of stamp: 25 x 25 x 30 mm

Weight of set: 50 g

Set contains 10 stamps of Celtic knots and symbols (e.g. Triquetra/Trinity knot), a wooden rod (8 mm in diameter) and instructions.



### Celtic Hearts set No.1 (26 mm)

Order code: **RR-Celtic05-Hearts-SET**

Size of stamp: 30 x 30 x 30 mm

Weight of set: 39 g

Set contains 7 stamps of Celtic heart knots and symbols, a wooden rod (8 mm in diameter) and instructions.



### Celtic Hearts set No.2 (26 mm)

Order code: **RR-Celtic06-Hearts-SET**

Size of stamp: 30 x 30 x 30 mm

Weight of set: 39 g

Set contains 7 stamps of Celtic heart knots and symbols, a wooden rod (8 mm in diameter) and instructions.



### Celtic Tree of Life (60 mm)

Order code: **RR-CelticTree01**

Size of stamp: 55 x 55 x 45 mm

Weight of set: 21 g

Set contains one stamp of Celtic Tree of Life, a wooden rod (8 mm in diameter) and instructions.



### Celtic Tree of Life No.2 (60 mm)

Order code: **RR-CelticTree02**

Size of stamp: 55 x 55 x 45 mm

Weight of set: 21 g

Set contains one stamp of Celtic Tree of Life, a wooden rod (8 mm in diameter) and instructions.



### Celtic Tree of Life No.3 (60 mm)

Order code: **RR-CelticTree03**

Size of stamp: 55 x 55 x 45 mm

Weight of set: 21 g

Set contains one stamp of Celtic Tree of Life, a wooden rod (8 mm in diameter) and instructions.



### Mini Trees set (30 mm)

Order code: **RR-CelticTreesMini-01-SET**

Size of stamp: 30 x 30 x 30 mm

Weight of set: 25 g

Set contains 3 stamps of Celtic Trees of Life, a wooden rod (8 mm in diameter) and instructions.





### Celtic Butterflies set No.1 (10 - 50 mm)

Order code: **RR-CeltBtrfl-SET**

Size of stamp: various (9 mm - 48 mm)

Weight of set: 24 g

Set contains three stamps of Celtic butterflies, a wooden rod (8 mm in diameter) and instructions.



### Animals & Footprints set (30 mm)

Order code: **RR-FootTracks01-SET**

Size of stamp: approx. 20 x 30 x 30 mm

Weight of set: 55 g

Set contains 10 stamps with motifs of animals and their footprints (cat, deer, dog, boar, crow), a wooden rod (8 mm in diameter) and instructions.



### Birds set (15 mm)

Order code: **RR-Birds01-SET**

Size of stamp: 15 x 15 x 30 mm

Weight of set: 29 g

Set contains 10 stamps of birds, a wooden rod (8 mm in diameter) and instructions.



### Hummingbirds set (30 - 40 mm)

Order code: **RR-HumBrds-01-Full-SET**

Size of stamp: various (30 - 40 mm)

Weight of set: 24 g

Set contains 4 stamps of Hummingbirds, a wooden rod (8 mm in diameter) and instructions.



**Hummingbirds set - outline (30 - 40 mm)**

Order code: **RR-HumBrds-01-Outl-SET**

Size of stamp: various (30 - 40 mm)

Weight of set: 30 g

Set contains 4 stamps of Hummingbirds in two sizes, two facing left and two facing right, a wooden rod (8 mm in diameter) and instructions.



**Lizards set ( 50 - 60 mm)**

Order code: **RR-Lizards01-SET**

Size of stamp: various (50 x 30 - 65 x 40 mm)

Weight of set: 40 g

Set contains 4 stamps of lizards, a wooden rod (8 mm in diameter) and instructions.



**Ants set (10 - 30 mm)**

Order code: **RR-Ants01-SET**

Size of stamp: approx. 11 - 30 mm

Weight of set: 16 g

Set contains 3 stamps of ants, a wooden rod (8 mm in diameter) and instructions.



**Bee & Honeycomb set (30 mm)**

Order code: **RR-Bees01-SET**

Size of stamp: approx. 25 x 25 x 30 mm

Weight of set: 31 g

Set contains four stamps of bees and hexagon, honeycomb roller, a wooden rod (8 mm in diameter) and instructions.





### Spring Animals set (15 - 30 mm)

Order code: **RR-SpringAnimals-01-SET**

Size of stamp: 30 x 20 x 30 mm

Weight of set: 42 g

Set contains 10 stamps of spring/Easter animals (bunnies, sheep, butterflies, chicks and a hen), a wooden rod (8 mm in diameter) and instructions.



### Cats set - outline (20 - 40 mm)

Order code: **RR-Cats01-SET**

Size of stamp: 40 x 30 x 30 mm

Weight of set: 56 g

Set contains 7 stamps of cats made from ecological bioresin, a wooden rod (8 mm in diameter) and instructions.



### Feathers set (50 mm)

Order code: **RR-Feather-01-SET**

Size of stamp: 40 x 30 x 30 mm

Weight of set: 56 g

Set contains 4 stamps of feathers, all made from ecological bioresin, a wooden rod (8 mm in diameter) and instructions.



### Flower-Snail set (18 - 30 mm)

Order code: **RR-FlowerSnail-SET**

Size of stamp: various (20 - 30 mm)

Weight of set: 18 g

Set contains 3 stamps of flower-snail pattern made from ecological bioplastics (various sizes), a wooden rod (8 mm in diameter) and instructions.



### Flower Puzzle set No.1 (11 - 38 mm)

Order code: **RR-RS01Flowers-SET**

Size of stamp: approx. 15 x 20 x 30 mm

Weight of set: 30 g

Set contains 11 stamps with motifs of petals (various sizes), a wooden rod (8 mm in diameter) and instructions.



### Flower Puzzle set No.2 - outline (11 - 38 mm)

Order code: **RR-RS02FlowersOutline-SET**

Size of stamp: approx. 15 x 20 x 30 mm

Weight of set: 28 g

Set contains 9 stamps with motifs of outlined petals (various sizes), a wooden rod (8 mm in diameter) and instructions.



### Flower Puzzle set No.3 (11 - 38 mm)

Order code: **RR-RS03Flowers-SET**

Size of stamp: approx. 15 x 20 x 30 mm

Weight of set: 26 g

Set contains 7 stamps with motifs of curved petals (various sizes), a wooden rod (8 mm in diameter) and instructions.



### Flower Puzzle set No.4 - outline (11 - 38 mm)

Order code: **RR-RS04FlowersOutline-SET**

Size of stamp: approx. 15 x 20 x 30 mm

Weight of set: 27 g

Set contains 8 stamps with motifs of outlined and curved petals (various sizes), a wooden rod (8 mm in diameter) and instructions.



**Flowers set No. 1 (30 mm)**

Order code: **RR-30-Flowers-No1-SET**

Size of stamp: approx.  $\varnothing$  30 x 32 mm

Weight of set: 33 g

Set contains 7 stamps with different patterns of flowers, a wooden rod (8 mm in diameter) and instructions.



**Flowers set No. 2 (30 mm)**

Order code: **RR-30-Flowers-No2-SET**

Size of stamp:  $\varnothing$  30 x 32 mm

Weight of set: 34 g

Set contains 7 stamps with different patterns of flowers, a wooden rod (8 mm in diameter) and instructions.



**Daisies set (15 - 30 mm)**

Order code: **RR-Daisies-SET**

Size of stamp: various (15 - 35 mm)

Weight of set: 19 g

3 stamps of daisies made from ecological bioplastics, a wooden rod (8 mm in diameter) and instructions.



**Spring Flowers set (15 - 30 mm)**

Order code: **RR-SpringFlowers-01-SET**

Size of stamp: 30 x 25 x 30 mm

Weight of set: 29 g

7 stamps of spring/Easter flowers made from ecological bioplastics, a wooden rod (8 mm in diameter) and instructions.



### Art Nouveau Flower Sheet (200 mm)

Order code: **RT-Flower01-8in**

Size of stamp: 200 mm

Weight of set: 72 g

Clay texture sheet/mat of Art Nouveau flower made from ecological bioplastics.



### Flower Mandala set (30 mm)

Order code: **RR-MandalaCircle-SET**

Size of stamp: approx.  $\varnothing$  30 x 30 mm

Weight of set: 34 g

Set contains 8 stamps of circle mandala for creating Slavonic design, a wooden rod (8 mm in diameter) and instructions.



### Mandala Puzzle - Full (11 - 38 mm)

Order code: **RR-MandalaFull-SET**

Size of stamp: approx. 25 x 25 x 30 mm

Weight of set: 35 g

Set contains 11 contour stamps for mandala creation, a wooden rod (8 mm in diameter) and instructions.



### Mandala puzzle - Outline (11 - 38)

Order code: **RR-MandalaOutline-SET**

Size of stamp: approx. 25 x 25 x 30 mm

Weight of set: 34 g

Set contains 11 contour stamps for mandala creation, a wooden rod (8 mm in diameter) and instructions.



### Halloween set (30 mm)

Order code: **RR-Halloween01-SET**

Size of stamp: approx. 30 x 30 x 32 mm

Weight of set: 55 g

Set contains 11 stamps of Halloween patterns, a wooden rod (8 mm in diameter) and instructions.



### Christmas (30 mm)

Order code: **RR-Xmas02-SET**

Size of stamp: various (approx. 30 mm)

Weight of set: 50 g

Set contains 10 Christmas themed stamps (comet, ball, bell, Christmas present, angel, sledge, candles, snowman, Christmas tree and holly) a wooden rod (8 mm in diameter) and instructions.



### Snowflakes set (15 mm)

Order code: **RR-15-SnowFlakes-SET**

Size of stamp:  $\varnothing$  15 x 29 mm

Weight of set: 20 g

Set contains 7 stamps with different patterns of snowflakes, a wooden rod (8 mm in diameter) and instructions.



### Snowflakes set (30 mm)

Order code: **RR-30-SnowFlakes-SET**

Size of stamp:  $\varnothing$  30 x 32 mm

Weight of set: 45 g

Set contains 7 stamps with different patterns of snowflakes, a wooden rod (8 mm in diameter) and instructions.



### House Stamps- Village (30 mm)

Order code: **RR-Houses01-SET**

Size of stamp: approx. 30 x 30 x 30 mm

Weight of set: 32 g

Set contains 7 stamps (houses, fence, tree, streetlight) a wooden rod (8 mm in diameter) and instructions.



### House Stamps - Town (30 mm)

Order code: **RR-Houses02-SET**

Size of stamp: 50 x 50 x 30 mm

Weight of set: 53 g

Set contains 5 stamps (town hall, shop, church, houses, bridge, trees, streetlight, bush) a wooden rod (8 mm in diameter) and instructions.



### Musician Stamps No.1 (30 mm)

Order code: **RR-Musicians01-SET**

Size of stamp: 30 x 20 x 30 mm

Weight of set: 24 g

Set contains 5 stamps of musicians a wooden rod (8 mm in diameter) and instructions.



### Easter Egg Stamps (15 - 30 mm)

Order code: **RR-EasterEggs-01-SET**

Size of stamp: 30 x 25 x 30 mm

Weight of set: 24 g

6 stamps of Easter eggs (1 blank and 1 basket) a wooden rod (8 mm in diameter) and instructions.



### Emoji Puzzle (30 mm)

Order code: **RR-EmojiPuzzle30-SET**

Size of stamp: 30 x 30 x 30 mm

Weight of set: 20 g

Set contains four stamps for creation of custom emojis, a wooden rod (8 mm in diameter) and instructions.



### Emoji set No.1 (15 mm)

Order code: **RR-Emoji15-No1-SET**

Size of stamp: 15 x 15 x 30 mm

Weight of set: 36 g

Set contains twelve emoji stamps, a wooden rod (8 mm in diameter) and instructions.



### Emoji set No.2 (15 mm)

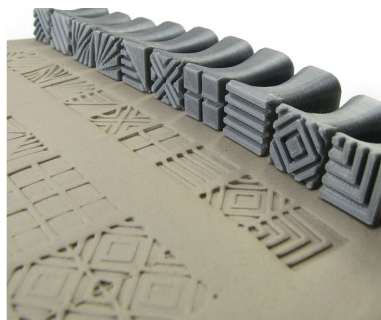
Order code: **RR-Emoji15-No2-SET**

Size of stamp: 15 x 15 x 30 mm

Weight of set: 36 g

Set contains twelve emoji stamps, a wooden rod (8 mm in diameter) and instructions.





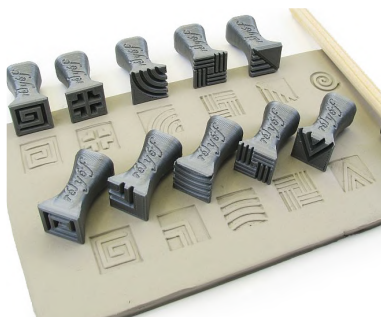
### Square Stamps set No.1 (15 mm)

Order code: **RR-15x15-SET01**

Size of stamp: 15 x 15 x 30 mm

Weight of set: 35 g

Set contains eleven square stamps, a wooden rod (8 mm in diameter) and instructions.



### Square Stamps set No.2 (15 mm)

Order code: **RR-15x15-SET02**

Size of stamp: 15 x 15 x 30 mm

Weight of set: 35 g

Set contains eleven square stamps, a wooden rod (8 mm in diameter) and instructions.



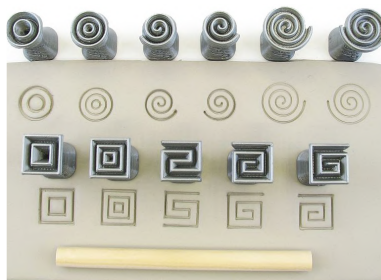
### Square Stamps Pairs set (15 mm)

Order code: **RR-15x15-SET03-Pairs**

Size of stamp: 15 x 15 x 30 mm

Weight of set: 32 g

Set contains ten square stamps, a wooden rod (8 mm in diameter) and instructions.



### Spiral Stamps set (15 mm)

Order code: **RR-15x15-SET04-Spirals**

Size of stamp: 15 x 15 x 30 mm

Weight of set: 35 g

Set contains eleven thin spirals stamps, a wooden rod (8 mm in diameter) and instructions.





### Square Stamps set No.1 (30 mm)

Order code: **RR-30x30-SET**

Size of stamp: 30 x 30 x 32 mm

Weight of set: 75 g

Set contains eleven square stamps, a wooden rod (8 mm in diameter) and instructions.



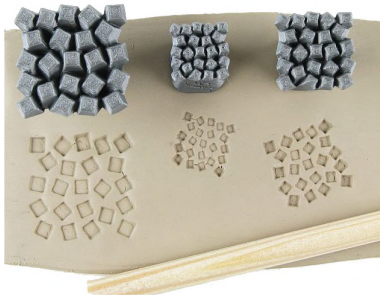
### Dot Stamps set (15 mm)

Order code: **RR-15x15-SET05-Dots**

Size of stamp: 15 x 15 x 30 mm

Weight of set: 33 g

Set contains eleven "dotted" stamps, a wooden rod (8 mm in diameter) and instructions.



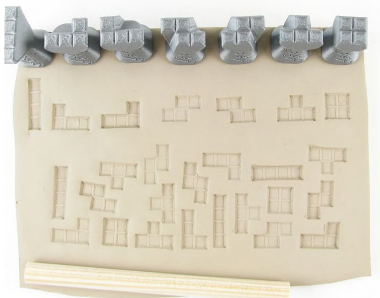
### Square Dot Stamps set (15 - 30 mm)

Order code: **RR-DotSqrs-SET**

Size of stamp: various (15 mm - 30 mm)

Weight of set: 19 g

Set contains three stamps of square dots, a wooden rod (8 mm in diameter) and instructions.



### Tetris Brick Stamps (6 - 20 mm)

Order code: **RR-15-Tetris-SET**

Size of stamp: approx. 15 x 15 x 30 mm

Weight of set: 22 g

Set contains seven stamps of Tetris bricks, a wooden rod (8 mm in diameter) and instructions.



### Isosceles Triangle set (15 x 30 mm)

Order code: **RR-15x30-SET**

Size of stamp: 15 x 30 x 30 mm

Weight of set: 30 g

Set contains six triangular stamps, a wooden rod (8 mm in diameter) and instructions.



### Isosceles Triangle set (30 x 60 mm)

Order code: **RR-30x60-SET**

Size of stamp: 30 x 60 x 46 mm

Weight of set: 60 g

Set contains six triangular stamps, a wooden rod (8 mm in diameter) and instructions.



### Equilateral Triangle Stamps set (15 mm)

Order code: **RR-RST15-SET**

Size of stamp: approx. 15 x 15 x 30 mm

Weight of set: 23 g

Set contains seven isosceles triangular stamps, a wooden rod (8 mm in diameter) and instructions.



### Equilateral Triangle Stamps set (30 mm)

Order code: **RR-RST30-SET**

Size of stamp: approx. 30 x 30 x 30 mm

Weight of set: 35 g

Set contains seven isosceles triangular stamps, a wooden rod (8 mm in diameter) and instructions.



**Geometric Shape Stamps set (15 mm)**

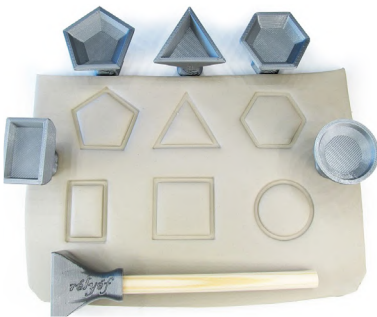
Order code: **RR-15-GEOM01-SET**

Size of stamp: approx. 15 x 15 x 30 mm

Weight of set: 21 g

Set contains six basic geometric shapes stamps (outline), a wooden rod (8 mm in diameter) and instructions.

Geometric shapes: circle, square, rectangle, triangle, pentagon and hexagon.



**Geometric Shape Stamps set (30 mm)**

Order code: **RR-30-GEOM01-SET**

Size of stamp: approx. 30 x 30 x 30 mm

Weight of set: 29 g

Set contains six basic geometric shapes stamps (outline), a wooden rod (8 mm in diameter) and instructions.

Geometric shapes: circle, square, rectangle, triangle, pentagon and hexagon.

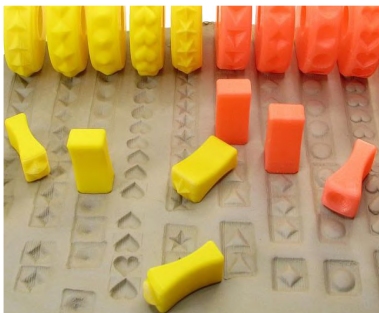


**Labyrinth Sheet (152 mm)**

Order code: **RT-Labyrinth-6in**

Size of stamp: 152 mm

Weight of set: 72 g



**Start set**

Order code: **RR-Z01-SET**

Size of stamp: approx. 30 x 14 x 14 mm

Weight of set: 25 g

Set of ten stamps with additional motifs to complement the basic set of rollers.



**Tripod set No.1 (10 - 30 mm)**

Order code: **RR-Tripod01-SET**

Size of stamp: various (15 - 30 mm)

Weight of set: 17 g

Set contains 4 stamps of tripod patterns, a wooden rod (8 mm in diameter) and instructions.



**Tripod set No.2 (10 - 30 mm)**

Order code: **RR-Tripod02-SET**

Size of stamp: various (15 - 30 mm)

Weight of set: 18 g

Set contains 4 stamps of tripod patterns, a wooden rod (8 mm in diameter) and instructions.



**Tripod set No.3 (10 - 30 mm)**

Order code: **RR-Tripod03-SET**

Size of stamp: various (15 - 30 mm)

Weight of set: 18 g

Set contains 4 stamps of tripod patterns, a wooden rod (8 mm in diameter) and instructions.



**Tripod set No.4 (10 - 30 mm)**

Order code: **RR-Tripod04-SET**

Size of stamp: various (15 - 30 mm)

Weight of set: 20 g

Set contains 4 stamps of tripod patterns, a wooden rod (8 mm in diameter) and instructions.



### **Concentric Circle set (10 - 30 mm)**

Order code: RR-ConcenCirc-SET

Size of stamp: various (15 - 30 mm)

Weight of set: 16 g

3 stamps of concentric circles of different sizes, a wooden rod (8 mm in diameter) and instructions.



### **Wedge Cross set (10 - 30 mm)**

Order code: RR-WedgeCross-SET

Size of stamp: various (15 - 30 mm)

Weight of set: 15 g

3 stamps of wedge crosses of different sizes, a wooden rod (8 mm in diameter) and instructions.





### Chakra Stamps set No.1 (30 mm)

Order code: **RR-Chakras-inch-SET**

Size of stamp: approx. 26 x 26 x 30 mm

Weight of set: 42 g

Set contains seven chakras stamps, a wooden rod (8 mm in diameter) and instructions.



### Chakra Stamps set No.2 (13 mm)

Order code: **RR-Chakras-HALFinch-SET**

Size of stamp: approx. 13 x 13 x 30 mm

Weight of set: 23 g

Set contains seven chakras stamps, a wooden rod (8 mm in diameter) and instructions.



### Religious Symbols set (20 mm)

Order code: **RR-20-ReligSym-SET**

Size of stamp: approx. 20 x 20 x 30 mm

Weight of set: 36 g

Set contains ten stamps of various religious symbols, a wooden rod (8 mm in diameter) and instructions.



### Religious Symbols set (15 mm)

Order code: **RR-15-ReligSym-SET**

Size of stamp: approx. 15 x 15 x 30 mm

Weight of set: 29 g

Set contains ten stamps of various religious symbols, a wooden rod (8 mm in diameter) and instructions.



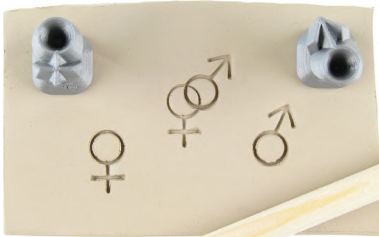
### **Zodiac - Astrological Sign Stamps (15 mm)**

Order code: **RR-15-Zodiac-SET**

Size of stamp: approx. 15 x 15 x 30 mm

Weight of set: 40 g

Set contains 12 stamps of Zodiac signs, a wooden rod (8 mm in diameter) and instructions.



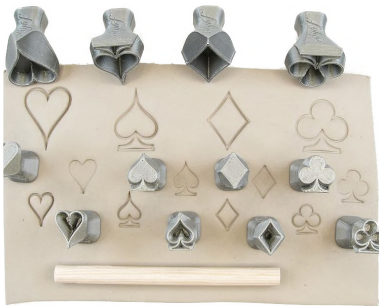
### **Male & Female Symbol Stamps (15 mm)**

Order code: **RR-MaleFem-SET**

Size of stamp: approx. 15 x 15 x 30 mm

Weight of set: 12 g

Set contains two stamps of male and female symbol, a wooden rod (8 mm in diameter) and instructions.



### **Playing Card Suit Stamps (15 - 30 mm)**

Order code: **RR-Cards01-SET**

Size of stamp: approx. 30 x 20 x 30 mm

Weight of set: 39 g

Set contains 12 stamps of card symbols, a wooden rod (8 mm in diameter) and instructions.





**Passover-Pesach Stamps (12 - 15 mm)**

Order code: **RR-Pesach01-SET**

Size of stamp: 40 x 15 x 30 mm

Weight of set: 41 g

Set contains 7 stamps of Jewish Passover signs, a wooden rod (8 mm in diameter) and instructions.



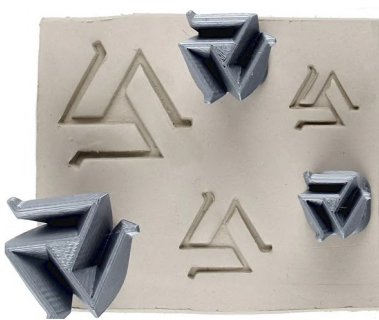
**Triskelion - Celtic (10 - 30 mm)**

Order code: **RR-TriskCeltic-SET**

Size of stamp: various (15 - 30 mm)

Weight of set: 15 g

Set contains 3 stamps of triskelions of different sizes, a wooden rod (8 mm in diameter) and instructions.



**Triskelion - Angular (10 - 30 mm)**

Order code: **RR-TriskAngul-SET**

Size of stamp: various (15 - 30 mm)

Weight of set: 15 g

Set contains 3 stamps of triskelions of different sizes, a wooden rod (8 mm in diameter) and instructions.



**Triskelion - Horn (10 - 30 mm)**

Order code: **RR-TriskHorn-SET**

Size of stamp: various (15 - 30 mm)

Weight of set: 15 g

Set contains 3 stamps of triskelions of different sizes, a wooden rod (8 mm in diameter) and instructions.





### Heart Stamps + roller (8 - 50 mm)

Order code: **RR-Hearts02-SET**

Size of stamp: various (15 - 26 mm)

Weight of set: 25 g

Set contains 6 stamps of hearts and 1 roller, a wooden rod (8 mm in diameter) and instructions.



### Heart Stamps Made with Love (5 - 25 mm)

Order code: **RR-Hearts01-SET**

Size of stamp: various (10 - 50 mm)

Weight of set: 31 g

Set contains 4 stamps of hearts, 2 stamps of hands, 3 stamps of „made with love“ sign, a wooden rod (8 mm in diameter) and instructions.



### Food Contact Materials (15 mm)

Order code: **RR-15-015N0food**

Size of stamp: 15 x 15 x 30 mm

Weight of stamp: 2 g

Stamp with the symbol of "Food contact materials" in food safe or food unsafe variant. The stamp is made from ecological bioplastics.



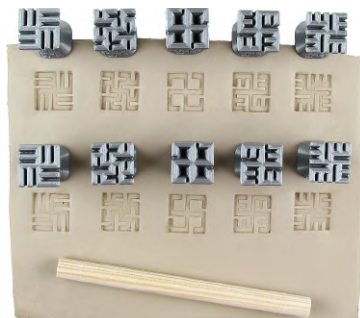
### Food Contact Materials (15 mm)

Order code: **RR-15-014-Food**

Size of stamp: 15 x 15 x 30 mm

Weight of stamp: 2 g

Stamp with the symbol of "Food contact materials" in food safe or food unsafe variant. The stamp is made from ecological bioplastics.



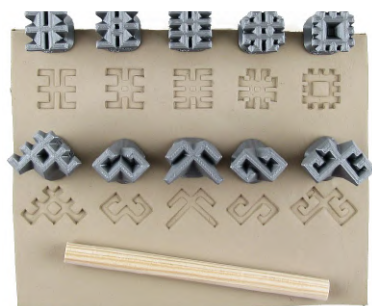
**Baltic Symbols No.1 (15 mm)**

Order code: **RR-15x15-SET06-Baltic1**

Size of stamp: 15 x 15 x 30 mm

Weight of set: 33 g

Set contains 10 stamps of baltic symbols, a wooden rod (8 mm in diameter) and instructions.



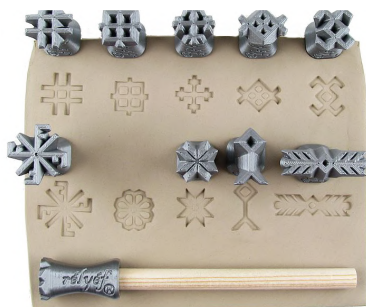
**Baltic Symbols No.2 (15 mm)**

Order code: **RR-15x15-SET07-Baltic2**

Size of stamp: 15 x 15 x 30 mm

Weight of set: 32 g

Set contains 10 stamps of baltic symbols, a wooden rod (8 mm in diameter) and instructions.



**Baltic Symbols No.3 (15 mm)**

Order code: **RR-15x15-SET08-Baltic3**

Size of stamp: 15 x 15 x 30 mm

Weight of set: 32 g

Set contains 10 stamps of baltic symbols, a wooden rod (8 mm in diameter) and instructions.



**Music Symbols (15 mm)**

Order code: **RR-Music01-SET**

Size of stamp: approx. 15 x 15 x 30 mm

Weight of set: 35 g

Set contains 9 stamps of musical symbols, roller with pattern of staff, a wooden rod (8 mm in diameter) and instructions.



### Japanese Guild Symbols (30 mm)

Order code: **RR-30-Jap01-SET**

Size of stamp: approx. 30 x 30 x 32 mm

Weight of set: 78 g

Set contains 12 stamps of Japanese Guild Symbols patterns, a wooden rod (8 mm in diameter) and instructions.



### Sushi set (15 - 20 mm)

Order code: **RR-SuShi01-SET**

Size of stamp: approx. 10-25 mm

Weight of set: 14 g

Set contains three stamps with sushi motives, a wooden rod (8 mm in diameter) and instructions.



### Kanji Symbols (20 mm)

Order code: **RR-Kanji01-SET**

Size of stamp: 20 x 20 x 30 mm

Weight of set: 18 g

Set contains four Japanese kanji stamps (Harmony, Love, Wisdom, Tranquility), a wooden rod (8 mm in diameter) and instructions.



### Chinese Character for Tea (15 - 30 mm)

Order code: **RR-Tea01-SET**

Size of stamps: 15, 20 and 30 mm

Weight of set: 18 g

Set contains 3 stamps of the Chinese character for tea in different sizes, a wooden rod (8 mm in diameter) and instructions.



### Climbing Tools Stamps (15 mm)

Order code: **RR-Climbing-SET**

Size of stamp: 20 x 15 x 30 mm

Weight of set: 33 g

Set contains 12 stamps of climbing tools a wooden rod (8 mm in diameter) and instructions.





### Stamp handles - 10 pcs

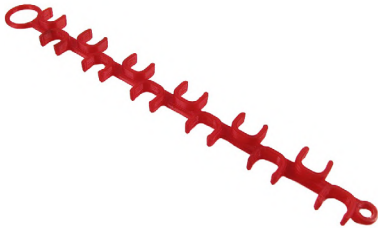
Order code: **RD-8x100mm-10**

Size of handle: 22 x 32 x 100 mm

Weight of handles: 27 g

Set contains 10 pieces of wooden rod (8 mm in diameter).

Stamp handle gives the user a better view when doing small or intricate work.



### Holder for Clay Stamps- 12 positions

Order code: **R-S015-12**

Size: 207 x 20 x 6 mm

Weight: 7g

Material: PETG

Suitable for font stamps size 6 mm (1/4"), 10 mm and 13 mm (1/2").



### Organisers for Clay Stamps - empty - 9 positions

Order code: **R-S015-9**

Size of box: 147 x 18 x 21 mm

Weight of box: 16 g

Empty holder suitable for stamps size 6 -15 mm. Stamps are not included, for 9 stamps.



### Box with Organisers for Clay Stamps - empty - 18 positions

Order code: **R-Sbox15-18**

Size of box: 150 x 35 x 38

Weight of box: 59 g

Empty box for small stamps. Suitable for stamps size 6 -15 mm, 18 positions. Comes empty.



**Box with Organisers for Clay Stamps - empty - 27 positions**

Order code: **R-Sbox15-27**

Size of box: 150 x 35 x 55

Weight of box: 83 g

Empty box for small stamps. Suitable for stamps size 6 -15 mm, 27 positions. Comes empty.



**Box with Organisers for Clay Stamps - empty - 36 positions**

Order code: **R-Sbox15-36**

Size of box: 150 x 35 x 75

Weight of box: 106 g

Empty box for small stamps. Suitable for stamps size 6 -15 mm, 36 positions. Comes empty.





## Handle Forms Mugs - Ear shaped

Order code: **RS-HandleForm01-SET**

Height of resulting handle approx. 130 mm

Weight: 33 g

Set contains 3 pieces of pottery forms for a ear shaped mug handle. Comes in 3 sizes. Each form comes in two connected parts for ease of removal.



## Handle Forms Mugs - Round

Order code: **RS-HandleForm02-SET**

Height of resulting handle approx. 130 mm

Weight: 20 g

Set contains 3 pieces of pottery forms for a round mug handle. Comes in 3 sizes. Each form comes in two connected parts for ease of removal.



## Handle Forms Mugs - Angular

Order code: **RS-HandleForm03-SET**

Height of resulting handle approx. 130 mm

Weight: 29 g

Set contains 3 pieces of pottery forms for a angular mug handle. Comes in 3 sizes. Each form comes in two connected parts for ease of removal.



## Handle Forms Mugs - Elliptic

Order code: **RS-HandleForm04-SET**

Height of resulting handle approx. 130 mm

Weight: 29 g

Set contains 3 pieces of pottery forms for a elliptic mug handle. Comes in 3 sizes. Each form comes in two connected parts for ease of removal.



## Handle Forms Jugs - Ear shaped

Order code: **RS-HandleForm01-Jumbo**

Height of resulting handle approx. 130 mm

Weight: 26 g

Set contains 1 piece of pottery form for a ear shaped jug handle. Form comes in two connected parts for ease of removal.



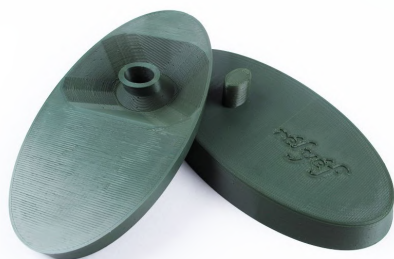
## Handle Forms Jugs - Round shaped

Order code: **RS-HandleForm02-Jumbo**

Height of resulting handle approx. 130 mm

Weight: 68 g

Set contains 1 piece of pottery form for a round shaped jug handle. Form comes in two connected parts for ease of removal.



## Handle Forms Jugs - Elliptic shaped

Order code: **RS-HandleForm04-Jumbo**

Height of resulting handle approx. 130 mm

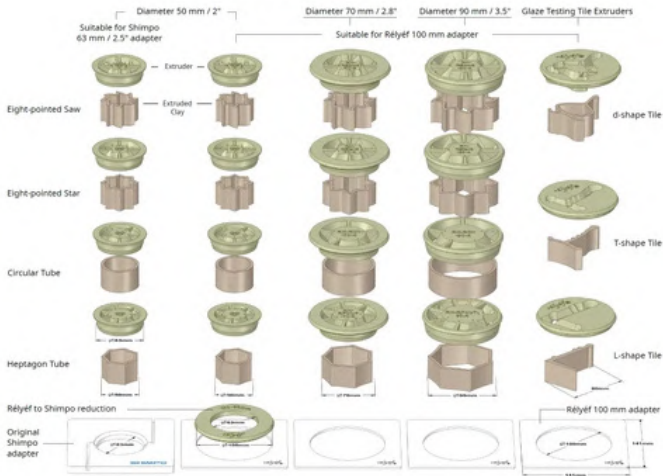
Weight: 38 g

Set contains 1 piece of pottery form for a elliptic shaped jug handle. Form comes in two connected parts for ease of removal.





Map of Extruder Hollow Dies by Rélyéf



The dies are accessories for wall-mounted clay extruder **Shimpo EX 115**, **Bailey or North Star**. The wall thickness of each extruded tube is 4 mm. All 50 mm dies fit into the **63 mm diameter Shimpo template** or our **adapter for Bailey/North Star**.

**Set for outer diameter 19-28 mm**

- contains 4 pieces of dies for extruding hollow **round tubes of various diameters**, with a **4 mm wall thickness** of extruded tube.
- dies RP-CSD4-SET fits into the 4-holes in the Shimpo template that each press owner received when purchasing a wall-mounted clay extruder **Shimpo EX 115**.

The Shimpo template is **not part of this set!** Please, refer to the **product map** if unsure which combination is the best fit for you.

All of 70 mm and 90 mm dies **can be fitted** into our original **Relyef Adapter** which **fits** into the wall-mounted clay extruder **Shimpo EX 115** and can be bought **in a set** with the dies or **separately**.



The 50 mm dies **can also be used** with the **Relyef adapter** when used with the **reduction** that can **only** be bought **in a set** with the dies.



### Extruder Hollow Die - Round (50 mm)

Order code: **RH-SCir50-4**

Weight: 38 g

The dies are accessories for wall-mounted clay extruder Shimpo EX 115, Bailey or North Star. The wall thickness of each extruded tube is 4 mm. All 50 mm dies fit into the 63 mm diameter Shimpo template or our adapter for Bailey/North Star. The Shimpo template is not part of this set!



### Extruder Hollow Die - Heptagon (50 mm)

Order code: **RH-SPoly7-50-4**

Weight: 42 g

The dies are accessories for wall-mounted clay extruder Shimpo EX 115, Bailey or North Star. The wall thickness of each extruded tube is 4 mm. All 50 mm dies fit into the 63 mm diameter Shimpo template or our adapter for Bailey/North Star. The Shimpo template is not part of this set!



### Extruder Hollow Die - Star (50 mm)

Order code: **RH-SSStar8-50-4**

Weight: 40 g

The dies are accessories for wall-mounted clay extruder Shimpo EX 115, Bailey or North Star. The wall thickness of each extruded tube is 4 mm. All 50 mm dies fit into the 63 mm diameter Shimpo template or our adapter for Bailey/North Star. The Shimpo template is not part of this set!



### Extruder Hollow Die - Saw (50 mm)

Order code: **RH-SSaw8-50-4**

Weight: 42 g

The dies are accessories for wall-mounted clay extruder Shimpo EX 115, Bailey or North Star. The wall thickness of each extruded tube is 4 mm. All 50 mm dies fit into the 63 mm diameter Shimpo template or our adapter for Bailey/North Star. The Shimpo template is not part of this set!



**Extruder Hollow Die - Round (70 mm)**

Order code: **RH-RCir70-4**

Weight: 74 g

The dies are accessories for wall-mounted clay extruder Shimpo EX 115. The wall thickness of each extruded tube is 4 mm. The Shimpo template is not part of this set!



**Extruder Hollow Die - Heptagon (70 mm)**

Order code: **RH-RPoly7-70-4**

Weight of handles: 86 g

The dies are accessories for wall-mounted clay extruder Shimpo EX 115. The wall thickness of each extruded tube is 4 mm. The Shimpo template is not part of this set!



**Extruder Hollow Die - Star (70 mm)**

Order code: **RH-RStar8-70-4**

Weight: 91 g

The dies are accessories for wall-mounted clay extruder Shimpo EX 115, Bailey or North Star. The wall thickness of each extruded tube is 4 mm. The Shimpo template is not part of this set!



**Extruder Hollow Die - Saw (70 mm)**

Order code: **RH-RSaw8-70-4**

Weight: 93 g

The dies are accessories for wall-mounted clay extruder Shimpo EX 115, Bailey or North Star. The wall thickness of each extruded tube is 4 mm. The Shimpo template is not part of this set!



### Extruder Hollow Die - Round (90 mm)

Order code: **RH-RCir90-4**

Weight: 68 g

The dies are accessories for wall-mounted clay extruder Shimpo EX 115, Bailey or North Star. The wall thickness of each extruded tube is 4 mm. The Shimpo template is not part of this set!



### Extruder Hollow Die - Heptagon (90 mm)

Order code: **RH-RPoly7-90-4**

Weight: 90 g

The dies are accessories for wall-mounted clay extruder Shimpo EX 115, Bailey or North Star. The wall thickness of each extruded tube is 4 mm. The Shimpo template is not part of this set!



### Extruder Hollow Die - Star (90 mm)

Order code: **RH-RStar8-90-4**

Weight: 87 g

The dies are accessories for wall-mounted clay extruder Shimpo EX 115, Bailey or North Star. The wall thickness of each extruded tube is 4 mm. The Shimpo template is not part of this set!



### Extruder Hollow Die - Saw (90 mm)

Order code: **RH-RSaw8-90-4**

Weight: 92 g

The dies are accessories for wall-mounted clay extruder Shimpo EX 115, Bailey or North Star. The wall thickness of each extruded tube is 4 mm. The Shimpo template is not part of this set!



**Glaze Test Tile Extruder Die - L shape (80 mm)**

Order code: **RH-TST-L**

Weight: 54 g

All dies with adapter fits into the wall-mounted clay extruder Shimpo EX 115. Dies are made from ecological bioplastics.



**Glaze Test Tile Extruder Die - T shape (80 mm)**

Order code: **RH-TST-T**

Weight: 56 g

All dies with adapter fits into the wall-mounted clay extruder Shimpo EX 115. Dies are made from ecological bioplastics.



**Glaze Test Tile Extruder Die - D shape (80 mm)**

Order code: **RH-TST-d**

Weight: 68 g

All dies with adapter fits into the wall-mounted clay extruder Shimpo EX 115. Dies are made from ecological bioplastics.



**Extruder Handle Die - Ellipse (63 mm)**

Order code: **RHS-Ellipse-01**

Weight: 44 g

The dies are accessories for wall-mounted clay extruder Shimpo EX 115, Bailey or North Star. All 63 mm dies fit into the 63 mm diameter Shimpo template or our adapter for Bailey/North Star. The Shimpo template is not part of this set!



**Extruder Handle Die - Hollow Ellipse (63 mm)**

Order code: **RHS-EllipseHollow-02**

Weight: 44 g

The dies are accessories for wall-mounted clay extruder Shimpo EX 115, Bailey or North Star. All 63 mm dies fit into the 63 mm diameter Shimpo template or our adapter for Bailey/North Star. The Shimpo template is not part of this set!



**Extruder Handle Die - Double Rope (63 mm)**

Order code: **RHS-DoubleRopes-03**

Weight: 39 g

The dies are accessories for wall-mounted clay extruder Shimpo EX 115, Bailey or North Star. All 63 mm dies fit into the 63 mm diameter Shimpo template or our adapter for Bailey/North Star. The Shimpo template is not part of this set!



**Adapter for Shimpo Wall Extruder**

Order code: **RH-100**

Size: 141 x 141 mm, inner hole 100 mm

Weight: 44 g

Fits into the wall-mounted clay extruder Shimpo EX 115. It's a plate with dimensions 141 x 141 mm and thickness of 3 mm. The inner diameter of the hole is 100 mm.



**Adapter for North Star/Bailey Wall Extruders**

Order code: **RH-4in-63**

Weight: 55 g

The 4 inch Die Adapter Fits into the Bailey or the North Star wall-mounted clay extruders. It's a square plate made from bioplastic. The inner diameter of the hole is 63 mm.



**Extruder Hollow Die Round Set (19-28 mm)**

Order code: **RP-CSD4-SET**

Weight: 38 g

Set contains contains 4 pieces of dies for extruding hollow round tubes of various diameters, with a 4 mm wall thickness of extruded tube. Dies RP-CSD4-SET fits into the 4-holes in the Shimpo template that each press owner received when purchasing a wall-mounted clay extruder Shimpo EX 115.





### Ddebossed lines (14 mm)

Set: **RK-C01-SET-N**

Mountain Triangle: **RK-C01-001-N**

Aztec Triangle: **RK-C01-002-N**

Zig Zag Triangle: **RK-C01-004-N**

Diamond Rhombus: **RK-C01-007-N**

Squares: **RK-C01-003-N**

Slanted Line: **RK-C01-005-N**

Simple Line: **RK-C01-009-N**

Arrow No. 1: **RK-C01-008-P**

Fence Line: **RK-C01-010-N**

Triangles: **RK-C01-011-N**

These rollers are available to order as a set or individually. Roller diameter is 50 mm, width 14 mm. Set contains ten rollers with debossed bar patterns, handle and instructions. Weight of set: 125 g / one roller: 10 g



### Ddebossed waves (14 mm)

Set: **RK-V01-SET-N**

River Wave: **RK-V01-010-N**

Organic Wave: **RK-V01-011-N**

Square Wave: **RK-V01-007-N**

Celtic Knot: **RK-V01-005-N**

Single Spiral: **RK-V01-003-N**

Greek Spiral: **RK-V01-002-N**

Double Spiral: **RK-V01-009-N**

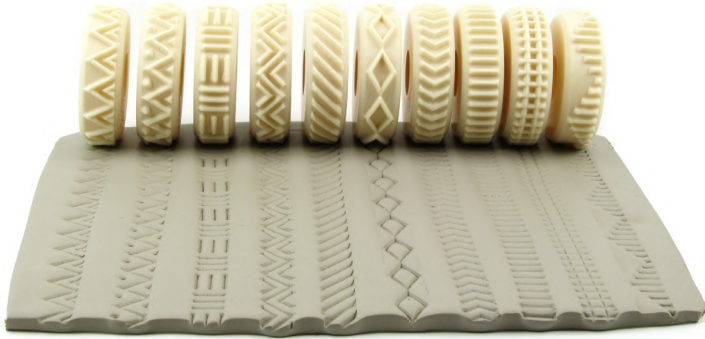
Chain Wave: **RK-V01-001-N**

Wavy Line: **RK-V01-004-N**

Dots: **RK-V01-006-N**

These rollers are available to order as a set or individually. Roller diameter is 50 mm, width 14 mm. Set contains ten rollers with debossed bar patterns, handle and instructions. Weight of set: 130 g / one roller: 10 g





**Embossed lines (14 mm)**

Set: **RK-C01-SET-P**

Mountain Triangle: **RK-C01-001-P**

Aztec Triangle: **RK-C01-002-P**

Squares: **RK-C01-003-P**

Zig Zag Triangle: **RK-C01-004-P**

Slanted Line: **RK-C01-005-P**

Diamond Rhombus: **RK-C01-007-P**

Arrow No.1: **RK-C01-008-P**

Simple Line: **RK-C01-009-P**

Fence Line: **RK-C01-010-P**

Triangles: **RK-C01-011-P**

These rollers are available to order as a set or individually. Roller diameter is 50 mm, width 14 mm. Set contains ten rollers with debossed bar patterns, handle and instructions. Weight of set: 115 g / one roller: 10 g



**Embossed waves (14 mm)**

Set: **RK-V01-SET-P**

River Wave: **RK-V01-010-P**

Ocean Spiral: **RK-V01-008-P**

Square Wave: **RK-V01-007-P**

Celtic Knot: **RK-V01-005-P**

Single Spiral: **RK-V01-003-P**

Greek Spiral: **RK-V01-002-P**

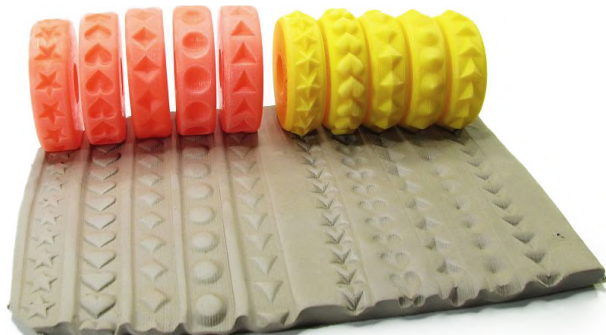
Double Spiral: **RK-V01-009-P**

Chain Wave: **RK-V01-001-P**

Wavy Line: **RK-V01-004-P**

Dots: **RK-V01-006-P**

These rollers are available to order as a set or individually. Roller diameter is 50 mm, width 14 mm. Set contains ten rollers with debossed bar patterns, handle and instructions. Weight of set: 120 g/ one roller: 10 g



## Basic shapes (14 mm)

Set: **RK-Z01-SET**

Debossed Stars: **RK-Z01-004-N**

Debossed Hearts: **RK-Z01-005-N**

Debossed Gems: **RK-Z01-002-N**

Debossed Coins: **RK-Z01-001-N**

Debossed Triange: **RK-Z01-003-P**

Embossed Stars: **RK-Z01-004-P**

Embossed Hearts: **RK-Z01-005-P**

Embossed Gems: **RK-Z01-002-P**

Embossed Coins: **RK-Z01-001-P**

Embossed Triangle: **RK-Z01-003-P**

Embossed + debossed basic shapes. These rollers are available to order as a set or individually. Roller diameter is 50 mm, width 14 mm. Set contains ten rollers with both debossed and embossed bar patterns, handle and instructions. Weight of set: 110 g / one roller: 10 g





### Roller handle

Order code: **RD-UB2**

Size of handle: 145 x 20 x 20 mm

Weight of handle: 25 g

Ergonomic handle for gripping one 14-mm decorative roller.



### Roller handle – double

Order code: **RD-UB2**

Size of handle: 145 x 35 x 20 mm

Weight of handle: 25 g

Ergonomic handle for gripping a pair of 14-mm decorative rollers or one 28-mm roller.



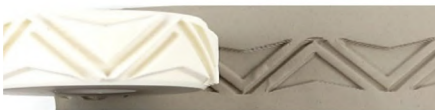
### Roller handle – quintuple

Order code: **RD-UB5**

Size of handle: 145 x 76 x 20 mm

Weight of handle: 31 g

Ergonomic handle for gripping five 14-mm decorative rollers or equivalent combinations of 28-mm rollers with a total width of 70 mm.



### Arrow Roller No. 3 - embossed (14 mm)

Order code: **RK-C01-018-P**

Weight: 10 g

Rollers make a clear impression and have a graduated angle making for easy cutting into the clay and an easy release.



**Arrow Roller No. 3 - embossed (28 mm)**

Order code: **RK2-C01-018P**

Weight: 16 g

Rollers make a clear impression and have a graduated angle making for easy cutting into the clay and an easy release.

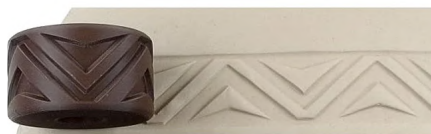


**Arrow Roller No. 3 - debossed (14 mm)**

Order code: **RK-C01-018-N**

Weight: 10 g

Rollers make a clear impression and have a graduated angle making for easy cutting into the clay and an easy release.



**Arrow Roller No. 3 - debossed (28 mm)**

Order code: **RK2-C01-018N**

Weight: 16 g

Rollers make a clear impression and have a graduated angle making for easy cutting into the clay and an easy release.



**Arrow Roller No. 3 - embossed (56 mm)**

Order code: **RK4-C01-018N**

Weight: 29 g

Rollers make a clear impression and have a graduated angle making for easy cutting into the clay and an easy release.



**Wave Roller Chain - embossed (28 mm)**

Order code: **RK2-V01-001P**

Weight: 16 g

Rollers make a clear impression and have a graduated angle making for easy cutting into the clay and an easy release.



**Wave Roller Chain - debossed (28 mm)**

Order code: **RK2-V01-001N**

Weight: 16 g

Rollers make a clear impression and have a graduated angle making for easy cutting into the clay and an easy release.



**Wave Roller Square - embossed (28 mm)**

Order code: **RK2-V01-007P**

Weight: 16 g

Rollers make a clear impression and have a graduated angle making for easy cutting into the clay and an easy release.



**Wave Roller Square - debossed (28 mm)**

Order code: **RK2-V01-007N**

Weight: 16 g

Rollers make a clear impression and have a graduated angle making for easy cutting into the clay and an easy release.



**Spiral Roller Greek - embossed (28 mm)**

Order code: **RK2-V01-002P**

Weight: 16 g

Rollers make a clear impression and have a graduated angle making for easy cutting into the clay and an easy release.



**Spiral Roller Greek - debossed (28 mm)**

Order code: **RK2-V01-002N**

Weight: 16 g

Rollers make a clear impression and have a graduated angle making for easy cutting into the clay and an easy release.





**String Roller- Beads - embossed (14 mm)**

Order code: **RK-V01-012-P**

Weight: 10 g

Rollers make a clear impression and have a graduated angle making for easy cutting into the clay and an easy release.



**String Roller- Drops - embossed (14 mm)**

Order code: **RK-V01-013-P**

Weight: 10 g

Rollers make a clear impression and have a graduated angle making for easy cutting into the clay and an easy release.



**String Roller- Hearts - embossed (14 mm)**

Order code: **RK-V01-014-P**

Weight: 10 g

Rollers make a clear impression and have a graduated angle making for easy cutting into the clay and an easy release.



**String Roller- Stars - embossed (14 mm)**

Order code: **RK-V01-015-P**

Weight: 10 g

Rollers make a clear impression and have a graduated angle making for easy cutting into the clay and an easy release.



**Symbol Roller- Human Footprints - embossed (14 mm)**

Order code: **RK-H01-001-P**

Weight: 10 g

Rollers make a clear impression and have a graduated angle making for easy cutting into the clay and an easy release.



**Symbol Roller- Yin Yang - embossed (14 mm)**

Order code: **RK-S01-003-P**

Weight: 10 g

Rollers make a clear impression and have a graduated angle making for easy cutting into the clay and an easy release.



**Symbol Roller- Tally Marks - embossed (14 mm)**

Order code: **RK-S01-004-P**

Weight: 10 g

Rollers make a clear impression and have a graduated angle making for easy cutting into the clay and an easy release.



**Symbol Roller- Radioactivity - embossed (14 mm)**

Order code: **RK-S01-001-P**

Weight: 10 g

Rollers make a clear impression and have a graduated angle making for easy cutting into the clay and an easy release.





### **Plant Roller- Leaf - embossed (14 mm)**

Order code: **RK-R01-002-P**

Weight: 10 g

Rollers make a clear impression and have a graduated angle making for easy cutting into the clay and an easy release.



### **Symbol Roller- Stem - embossed (14 mm)**

Order code: **RK-R01-004-P**

Weight: 10 g

Rollers make a clear impression and have a graduated angle making for easy cutting into the clay and an easy release.



### **Symbol Roller- Human Footprints - debossed (14 mm)**

Order code: **RK-H01-001-N**

Weight: 10 g

Rollers make a clear impression and have a graduated angle making for easy cutting into the clay and an easy release.



### **Symbol Roller- Radioactivity - debossed (14 mm)**

Order code: **RK-S01-001-N**

Weight: 10 g

Rollers make a clear impression and have a graduated angle making for easy cutting into the clay and an easy release.



**Animal Roller- Dragonflies - embossed (14 mm)**

Order code: **RK-A01-002-P**

Weight: 10 g

Rollers make a clear impression and have a graduated angle making for easy cutting into the clay and an easy release.



**Animal Roller- Pawprints - embossed (14 mm)**

Order code: **RK-A01-001-P**

Weight: 10 g

Rollers make a clear impression and have a graduated angle making for easy cutting into the clay and an easy release.



**Animal Roller- Pawprints - debossed (14 mm)**

Order code: **RK-A01-001-N**

Weight: 10 g

Rollers make a clear impression and have a graduated angle making for easy cutting into the clay and an easy release.



**Celtic Knot Roller No 2. - debossed (28 mm)**

Order code: **RK2-V01-018N**

Weight: 16 g

Rollers make a clear impression and have a graduated angle making for easy cutting into the clay and an easy release.



The newest tools available on the website  
[www.relyepotterytools.com](http://www.relyepotterytools.com)