

# INSTALLATION INSTRUCTIONS

## Audi A8D2 - Xenon headlights

RFL

### Parts needed

2x Aharon Optimus TR Mini projectors  
2x Aharon 9005 high beam splitter cables  
2x Custom made brackets + mounting hardware

### Tools needed

PZ / PH screwdriver / bit  
7mm socket  
Coffee and a bit of patience

### Instructions

#### STEP 1 Remove the original projector

Remove the original projector through the back of the headlight. In most cases this is just a matter of disconnecting the D2S connector by turning it. And removing the screws holding the projector to remove the projector.



Make sure to keep the screws. You need them in a later stage.

The original projector is attached to the frame with 3 small screws. During unscrewing, these can break. Just in case this happens, we have added 6 extra screws, washers, and nuts, in case you need to drill the broken bolt out of the frame.

There are a few options to remove the thread / a broken bolt. When there is a piece sticking out, you could try a plier or make a small cut in it to remove it with a screwdriver. You can also drill it out. You need to open the headlight, which is easy, the front glass is held in place with clips. Be careful with the chrome, and wear gloves in the next steps. You need to remove the chrome edge cover, which is just clicked in place. And with the 3 PH screws in the headlight (brass colored) you can dismount the chrome cover for the frame. 1 bolt can be a bit hard to reach, but with a smaller flat screwdriver, the screw can be loosened. For drilling out the broken bolt you can first use a small drill followed by a bigger drill, 4,5 to make the hole big enough for the M4x20 bolt. It is likely you will drill around the broken bolt because the bolt is harder than the aluminum frame. That's why we advise starting small and then go to 4,5mm. Now you can stick the M4x20 through the hole and mount the bracket/projector with the washers and nuts.

#### STEP 2 Modify the projector

To make sure the projector can be mounted correctly, you need to modify the projector a bit. Please see the picture, and the highlighted part, below:



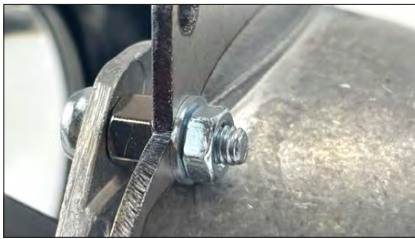
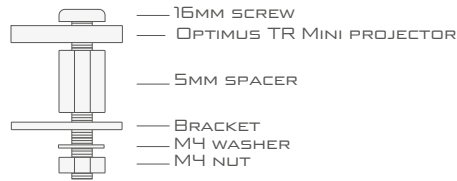
# INSTALLATION INSTRUCTIONS

## Audi A8D2 - Xenon headlights

RFL

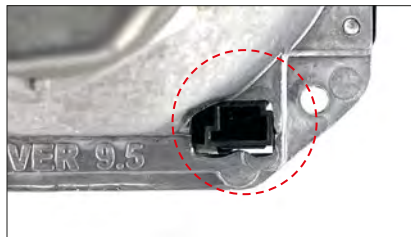
### STEP 3 Mount the bracket

Mount the brackets + hardware like shown in the pictures below:



### STEP 4 Mount the projector

Now you are ready to mount the new Aharon projector inside the headlight. Use the nuts (from step 1 ) to secure the bracket. Also make sure to connect the highbeam/solenoid cable to the solenoid connector (highlighted part) and connect the other end to the high beam splitter. The high beam splitter is connected to the original high beam bulb and connector.



### STEP 5 Mount the D2S bulb

Mount the D2S bulb like shown in the pictures below using the supplied hardware.



- From left to right:
- Aluminium bulb holder
  - Rubber ring, needed to secure the bulb nice and tight
  - D2S bulb
  - Projector

### More info?



For more info about retrofitting and wire connections please scan the QR-code or visit <https://retrofitlab.com/pages/installation-instructions>