

### 1 Introduction

#### Parts

- 2x Aharon Optimus NT projectors
- 2x Aharon H1 high beam splitters
- 2x Custom mounting brackets
- 1x Mounting hardware

#### Tools needed

- PZ / PH screwdriver / bit
- Torx 20 screwdriver / bit
- 7mm socket

### 2 Remove the original projector



Remove the original projector and hardware from the threads. (and feel how light the plastic projector is).

!! Make sure you keep the bottom torx mounting screw, this screw is re-used !!

<-- The empty headlight should look like this.

### 3 Projector modification



A little piece of material needs to be removed from the new Aharon Optimus NT projector to clear the height adjustment assembly. This can be done with an angle grinder, hack saw or Dremel for example.

# 4

## Brackets



Mount the metal spacers (not the nuts) with the screws to the bracket.



Place 2 plastic spacers on the original threaded mounting points (the bottom one will be added later).



Place the bracket on the threaded mounting points (can be a bit tight).

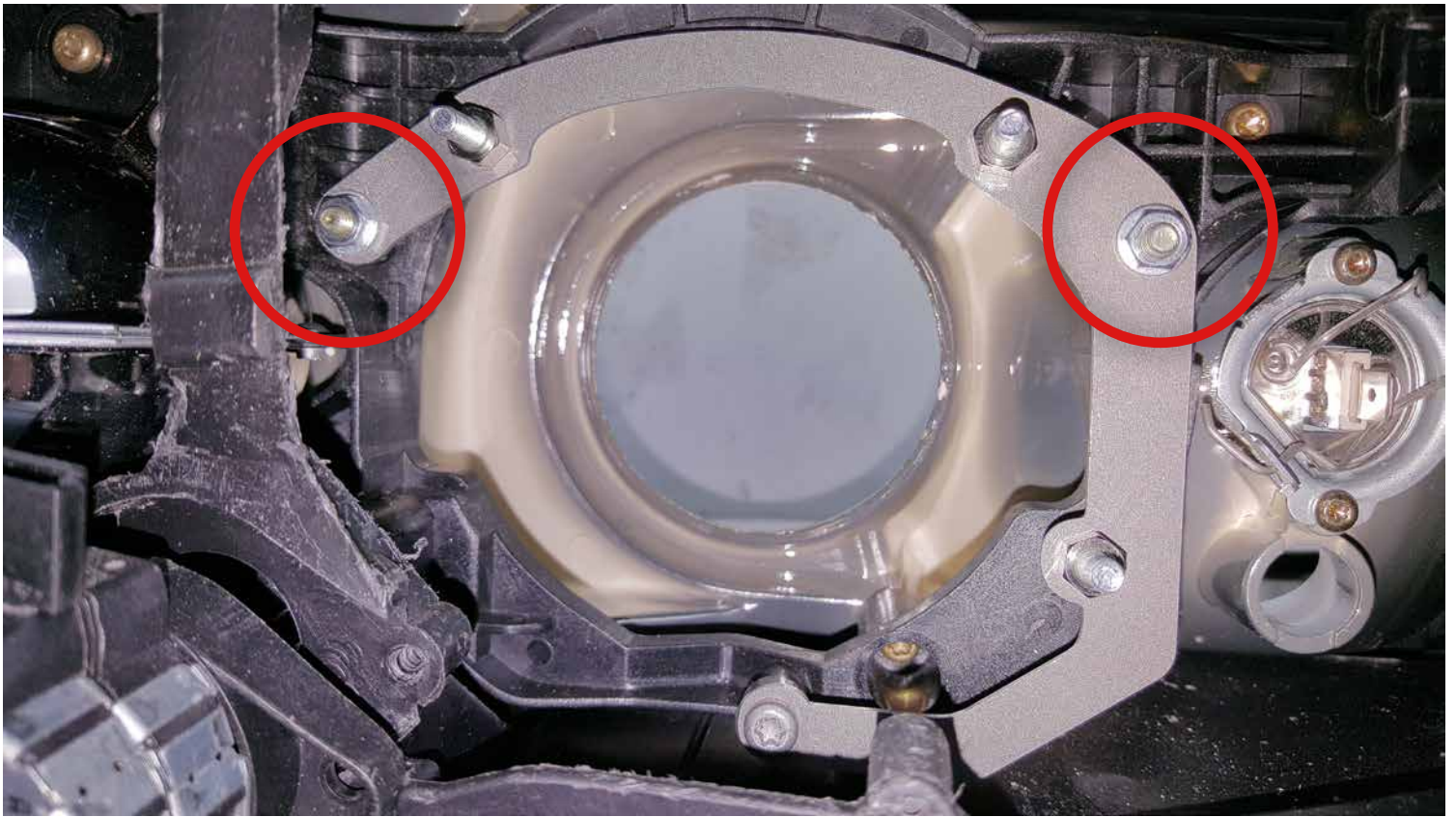


Now place the bottom screw thought the bracket.

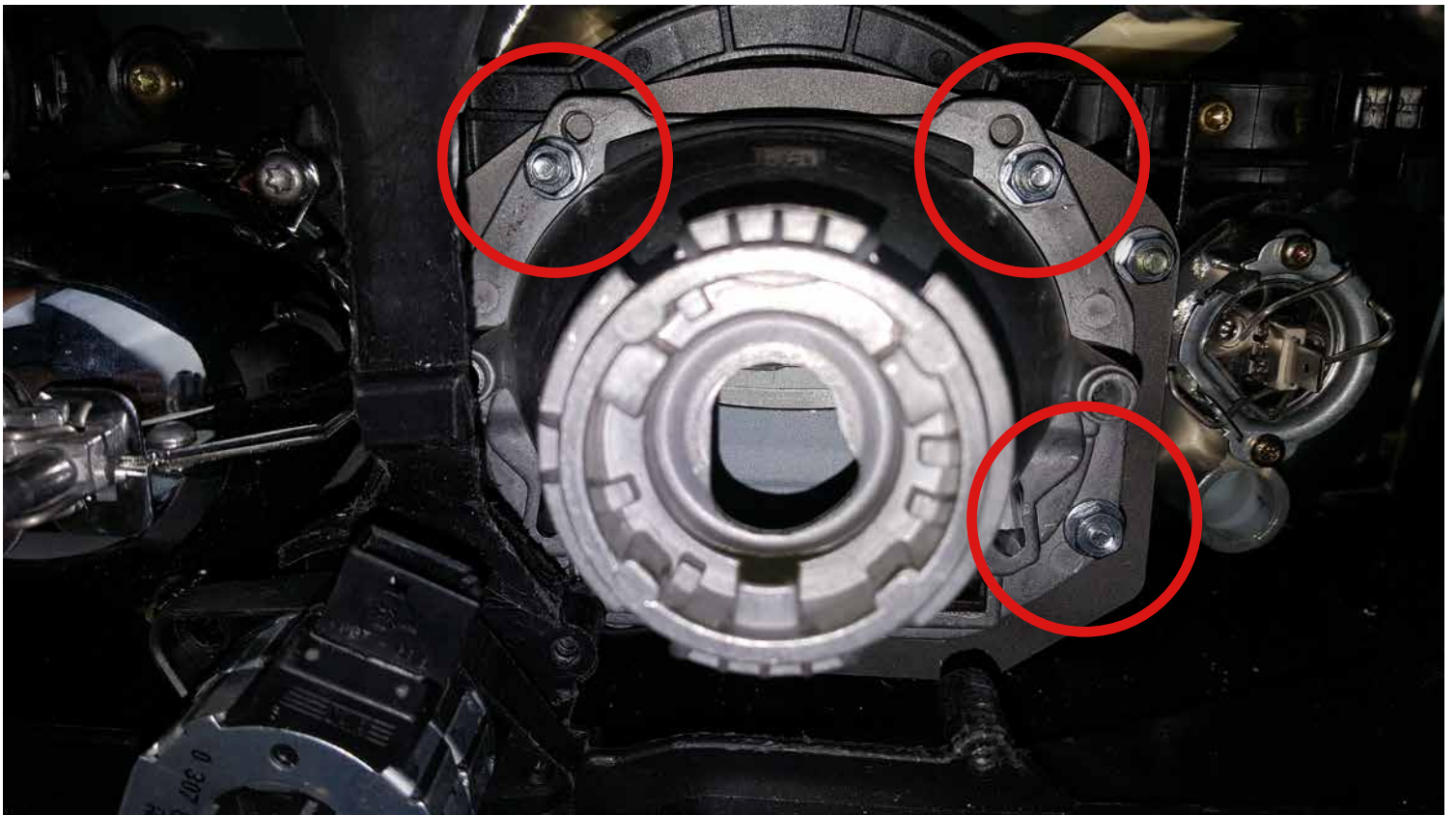


Place the black spacer on the screw and direct the screw to the hole and fasten the screw.





Add the rings and nuts to the top 2 mounting points and fasten the nuts. The bracket is now secured to the original mounting points.



Put the projector in position and push the projector on the exposed threads. This can also be a bit tight and some (delicate) force may be needed to push the projector on the threads. After this add the rings and nuts and fasten the nuts.

You are now done mounting the projector!

**5**

## How to mount the D2S bulb



Open the ring.



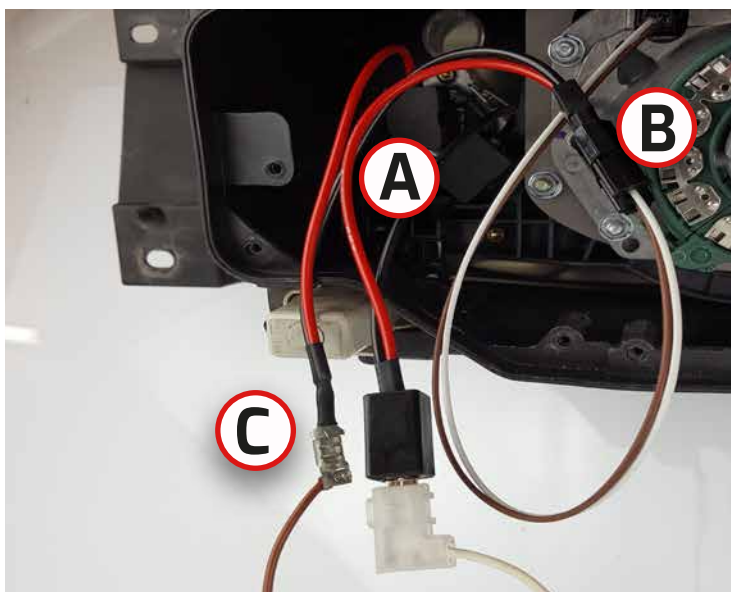
Close the ring with the guiding pin positioned in the notch in the bulb.



Twist the bulb and ring on to the projector.

**6**

## Wiring



For the bi-xenon function you can connect the high beam splitter as following:

- A:** To original high beam bulb.
- B:** To solenoid cable on projector.
- C:** To original high beam connectors.



Optionally connect and mount the H3 LED bulb for the fog light and/or the T10 LED for the position light.

Re-assemble the parts, connect the D2S bulb with the D2S connector and close the headlight and you're done. Now you've got only one headlight to go and you can go enjoy your improved light output!