

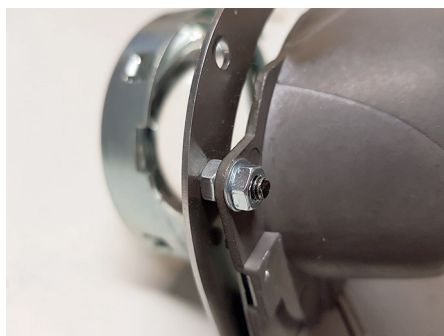
### 1 Check contents

Check the contents of the package

1. Mini D1S 3.0 projectors
2. Brackets
3. Mounting hardware
4. H7 splitters
5. Solenoid wires

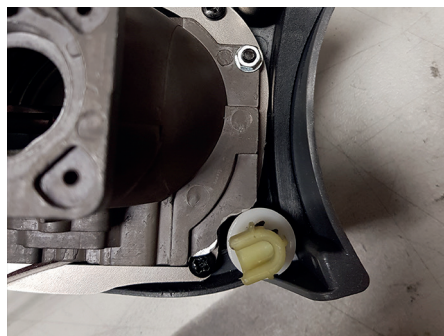
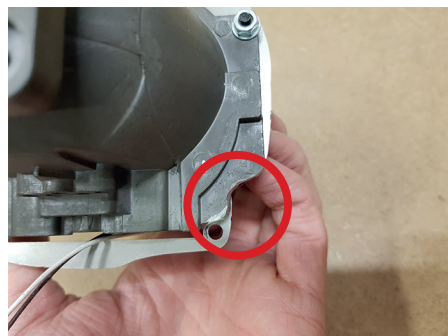


### 2 How to install



Place the bracket on the front part of the projector. Use the hardware to mount it to the projector. It is mounted as followed:

*screw - bracket - nut - projector - washer - nut*



A small piece of the projector needs to be trimmed for the plastic holder/retainer, try to align it with the bracket.



Make sure to trim the projector so there is enough room for the screw.



Trim a piece on the inside of the headlight to make sure the solenoid of the projector will fit.