

INSTALLATION INSTRUCTIONS

AUDI A4/S4 B6 - xenon

RFL

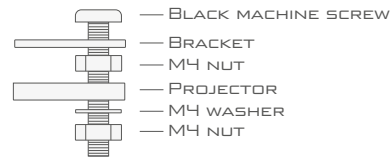
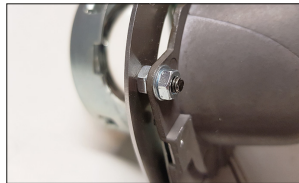
Parts needed

2x Aharon Mini D15/D25 projectors
2x Aharon H7 high beam splitter cables
2x Custom made brackets + mounting hardware

Instructions

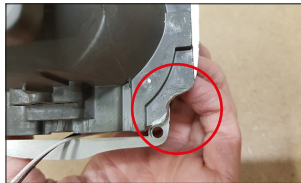
STEP 1 Mounting the bracket

Place the bracket on the front part of the projector. Use the hardware to mount it to the projector. It is mounted as followed:

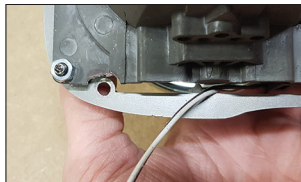


STEP 2 Modifications

A small piece of the projector needs to be trimmed for the plastic holder/retainer inside the headlight. Try to align it with the bracket.



Make sure to trim the projector so there is enough room for the screw.



Trim a piece on the inside of the headlight to make sure the solenoid of the projector will fit.



More info?



For more info about retrofitting and wire connections please scan the QR-code or visit <https://retrofitlab.com/pages/installation-instructions>