



Tinkering Paws

BOARD GAME INSERTS



Marvel United: X-Men



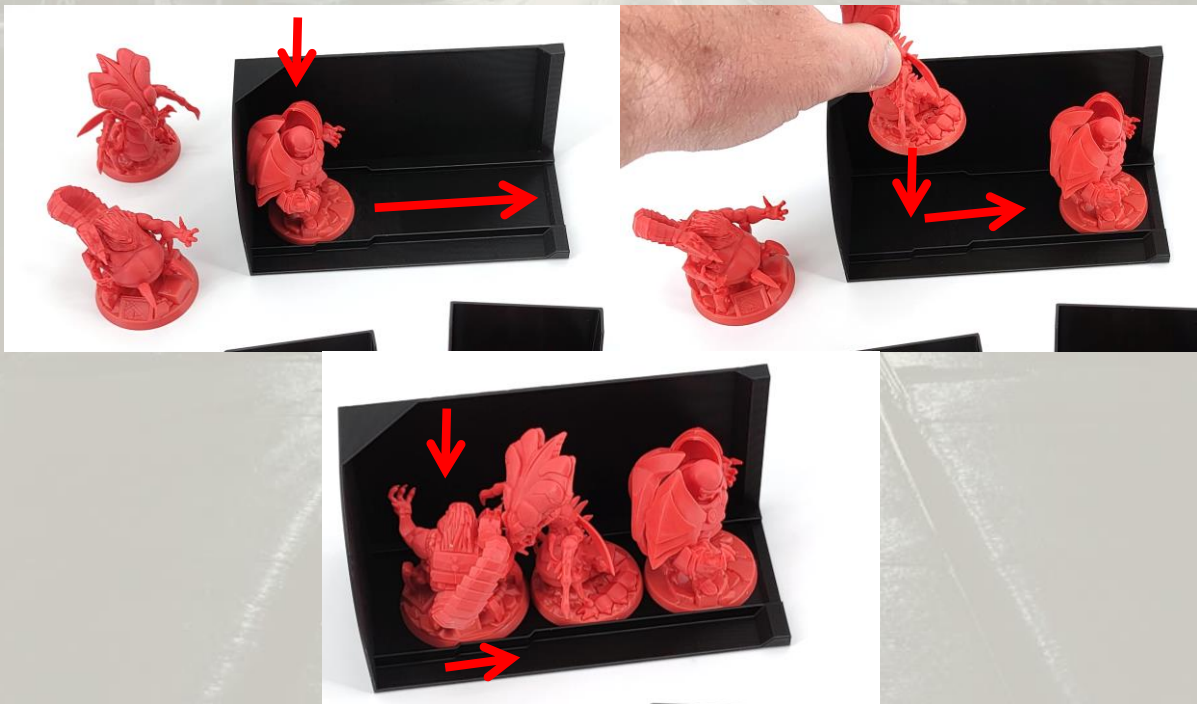
Contents

1. 12 Miniature Racks
2. 13 Card Boxes & 11 Dividers
3. 3 Token Boxes
4. 1 Villain Dashboard Box
5. 1 Location Box
6. 1 Box for remaining Cardboard Tokens
7. 1 Box for Color Bases & Lockheed



Miniature Racks for Death, Deadpool, Onslaught, Brood Queen & Mojo

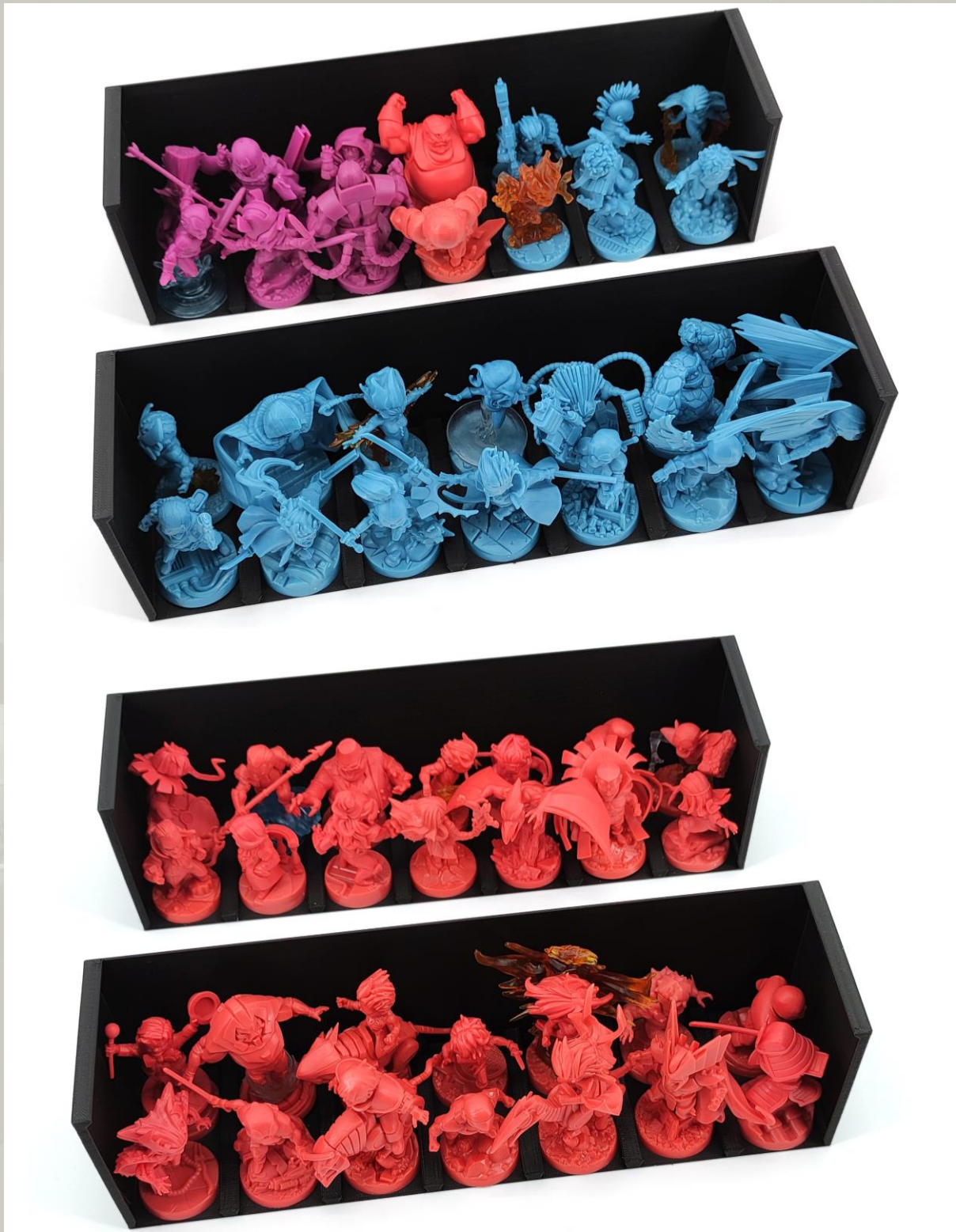
Place Onslaught, Brood Queen & Mojo in the left side of their box and slide them over to the right to secure them (see pictures below).





Miniature Racks for small miniatures

There are two sets of four identical racks. Start adding miniatures into the smaller set of racks (shown above), as some miniatures will only fit in those racks.



Miniature Racks for small miniatures

Proceed with the racks for bigger miniatures (shown above).



Token Box #1

Place the components as shown.



Token Box #2

Place the components as shown.



Token Box #3

Place the components as shown.

- Left picture: Layout for Plastic Tokens
- Right picture: Layout for Cardboard Tokens



Card Boxes

All Villain, Hero & Anti-Hero cards are stored alphabetically in the card boxes. Depending on your card sleeves and the expansions you own, a different combination of card boxes is needed.

For the best alphabetical sorting, place the empty card boxes in the game boxes and only then sort the cards into them.



Remaining boxes

The other boxes store the Locations, Villain Dashboards, Color Bases, Lockheed and the remaining Cardboard Tokens.



Component Storage #1

Two small expansion boxes are needed to store the eight Miniature Racks. Please note: The lid will not close flush on one of them.



Component Storage #2

Place the two medium Card Boxes in the base game box.



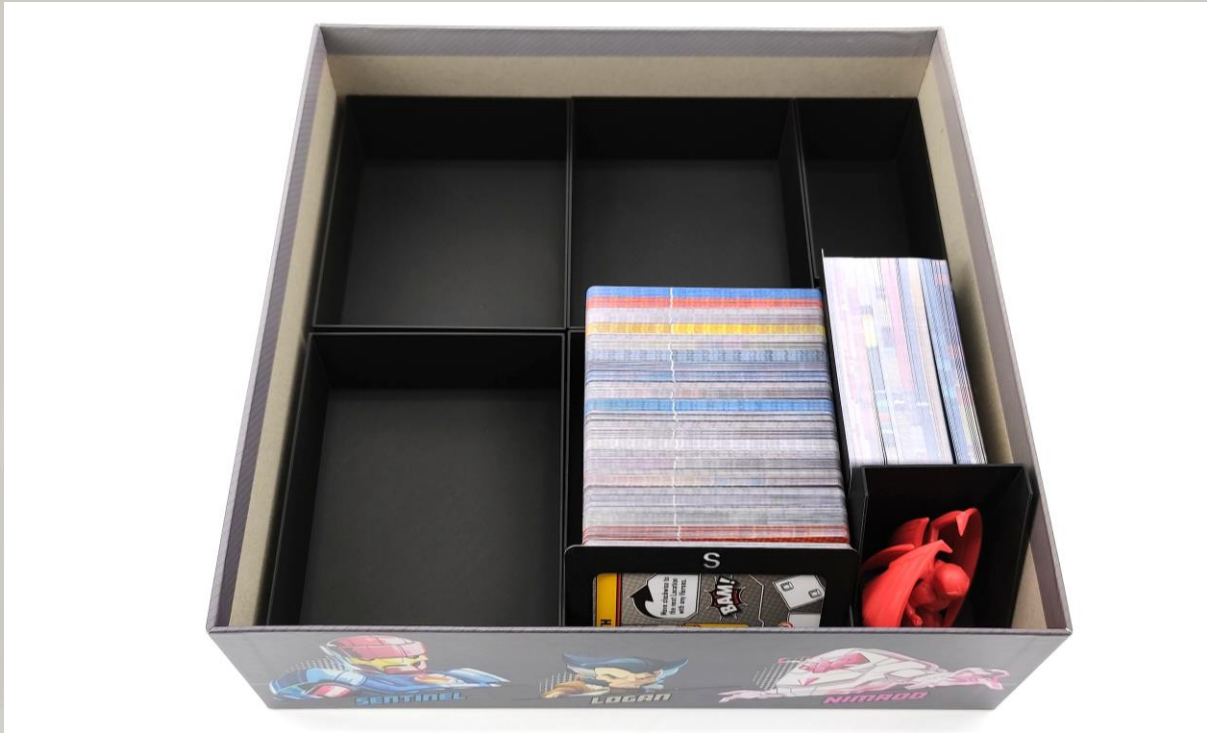
Component Storage #3

Add two big and two small Card Boxes.



Component Storage #4

Add the Mini Card Box and Deadpool.



Component Storage #5

Add the remaining Card Boxes and Death to the Days of Future Past box. If you do not own this expansion, three Place Holders are available optional to use a different box (shown below).





Component Storage #6

Proceed with the Stretch Goal Box and place the base plate for the Sentinels in it.



Component Storage #7

Add the Sentinels like shown.



Component Storage #8

Add the last Miniature Rack and the box for Color Bases.



Component Storage #9

Add the box for remaining Cardboard Tokens and the Villain Dashboard Box.



Component Storage #10

Add the Token Boxes and the Location Box.



Component Storage #11

Add the remaining components and rulebooks.

For questions or feedback visit www.TinkeringPaws.de

Or write an email to info@tinkeringpaws.de