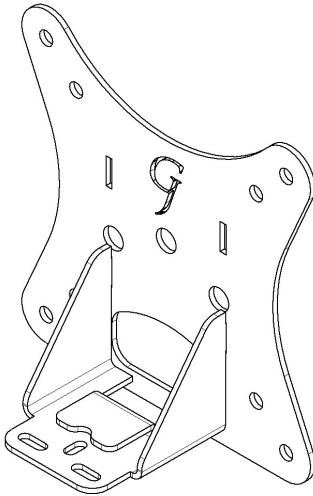


GJOA0082



VESA MOUNT ADAPTER

GLADIATOR JOE



Fits the following models:

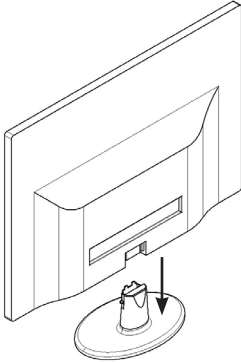
Acer S200HQL, S200SQL, S200HL,
G206HL, G206HL Bbd, G206HQL,
G206HQL bd, S220HQL, S220HL,
R221Q BID, G226HQL, G226HQL
Bbd, G226HQL hbd, G226HQL
hbid, G226HQL ibid, S230HL,
G236HL, G236HL abii, G236HL Bbd,
G236HL Bbid, G236HL, G236HL
abii, G236HL Bbd, G236HL Bbid,
G247HL, G247BD, G247HYU,
XG270HU, XG270HU, R271 BID

WARNING!

- To avoid danger of suffocation, keep these parts away from babies and children.
- Be aware of the sharp edges of the product.
- Check carefully to make sure that there are no missing or defective parts. Improper installation may cause problems.
- Do not hang something heavy on this product, which may exceed the weight capacity.
- Do not use this product for any other purpose that is

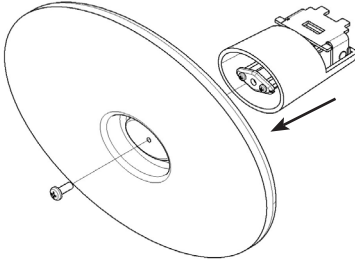
REMOVE ORIGINAL BRACKET

**Please note: This adapter works for a variety of computer monitors. The images below are a representation and may slightly differ from the actual monitor. The assembly process is the same*



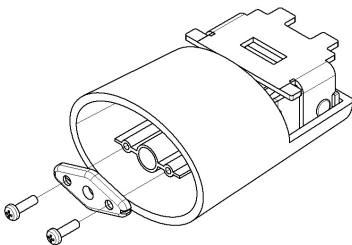
STEP 1

Carefully remove the original monitor stand from the monitor



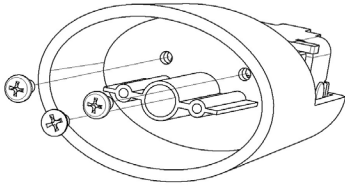
STEP 2

Uninstall the screw from the bottom of the original stand. Then, remove the neck of the stand from the base



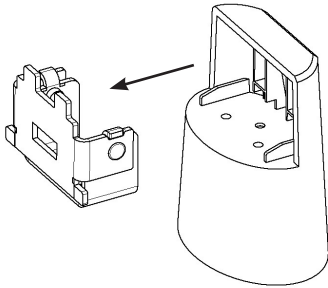
STEP 3

Uninstall screws shown in the picture and remove the metal piece



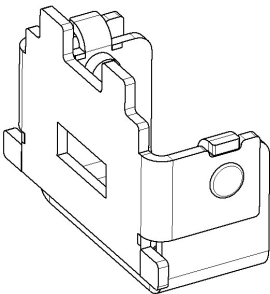
STEP 4

Uninstall all screws from the inside in order to remove the bracket



STEP 5

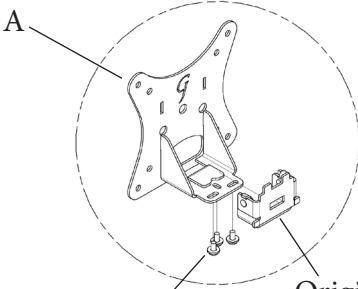
Remove the original bracket from monitor stand



STEP 6

Keep the original stand bracket and screws.

ASSEMBLY STEPS

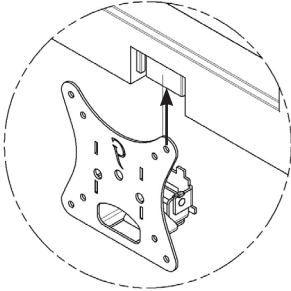


Bolts from Original monitor stand

Original monitor bracket

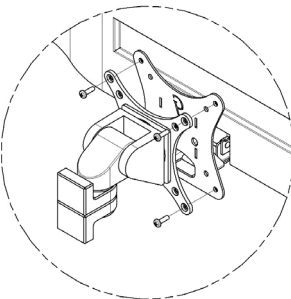
STEP 1

Assembly bracket with A by using original bolts



STEP 2

Install assembled adapter to your monitor



STEP 3

Mount adapter to your arm with 4 screws and 4 nuts (include)



<https://gladiatorjoe.com/>



US: +1 954 271 6612

CDN & International:

+1 514 494 1348



info@gladiatorjoe.com