

# *Superfun*

20" Foldable Fat Tyer Ebike

D1



## **User Manual**

Please read this manual carefully before installation and use. The manual includes the Product Warranty Card. Please keep it well and observe the warnings and precautions marked in the product manual.

## ABLE OF CONTENTS

ABOUT MANUAL .....	1
PRODUCT SPECIFICATION .....	2
PRODUCT OVERVIEW .....	3
SAFETY CHECKLIST .....	4
UNFOLDING AND ASSEMBLING THE E-BIKE FOR THE FIRST TIME .....	5
INSTALL KICKSTAND	
ERECT OF THE HANDLE BAR	
INSTALL THE FRONT WHEEL .....	6
INSTALLATION OF HEADLIGHT AND MUDGUARDS .....	7
ADJUSTING THE BRAKE .....	8
INSTALL THE SADDLE .....	9
ADJUSTING THE E-BIKE .....	10
CHARGING PROCEDURE .....	11
REMOVING THE BATTERY .....	13
FOLDING THE E-BIKE .....	14
USING THE DISPLAY .....	16
HOW TO USE THROTTLE .....	17
APPLICATION OF TRANSMISSION .....	18

HOW TO USE FRONT FORK SHOCK ABSORBER .....	19
HOW TO USE YOUR SUPERFUN E-BIKE .....	20
RECOMMENDED TORQUE VALUES .....	21
DRIVING RANGE .....	22
BEST PRACTICES FOR EXTENDING RANGE AND BATTERY LIFE	
PARKING STORAGE AND TRANSPORT .....	23
CARRYING LOADS MAXIMUM PAYLOAD FOR SUPERFUN .....	24
BASIC BATTERY CHARGING TIPS	
WHEN INSTALLING THE BATTERY ONTO THE BIKE .....	25
CHARGING TIME	
WHEN THE BATTERY IS REMOVED .....	26
CHARGER SAFETY INFORMATION	
BICYCLE CARE .....	27
ERROR DETECTION DISPLAY .....	28
BASIC TROUBLESHOOTING .....	29
USERS ATTENTION ITEMS .....	32
GUARANTEE POLICY	
LIMITED LIABILITY .....	38

Please refer to the real object.

## About Manual

This manual includes details of the product, and information on its operation and maintenance and other halfpipes for owners. Read it carefully and familiarize yourself with the Superfun before using it to ensure safe use and prevent tragic accidents. Be sure to retain this manual as your convenient Superfun information source.

This manual contains many Warnings and Cautions concerning the safe operation and consequences if safe setup, operation and maintenance are not performed. All information in this manual should be carefully reviewed and if you have any questions, you should contact Superfun Ebike Themediasly, not immediately. warnings and cautions contained within the manual and marked by this triangular Caution Symbol should also be given special care. Users should also pay special attention to information marked in this manual beginning with NOTICE.



Because it is impossible to anticipate every situation or condition which can occur while riding, this manual makes no representations about the safe use of bicycles under all conditions. There are risks associated with the use of any bicycle which cannot be predicted or avoided, and which are the sole responsibility of the rider. You should keep this manual, along with any other documents that were included with your bicycle, for future reference, however all content in this manual is subject to change or withdrawal without notice. Superfun Ebike makes every effort to ensure accuracy of its documentation and assumes no responsibility of liability if any errors or inaccuracies appear within. Assembly and first adjustment of your Superfun Ebike requires special tools and skills and it is recommended that this should be done by a trained bicycle mechanic if possible.

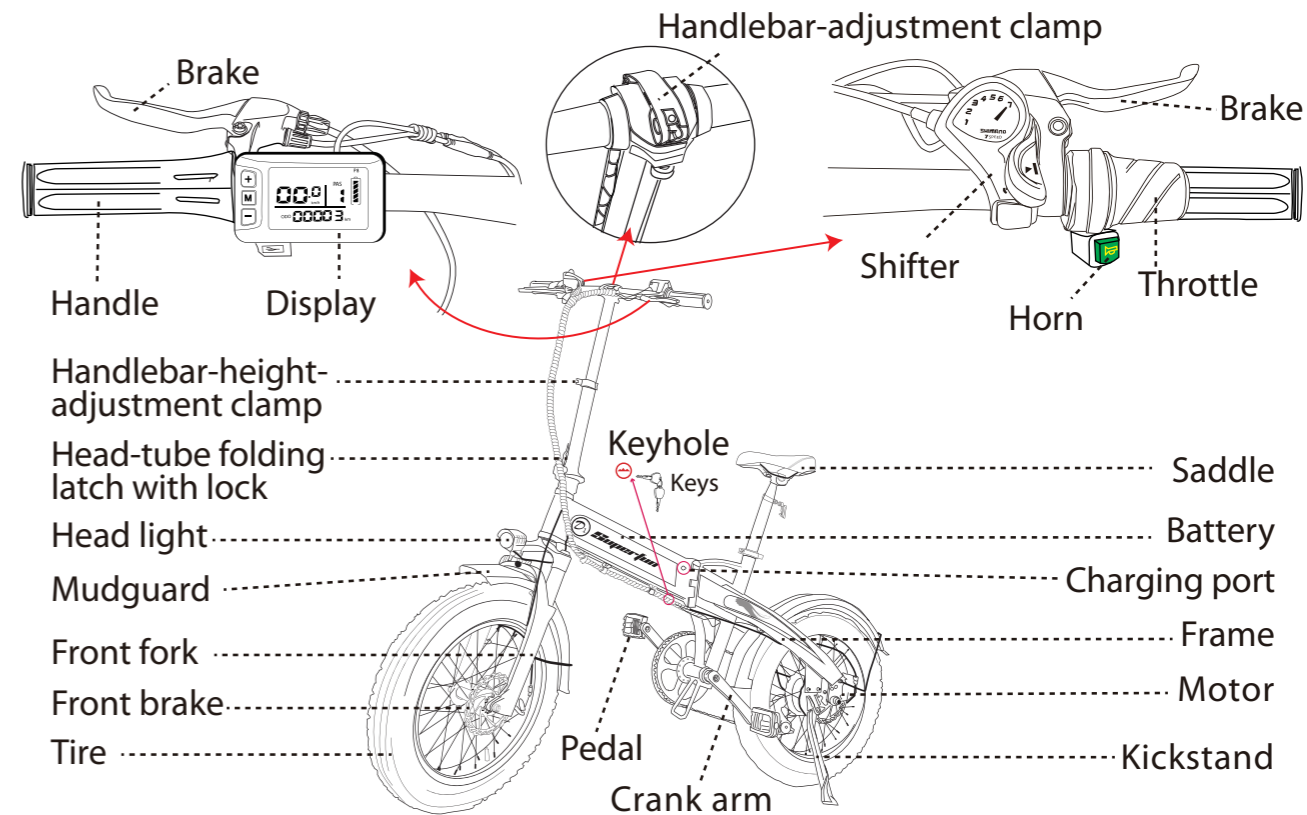
Complies with your state laws when riding the Superfun Ebike. Check with your local police department for requirements Always Wear a Helmet! Helmets significantly reduce the number and safety of head injuries. Always wear a helmet that in your community. Make yourself more visible by wearing bright reflective clothing, keeping your reflectors clean and eye protection. Also check your state laws concerning other protective gear that may be required when riding the Superfun Ebike.

## Product Specification

<b>Battery</b>	36v 12.5Ah Lithium Battery	<b>Front Fork</b>	Alloy Front Suspension Fork
<b>Motor</b>	500W Motor	<b>Bike Frame</b>	A6061 ALUMINUM TIG WELDED FRAME
<b>Display</b>	Colored LCD Display	<b>Brake</b>	160mm Disc Brakes
<b>Derailleur</b>	7-speed Shimano-Altus-7 Speed	<b>Charger</b>	US Standard 42V 2.0A Smart Charger
<b>Speed</b>	Max. 20MPH	<b>Freewheel</b>	Shimano 7 Speed
<b>Pedal Assist</b>	Intelligent 3 Level Pedal Assist	<b>Shifter</b>	SHIMANO 7S
<b>Throttle</b>	Half Twist Throttle	<b>Tires</b>	20" x 4.0" Fat Tire
<b>Charging Time</b>	3 ~ 5Hours	<b>Product Weight</b>	74.9 lbs
<b>Recommended Rider Heights</b>	5.3" ~ 6.4"	<b>Total Payload Capacity</b>	350 lbs

please refer to the real object.

## Product overview



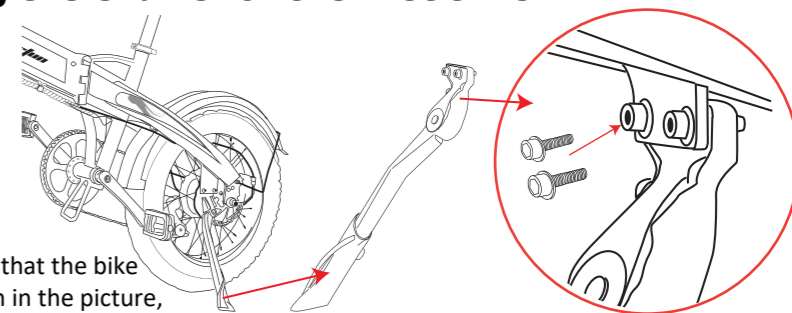
## Safety Checklist

NOTICE: Before every ride it is important to carry out the following safety checks

Safety Check	Basic Steps
Brakes	<ol style="list-style-type: none"> <li>1. Ensure front and rear brakes work properly.</li> <li>2. Ensure brake pads are not over worn and are correctly positioned in relation to the rims.</li> <li>3. Ensure brake control cables are lubricated, correctly adjusted and display no obvious wear.</li> <li>4. Ensure brake control levers are lubricated and tightly secured to the handlebars.</li> </ol>
Wheels and Tires	<ol style="list-style-type: none"> <li>1. Ensure tires are inflated to within the recommended limits displayed on the tire sidewalls.</li> <li>2. Ensure tires have tread and have no BULGES OR EXCESSIVE WEAR.</li> <li>3. Ensure rims run true and have no obvious wobbles or kinks.</li> <li>4. Ensure all wheel spokes are tight and not broken.</li> </ol>
Steering	<ol style="list-style-type: none"> <li>1. Ensure handlebar and stem are correctly adjusted and tightened, and allow proper steering.</li> <li>2. Ensure the handlebar is set correctly in relation to the forks and the direction of travel.</li> </ol>
Chain	<ol style="list-style-type: none"> <li>1. Ensure the chain is oiled, clean and runs smoothly.</li> <li>2. Extra care is required in wet or dusty conditions.</li> </ol>
Cranks and Pedals	<ol style="list-style-type: none"> <li>1. Ensure pedals are securely tightened to the cranks.</li> <li>2. Ensure the cranks are securely tightened and are not bent.</li> </ol>
Derailleurs	<ol style="list-style-type: none"> <li>1. Check that the derailleur(s) are adjusted and functioning properly.</li> <li>2. Ensure shift and brake levers are attached to the handlebar securely.</li> <li>3. Ensure all brake and shift cables are properly lubricated.</li> </ol>
Motor Drive Assembly and Throttle	<ol style="list-style-type: none"> <li>1. Ensure hub motor is spinning smoothly and the motor bearings are in good working order.</li> <li>2. Ensure all power cables running to hub motor are secured and undamaged.</li> <li>3. Make sure the hub motor axle bolts are secured and all torque arms and torque washers are in place.</li> </ol>
Battery Pack	<ol style="list-style-type: none"> <li>1. Ensure battery is charged before use.</li> <li>2. Ensure there is no damage to battery pack.</li> <li>3. Lock battery to frame and check to see that it is secured.</li> </ol>

## Unfolding and assembling the e-bike for the first time

Before unfolding and assembling the e-bike for the first time following the steps below, also read the instructions under “Adjusting the E-Bike” and “Folding the E-Bike” in this manual.

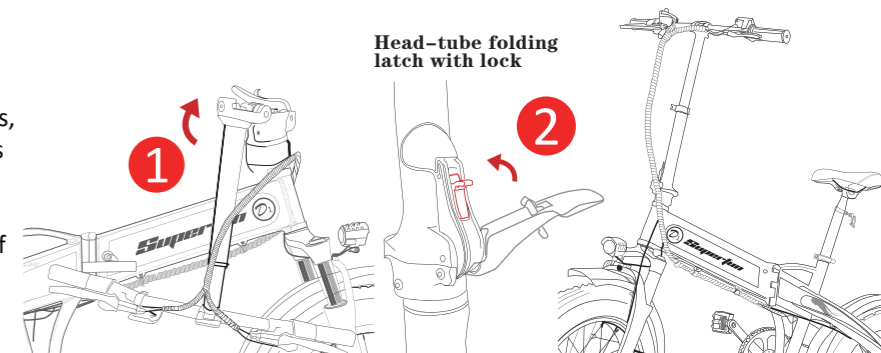


### Install kickstand

After unpacking, first install the kickstand so that the bike can stand up. Find the foot support, as shown in the picture, the foot support is installed on the right side of the rear wheel, on the reserved hole at the end of the frame, align the foot support with the reserved hole on the frame, insert the screw rod, and use Torx screwdriver, tighten the screws. Adjust to the proper angle.

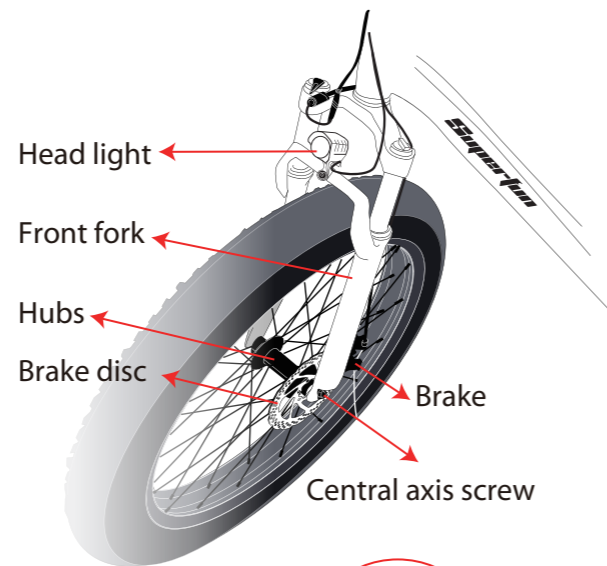
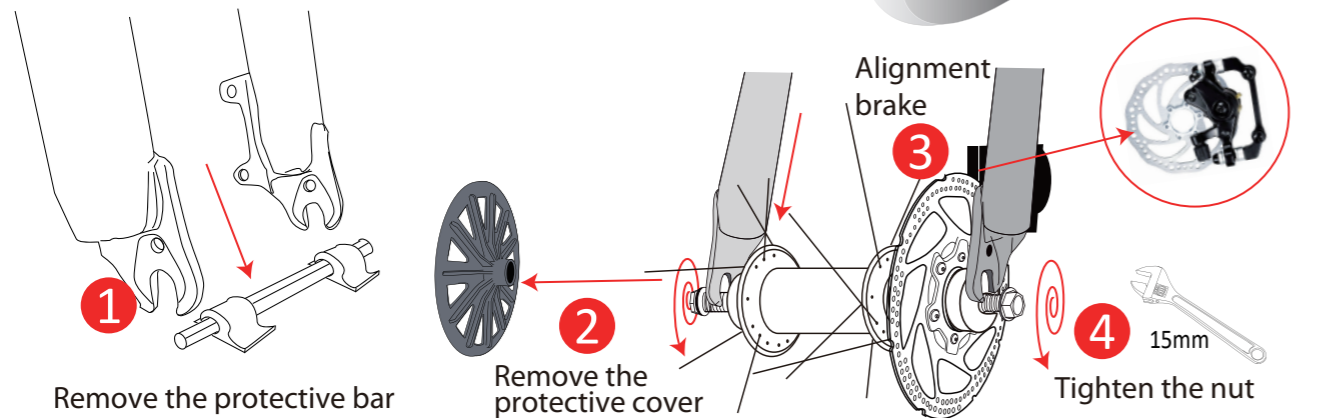
### Erect of the handle bar

After installing the kickstand, erect the bicycle to keep standing, lift the front of the bicycle upwards, and lock the safety buckle. (After the front wheels are installed, adjust the height and angle of the front of the car. After installing the kickstand, erect the bicycle to keep standing, lift the front of the bicycle upwards, and lock the safety buckle. (After the front wheels are installed, adjust the height and angle of the front of the bike.



## Install the front wheel

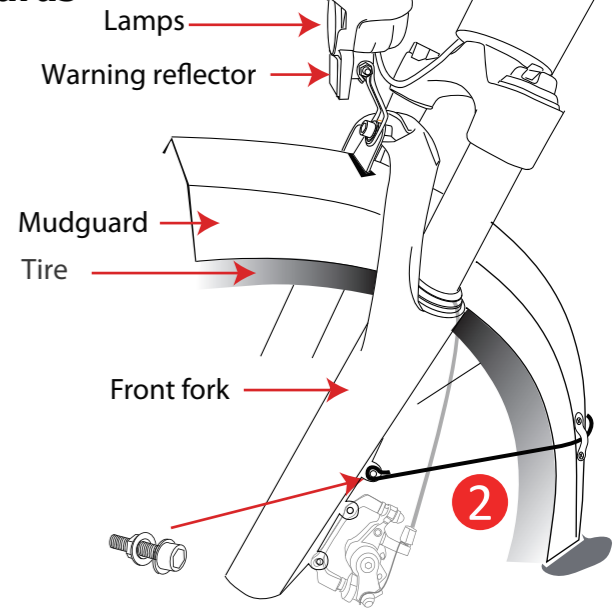
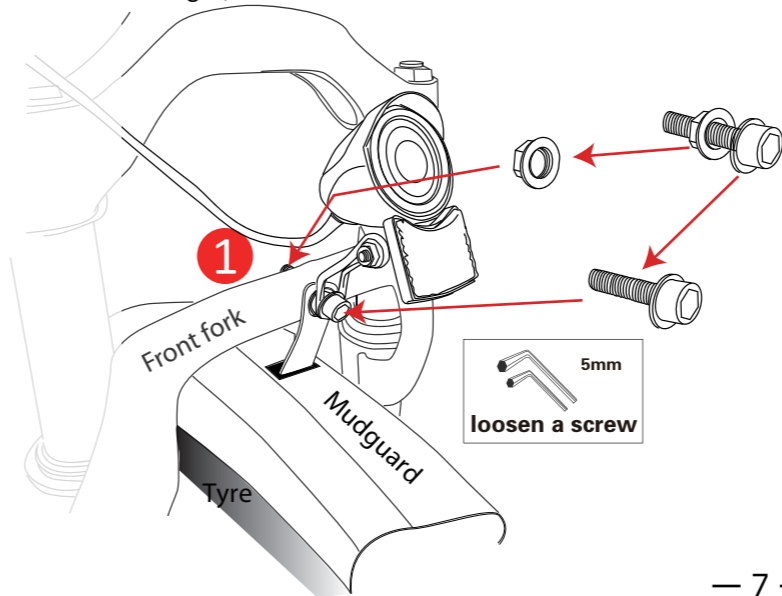
1. Remove the protective bar (white plastic block) on the front fork,
2. Remove the protective cover (black plastic disc) on the front wheel,
3. Raise the front of the bike to a suitable height, put the front wheel in the middle of the front fork, and the brake disc is stuck in the middle of the brake clip (brake lining). At the same time, snap the front wheel center axle screw into the front fork,
4. Tighten the bolts with a 15mm spanner,
5. Disc brake adjustment,
6. Check the tire pressure, if the air pressure is insufficient, please inflate the tire.



## Installation of headlight and mudguards

The fender and headlight are installed on the lower axle screw hole of the front fork, the fender is on the inside side, and the headlight is on the outside.

Use a socket wrench to hold the nut and loosen the screw with a screwdriver and remove the screw. Install the screw passing through the headlight and the bracket and adjust the headlight properly for riding conditions. (Loosen the screw above the headlight to adjust the lighting angle of the headlight)



### Mudguard, short in front, long in back.

After fixing the fender and headlight on the front fork, Fix the fender, hook the fender bracket, Hang it on the reserved hole of the front fork, Tighten the screws with an Allen screwdriver.

## Adjusting the brake

### Tighten the Nut Disc Brake Adjustment

(1). Adjust the brake cable

1. Loosen the screw at the end of the brake cable with a hexagonal crewdriver

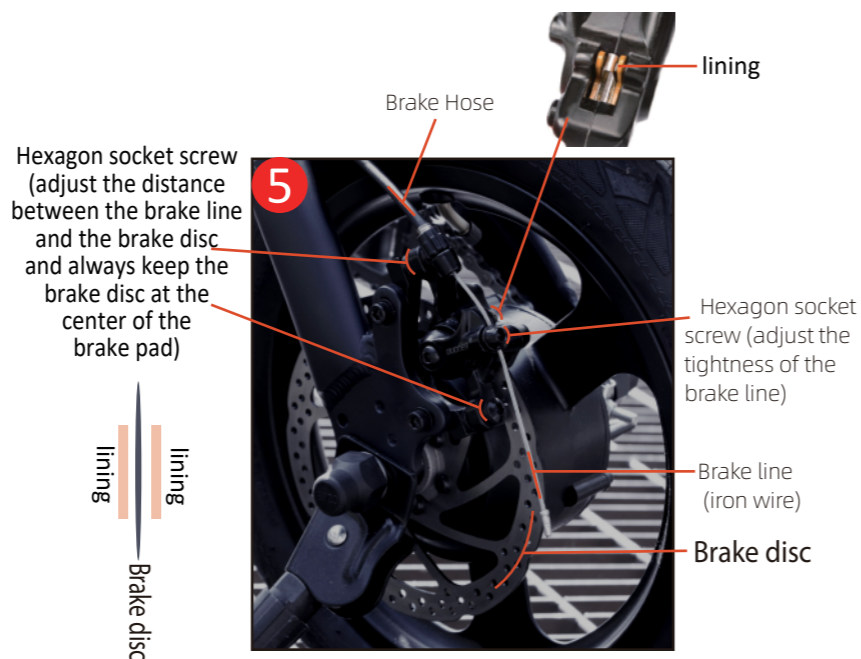
2. After loosening the nuts, place your left hand on the disc brake device and hold the steel wire with your right hand.

3. Lift up the disc brake with your left hand, and pull the steel wire out with your right hand (synch-ronous left and right hands are enough, the best condition is that the brake can clamp the brake disc and the brake lever can return to its original position)

4. Just tighten it after tightening it.

(2). adjust the brake disc:

1. Loosen the upper and lower screws with a hexagonal screwdriver



Do not use the front brake by itself, always apply the rear brake first followed by the front brake and be sure to use both brakes for all braking operations. Front fork failure or loss of control are plausible when the front brake is operated independently for slowing at high speed with cargo loads.



2. After loosening the nuts, manually adjust the position of the brake disc so that the brake disc is at the center of the brake pad; the clearance is moderate, there is no abnormal noise, and the brake disc can be clamped when braking.

3. After adjustment, tighten the set screw.

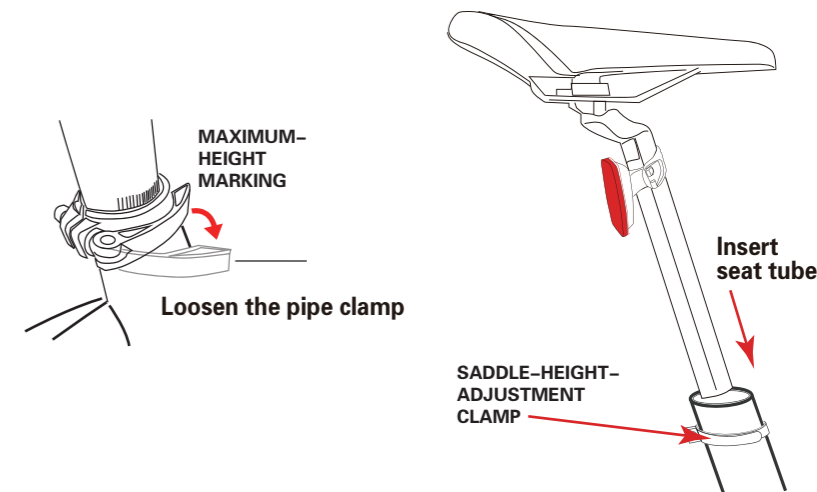


Use a bike pump with a pressure gauge to inflate tires to desired PSI. The recommended pressure for this mode is 20 PSI (1.379 Bar). Do not overinflate or underinflate tires.

## Install The Saddle

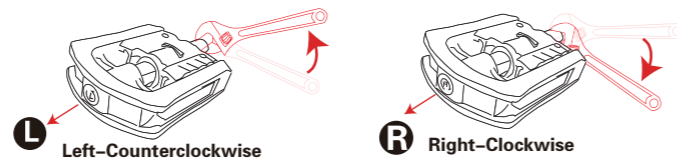
Adjust the saddle height. Loosen the seat clamp, remove the seat post and ensure the seat clamp is centered over the hole in the seat tube. Insert the seat post into the slot, adjust the saddle height to a suitable height and tighten the adjustment nut. When you feel resistance, close the seat tube clamp fully.

Adjust the seat position forwards or backwards. Use an allen wrench to loosen the seat adjustment bolt and make sure to stay within the marked adjustment range.



## Foot pedal installation and folding

Installation: find out the corresponding left and right pedals (the R mark next to the screw hole is the right, and the L mark is the left), tighten the left pedals counterclockwise, and tighten the right pedals clockwise.

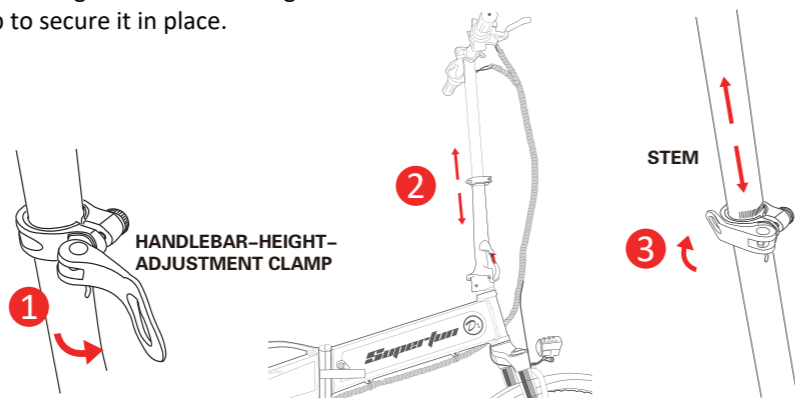


## Adjusting the e-bike

### Adjusting the height of the handlebar

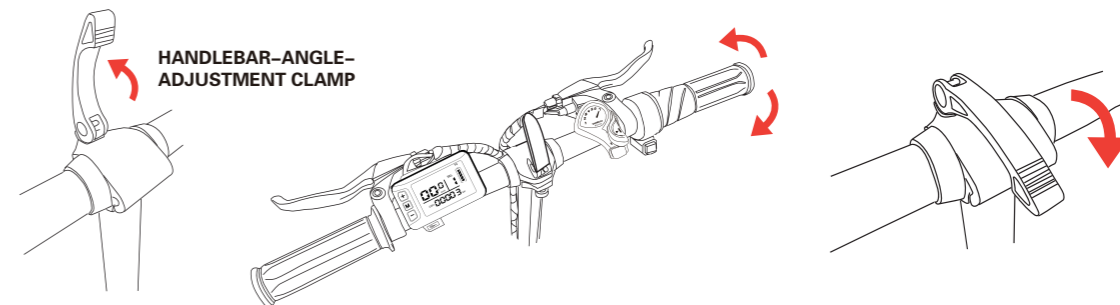
Open the handlebar-height-adjustment clamp and push the stem down or pull it up to select the height that fits you, minding the maximum-height marking on the stem. Close back the clamp to secure it in place.

NOTE: when adjusting the height of the handlebar, mind the height-limit marking on the stem and do not pull it out forcefully as the e-bike's wiring and wire plugs may become loose or disconnect.



## Adjusting the angle of the handlebar

Open the clamp on top of the handlebar (5). Rotate the handlebar to select the desired angle and then close back the clamp to secure it in place.



## Charging Procedure

### Follow these steps for charging your Superfun Bike:

First insert the output end of the charger into the charging port on the bike or on the battery pack and then insert the power plug into the power socket.

While charging, the LED indicator of the charger is red. When the battery is fully charged (after 4-6 h), the LED indicator turns green.

Do not let the charger plugged in for more than 10 hours.

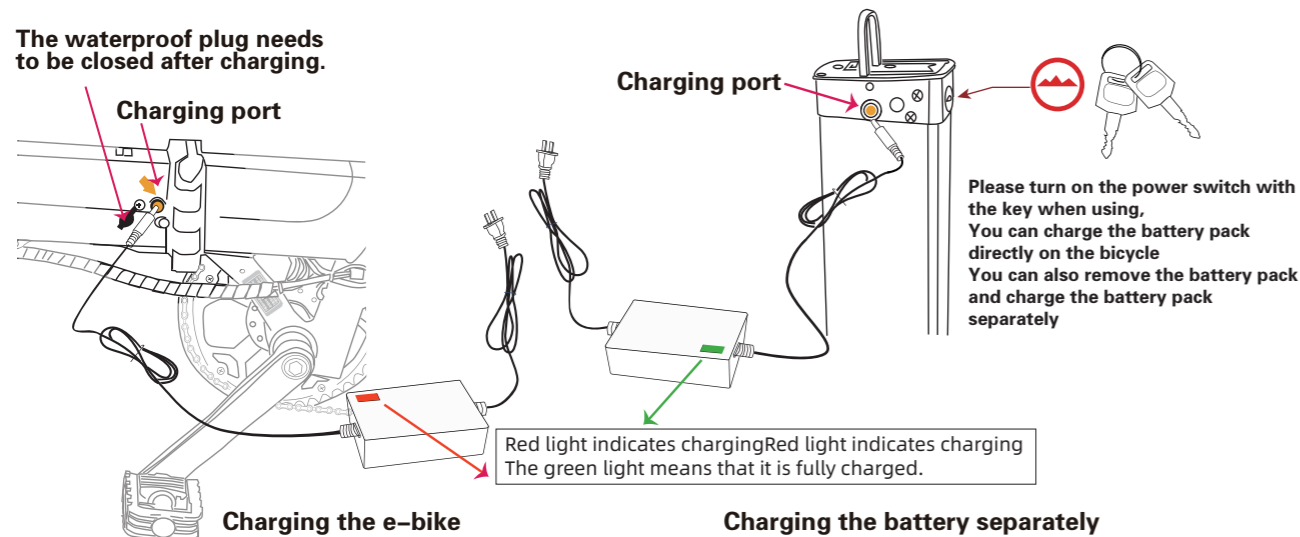
When using the e-bike in the motor-assistance mode, remember to charge the battery before it becomes completely empty.



Method 1: with the battery installed, connect the charger directly to the e-bike's charging port.

Method 2: remove the battery from the e-bike and connect it to the charger.

**The waterproof plug needs to be closed after charging.**

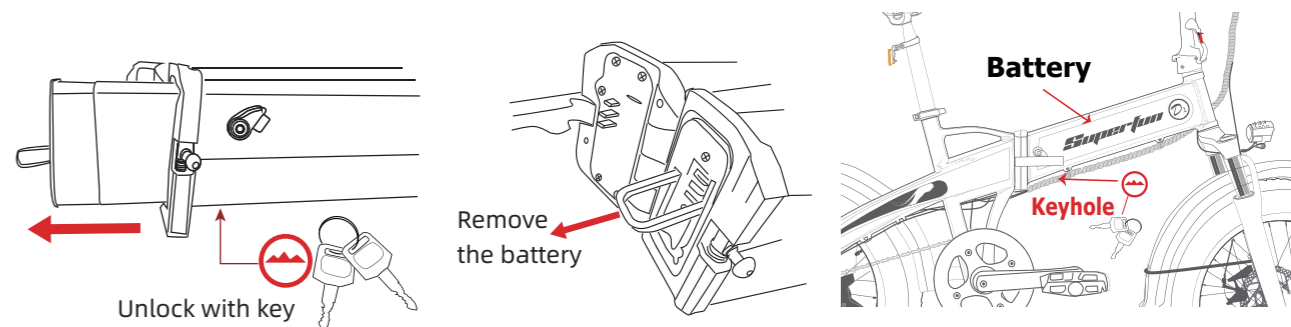


**NOTICE:**1. The charger has slight heat when it is used. Do not place the charger on the cushion, other textiles, paper products and other combustible materials. Please keep it ventilated and not cover it, and keep it away from heat sources.2. It is normal for the charger to have a slight beep during use, and the cooling fan is working.3. Do not insert metal conductors such as screwdriver, wool needle and iron wire into the charging port, and keep them dry and free from moisture and water, so as not to cause short circuit and damage the battery.

## Removing the battery

Open the frame folding joint. Insert the battery key in the lock located on the lower side of the frame near the folding joint and turn it counterclockwise to unlock the battery. Remove the key and pull out the battery pack by its handle.

Put the battery back in the frame and lock it by turning the key clockwise. Remove the key and keep it in a safe place. Make sure the frame folding joint is locked properly before riding the e-bike.



**NOTICE:** Ensure all hardware is tightened properly and all safety checks in the following sections are performed before first use. Always charge your battery in temperatures between 10 and 26 degrees Celsius and ensure the battery and charger are not damaged before initiating charge. If you notice anything unusual while charging, please discontinue charging and use of the bike and for help.



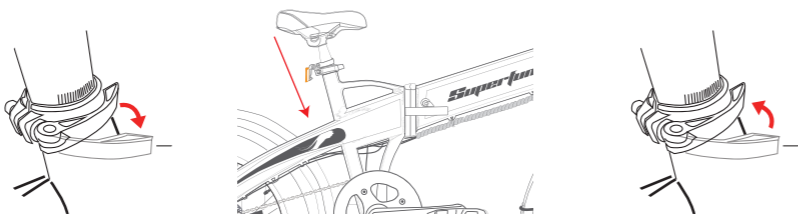
## Folding the e-bike

1) Adjust saddle tube and crank, loose the clamp on saddle tube, push the saddle tube to the bottom, then lock the saddle tube. Loose the clamp tube, open folding handle, then bend the tube.  
2) Open folding handle of frame, then bend.



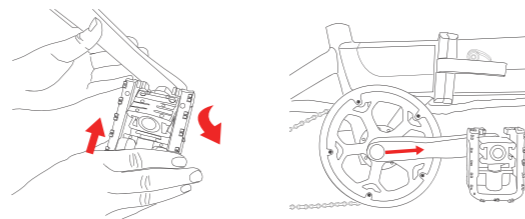
## Lower the seat

Open the seat-height-adjustment clamp, lower the seat completely and close back the clamp.



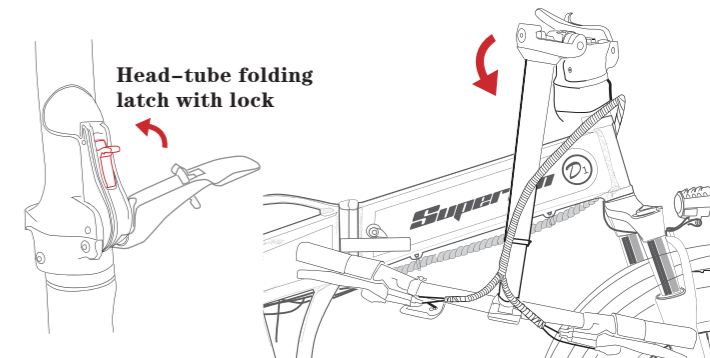
## Fold the pedals

Push the pedal towards the crank arm and then fold it downwards. To unfold the pedal, carefully rotate it back upwards until it clicks back into place. Repeat the same action to fold the second pedal. You can also position the crank arms vertically to make sure they won't get in the way when folding the frame (the left pedal at approximately 6 o'clock and the right one at around 12 o'clock).



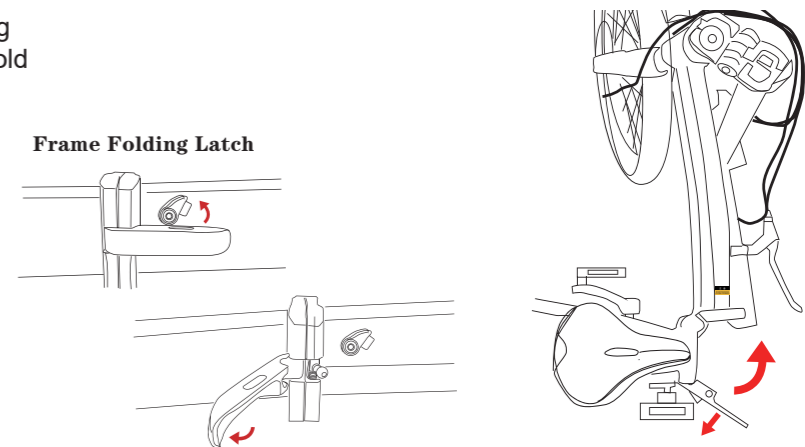
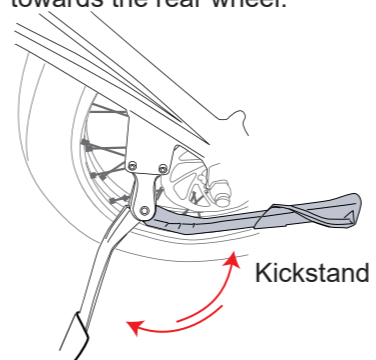
## Fold the head tube

Open the handlebar-height-adjustment clamp, lower the handlebar completely and close back the clamp. Open the safety lock of the head-tube folding latch and then open the latch. Fold the head tube placing the handlebar towards the right side of the front wheel.

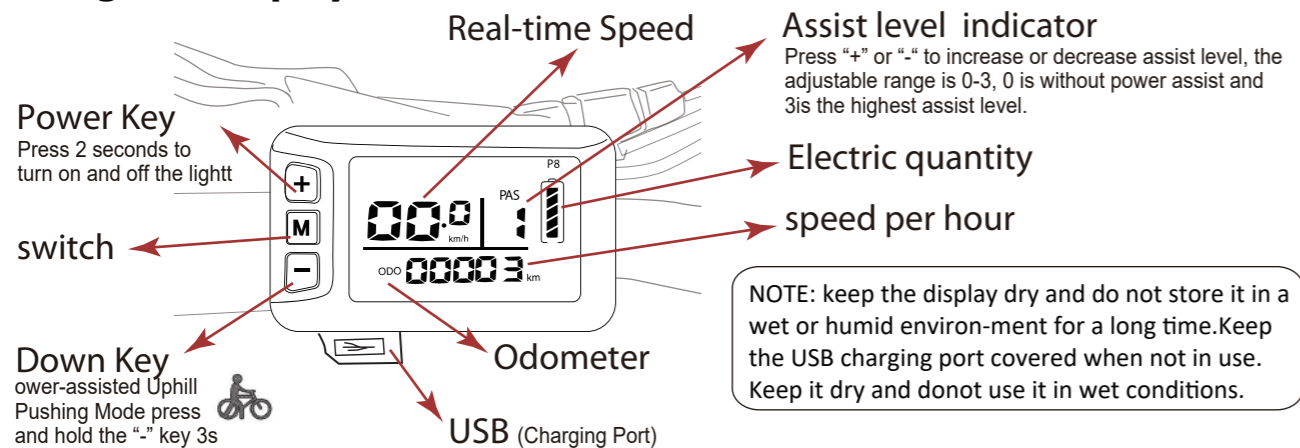


## Fold the frame

Fold up the Kickstand. Open the safety lock of the frame folding latch pulling it up. Open the latch and fold the frame, bringing the front wheel towards the rear wheel.



## Using The Display



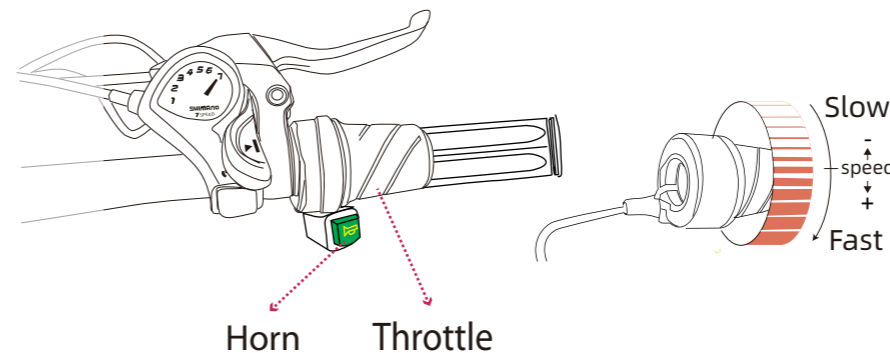
1. Pure Human Riding: Not to turn on the meter. Or press and hold the " M " button turn on the meter, and adjust the gear to 0.
2. Pure Electric Riding: Press and hold the " M " button to turn on the meter. Press "+" or "-" to adjust the gears 1/2/3 (can't be 0), then rotate the handlebar by the right hand.
3. Power-assisted Mode: Press and hold the " M " button to turn on the meter. Press "+" or "-" to an appropriate gear (1/2/3, totally 3 gears, 1/2/3 gear = 10/15/20Mph).
4. Lighting: Press and hold the " M " button to turn on the meter. Press and hold the "+" key to turn on the light on the meter, the headlight and the rear light. Press and hold the "+" key again to turn off the lights.
5. Power-assisted Uphill Pushing Mode: In the state of the meter on, press and hold the "-" key 3s, the meter will display a small dashboard with a speed of about 6 km/h to assist uphill pushing, which mainly works when pushing the

bike uphill. Press the "-" Key again or pinch the brake to cut off the power.

**NOTICE:** 1. Please turn off the meter or adjust the gear to "0" during normal pushing and parking.  
2. When debugging the meter, please suspend the rear wheel to avoid the car starting and rushing forward due to improper operation.

## How to use Throttle

1. Turn on the instrument power supply;
2. Turn on the instrument, increase the gear (1-3), and turn the throttle knob to use pure electric power. (The pure electric function cannot be started at gear 0, increase the gear (1-3);
3. Rotate the knob downward, and gradually increase the strength and speed from top to bottom;
4. Release the knob or brake to stop the electric power output.

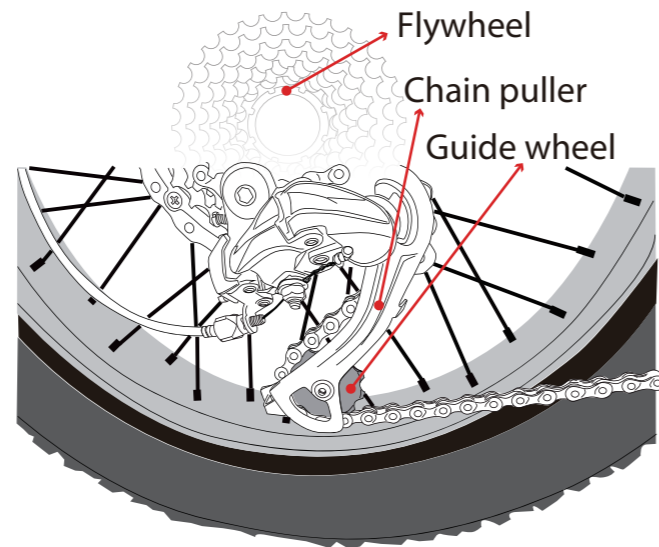
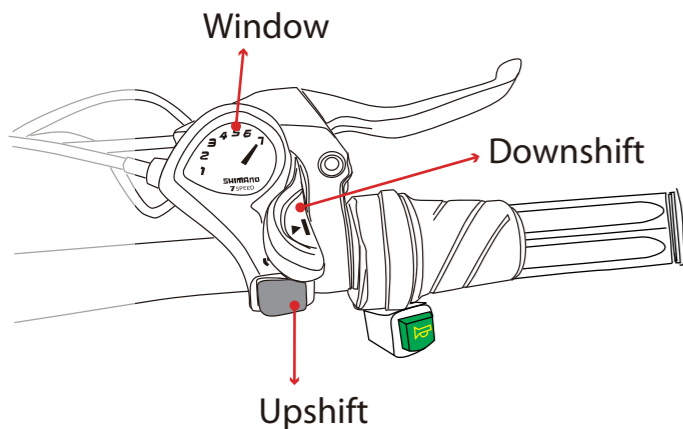


**NOTICE:**

1. For the first time, hang the rear wheel, be familiar with the strength of the handlebar, use it skillfully and cooperate with the brake, adjust the angle of the handlebar to a comfortable position, and then ride on the road.
2. When not using pure electric power, put your palm on the handle sleeve as much as possible, and do not hold the handle with force to avoid accidental touch.

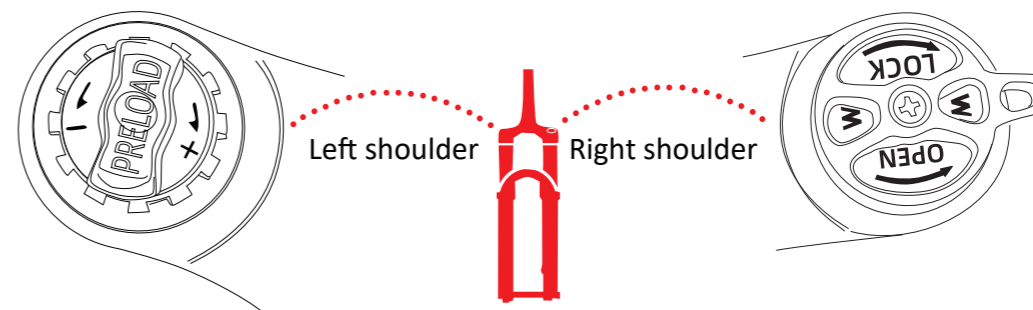
## Application of transmission

- Use low gear uphill to increase power and reduce speed.
- High grade is used on level roads to speed up.



NOTICE:1. Make sure to turn the crank continuously during the rotation of the lever.2. Do not move the speed change handle or adjust the gear when the bicycle is stationary. 3. Don't shift gears on a ramp.

## How to use front fork shock absorber



### Spring preload

#### SOFT AND HARD ADJUSTMENT

According to the weight and road conditions, the soft and hard degree of shock absorber can be adjusted. When the adjusting button is turned to the "+" direction, the front fork becomes hard and the rebound speed is fast. When the adjusting button is turned to the "-" direction, the front fork becomes soft and the rebound speed is slow.

### Deadlock switch

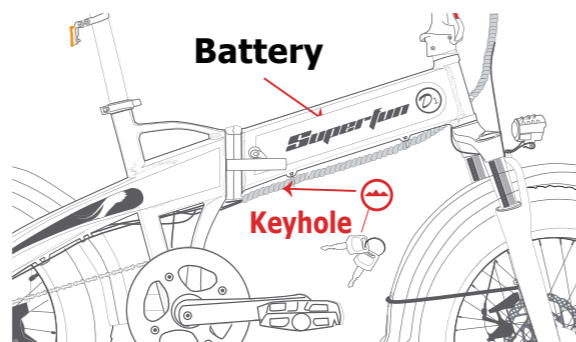
#### OPEN/LOCK

When damping is not needed on level roads or other roads, turn the damping to "lock" and turn off the damping function. It's easier to ride.

## How to use your Superfun E-bike

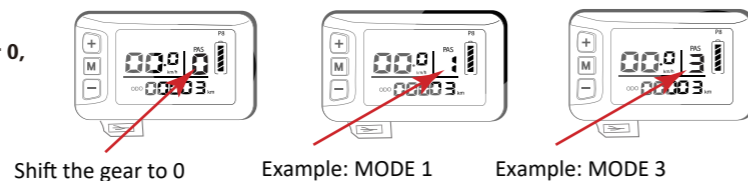
### Pure Human Riding

1. Check and debug the car; Insert the key into the key hole of the battery at the bottom of the frame.
2. Method 1: directly step on and ride without turning on the power; Method 2: Open the code table, shift the gear to 0, and enjoy the ride; (Short press the "-" key to adjust)
3. Turn off the power after the ride.



### Pure Electric Riding

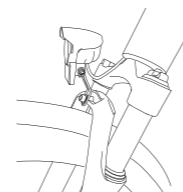
The pure electric function cannot be started at gear 0, Press "+" or "-" to increase or decrease assist level, the adjustable range is 0-3, 0 is without power assist and 3 is the highest assist level. (totally 3 gears)



### Power-assisted Mode

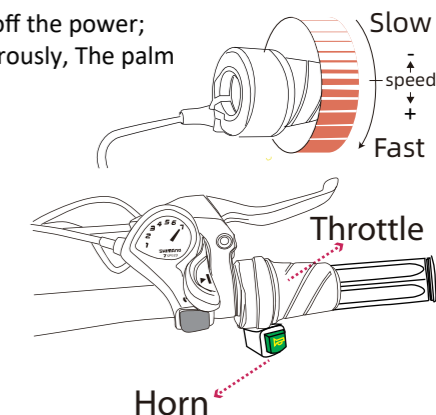
- 1, Check and adjust the bicycle, Press and hold the " M " button to turn on the meter.
- 2, Press "+" or "-" to an appropriate gear (1/2/3, totally 3 gears. 1/2/3 gear = 10/15/20Mph)
- 3, Turn the throttle knob and enjoy your ride;
4. Turn the throttle handle from top to bottom, and the power and speed will increase accordingly;
5. Release the accelerator handle or brake, then stop using the pure electric mode;
6. When the ride is over, turn off the power;

7. When not using the pure electric mode, please adjust the gear to 0, or turn off the power;
8. When not using the pure electric mode, do not hold the throttle handle vigorously, The palm of the hand should be placed on the end handle to avoid accidental touch.



### Application of lamps

Lighting: Press and hold the " " button to turn on the meter. Press and hold the "+" key to turn on the light on the meter, the headlight and the rear light. Press and hold the "+" key again to turn off the lights.



## Recommended Torque Values

Recommended Torque Values	Torque Required (Nm)	Recommended Torque Values	Torque Required (Nm)
Handlebar	18-20	Pedals	35
Stem	18-20	Disk Mounting Bolts	6
Saddle	18-20	Disk Caliper Mount	10
Front Wheel (For Bikes with Bolt on Front Wheel)	16-25	Crank Bolts	40
		Rear Derailleur Cable Pinch	6
Rear Wheel	35-40	Front Derailleur Clamp	7
Bottom Bracket Parts	35-55	Saddle Post Clamp	7

## Driving Range

The range of your Superfun Bike is the distance the bike will travel on a single full charge of the onboard battery pack. The range values in this manual are estimates based on expected usage characteristics. Some of the factors which effect range include changes in elevation, speed, payload, and acceleration, number of starts and stops and ambient air temperatures. Tire pressure and terrain are also important variables to consider.

We suggest that you select a lower assistance level when you first get your Superfun Bike to get to know your bike and travel routes. Once you become familiar with the range requirements of your travel routes, and the capabilities of your Superfun Bike you can then adjust your riding characteristics if you so desire.

The following table provides general estimates and outlines various factors affecting range and their combined estimated effects on range. This table is meant to help owners understand the factors that can increase or decrease range, but Superfun Bike makes no claims to the range that individual users might obtain.

As a parent or guardian, you are responsible for the activities and safety of your child.  
The Superfun Pioneer is not designed for use by children.



## Best Practices for Extending Range and Battery Life

1. Do not climb hills steeper than 15% in grade.
2. Pedal to assist the motor when climbing hills and accelerating from a stop.
3. Avoid sudden starts and stops.
4. Accelerate slowly.

NOTICE: It is recommended that users pay close attention and ride within the following limitations to ensure the hub motor does not overheat or become damaged from excessive loading.

## Parking Storage and Transport

1. Please follow these basic parking, storage and transport tips to ensure your bike is well cared for on and off the road.
2. When pushing the vehicle manually, turn off the power to avoid accident acceleration from the motor.
3. Switch the power off, and any lights to conserve battery. Remove the key from the bike and ensure the battery is locked to the frame or removed and brought with you for security.
4. In public places, your Superfun Bike must be parked in accordance with local rules and regulations.
5. If you must park outdoors in rain, or wet conditions you should only leave your Superfun Bike outside a few hours and proceed to park the bike in a dry location afterwards to allow all the systems to dry out. Much like a regular bike, use in wet conditions mandates a more regular maintenance schedule to ensure your bike does not become rusty, corroded and to ensure all systems are always working safely.
6. Do not park, store, or transport your Dirwin Bike on a rack that is not designed for the size and weight of the bike.
7. Wide tires, as used on Superfun Bike, cannot fit into all bike racks. Please select an appropriate rack for the width of tires used on your bike.
8. Locking up your bike is recommended to ensure your bike is secure and the chance of theft is reduced, Dirwin Bike makes no claims or recommendations on the proper lock hardware or procedures to secure your bike, but we do recommend you take the appropriate precautions to keep your Superfun Bike safe from theft.
9. When storing your bike or carrying your bike on a rack for transport, you can remove the battery pack to reduce the weight of the bike and make lifting and loading easier.

## Carrying Loads

### MAXIMUM PAYLOAD FOR Superfun

The total maximum weight limit of the Superfun(125 Kilograms) includes the weight of the rider as well as clothing, riding gear, cargo, etc. The kickstand is not designed to be used for loading cargo. You **MUST** hold onto the bike whenever loading cargo. Do not assume the bike is stable and balanced when using the kickstand, always hold onto the bike when cargo is being loaded or in place.

**Total maximum payload: 125 Kilograms.**

Do not use the front brake by itself, always apply the rear brake first followed by the front brake and be sure to use both brakes for all braking operations. Front fork failure or loss of control are plausible when the front brake is operated independently for slowing at high speed with cargo loads.



The kickstand is not designed to be used for loading cargo. You **MUST** hold onto the bike whenever loading cargo. Do not assume the bike is stable and balanced when using the kickstand, always hold onto the bike when cargo is being loaded or in place.



## Basic Battery Charging Tips

1. The battery should be recharged after each use. There is no memory effect, so you can charge the battery after short rides without damage.
2. The battery can be recharged on or off the bike.
3. Remove the battery by turning the key and then pulling the battery forward and up until the battery detaches from the mating receptacle.
4. The charger will automatically stop charging when the battery pack is full.

5. Always charge in dry locations and indoors away from direct sunlight, dirt or debris.

6. Do not cover up the charger when plugged in or charging, it air cools and needs to be left in an open space. Do not charge with the charger in the inverted position which can inhibit cooling and reduce the charger's life.

7. Check the charger cables, charger and battery for damage before beginning each charge.

8. The light on the charger will turn green when charge is complete and stay red while the battery charges.

9. Charging normally takes 6~9 hours, however it can take longer when you first receive the bike since the battery pack is balancing.

## When Installing the Battery onto the Bike

1. Do not force the battery onto the receptacle, slowly align and push battery down into the receptacle.
2. Ensure the key is in the locked position before riding and check that the battery has been properly secured to the bike before each use by pulling upwards and testing the security of the pack.

## Charging Time

When the input and output plugs of the charger are connected properly, and the battery is not fully charged, the red charging indicator light should illuminate, showing that the battery is charging. The time that the battery takes to fully charge the battery is dependent on various factors including distance traveled, riding characteristics, terrain, payload, and battery age.

NOTICE: The battery pack can take longer to charge when fully depleted and when the battery is new. As your battery ages you might also experience increased charging times, but this is only expected after 3-5 years of regular use. If your battery does not seem to be charging normally, and taking longer to charge than expected, please discontinue charging and contact Superfun bike immediately.

## When the Battery Is Removed

1. Do not touch the "+" and "-" terminal contacts on the bottom of the battery when the battery is removed from the bike.
2. Be careful not to drop or damage the battery pack when loose from the bike.

## Charger Safety Information

1. Keep charger in a safe place away from children.
2. Fully charge the battery before each use to extend the life of the battery and help to reduce the chance of over-discharging the battery pack. Do not charge the battery with any other chargers than what was originally supplied with your Superfun Bike or a charger purchased directly from Superfun Bike for use with your specific bike serial number, as approved by Superfun Bike.
3. The charger works on 110/220V 50/60 Hz standard home AC power outlets do not open the charger to select voltage input, the charger automatically detects and accounts for incoming voltage.
4. Avoid charger contact with liquids, dirt, debris or metal objects.
5. Store the charger in a location where it cannot suffer damage from falls/impact.
6. The charger should only be used indoors in a dry ventilated area.
7. If you notice a strange smell or the charger or battery are overheating, please stop charging immediately and contact Superfun Bike.
8. Do not yank or pull on the cables of the charger. When unplugging carefully remove both the AC and DC cables by way of pulling on the plastic plugs, not pulling on the cables.

Please take special care in charging of your Superfun Bike in accordance with the above procedures and safety information. Failure to follow proper charging procedures can result in damage to your Superfun Bike, charger, personal property and/or serious injury or death.



## Bicycle Care

To ensure safe riding conditions you must ensure your bike is properly maintained. You should follow these basic guidelines and see your certified bicycle mechanic at regular intervals to ensure your bike is safe for use.

1. Properly maintain batteries by keeping them fully charged when not in use.
2. Never immerse the bike or any components in water as the electrical system may be damaged.
3. Periodically check wiring and connectors to ensure there is no damage and the connectors are secure.
4. To clean, wipe the frame with a damp cloth soaked in a mild non-corrosive detergent mixture. Dry with a cloth.
5. Store under shelter; avoid leaving it in the rain or exposed to corrosive materials. If exposed to rain, dry your bicycle afterwards and apply anti-rust treatment to chain and other unpainted steel surfaces.
6. Riding on the beach or in coastal areas exposes your bicycle to salt which is very corrosive. Wash your bicycle frequently and wipe or spray all unpainted parts with anti-rust treatment. Damage from corrosion is not covered under warranty so special care should be given to extend the life of your bike when used in coastal areas or areas with salty air or water.
7. If the hub and bottom bracket bearings have been submerged in water, they should be taken out and re-greased. This will prevent accelerated bearing deterioration.
8. If the paint has become scratched or chipped in the metal, use touch up paint to prevent rust. Clear nail polish can also be used as a preventative measure.
9. Regularly clean and lubricate all moving parts, tighten components and adjust as required.

Your cables, spokes and chain will stretch after an initial break in period of 80-160 km, while bolted connections can loosen. Therefore, always have a certified bicycle mechanic perform a tune-up on your Superfun bike after your initial break-in period of 80- 160 km (depending on total weight, riding characteristics and terrain). Regular inspections and tune-ups are particularly important for ensuring that your bicycle remains safe and problem-free.

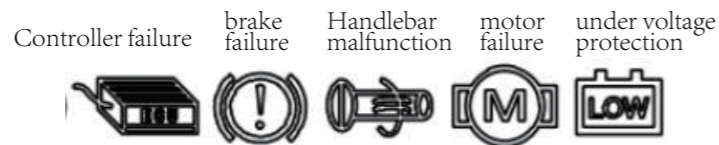
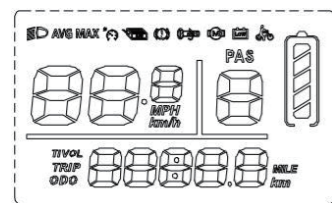




## Error Detection Display

Your Superfun Bike is equipped with an error detection system integrated into the display and controller. In the case of an electronic control system fault an error code should display. The following error codes are the most common and can aid in troubleshooting.

Error Code	Definition	Error Code	Definition
00	Normal status	22	Turning handle failure
02	Brake	23	Controller failure
21	Abnormal current	10	Communication receiving failure
25	Abnormal brake	16	Electric lock short circuit
24	The hall signal of the rotary motor is abnormal		



When the error code is displayed, please promptly remove the fault. After the fault occurs, the electric bike will not be able to ride normally.

## Basic Troubleshooting

Symptoms	Possible Causes	Most Common Solutions
It doesn't work	<ol style="list-style-type: none"> <li>1. Insufficient battery power</li> <li>2. Faulty connections</li> <li>3. Battery not fully seated in tray</li> <li>4. Improper turn on sequence</li> <li>5. Brakes are applied</li> </ol>	<ol style="list-style-type: none"> <li>1. Charge the battery pack</li> <li>2. Clean and repair connectors</li> <li>3. Install battery correctly</li> <li>4. Turn on bike with proper sequence</li> <li>5. Disengage brakes</li> </ol>
Irregular acceleration and/or reduced top speed	<ol style="list-style-type: none"> <li>1. Insufficient battery power</li> <li>2. Loose or damaged throttle</li> </ol>	<ol style="list-style-type: none"> <li>1. Charge or replace battery</li> <li>2. Replace throttle</li> </ol>
When powered on the motor does not respond	<ol style="list-style-type: none"> <li>1. Loose wiring</li> <li>2. Loose or damaged throttle</li> <li>3. Loose or damaged motor plug wire</li> <li>4. Damaged motor</li> </ol>	<ol style="list-style-type: none"> <li>1. Repair and or reconnect</li> <li>2. Tighten or replace</li> <li>3. Secure or replace</li> <li>4. Repair or replace</li> </ol>
Reduced range	<ol style="list-style-type: none"> <li>1. Low tire pressure</li> <li>2. Low or faulty battery</li> <li>3. Driving with too many hills, headwind, braking, and/or excessive load</li> <li>4. Battery discharged for long period of time without regular charges, aged or damaged</li> <li>5. Brakes rubbing</li> </ol>	<ol style="list-style-type: none"> <li>1. Adjust tire pressure</li> <li>2. Check connections or charge battery</li> <li>3. Assist with pedals or adjust route</li> <li>4. Replace the battery</li> </ol>

Wheel or motor makes strange noises	1. Charger not well connected 2. Charger damaged 3. Battery damaged 4. Wiring damaged	1. Adjust the connections 2. Replace 3. Replace 4. Repair or replace
Wheel or motor makes strange noises	1. Damaged motor bearings 2. Damaged wheel spokes or rim 3. Damaged motor wiring	1. Replace 2. Repair or replace 3. Repair or replace motor

**The following safety notes provide additional information on the safe operation of your Superfun Bike and should be closely reviewed. Failure to review these notes can lead to serious injury or death.**

1. All users must read and understand this manual before first use. Additional manuals components used on your bicycle may also be provided and should be read before use in addition to this manual Ensure that you comprehend all instruction and safety notes/warnings.
2. Ensure the bike fits you properly before first use.You may lose control or fall if your bike is too big or too small
3. Alwayswear an approved bicycle helmet whenever using this product and ensure that all helmet manufacturer instructions are used for fit and care of your helmet Failure to wear a helmet when riding may result in serious injury or death.
4. Ensure correct tightening and setup is performed on your bicycle before first and checked regularly.
5. It is your responsibility to familiarize yourself with the laws and requirements of operation of this product in the area(s) where you ride.
6. Ensure handle bar grips are not damaged and properly installed. Loose or damaged grips can cause you to lose control and fall.
7. Do not use this product with standard bicycle trailers,stands or bicycle racks Contact Superfun Bike to check if your equipment will work with the bicycle.

8. Off-roadriding requires close attention and specific skills and presents variable conditions and hazards which accompany the conditions. Wear appropriate safety gear and do not ride alone in remote areas. Check local rules an regulations if off-road riding is allowed.
9. Engaging in extreme riding is extremely dangerous and should be avoided.Although many articles/advertisements/ catalogue depict extreme riding this is not recommended nor permitted, and you can be seriously injured or killed if you perform extreme riding.
10. Bicycles and bicycle parts have strength and integrity limitations and extreme riding should not be performed or you risk damaging the components or becoming seriously injured or killed
11. Failure to confirm proper installation, compatibility proper operation or maintenance of any component or accessory can result in serious injury or death.
12. After any incident,you must consider your bike unsafe to ride until you consult with a certified bicycle mechanic’s comprehensive inspection.
13. Failure to properly charge,store or use your battery will void the warranty and may cause a hazardoussituation.
14. Extreme care should be taken when using the pedal assistance sensor and throttle on this product. Ensure you understand and are prepared for the power assistance to engage as soon as pedaling is underway.
15. You should check the operation of the brake inhibitor switches before each ride.The brake system is quipped with an inhibitor which shuts down the power to the electric motor whenever the brakes are engaged.Check proper operation of brake switches before riding.
16. User must understand the operation of the twist throttle and pedal assistance sensors before using, and take ample care in their usage in respect to traveling at speeds appropriate for usage area and user experience level.Always use the lowest assist level until you are comfortable with the bike and feel confident in controlling the power.
17. Any aftermarket changes to your Superfun Bike not expressly approved by Superfun Bike could void the warranty and create an unsafe riding experience
18. Because electric bicycles a heavier and faster than normal bicycles, they require extra caution and care while riding.
19. Take extra care while riding in wet conditions. Feet or hands can slip in wet conditions and lead to death or serious injury from a fall.
20. Do not remove front or rear reflectors,pedal reflectors or bell.

## Users attention items

**Pay attention to the safety in the process of use, do not plug and unplug the display when it is powered on.**



Avoid bumping the display.



The film used for the display is waterproof film, please do not tear it, so as not to affect the waterproof performance of the display.



Please don't change the background parameter setting of the display at will, otherwise normal riding can't be guaranteed.



When the display cannot be used normally, it should be sent for repair as soon as possible.

## Guarantee Policy

**Product: D1**

**Brand: *Superfun*®**

This policy establishes the rules and conditions under which all components and workmanship of the product is guaranteed for a period of 30days to 365days ,the warranty would be started since the initial owner has received it, proven with receipt or invoice.

All claims for the purposes of this warranty must be made within the period to be valid. If the product is within the warranty period, defective parts will be replaced. If the case calls for a full replacement of the product, an exchange will be made, so long as proof of purchase is valid. The customer will have a maximum of 30 days for proper product review and to request an exchange.

## 1. Warranty Claims

If you believe your bike has a warranty issue, your first point of contact should be the official website or online retailer where you purchased your bike. Proof of purchase and photos or videos of the damaged product are required with any warranty request. Before making a warranty claim, we suggest that you first contact us at support @superfunbike.com as there is a proper solution for your problem. Valid warranty claims will be processed through Superfun for a period of 1 years from the date of original retail purchase.

Superfun will not ship any parts to the customer without checking photos or videos of the damaged product. The customer needs to provide us with evidence via email.

Superfun will only provide free replacement parts( Customers need to be charged for shipping). We do not reimburse any labor costs incurred by the repair service.

## 2. Shipping Damage Claims

In rare cases, the product will be damaged in the processing of shipping. If shipping damage occurs, please contact support@superfunbike.com and provide us with photos or videos.

All free accessories are not covered to be claimed for replacement or compensation if there are scratches during transportation.

NOTICE: We only accept shipping damage claims within seven (7) days of your receipt of the E-bike.

### 3. Terms

To validate the guarantee, the customer must:

- Present proof of purchase in the form of a receipt or invoice. Date of purchase must be included and legible, or active the warranty card and send email to Superfun.

To enact this duly-filled policy:

- Present the product at the store of purchase under claim of warranty. The store will act in accordance to its own procedures and policies.

The repair time will be no more than 30 calendar days from the date of receipt from the authorized service center. If, after technical review, it is discovered that the product is not covered, the customer will be notified. Should the product be repaired, the customer will be responsible for covering the cost of work done and shipping costs incurred.

**The guarantee is automatically cancelled if:**

#### **1)About Frame**

Superfun reserves the right to use scratch and dent stock when replacing a frame under this warranty. The defective frame can be replaced with the same or most nearly comparable one at the discretion of Superfun.

Frame issues that are not covered under this warranty include but are not limited to:

Corrosion

Paint fade, scratches, impact marks

Impact damage

Non-reversible modification ( drilling/welding)

Chain-guard mounts to the frame if applicable

#### **2)About Battery**

Superfun battery is covered by a 1-year limited warranty.

During 1 years of service – A defective battery will be repaired or replaced at no cost to the customer. The warranty period for a repaired or replaced battery remains unchanged based on the original purchase date.

No cash reimbursement will be made.

The defective battery will be assessed in the sole discretion of Superfun.

This limited warranty does not cover:

1. Defects or damage resulting from accident, abuse, misuse, abnormal use ( including but not limited to stunt riding, racing or other similar activities not consistent with the intended use of the products), improper storage, abnormal exposure to liquid, chemicals, moisture, abrasives, sand or dirt, neglect, or abnormal physical, electrical or electromechanical stress;
  2. Scratches, dents and cosmetic damage, unless caused by Superfun;
  3. The product that has the serial number or the bar code removed, defaced, damaged, altered or made illegible;
  4. Ordinary wear and tear;
  5. 5.Defects or damage to the products caused by the use of accessories, products, or ancillary/peripheral equipment not furnished or approved by Superfun with the products;
  6. Defects or damage caused by the assembly, testing, operation, maintenance, installation, service, repair, or adjustment in a manner that varies from Assembly Instructions & Owners Manual;
  7. Defects or damage resulting from external causes such as collision, fire, flooding, windstorm, lightning, earthquake, exposure to weather conditions, theft, blown fuse or improper use of any electrical source;
  8. Products used or purchased out of the United States;
- In addition, with respect to the battery, this limited warranty does not cover defects or damage:
- 9.1 Caused by charging by a battery charger not intended or appropriate for use with the battery or the improper use of a battery charger;
  - 9.2 Any of the seals on the battery are broken or show evidence of tampering;
  - 9.3 The battery used in other equipment ( not the Superfun ebike);

### **3)About Parts & Components**

Original Superfun parts & components are covered by a 1-year limited warranty. Any of damaged parts caused by people is not covered.

The bike's owner will be responsible for the shipping costs of the spare parts for warranty.

This limited warranty does not cover:

1. Damage resulting from normal wear and tear (not the result of defects in workmanship or materials) is not covered.

Wear and tear will be assessed by Superfun. Parts not covered include but are not limited to:

1.1 Brake Pads

1.2 Rotors

1.3 Spokes

1.4 Tires/Tubes

1.5 Chains

1.6 Chain Rings

1.7 Cassette

1.8 Crank set

1.9 Corrosion on electrical components is not covered by the warranty.

1.10 Damage or deterioration of the surface finish, appearance, or beauty of the product.

1.11 The limited warranty is expressly limited to the replacement of a defective (in materials and/or workmanship) handlebar, seat post, saddle, brakes, lights, crank-set, pedals, rims, freewheel, cassette, derailleur, shifter, wiring harness, kickstand, reflectors, and hardware.

### **4)About Labor charges for part replacement**

1. Defects or damage resulting from accident, abuse, misuse, abnormal use (including but not limited to stunt riding, racing or other similar activities not consistent with the intended use of the products), improper storage, improper exposure to liquid, chemicals, moisture, abrasives, sand or dirt, neglect, or abnormal physical, electrical or electro-mechanical stress.

2. Scratches, dents and cosmetic damage not caused by Superfun.

3. The serial number or the bar code of the products that is removed, defaced, damaged, altered or illegible.

4. Defects or damage to the products caused by the use of accessories, products, or ancillary/peripheral equipment not furnished or approved by Superfun.

5. Defects or damage caused by improper assembly, test, operation, maintenance, installation, service, repair, or adjustment in a manner that varies from Assembly Instructions & Owners Manual.

6. Defects or damage resulting from external causes, such as collision, fire, flooding, windstorm, lightning, earthquake, exposure to weather conditions, theft, blown fuse or improper use of any electricity.

7. Products used or purchased out of the United States.

This guarantee does not include product installation and does not cover damage caused by use of the product.

## Limited Liability

Superfun wil never be responsible for an amount greater than the purchase price of the product and in no event shabe liable to the customer for any special, indirect, accidental damage or consequential damages of any kind.

### Consumer Data

First Name:

Email Address:

Address:

Purchase Date:



Ride more. Having superfun.

### **Need help?**

We're here for you every day  
from 7 a.m - 9 p.m.CST

US office/warehouse: 14261 Proctor Ave unit B, La Puente. CA 91746

Factory address: 1No151Tiegang Reservoir Road, Tiegang Community  
Xixiang Street, Baoan District, Shenzhen City

Email: [support@superfunebike.com](mailto:support@superfunebike.com)  
[www.superfunebike.com](http://www.superfunebike.com)