

# How to configure Gin 90 Series

Select a Gin 90 Fire Table for your project in just 4 easy steps!



## Step 1: Choose your table height



**Gin 90 Bar**  
L 89.4 x W 43.2 x H 41.1 (in)  
L 2272 x W 1098 x H 1045 (mm)



**Gin 90 Dining**  
L 89.4 x W 43.2 x H 29.3 (in)  
L 2272 x W 1098 x H 745 (mm)

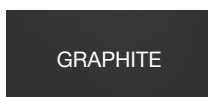


**Gin 90 Chat**  
L 89.4 x W 43.2 x H 23.4 (in)  
L 2272 x W 1098 x H 595 (mm)



**Gin 90 Low**  
L 89.4 x W 43.2 x H 13.6 (in)  
L 2272 x W 1098 x H 345 (mm)

## Step 2: Select your finish



*New Finish!*

### Concrete


Our commercial-grade concrete is exceptionally durable yet incredibly lightweight. Incorporating Fluid Technology, our concrete is water, stain, UV, and scratch-resistant and repels dust and debris for an easy clean.

### Teak wood

Our new industry-exclusive teak finish is made of the strongest and most durable hardwood available. Its natural oil repels water keeping it from warping, cracking, or becoming brittle.

### Step 3: Select your fuel type

The ideal fuel type is determined by the application (indoor/outdoor), installation needs, and operation preferences.

Fuel type	e-NRG Bioethanol	Natural Gas	Propane
Application	Indoor & Outdoor	Outdoor Only	Outdoor Only
Heat output	15,000 BTU/h	65,000 BTU/h Best for colder environments	65,000 BTU/h Best for colder environments
Operation preference - Refueling	Ethanol burners are a stainless steel tank that holds liquid, plant-based fuel. To refill the burner, you place the jerry can nozzle into the "filling point" and push the release button on the jerry can.	No refueling, ever.	Propane tanks are readily available for purchase at local gas stations, hardware stores, and grocery stores. Connecting the tank takes just a few steps. Download our gas manual to learn more.
Operation preference - Lighting	Easy to light as a candle. 1. Extend the lighting rod and dip into the fuel tank. 2. Light the end of the lighting rod and dip back into the tank.	Operate with a simple push-button ignition from the vessel's control panel.	Operate with a simple push-button ignition from the vessel's control panel.
Installation	No utility connections required.	Requires a gas line and a plumber to install.	Chat, dining, and bar include a built-in storage system. 

### Step 4: Select an optional accessory

Complete your setting with **Tank**, an optional accessory which functions as propane storage, a side table, or stool.



Tank (Concrete)



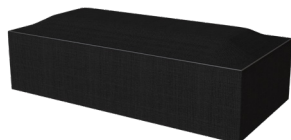
Tank (Teak)

### Included accessories

All Gin 90 models include the accessories needed to operate and protect your table for years to come.



Fire Screen



Winter Storage Bag  
(Outdoor models only)



Black Glass Charcoal



Jerry Can, Lighting Rod, Lighter  
(Ethanol models only)

Visit [ecosmartfire.com](http://ecosmartfire.com) to learn more about Gin 90 Series!