



BLAZE GRILLS & COMPONENTS

GAS | CHARCOAL | ELECTRIC

REV: 11/11/22

TABLE OF CONTENTS

GAS GRILLS

Prelude LBM Series 2
 LTE Series 4
 LTE Marine Grade Series 6
 Professional Series 8
 Customize Your Grill 10
 Griddle 11

CHARCOAL GRILLS

Charcoal Stainless Steel 12
 Charcoal Aluminum Kamado 12

ELECTRIC GRILLS

Electric Grill 13

BUILT-IN GRILL COMPONENTS

Vent Hood 14
 Side Burners 15
 Door Components 16, 21
 Drawer Components 17, 21
 Refrigeration 18, 20
 Ice Maker & Beverage Center 19

BARRY'S RESTORE IT ALL PRODUCTS

Sprays & Specialty Items 22

LITERATURE

Item No	Description	Retail
BLAZE	Blaze Grills	N/C

PRELUDE LBM GAS GRILLS



25" - 3 BURNER
BLZ-3LBM



32" - 4 BURNER
BLZ-4LBM



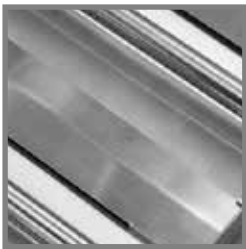
CART

FEATURES

- 304 Stainless Steel Construction
- Double Lined Hood
- 8mm Stainless Steel Rod Cooking Grates
- 14,000 BTU Stainless Steel Tube Burners
- Heat Zone Separators
- Heavy Duty Stainless Steel Flame Tamers
- Full Size Drip Tray
- Built In Thermometer
- Warming Rack Included
- Push N' Turn Flame Thrower Primary Ignition
- Secondary Manual Flash Tube Ignition
- Available NG or LP (Ships with opposite gas conversion kit)
- Lifetime Warranty

CART FEATURES

- Stainless Steel construction is durable in outdoor conditions
- Adds practical storage for your BBQ accessories
- 2 side shelves provide a convenient work area while grilling
- 4 heavy duty casters allow you to reposition the grill as needed



Removable Heat Zone Separators

Heat zone separators help seclude a cooking area to maintain varying temperature zones.



Push N' Turn Flame Thrower Primary Ignition w/Backup Flash Tube

Simply push in the control knobs and ignite each burner individually.



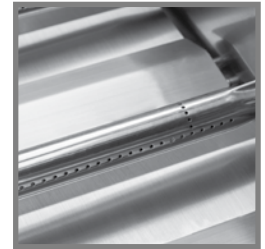
Perforated Flame Stabilizing Grids

Designed to minimize flare-ups, the perforated flame stabilizing grids also serve as excellent protection for the burners below.



Heavy Duty 8mm Round Cooking Rods

Durable 8mm stainless steel cooking rods maximize your searing capabilities.



Stainless Steel Tube Burners

Each burner delivers an impressive 14,000 BTU's of cooking power.

SPECIFICATIONS

Item #	# of Burners	BTU's	Main BTU's	Cooking Surface	Infrared Back Burner	Rotisserie Kit
BLZ-3LBM (25")	3	14,000 BTU	42,000	560 sq. in.	Not Available	Not Available
BLZ-4LBM (32")	4	14,000 BTU	56,000	740 sq. in.	Not Available	Not Available

PRELUDE LBM GAS GRILLS



GRILL HEADS

LP Grills come set up for 20 lb propane tanks. When using bulk propane you must order BLZ-32-050 Low Pressure Regulator.

Item #	Description	Cut-Out Dimensions	Retail
BLZ-3LBM-NG	25" LBM Grill, 3 Burner - NG	8 ½"H x 23 ¼"W x 21 ¼"D	\$1,359.99
BLZ-3LBM-LP	25" LBM Grill, 3 Burner - LP	8 ½"H x 23 ¼"W x 21 ¼"D	\$1,359.99
BLZ-4LBM-NG	32" LBM Grill, 4 Burner - NG	8 ½"H x 30 ⅝"W x 21 ¼"D	\$1,569.99
BLZ-4LBM-LP	32" LBM Grill, 4 Burner - LP	8 ½"H x 30 ⅝"W x 21 ¼"D	\$1,569.99

CARTS

(Requires Grill Head) 304 heavy duty stainless steel double door w/locking casters and fixed side shelves.

Item #	Description	Retail
BLZ-3-CART	25" Cart	\$589.99
BLZ-4-CART	32" Cart	\$649.99

WEATHER COVERS

Cover is made with a water resistant vinyl and has a felt backing that will not scratch the stainless steel exterior of your grill.

Item #	Description	Retail
3BICV	25" Weather Cover, Grill Head	\$54.99
4BICV	32" Weather Cover, Grill Head	\$64.99
3CTCV	25" Weather Cover, Cart and Grill	\$64.99
4CTCV	32" Weather Cover, Cart and Grill	\$74.99

INSULATED JACKETES

(Used when installing the grill into a combustible island structure) Double Lined

Item #	Description	Cut-Out Dimensions	Retail
BLZ-3-IJ	25" Grill Insulated Jacket (Assembly Required)	9 ⅝"H x 25 ⅝"W x 22 ¼"D	\$539.99
BLZ-4-IJ	32" Grill Insulated Jacket (Assembly Required)	9 ⅝"H x 33"W x 22 ¼"D	\$599.99

ACCESSORIES

Item #	Description	Retail
BLZ-IR	Infrared Searing Burner, 14,000 BTU's (Sear Burner Replaces a Regular Burner)	\$109.99
BLZ-SMBX	Smoker Box (Slides Between Flame Tamer and Grates)	\$49.99
BLZ-XL-SMBX	Smoker Box Extra Large (Slides Between Flame Tamer and Grates)	\$99.99
BLZ-PZST	Pizza Stone, 14 3/4"	\$125.99
BLZ-14-SSGP	14" Griddle Plate, Stainless Steel	\$179.99
BLZ-LPH-COVER	Hole Cover, Cart LP	\$39.99
BLZ-NG-HOSE	Hose, ½" x 10' w/ Quick Disconnect Coupler NG/LP	\$74.99
BLZ-32-050	Low Pressure Regulator (used for bulk propane)	\$33.04
BLZ-LP-HOSE/REG	LP Low Pressure Hose and Regulator (used when converting NG grill to LP with 20 LB tank)	\$33.14
BLZ-3-DPFG	Drip Pan Flame Guard, Blaze 3 Burner LBM Grill	\$69.99
BLZ-4-DPFG	Drip Pan Flame Guard, Blaze 4 Burner LBM Grill	\$85.99
BLZ-WG-25	Wind Guard, Blaze 3 Burner Builder LBM Grill	\$329.99
BLZ-WG-32	Wind Guard, Blaze 4 Burner Builder LBM Grill	\$349.99



LTE GAS GRILLS



32" - 4 BURNER
BLZ-4LTE2



40" - 5 BURNER
BLZ-5LTE2



CART

CART FEATURES

- Stainless Steel construction is durable in outdoor conditions
- Adds practical storage for your BBQ accessories
- 2 side shelves provide a convenient work area while grilling
- 4 heavy duty casters allow you to reposition the grill as needed

FEATURES

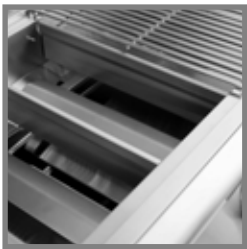
- 304 Stainless Steel Construction
- Double Lined Hood
- 9mm Triangle Shaped Stainless Steel Rod Cooking Grates
- 14,000 BTU Commercial Cast SS Burners
- Heat Zone Separators
- Heavy Duty Stainless Steel Flame Tamers
- Full Size Drip Tray
- Built In Thermometer
- Warming Rack Included
- Push N' Turn Flame Thrower Primary Ignition
- Secondary Manual Flash Tube Ignition
- 10,000 BTU Infrared Rear Burner (32" and 40")
- Available NG or LP (Ships w/ opposite gas conversion kit)
- Lifetime Warranty
- SRLs (Sexy Red Lights) Red Control Knob Illumination (See page 10 for additional color choices)
- Internal Halogen Lighting System



SRLs (Sexy Red Lights)
Sophisticated red LED lights illuminate and accent the control knobs.



Internal Halogen Lighting System
This dual internal lighting system allows for grilling into the night.



Removable Heat Zone Separators
Heat zone separators help seclude a cooking area to maintain varying temperature zones.



Push N' Turn Flame Thrower Primary Ignition w/Backup Flash Tube
Simply push in the control knobs and ignite each burner individually.



Perforated Flame Stabilizing Grids
Designed to minimize flare-ups, the perforated flame stabilizing grids also serve as excellent protection for the burners below.



Heavy Duty 9mm Triangular Cooking Rods
Patented 9mm triangular cooking rods maximize your searing capabilities.



Commercial Grade Cast Stainless Steel Burners
Each burner delivers an impressive 14,000 BTU's of cooking power.

SPECIFICATIONS

Item #	# of Burners	BTU's	Main BTU's	Cooking Surface	Infrared Back Burner	Rotisserie Kit
BLZ-4LTE2 (32")	4	14,000 BTU	56,000	740 sq. in.	Yes, 10,000 BTU	Available Accessory
BLZ-5LTE2 (40")	5	14,000 BTU	70,000	915 sq. in.	Yes, 10,000 BTU	Available Accessory

LTE GAS GRILLS



GRILL HEADS

LP Grills come set up for 20 lb propane tanks. When using bulk propane you must order BLZ-32-050 Low Pressure Regulator.

Item #	Description	Cut-Out Dimensions	Retail
BLZ-4LTE2-NG	32" LTE2 Grill, 4 Burner - NG	8 ½"H x 30 ⅝"W x 21 ¼"D	\$2,299.99
BLZ-4LTE2-LP	32" LTE2 Grill, 4 Burner - LP	8 ½"H x 30 ⅝"W x 21 ¼"D	\$2,299.99
BLZ-5LTE2-NG	40" LTE2 Grill, 5 Burner - NG	8 ½"H x 38 ⅝"W x 21 ¼"D	\$2,749.99
BLZ-5LTE2-LP	40" LTE2 Grill, 5 Burner - LP	8 ½"H x 38 ⅝"W x 21 ¼"D	\$2,749.99

CARTS

(Requires Grill Head) 304 heavy duty stainless steel double door w/locking casters and fixed side shelves.

Item #	Description	Retail
BLZ-4-CART	32" Cart, LTE2	\$649.99
BLZ-5-CART	40" Cart, LTE2	\$679.99

WEATHER COVERS

Cover is made with a water resistant vinyl and has a felt backing that will not scratch the stainless steel exterior of your grill.

Item #	Description	Retail
4BICV	32" Weather Cover, Grill Head	\$64.99
5BICV	40" Weather Cover, Grill Head	\$74.99
4CTCV	32" Weather Cover, Cart and Grill	\$74.99
5CTCV	40" Weather Cover, Cart and Grill	\$84.99

INSULATED JACKETS

(Used when installing the grill into a combustible island structure) Double Lined

Item #	Description	Cut-Out Dimensions	Retail
BLZ-4-IJ	32" Grill Insulated Jacket (Assembly Required)	9 ⅝"H x 33"W x 22 ¼"D	\$599.99
BLZ-5-IJ	40" Grill Insulated Jacket (Assembly Required)	9 ⅝"H x 40 ¾"W x 22 ¼"D	\$679.99

ACCESSORIES

Item #	Description	Retail
BLZ-IR	Infrared Searing Burner, 14,000 BTU's (Sear Burner Replaces a Regular Burner)	\$109.99
BLZ-SMBX	Smoker Box (Slides Between Flame Tamer and Grates)	\$49.99
BLZ-XL-SMBX	Smoker Box Extra Large (Slides Between Flame Tamer and Grates)	\$99.99
BLZ-34-ROTIS-SS	Rotisserie Kit 32" (Includes Motor, Spit Forks, Handle, Mount Collar, and Bracket)	\$189.99
BLZ-5-ROTIS-SS	Rotisserie Kit 40" (Includes Motor, Spit Forks, Handle, Mount Collar, and Bracket)	\$199.99
BLZ-PZST	Pizza Stone, 14 ¾"	\$125.99
BLZ-14-SSGP	14" Griddle Plate, Stainless Steel	\$179.99
BLZ-24-SSGP	24" Griddle Plate, Stainless Steel	\$269.99
BLZ-LPH-COVER	Hole Cover, Cart LP	\$39.99
BLZ-NG-HOSE	Hose, ½" x 10' w/ Quick Disconnect Coupler NG/LP	\$74.99
BLZ-32-050	Low Pressure Regulator (used for bulk propane)	\$33.04
BLZ-LP-HOSE/REG	LP Low Pressure Hose and Regulator (used when converting NG grill to LP with 20 LB tank)	\$33.14
BLZ-4-DPFG	Drip Pan Flame Guard, Blaze 4 Burner LTE2 Grill	\$85.99
BLZ-5-DPFG	Drip Pan Flame Guard, Blaze 5 Burner LTE2 Grill	\$99.99
BLZ-WG-32	Wind Guard, Blaze 4 Burner LTE2 Grill	\$349.99
BLZ-WG-40	Wind Guard, Blaze 5 Burner LTE2 Grill	\$384.99



BLZ-IR



BLZ-SMBX



Rotisserie Kit



BLZ-PZST



BLZ-14-SSGP



BLZ-NG-HOSE



BLZ-LPH-COVER

LTE MARINE GRADE GAS GRILLS



32" - 4 BURNER
BLZ-4LTE2MG



CART

CART FEATURES

- 304 stainless steel construction is durable in outdoor conditions
- Adds practical storage for your BBQ accessories
- 2 side shelves provide a convenient work area while grilling
- 4 heavy duty casters allow you to reposition the grill as needed

GRILL FEATURES

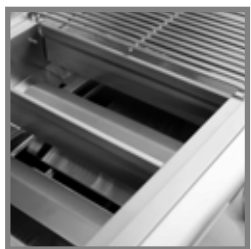
- 316L Marine Grade Stainless Steel Construction
- Double Lined Hood
- 9mm Triangle Shaped Stainless Steel Rod Cooking Grates
- 14,000 BTU Commercial Cast Stainless Steel Burners
- Heat Zone Separators
- Heavy Duty Stainless Steel Flame Tamers
- Includes Full Size Drip Tray with Flame Guard
- Built In Thermometer
- Warming Rack Included
- Push N' Turn Flame Thrower Primary Ignition
- Secondary Manual Flash Tube Ignition
- 10,000 BTU Infrared Rear Burner
- Available NG or LP (Ships w/ opposite gas conversion kit)
- Lifetime Warranty
- SRLs (Sexy Red Lights) Red Control Knob Illumination (See page 10 for additional color choices)
- Internal Halogen Lighting System



SRLs (Sexy Red Lights)
Sophisticated red LED lights illuminate and accent the control knobs.



Internal Halogen Lighting System
This dual internal lighting system allows for grilling into the night.



Removable Heat Zone Separators
Heat zone separators help seclude a cooking area to maintain varying temperature zones.



Push N' Turn Flame Thrower Primary Ignition w/Backup Flash Tube
Simply push in the control knobs and ignite each burner individually.



Perforated Flame Stabilizing Grids
Designed to minimize flare-ups, the perforated flame stabilizing grids also serve as excellent protection for the burners below.



Cooking Grid
The 9mm thick triangular cooking grates absorb heat, producing deep sear marks.



Commercial Grade Cast Stainless Steel Burners
Each burner delivers an impressive 14,000 BTU's of cooking power.

SPECIFICATIONS

Item #	# of Burners	BTU's	Main BTU's	Cooking Surface	Infrared Back Burner	Rotisserie Kit
BLZ-4LTE2MG (32")	4	14,000 BTU	56,000	740 sq. in.	Yes, 10,000 BTU	Available Accessory

LTE MARINE GRADE GAS GRILLS



GRILL HEADS

LP Grills come set up for 20 lb propane tanks. When using bulk propane you must order BLZ-32-050 Low Pressure Regulator.

Item #	Description	Cut-Out Dimensions	Retail
BLZ-4LTE2MG-NG	32" Marine Grade Grill, 4 Burner - NG	8 ½"H x 30 ⅝"W x 21 ¼"D	\$3,199.99
BLZ-4LTE2MG-LP	32" Marine Grade Grill, 4 Burner - LP	8 ½"H x 30 ⅝"W x 21 ¼"D	\$3,199.99

CART

(Requires Grill Head) 304 heavy duty stainless steel double door w/locking casters and fixed side shelves.

Item #	Description	Retail
BLZ-4-CART	32" Cart, LTE2	\$649.99

WEATHER COVERS

Cover is made with a water resistant vinyl and has a felt backing that will not scratch the stainless steel exterior of your grill.

Item #	Description	Retail
4BICV	32" Weather Cover, Grill Head	\$64.99
4CTCV	32" Weather Cover, Cart and Grill	\$74.99

INSULATED JACKET

(Used when installing the grill into a combustible island structure) Double Lined

Item #	Description	Cut-Out Dimensions	Retail
BLZ-4-IJ	32" Grill Insulated Jacket (Assembly Required)	9 ⅝"H x 33"W x 22 ¼"D	\$599.99

ACCESSORIES

Item #	Description	Retail
BLZ-IR	Infrared Searing Burner, 14,000 BTU's (Sear Burner Replaces a Regular Burner)	\$109.99
BLZ-SMBX	Smoker Box (Slides Between Flame Tamer and Grates)	\$49.99
BLZ-XL-SMBX	Smoker Box Extra Large (Slides Between Flame Tamer and Grates)	\$99.99
BLZ-34-ROTIS-SS	Rotisserie Kit 32" (Includes Motor, Spit Forks, Handle, Mount Collar, and Bracket)	\$189.99
BLZ-PZST	Pizza Stone, 14 ¾"	\$125.99
BLZ-14-SSGP	14" Griddle Plate, Stainless Steel	\$179.99
BLZ-24-SSGP	24" Griddle Plate, Stainless Steel	\$269.99
BLZ-LPH-COVER	Hole Cover, Cart LP	\$39.99
BLZ-NG-HOSE	Hose, ½" x 10' w/ Quick Disconnect Coupler NG/LP	\$74.99
BLZ-32-050	Low Pressure Regulator (used for bulk propane)	\$33.04
BLZ-LP-HOSE/REG	LP Low Pressure Hose and Regulator (used when converting NG grill to LP with 20 LB tank)	\$33.14
BLZ-WG-32	Wind Guard for Blaze 4 Burner LTE2 Grill	\$349.99



PROFESSIONAL GAS GRILLS



34" - 3 BURNER
BLZ-3PRO



44" - 4 BURNER
BLZ-4PRO

FEATURES

- 304 Stainless Steel Construction
- Double Lined Hood
- Heavy 12mm Stainless Steel Rod Cooking Grates
- 18,000 BTU Commercial Cast Stainless Steel H Burners
- Heat Zone Separators
- Heavy Duty Stainless Steel Flame Tamers
- Full Size Drip Tray
- Built In Thermometer
- Warming Rack Included
- Push N' Turn Flame Thrower Primary Ignition
- Secondary Manual Flash Tube Ignition
- 10,000 BTU Infrared Rear Burner
- Rotisserie Kit with Waterproof Motor Included
- Lifetime Warranty
- SRLs (Sexy Red Lights) Red Control Knob Illumination (See page 10 for additional color choices)
- Internal Halogen Lighting System
- Available NG or LP (Ships w/ opposite gas conversion kit)



SRLs (Sexy Red Lights)
Sophisticated red LED lights illuminate and accent the control knobs.



Internal Halogen Lighting System
This dual internal lighting system allows for grilling into the night.

CART FEATURES

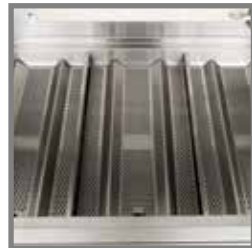
- 2 Folding Side Shelves
- 4 Heavy Duty Casters
- Includes two (2) Drawers and a Door



CART



Cooking Grid
The heavy, 12mm thick cooking rods absorb heat, producing deep sear marks.



Perforated Flame Stabilizing Grids
Heavy-duty 12 gauge flame stabilizing grids cover the entire grill to maximize flavor and minimize flare-ups.



Flash Tube Backup Ignition System
Individual flash tube secondary ignition system ensures grill startup for every occasion.



Rotisserie Rod Storage
Convenient rotisserie rod storage behind the grill head provides easy access.



Cast Stainless Steel Burners
Professional-quality, cast stainless steel H-burners deliver impressive cooking power.

SPECIFICATIONS

Item #	# of Burners	BTU's	Main BTU's	Cooking Surface	Infrared Back Burner	Rotisserie Kit
BLZ-3PRO (34")	3	18,000 BTU	54,000	816 sq. in.	Yes, 10,000 BTU	Included
BLZ-4PRO (44")	4	18,000 BTU	72,000	1050 sq. in.	Yes, 10,000 BTU	Included

PROFESSIONAL GAS GRILLS



GRILL HEADS

LP Grills come set up for 20 lb propane tanks. When using bulk propane you must order BLZ-32-050 Low Pressure Regulator.

Item #	Description	Cut-Out Dimensions	Retail
BLZ-3PRO-NG	34" Professional Grill, 3 Burner - NG	10 ½"H x 32 ¼"W x 23 ⅝"D	\$4,299.99
BLZ-3PRO-LP	34" Professional Grill, 3 Burner - LP	10 ½"H x 32 ¼"W x 23 ⅝"D	\$4,299.99
BLZ-4PRO-NG	44" Professional Grill, 4 Burner - NG	10 ½"H x 42 ½"W x 23 ⅝"D	\$5,299.99
BLZ-4PRO-LP	44" Professional Grill, 4 Burner - LP	10 ½"H x 42 ½"W x 23 ⅝"D	\$5,299.99

CARTS

(Requires Grill Head) 304 heavy duty stainless steel cart w/locking casters, and folding side shelves.

Item #	Description	Retail
BLZ-3PRO-CART	34" Cart, Professional, Door/2 Drawer Combo	\$1,299.99
BLZ-4PRO-CART	44" Cart, Professional, Door/2 Drawer Combo	\$1,579.99

WEATHER COVERS

Cover is made with a water resistant vinyl and has a felt backing that will not scratch the stainless steel exterior of your grill.

Item #	Description	Retail
3PROBICV	34" Weather Cover, Grill Head	\$74.99
4PROBICV	44" Weather Cover, Grill Head	\$89.99
3PROCTCV	34" Weather Cover, Cart and Grill	\$99.99
4PROCTCV	44" Weather Cover, Cart and Grill	\$109.99

INSULATED JACKETS

(Used when installing the grill into a combustible island structure) Double Lined

Item #	Description	Cut-Out Dimensions	Retail
BLZ-3PRO-IJ	34" Grill Insulated Jacket (Assembly Required)	11 ½"H x 34 ¾"W x 24 ⅞"D	\$789.99
BLZ-4PRO-IJ	44" Grill Insulated Jacket (Assembly Required)	10 ⅞"H x 45"W x 24 ⅞"D	\$919.99

ACCESSORIES

Item #	Description	Retail
BLZ-PRO-IR	Infrared Searing Burner, 18,000 BTU's (Sear Burner Replaces a Regular Burner)	\$269.99
BLZ-PRO-SMBX	Smoker Box (Slides Between Flame Tamer and Grates)	\$54.99
BLZ-XL-PROSMBX	Smoker Box Extra Large (Slides Between Flame Tamer and Grates)	\$109.99
BLZ-PRO-PZST-2	Pizza Stone, 15"	\$175.99
BLZ-14-SSGP	14" Griddle Plate, Stainless Steel	\$179.99
BLZ-24-SSGP	24" Griddle Plate, Stainless Steel	\$269.99
BLZ-LPH-COVER	Hole Cover, Cart LP	\$39.99
BLZ-NG-HOSE	Hose, ½" x 10' w/ Quick Disconnect Coupler NG/LP	\$74.99
BLZ-32-050	Low Pressure Regulator (used for bulk propane)	\$33.04
BLZ-LP-HOSE/REG	LP Low Pressure Hose and Regulator (used when converting NG grill to LP with 20 LB tank)	\$33.14
BLZ-3PRO-DPFG	Drip Pan Flame Guard, Blaze 3 Burner PRO Grill	\$109.99
BLZ-4PRO-DPFG	Drip Pan Flame Guard, Blaze 4 Burner PRO Grill	\$129.99
BLZ-PROWG-34	Wind Guard, Blaze 3 Burner PRO Grill	\$394.99
BLZ-PROWG-44	Wind Guard, Blaze 4 Burner PRO Grill	\$419.99



BLZ-PRO-IR



BLZ-PRO-SMBX



BLZ-PRO-PZST



BLZ-14-SSGP



BLZ-NG-HOSE



BLZ-LPH-COVER

CUSTOMIZE YOUR GRILL



LED LIGHT KITS

Customize your Blaze products for the nighttime look you desire. Upgrade your appliance with blue, white or amber light color options. These lights are interchangeable on the LTE and Professional Series products only.



Blue LED Light Kit



White LED Light Kit



Amber LED Light Kit

Item #	Description	For Use With	Retail
BLZ-2LED-BLU	Blue LED Light Kit	Griddle, Power Burner, & Side Burner (SB2)	\$39.99
BLZ-3PROLED-BLU	Blue LED Light Kit	3 Pro Grill	\$69.99
BLZ-4B-LED-BLU	Blue LED Light Kit	4 Pro & 4LTE Grill	\$75.99
BLZ-5LTELED-BLU	Blue LED Light Kit	5LTE Grill	\$85.99
BLZ-2LED-WHT	White LED Light Kit	Griddle, Power Burner, & Side Burner (SB2)	\$39.99
BLZ-3PROLED-WHT	White LED Light Kit	3 Pro Grill	\$69.99
BLZ-4B-LED-WHT	White LED Light Kit	4 Pro & 4LTE Grill	\$75.99
BLZ-5LTELED-WHT	White LED Light Kit	5LTE Grill	\$85.99
BLZ-2LED-AMB	Amber LED Light Kit	Griddle, Power Burner, & Side Burner (SB2)	\$39.99
BLZ-3PROLED-AMB	Amber LED Light Kit	3 Pro Grill	\$69.99
BLZ-4B-LED-AMB	Amber LED Light Kit	4 Pro & 4LTE Grill	\$75.99
BLZ-5LTELED-AMB	Amber LED Light Kit	5LTE Grill	\$85.99

HOOD & CONTROL PANEL SKINS

Personalize your grill with these 304 Stainless Steel anodized colored metal skins. They are clipped on to your existing hood and control panel.



Rose Gold/Copper Skin



Black Skin



Stainless Steel Skin

Item #	Description	For Use With	Retail
BLZ-4BSK-RG	Rose Gold/Copper	4 LTE Grill	\$239.99
BLZ-5BSK-RG	Rose Gold/Copper	5 LTE Grill	\$289.99
BLZ-3PROSK-RG	Rose Gold/Copper	3 Pro Grill	\$319.99
BLZ-4PROSK-RG	Rose Gold/Copper	4 Pro Grill	\$349.99
BLZ-4BSK-BLK	Black	4 LTE Grill	\$239.99
BLZ-5BSK-BLK	Black	5 LTE Grill	\$289.99
BLZ-3PROSK-BLK	Black	3 Pro Grill	\$319.99
BLZ-4PROSK-BLK	Black	4 Pro Grill	\$349.99
BLZ-4BSK-SS	Stainless Steel	4 LTE Grill	\$199.99
BLZ-5BSK-SS	Stainless Steel	5 LTE Grill	\$239.99
BLZ-3PROSK-SS	Stainless Steel	3 Pro Grill	\$275.99
BLZ-4PROSK-SS	Stainless Steel	4 Pro Grill	\$299.99

GAS GRIDDLE



GRIDDLE CART



GRIDDLE

Expand your outdoor cooking with the gas griddle. The versatility of the Blaze griddle allows you to cook bacon and eggs, juicy hamburgers or sizzling fajitas with rice and veggies for the whole family. This ETL certified gas griddle is constructed entirely with heavy duty, 304 grade stainless steel and includes a stainless steel lid to cover the griddle plate when not in use.

GRIDDLE

LP Griddle come set up for 20 lb propane tank. When using bulk propane you must order BLZ-32-050 Low Pressure Regulator.

Item #	Description	Retail
BLZ-GRID-LTE-NG	30" Griddle, NG	\$2,299.99
BLZ-GRID-LTE-LP	30" Griddle, LP	\$2,299.99

CART *(Cart Requires Grill Head)*

Item #	Description	Retail
BLZ-GRIDDLE-CT	Cart, Griddle	\$825.99

ACCESSORIES *(Used when installing the grill into a combustible island structure) Double Lined*

Item #	Description	Cut-Out Dimensions	Retail
BLZ-GRIDDLE-IJ	30" Insulated Jacket, Griddle (Assembly Required)	12 3/4"H x 30 5/8"W x 25"D	\$769.99
GRDBICV	Vinyl Elastic Cover, Built-in Griddle		\$44.99

FEATURES

- (2) 18,000 BTU Stainless Steel U shaped Burners
- 36,000 BTU's of cooking power
- Reliable Flame Thrower Ignition
- Full width grease trough directs grease down to the drip tray for easy cleanup
- Heavy duty 304 Stainless Steel Construction
- Stainless Steel Lid included to protect the unit when not in use
- SRLs (Sexy Red Lights) Red Control Knob Illumination (See page 10 for additional color choices)
- Best In Class Lifetime Warranty



Griddle with Drip Tray open



Griddle with Lid (Included)

CART & SHELF KIT FEATURES

- Blaze Grills offers a best in class lifetime warranty
- Adds practical storage for your BBQ accessories
- 2 side shelves provide a convenient work area while grilling
- 4 heavy duty casters allow you to reposition the grill as needed
- Heavy duty 304 Stainless Steel construction

CHARCOAL GRILLS

Traditional & Kamado



32" Traditional Charcoal Grill



FEATURES

- 4 Individual 9mm Cooking Grids
- Easy Hook and Hang System
- Adjustable Charcoal Tray in order to provide various temperatures easily
- Pull Out Ash Pan (Easy Clean-up)
- Double Lined Hood
- Adjustable Rear Vent to Control Airflow
- 550 square inches of cooking space
- Made in the USA

TRADITIONAL CHARCOAL GRILL - STAINLESS STEEL

Item #	Description	Cut-Out Dimensions	Retail
BLZ-4-CHAR	Charcoal Grill 32" Stainless Steel	8 1/2"H x 30 5/8"W x 21 1/4"D	\$1,619.99

CART *(Requires Grill Head) 304 heavy duty stainless steel double door w/locking casters, and fixed side shelves*

Item #	Description	Retail
BLZ-4-CART	32" Cart, Charcoal Grill	\$649.99

ACCESSORIES

Item #	Description	Retail
4BICV	32" Weather Cover, Head Only	\$64.99
4CTCV	32" Weather Cover, Cart and Grill	\$74.99
BLZ-WG-32	Wind Guard	\$349.99
BLZ-LPH-COVER	Hole Cover, Cart LP	\$39.99
BLZ-PZST	Pizza Stone, 14 3/4"	\$125.99

CART FEATURES

- Stainless Steel Construction
- 2 Side Shelves
- 4 Heavy Duty Casters
- Double Door Storage Compartment

KAMADO CHARCOAL GRILL - ALUMINUM

Item #	Description	Retail
BLZ-20-KAMADO	Kamado, 20" Aluminum Charcoal	\$2,237.49

CART *(Requires Grill Head)*

Item #	Description	Retail
BLZ-KMDO2-CART	Cart, Stainless Steel 20" Kamado	\$249.99



Kamado Grill



Kamado Cart

COVERS

Item #	Description	Retail
20KMBICV	Cover, Head Only	\$89.99
20KMCTCV	Cover, for use with 20" Kamado Grill and Cart with Side Shelves	\$99.99

ACCESSORIES

Item #	Description	Retail
BLZ-KMDO-SDSH4	Side Shelf Kit Stainless Steel w/ Hooks (Cannot be used with Round Front Shelf or Side Handles)	\$199.99
BLZ-KMDO-HAND	Side Handles (2), Stainless Steel (Cannot be used with Side Shelf or Round Front Shelf)	\$99.99
BLZ-KMDO-2ROTIS	Rotisserie, Waterproof	\$184.99
BLZ-KMDO-CBDRP	Easy Light Indirect Cooking System with Moisture Enhancing Pan	\$139.99
BLZ-KMDO-SLV	Sleeve/Drawer Unit (Cut out dimensions: 33 3/8"H x 31 3/4"W x 29 3/8"D)	\$1,569.99
BLZ-KMDO-ISSP	Cooking Plate, 15" - 4 in 1	\$139.99

ELECTRIC GRILL



Electric Grill
BLZ-ELEC-21



Electric Grill w/ Pedestal
BLZ-ELEC-21 & BLZ-ELEC21-BASE



Electric Grill w/ Pedestal
showing folded sides

ELECTRIC GRILL

Electric Grills have emerged as the go to outdoor barbeque for many grilling enthusiasts. Think convenience! Easy to light, compact, safer than gas, even cooking, easy clean up. Perfect for that small yard or balcony.

Item #	Description	Retail
BLZ-ELEC-21	Electric Grill	\$1,489.99

ACCESSORIES

Item #	Description	Retail
BLZ-ELEC21-BASE	Pedestal and Base with folding Side Shelves	\$529.99
BLZ-ELEC21-HGKT	Built-in Kit (Used when installing grill head into an island structure)	\$69.99
21ELECTCV	Counter Head Cover	\$54.99
21PEDELCV	Grill Head and Pedestal Cover	\$64.99

FEATURES

- 304 Stainless Steel Construction
- 274 sq in of Cooking Surface
- Full Size Heating Element Distributes Heat Evenly
- 1500 Watt Electric Element
- Maximum Grill Surface Temperature of 749°F
- Water Resistant
- Triangular 9mm Stainless Steel Searing Rods
- 16 GA Stainless Steel Flame Tamers
- Removable Drip Pan
- Available in a Table-Top, Pedestal, and Built-In model
- ETL Certified
- 3 Year Multi-User Warranty
- Lifetime Warranty



304 Stainless Steel Body
Heavy duty stainless steel body allow your grill to last a lifetime.



Cooking Grid
The 9mm thick triangular cooking grates absorb heat, producing deep sear marks.



Drip Pan
Pull-out drip pan for easy clean-up



Adjustable Legs
The electric grill comes standard with adjustable leveling legs.



Power Cord
Heavy duty 7 ½' power cord with built in GFCI.

VENT HOOD



VENT HOOD



Vent Hood showing Lights



Vent Control



Light Control

Ventilating an outdoor cooking space can be challenging due to the increased amount of smoke produced by outdoor cooking equipment. The Outdoor Vent Hood pairs a deeper hood canopy with a powerful twin motor system to effectively clean the air from the grilling area. The industry leading, 36" depth of the hood protrudes further over the cooking space capturing more smoke when the grill lid is opened. This hood has 60% greater suction compared to other outside hoods on the market today.

VENT HOOD

Item #	Description	Retail
BLZ-36-VHOOD	36" Vent Hood, Wall Mounted (18"H x 36"W x 36"D)	\$1,799.99
BLZ-42-VHOOD	42" Vent Hood, Wall Mounted (18"H x 42"W x 36"D)	\$2,299.99

FEATURES

- 36" canopy depth which maximizes the capture range of the vent hood
- Two independent and individually controlled 1,000 CFM 4- speed motors
- 2,000 total CFM's
- Higher allowable install height creates a more comfortable work area
- 4 adjustable halogen lights illuminate your cooking surface
- Innovative grease free retractable controls with lighted facing
- Reversible motors have back venting and overhead venting options
- Mounting height is 36" minimum to 40" maximum
- (2) 8" round vent outlets

ELECTRICAL REQUIREMENTS

- Comes with a 4 foot cord
- Plugs into a regular 110 V Outlet
- 15 AMP breaker required



SIDE BURNERS



SINGLE SIDE BURNER
BLZ-SB1



DOUBLE SIDE BURNER
BLZ-SB2LTE



LTE POWER BURNER
BLZ-PBLTE



PRO POWER BURNER
BLZ-PROPB

Side burners and power burners are all built with the highest quality 304 stainless steel. Side burners are great for simmering sauces, also perfect for large skillets and pans. Other uses include boiling or frying.

BURNERS

Item #	Description	Cut-Out-Dimensions	Retail
BLZ-SB1-NG	Single Side Burner Drop-In, NG	2 13/16" H x 11 1/4" W x 18" D	\$399.99
BLZ-SB1-LP	Single Side Burner Drop-In, LP		\$399.99
BLZ-SB2LTE-NG	Double LTE Side Burner, with Lights, NG	8 1/2" H x 10 3/4" W x 20 3/4" D	\$799.99
BLZ-SB2LTE-LP	Double LTE Side Burner, with Lights, LP		\$799.99
BLZ-PBLTE-NG	Power Burner LTE, with Lights, NG	8" H x 14" W x 19 1/2" D	\$1,299.99
BLZ-PBLTE-LP	Power Burner LTE, with Lights, LP		\$1,299.99
BLZ-PROPB-NG	Professional Power Burner, with Lights, NG	9 1/4" H x 14" W x 19 1/2" D	\$1,399.99
BLZ-PROPB-LP	Professional Power Burner, with Lights, LP		\$1,399.99

COVERS

Item #	Description	Retail
2SBBICV	Vinyl Weather Cover, SB2	\$34.99
PBBICV	Vinyl Weather Cover, Power Burner	\$34.99

INSULATED JACKETS *(Used when installing the side burner into a combustible island structure) Double Lined*

Item #	Description	Cut-Out Dimensions	Retail
BLZ-SB2-IJ	Insulated Jacket, Double Side Burner (Assembly Required)	9 5/8" H x 13" W x 22 1/4" D	\$385.99
BLZ-PB-IJ	Insulated Jacket, LTE Power Burner (Assembly Required)	9" H x 16 1/2" W x 20 5/8" D	\$449.99
BLZ-PROPB-IJ	Insulated Jacket, Professional Power Burner (Assembly Required)	10 1/4" H x 16 1/2" W x 20 5/8" D	\$459.99

SPECIFICATIONS

Description	BLZ-SB1	BLZ-SB2LTE	BLZ-PBLTE	BLZ-PROPB
Total BTU's	12,000	24,000	60,000	60,000
Burner Type	Brass	Brass	Cast Stainless	Cast Stainless
SRL (Sexy Red Lights)	Not Available	Yes Included Additional Colors Available. See pg 80	Yes Included Additional Colors Available. See pg 80	Yes Included Additional Colors Available. See pg 80
Cut-Out Dimensions	2 13/16" H x 11 1/4" W x 18" D	8 1/2" H x 10 3/4" W x 20 3/4" D	8" H x 14" W x 19 1/2" D	9 1/4" H x 14" W x 19 1/2" D
Side Burner Cover	Stainless Steel	Stainless Steel	Stainless Steel	Stainless Steel

DOOR COMPONENTS



FEATURES

- Commercial grade 304 Stainless Steel construction is made for withstanding outdoor elements
- Adds convenient storage in any outdoor kitchen
- Double wall construction
- Rounded bevel design adds structural integrity to the door
- Stainless Steel Mounting Brackets
- Accented with heavy duty curved handles



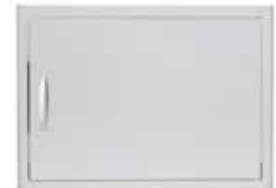
BLZ-DDC-R



BLZ-DDC-39-R



BLZ-SV-2417-R



BLZ-SH-2417-R



BLZ-AD32-R



BLZ-DRY-STG



Dry Storage Open



Dry Storage Gasket

DOOR COMPONENTS

Item #	Description	Cut-Out Dimensions	Retail
BLZ-DDC-R	32" Door / 2 Drawer Combo	19 ½"H x 30 ¼"W x 20 ¾"D	\$749.99
BLZ-DDC-39-R	39" Door / 3 Drawer Combo	19 ½"H x 37 ⅝"W x 20 ⅝"D	\$799.99
BLZ-SV-2417-R	24" x 17" Vertical Door	24 ¼"H x 17"W	\$349.99
BLZ-SH-2417-R	17" x 24" Horizontal Door	17"H x 24 ¼"W	\$349.99
BLZ-SV-1420-R	20" x 14" Vertical Door	20 ¼"H x 14 ¼"W	\$299.99
BLZ-AD25-R	25" Double Door	18 ¼"H x 21 ⅜"W	\$369.99
BLZ-AD32-R	32" Double Door	18 ¼"H x 28 ¾"W	\$399.99
BLZ-AD40-R	40" Double Door	18 ¼"H x 35 ¾"W	\$449.99
BLZ-DRY-STG	32" Dry Storage Double Door (fully enclosed gasket sealed doors)	19 ½"H x 30 ⅝"W x 20 ¾"D	\$1,399.99

DRAWER COMPONENTS



FEATURES

- Commercial grade 304 Stainless Steel construction is made for withstanding outdoor elements
- Large drawers add valuable storage space in your outdoor kitchen
- Easy close assist mechanism closes drawers with a soft touch
- Drawers glide easily on heavy duty tracks
- Double wall construction
- Rounded bevel design adds structural integrity to the door
- Stainless Steel Mounting Brackets
- Accented with heavy duty curved handles



BLZ-DRW2-R



BLZ-DRW3-R



BLZ-30W-3DRW



BLZ-TRLP-DRW



BLZ-TRNW-DRW



BLZ-TRNW-DRW
Open



BLZ-TREC-DRW



BLZ-PTH-R



BLZ-ISLAND-VENT



BLZ-ICEB-WH



BLZ-ICEB-WH
Open

DRAWER COMPONENTS

Item #	Description	Cut-Out Dimensions	Retail
BLZ-DRW2-R	16" Double Drawer	19 5/8"H x 15 3/8"W x 21"D	\$649.99
BLZ-DRW3-R	16" Triple Drawer	27 5/8"H x 15 3/8"W x 21"D	\$799.99
BLZ-30W-3DRW	30" Triple Drawer	27 5/8"H x 27 5/8"W x 21"D	\$1,299.99
BLZ-TRLP-DRW	LP Drawer / Single Trash Drawer (Includes 42 qt. trash bin)	24 1/4"H x 18 1/8"W x 15 3/4"D	\$499.99
BLZ-TRNW-DRW	Trash Bin Narrow Roll Out (Includes 42 qt. trash bin)	24 3/4"H x 12"W x 18 3/4"D	\$499.99
BLZ-TREC-DRW	Trash Drawer Double (Includes (2) 42 qt. trash bins)	24 3/8"H x 18 1/16"W x 23 1/8"D	\$799.99

ISLAND ACCESSORIES

Item #	Description	Cut-Out Dimensions	Retail
BLZ-PTH-R	Paper Towel Holder	8 3/4"H x 14 1/8"W x 8 7/8"D	\$299.99
BLZ-ICEB-WH	Ice Bin / Wine Chiller	20 1/4"H x 20 1/4"W x 20 3/4"D	\$899.99
BLZ-ISLAND-VENT	Vent, Stainless Steel 14" x 6"	5 1/2"H x 13 1/2"W	\$39.99

REFRIGERATION



BLZ-SSRF126

BLZ-SSRF126 \$539.99

4.4 cu. ft. (Right Hinge Standard)
Must have rear ventilation behind the unit.

BLZ-SSFP-126	Door Sleeve (Right)	\$189.99
BLZ-SSFP-126LH	Door Sleeve (Left)	\$189.99
BLZ-TK-126	Trim Kit	TBA

Cut-Out Dimensions:

Refrigerator 35 3/4" H x 22 5/8" W x 23" D
 Trim Kit Coming Soon

Specification	BLZ-SSRF126
Storage Capacity	4.4 cu. ft.
Outdoor Rated	No
Lock & Key	Yes
Reversible Door	Yes
Inside Shelves	3 - Wire
Interior Light	Yes
Digital Thermostat	No



BLZ-SSRF-15

BLZ-SSRF-15 \$1,099.99

3.2 cu. ft. Outdoor Rated (Right Hinge Standard)

BLZ-TK-15	Trim Kit	\$79.99
------------------	-----------------	----------------

Cut-Out Dimensions:

Refrigerator 34 7/8" H x 15 3/8" W x 25 3/4" D
 Trim Kit 34 1/2" H x 15 1/4" W

Description	BLZ-SSRF-15
Storage Capacity	3.2 cu. ft.
Outdoor Rated	Yes
Lock & Key	Yes
Reversible Door	Yes
Inside Shelves	3 Adjustable
Interior Light	Yes
Digital Thermostat	Yes



BLZ-SSRF-5.5

BLZ-SSRF-5.5 \$1,829.99

5.5 cu. ft. Outdoor Rated (Right Hinge Standard)

BLZ-TK-5.5	Trim Kit	\$79.99
-------------------	-----------------	----------------

Cut-Out Dimensions:

Refrigerator 34 7/8" H x 24" W x 25 3/4" D
 Trim Kit 34 1/2" H x 24 1/2" W

Description	BLZ-SSRF-5.5
Storage Capacity	5.5 cu. ft.
Outdoor Rated	Yes
Lock & Key	Yes
Reversible Door	Yes
Inside Shelves	3 Glass Adj.
Interior Light	Yes
Digital Thermostat	Yes



BLZ-GDBEV-5.5

BLZ-GDBEV-5.5 \$1,949.99

5.5 cu. ft. Outdoor Rated with Glass Door
 (Right Hinge Standard)

BLZ-TK-5.5	Trim Kit	\$79.99
-------------------	-----------------	----------------

Cut-Out Dimensions:

Refrigerator 34 7/8" H x 24" W x 25 3/4" D
 Trim Kit 34 1/2" H x 24 1/2" W

Description	BLZ-GDBEV-5.5
Storage Capacity	5.5 cu. ft.
Outdoor Rated	Yes
Lock & Key	Yes
Reversible Door	Yes
Inside Shelves	3 Glass, 3 Wood
Interior Light	Yes
Digital Thermostat	Yes

REFRIGERATION



BLZ-SSRF-DBDR51

BLZ-SSRF-DBDR51 **\$2,199.99**

5.1 cu. ft. Double Drawer Refrigerator.

BLZ-TK-DR5.1	Trim Kit	\$89.99
---------------------	-----------------	----------------

Cut-Out Dimensions:

Refrigerator	34 ¼" H x 24 ½" W x 26" D
Trim Kit	34 ¼" H x 24 ½" W

Description	BLZ-SSRF-DBDR51
Storage Capacity	5.1 cu. ft.
Outdoor Rated	Yes
Lock & Key	No
Reversible Door	No
Inside Shelves	No
Interior Light	Yes
Digital Thermostat	Yes

ICE MAKER & BEVERAGE CENTER



ICE MAKER **\$2,499.99**

BLZ-ICEMKR-50GR

*(Door is reversible for right or left hinge. Shown as a left hinge.)
Ice Maker has 50 lb production and 25 lb storage.*

BLZ-TK-ICEMKR	Trim Kit	\$79.99
----------------------	-----------------	----------------

Cut-Out Dimensions:

Ice Maker	34" H x 16 ⅝" W x 27 ⅝" D
Trim Kit	34" H x 16 ⅝" W



BEVERAGE CENTER **\$1,649.99**

BLZ-30CKT-SNK

Cut-Out Dimensions: 9" H x 28 ⅜" W x 23 ⅝" D



SUMMIT APPLIANCES

Outdoor Kitchen Island Components

Summit is home to the industry's most extensive collection of outdoor refrigerators, freezers, and beer dispensers. Their weatherproof selection brings safe and stylish food service to any home or commercial setting.



Fridge, 5.0 cu. ft.
191812



Freezer, 4.6 cu. ft.
191821



Wine/Beverage Center
191813



Kegerator Single
191814



Kegerator Twin
191815

APPLIANCES

Item #	Description	Dimensions	Retail
191812	Fridge 5.0 cu ft, Glass Front SS Ext/SS Int	34" H x 23 3/8" W x 23 1/2" D	\$2,326
191821	Freezer 4.6 cu ft, Stainless Steel	34" H x 23 3/8" W x 23 3/8" D	\$2,697
191813	Wine/Beverage Center SS Ext/Black Int (6 wire shelves 3 glass shelves)	34 1/2" H x 23 7/8" W x 23 7/8" D	\$2,108
191814	Kegerator Single Dispensory SS (fits 1 full or 1/4 keg, fits(2) 1/6 Kegs)	33 1/2" H x 24" W x 25 3/8" D	\$2,850
191815	Kegerator Twin Dispensory SS (fits (1) 1/4 Keg or (2) 1/6 Kegs)	34 3/8" H x 23 3/8" W x 24 1/8" D	\$2,748

Outdoor Refrigerators & Freezers: Create a complete kitchen set with our fully featured outdoor refrigerators and matching frost-free freezers.

Features: stainless steel construction, digital thermostats, and LED lighting.

DOOR & DRAWER COMPONENTS



**While
Supplies
Last**

FEATURES

- #304 Stainless Steel
- Double Wall Construction
- SS Mounting Brackets
- Beveled Outer Edge
- Heavy Duty Drawer Glides
- Interior Weatherproof Hinges



308010



308012



308013



308019



308016



308022

DOOR COMPONENTS

Item #	Description	Cut-Out Dimensions (WxHxD)	Retail
308008	20" x 14" Stainless Steel Single Access Door	20 ½" x 14 ½"	\$207
308010	17" x 24" Stainless Steel Single Access Door	24 ½" x 17 ½"	\$254
308012	31" Door / 2 Drawer Combo	26 ½" x 20 ½" x 17 ½"	\$645
308013	39" Door / 3 Drawer Combo	34 ½" x 20 ½" x 17 ¼"	\$706

DRAWERS

Item #	Description	Cut-Out Dimensions (WxHxD)	Retail
308019	24" Single Drawer	22 ¾" x 4 ½" x 23 ½"	\$276

OTHER COMPONENTS

Item #	Description	Cut-Out Dimensions (WxHxD)	Retail
308016	Outdoor Bar	17 ½" x 10" x 24 ½"	\$627
308022	Bottle Opener and Catcher	N/A	\$27

BARRY'S RESTORE IT ALL PRODUCTS

Sprays & Specialty Items



Scratch-B-Gone Homeowner Kit
1001



Scratch-B-Gone Small Area Touch-Up Kit
1002



BBQ Grill Rescue Kit
1005



Collar Rescue Kit
1006



Stainless Steel Rescue Kit
1024



All Surface Rescue Spray
1011



Granite and Stone Rescue Spray
1010



Stainless Steel Rescue Spray
1009



Grill and Grate Degreaser
1013



Fire Door Glass Rescue
1020

RESTORE IT ALL PRODUCTS

Item #	Description	Case Qty	Retail Price per each
1001	Scratch-B-Gone Homeowner Kit	8	\$52.95
1002	Scratch-B-Gone Small Area Touch-Up Kit	8	\$25.95
1005	BBQ Grill Rescue Kit	8	\$58.95
1006	Collar Rescue Kit	8	\$19.95
1024	Stainless Rust Medic Kit with Nano Technology	8	\$229.95
1011	All Surface Rescue Spray (16 oz)	12	\$10.95
1010*	Granite and Stone Rescue Spray (16 oz)	12	\$10.95
1009	Stainless Steel Rescue Spray (16 oz)	12	\$12.95
1013	Grill and Grate Degreaser (16 oz)	12	\$17.95
1020	Fire Door Glass Rescue (6 oz)	12	\$14.95

*Special Order