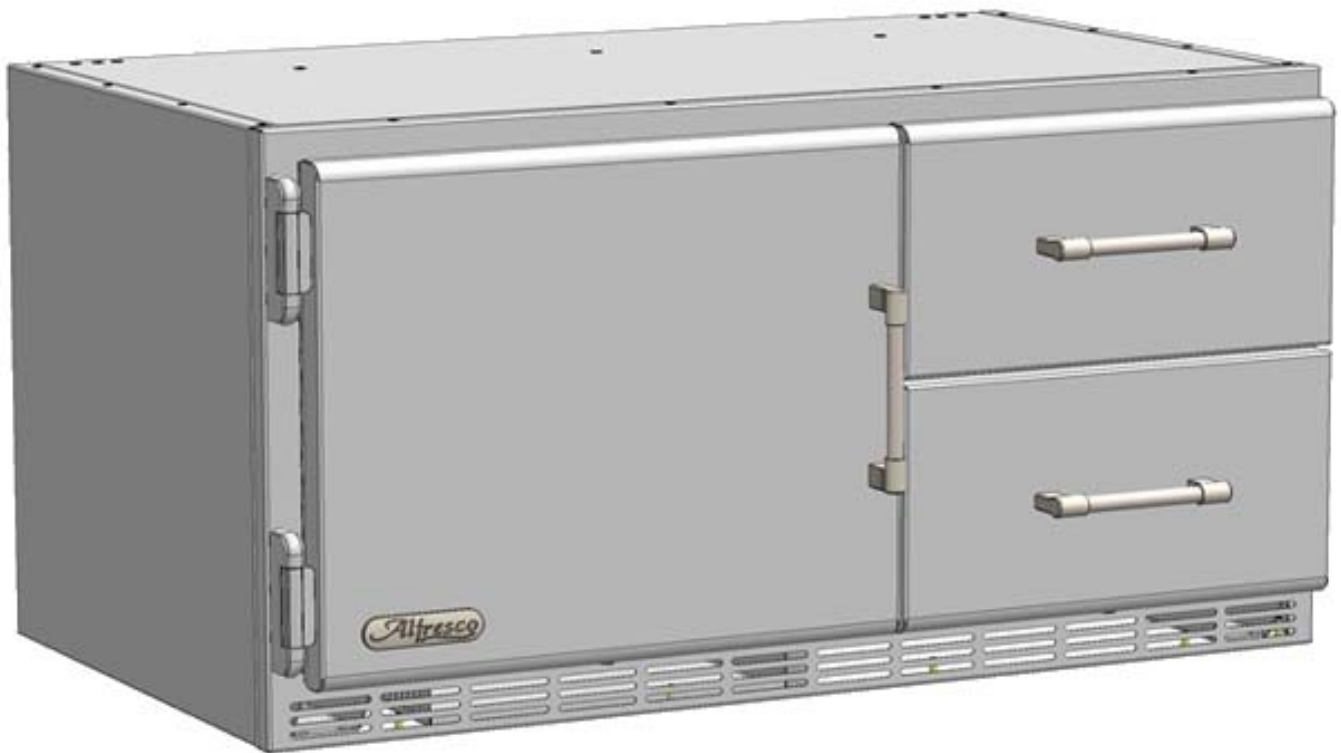


# Alfresco™

## **ARXE-42 SERVICE AND PARTS MANUAL**



## TROUBLESHOOTING AND SERVICE GUIDE

The following is intended as a brief service guide, designed to diagnose most common problems. It is intended to be used only as a guideline. Should the unit require replacement of components, those components must be replaced by a trained and licensed refrigeration professional. While the unit is within the factory warranty period, all repairs require factory authorization before the work is performed.

### UNIT NOT COOLING:

- **POWER TO THE UNIT:** Is there power to the unit? Is the voltage within  $\pm 10\%$  of 115 VAC? Low power conditions affect the amperage draw of the compressor, therefore requiring more amperes at start up. If the amperage draw is too high, the compressor safety relay could trip, leading to component premature failure. If the compressor is tripping on its safety relay at startups, then the unit will not refrigerate as required.
- **COMPRESSOR NOT RUNNING:** When the unit calls for cooling to begin, power is supplied to the compressor and condenser fan simultaneously, but the power to the compressor is via a time delay set to ten minutes. Therefore, the fan will run for ten minutes before the compressor starts; this is normal.
- **CONDENSER FAN NOT RUNNING:** Is the compressor running but not the condenser fan? If the compressor is running, then the condenser fan should be running. Verify that power is being supplied to the fan motor, and that the fan blades rotate freely. Check for debris (leaves, paper, grass clippings, etc.) in the fan blades, these may prevent the fan from rotating.

### UNIT NOT HOLDING TEMPERATURE CORRECTLY:

- **EVAPORATOR INTAKE:** Is the evaporator coil intake blocked by product? The evaporator unit has been designed to prevent products such as bottles, cans or other rigid packaging from blocking the intake. However, products in soft flexible packaging may still be positioned in a way which blocks some, or all of the air intake slots. If the air intake slots are obstructed, then products must be rearranged to clear the slots, thereby permitting air to be drawn into the evaporator coil.
- **DIGITAL TEMPERATURE CONTROL:** Is the control set correctly? Please refer to the recommended settings in the user manual, and follow the instructions for setting the control. If the thermostat is not set to suit the prevailing conditions, then the product may not be refrigerated to your liking. The wrong setting may also cause condensation to form inside the unit, or excessive ice to form in the evaporator coil, thereby blocking air flow through the coil.

## **NOISY OPERATION:**

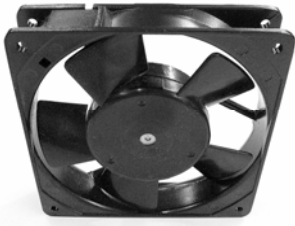
- **AMBIENT TEMPERATURE:** Is the ambient temperature about 90°F or above? The unit will need to run more at these elevated temperatures, therefore you will become more aware of sound generated by the compressor and the fans.
- **REQUIRED RUN TIME:** Is the unit running continuously for long periods of time? As the ambient temperature rises, the refrigerator requires more cooling, therefore sound from the compressor and fans will become more noticeable.
- **RESIDUAL HEAT:** Is the unit located outdoors on a concrete or paved slab, or in a sunny area? Residual heat present in the concrete or paving will raise the temperature of the intake air entering the front of the unit. Consequently, the air moving through the condenser coil may be relatively hot and therefore less efficient at cooling, causing the unit to run longer in order to maintain the proper refrigerating capacity.
- **DEBRIS IN THE FAN BLADES:** Is there debris in the condenser fan blades? Not only can debris physically stop the fan from rotating (as previously discussed), it can also block or restrict air flow, thus preventing the unit from cooling. The fan blades may, in some cases, continue to rotate, causing a rattling or similar sound as the blades contact debris trapped in close proximity to the fan.
- **FULLY STOCKED:** Is the unit fully stocked? If the unit is not fully stocked, or only partially filled, then the unit will need to work harder. Air does not hold temperature, products do. If there is no product inside the refrigerator, the unit will cycle ON and OFF several times per hour. If the unit is fully stocked, the run-time will be extended but also the off-time, allowing the compressor to cool down properly between cycles. This will help the unit to run more efficiently.

## **PERFORMANCE ENVELOPE:**

The ARXE-42 has a performance envelope up to 110°F ambient temperature. This means that the unit is capable of maintaining an internal cabinet temperature of between 22°F and 40°F when exposed to 110°F ambient air temperature. In order to maintain the internal cabinet temperatures stated above, the unit will operate without shutting off when the ambient air temperature exceeds 85 to 90°F. These peak temperatures occur at least for a few hours per day in hot weather locations and should be considered normal. The unit will return to normal cyclic operation after the ambient air temperature falls back below 85 to 90°F. Please note, ambient air temperature is a complex measurement to establish, especially outdoors. Your local weather forecaster, when reporting current conditions, will be referring to a temperature measured in a shaded and ventilated box located at least four feet above the ground. If the reported temperature is 100°F, and your unit is sat on or mounted just above a concrete slab in full sunlight, then the ambient temperature around your unit will be substantially higher than the reported 100°F.

## ARXE-42 SERVICE PARTS LIST:

The following is a list of all components and or hardware that are serviceable on the ARXE-42 refrigerator unit. Please refer to the picture and associated text for reference and identification.

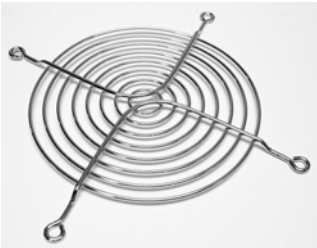


Evaporator Fan  
210-0025



Condenser Fan  
210-0405

Condenser Fan  
Mounting Nut  
200-0245



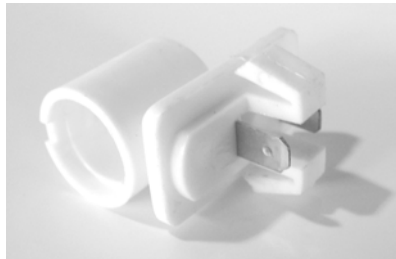
Finger Guard  
200-0013



Refrigerator Bulb  
210-0327



Main Power Switch  
210-0021



Lampholder  
210-0321



Power Cord  
210-0287



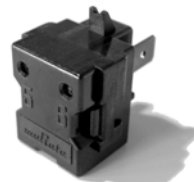
Compressor  
260-0108



Evaporator Fan  
Power Cable  
210-0020



Accumulator  
220-0356



PTC Relay  
260-0090



Filter Drier  
220-0029

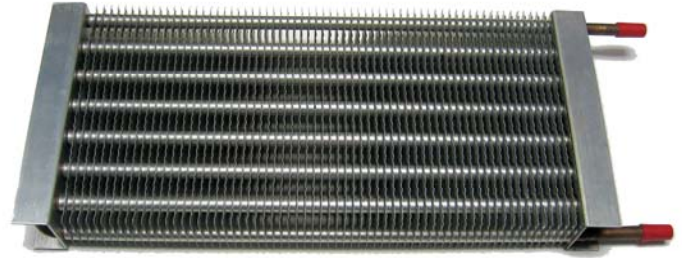


Overload Protector  
260-0091

# ARXE-42 SERVICE PARTS LIST CONTINUED:



Condenser Coil  
250-0072



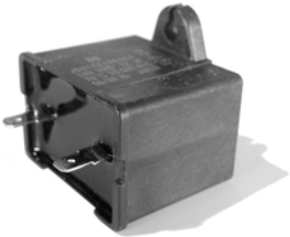
Evaporator Coil  
250-0025



Compressor  
Protector Cover  
260-0087



Strain Relief  
200-0009  
Used to secure power cord



Run Capacitor  
260-0092



Cable Tie  
(push mount)  
210-0258



Terminal Block  
210-0404



Door Hinge  
Replacement  
Kit  
290-0155



Light Switch  
210-0308



Fan Motor  
210-0401

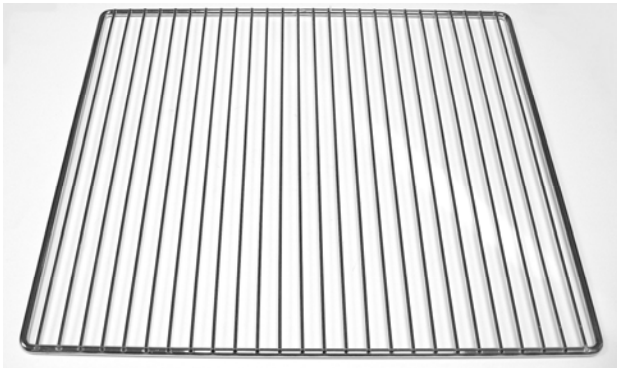
**ARXE-42 SERVICE PARTS LIST CONTINUED:**



**Food Pan**  
290-0130



**Rear Caster\***  
290-0079



**Wire Rack**  
230-0033



**Front Caster\***  
290-0080



**Washer**  
200-0074



**Lock Washer**  
200-0087



**Screw**  
200-0089

**Caster Mounting Hardware**  
4 each per caster



**Refrigeration Controller**  
210-0425



**Drawer Wheel**  
290-0077

**Drawer Wheel**  
Screw  
200-0257

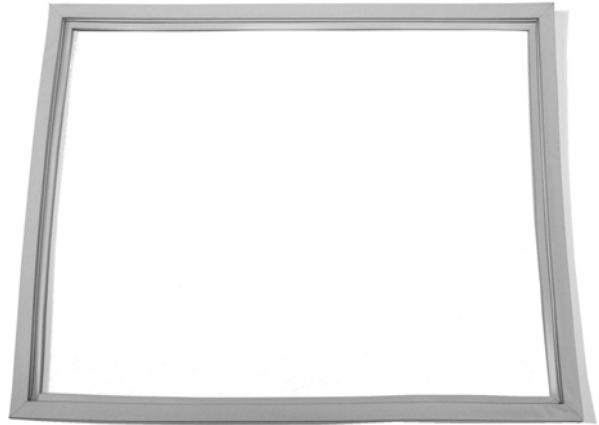


\* Casters are for BBQ refrigerated base model only.

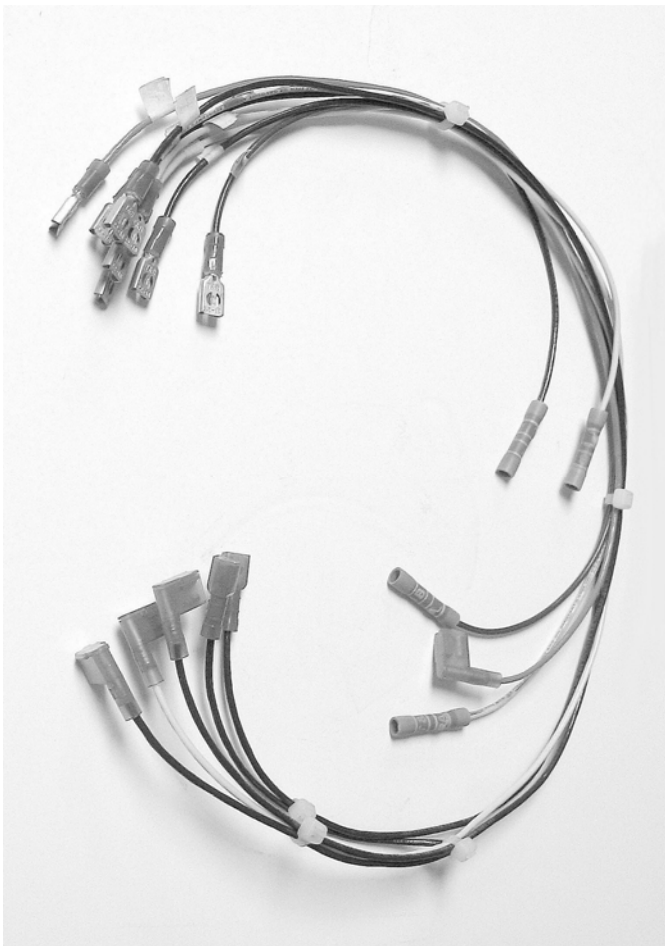
## ARXE-42 SERVICE PARTS LIST CONTINUED:



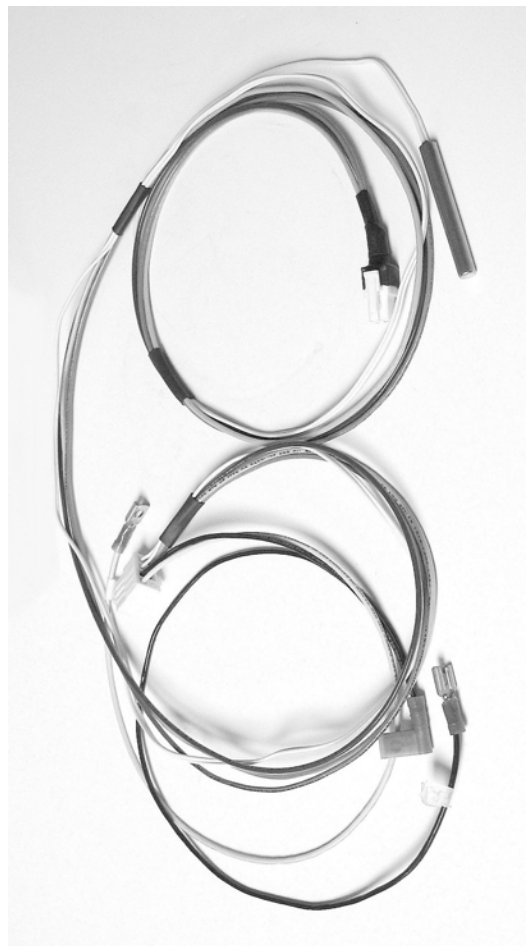
Drawer Gasket  
290-0227



Door Gasket  
290-0228

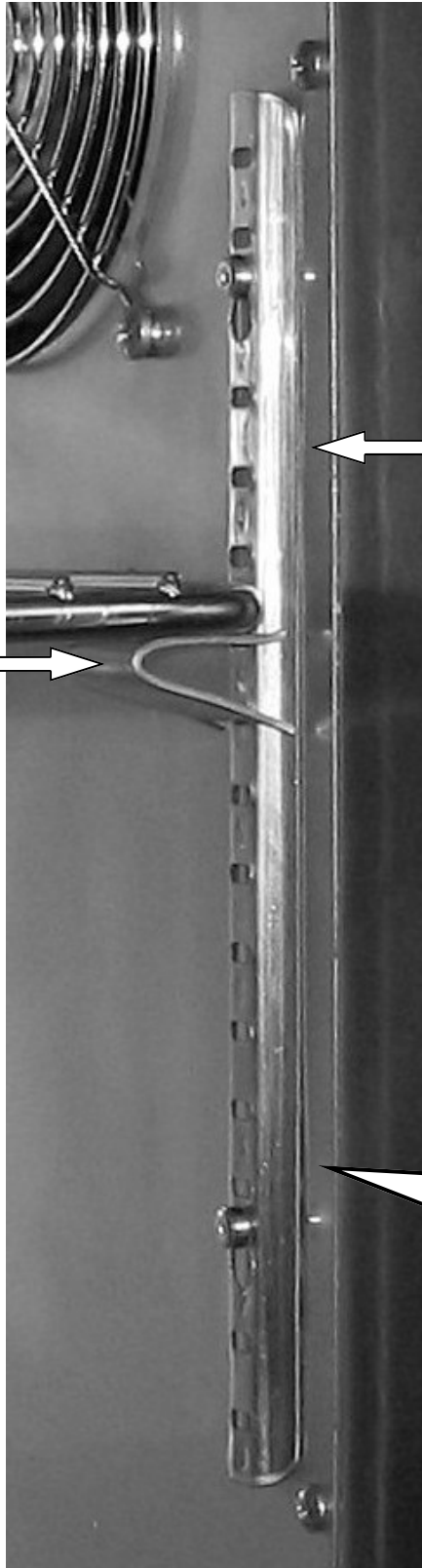


Main Wiring Harness  
210-0437



Controller Harness  
210-0438

# ARXE-42 SERVICE PARTS LIST CONTINUED:



Shelf Clip  
290-0140

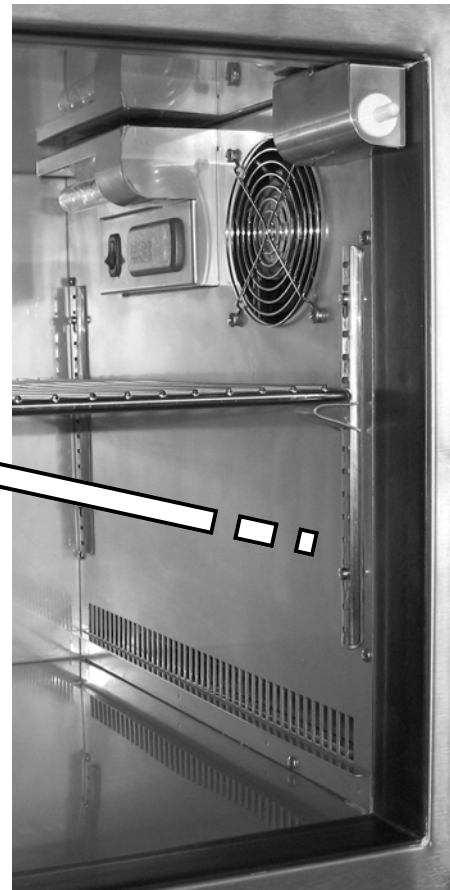
Pilaster  
290-0187



Keyhole Support  
290-0141

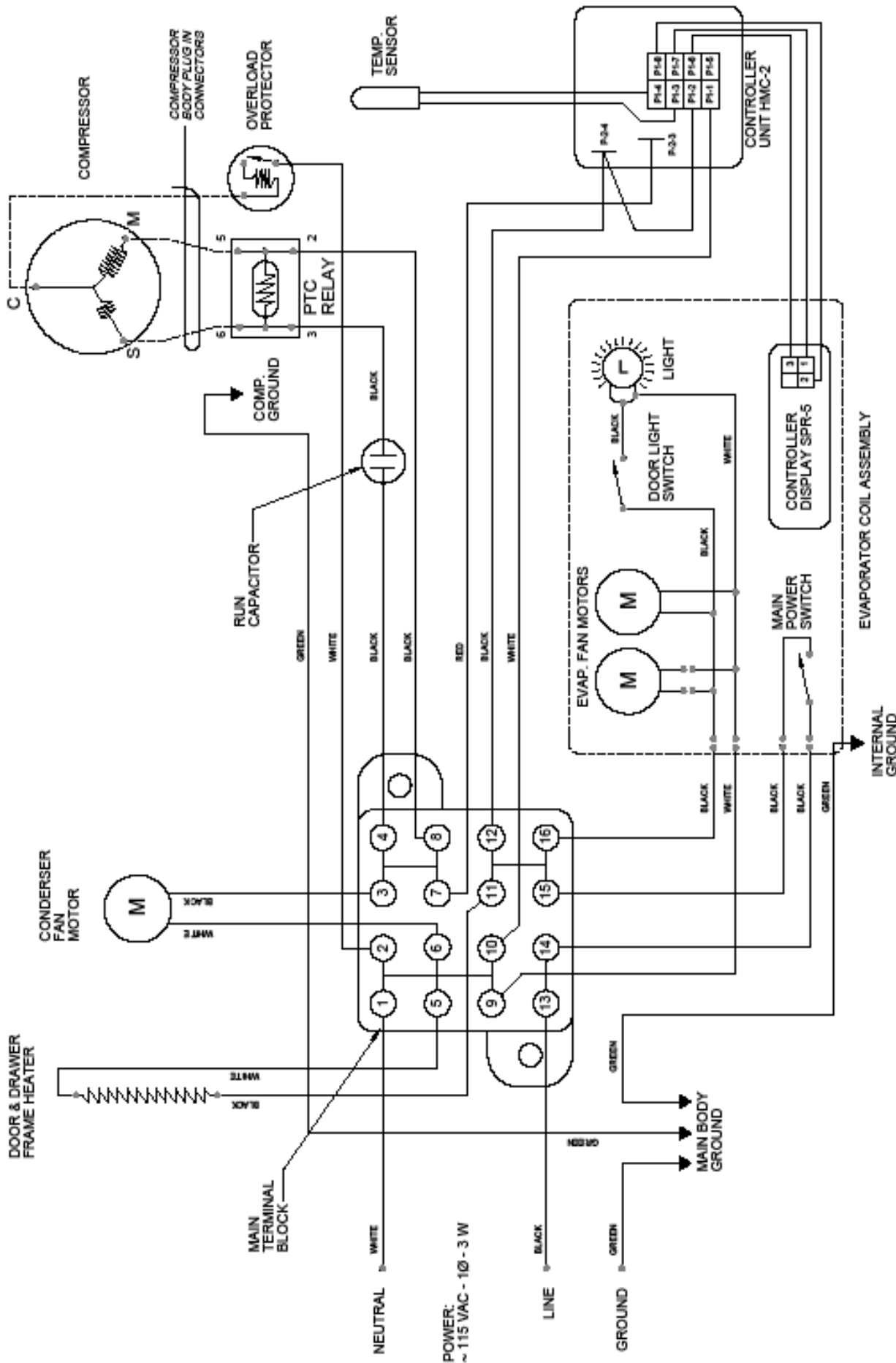


Pop Rivet  
200-0106



Shelf support pilasters and clips (brackets).  
Each unit contains 4 pilasters and 4 clips.





NOTE: CASE MUST BE GROUNDED

**Al Fresco**  
 SUPERIOR SOLUTIONS  
 2510 EAST SOUTHWEST AVENUE  
 COMMERCE, CA 90040

THE INFORMATION CONTAINED IN THIS DRAWING IS THE PROPERTY OF AL FRESCO. IT IS TO BE USED ONLY FOR THE EQUIPMENT SPECIFICALLY IDENTIFIED HEREIN. ANY REUSE OR MODIFICATION OF THIS DRAWING WITHOUT WRITTEN PERMISSION FROM AL FRESCO IS PROHIBITED.  
 CUSTOMER: SES  
 (Wiring Diagrams/ARFG)

DRAWN BY: ADRIAN CRISCI  
**MATERIAL:**  
**FINISH:**  
**WEIGHT:** Lb8.

CREATED: 11/15/2006 3:39:17 PM  
 PROJECT TITLE: ARFG-42  
 DRAWING TITLE:  
 ARFG-42 UNIT WITH RENAU CONTROL HMC-2

DRAWING NO.: W900-0044  
 PAGE SIZE:  
 LETTER  
 SHEET 1 OF 1

## ARXE-42 SERVICE DATA:

### ELECTRICAL:

- VOLTAGE: 115 VAC
- FREQ: 60 Hz
- PHASE: 1
- AMPS: 2.57
- RLA: 1.3
- LRA: 7.1
- MCA: 2.9

### REFRIGERATION:

REFRIGERANT 134A (9OZ)

#### SUCTION PRESSURE @ TEMP.

18 PSI @ 20°F

ACCEPTABLE RANGE: 12 - 21 PS I (COIL TEMP. 10°F - 24°F)

#### LIQUID PRESSURE @ TEMP.

125 PSI @ 100°F

ACCEPTABLE RANGE: 125 - 147 PSI (AMBIENT TEMP. 80°F - 90°F)

170 PSI @ 120°F

ACCEPTABLE RANGE: 170 - 197 PSI (AMBIENT TEMP. 100° - 110°F)



# FOR SERVICE, CALL: 1 866 203 5607

When calling, please provide the following information: model number , serial number and date of installation, along with a brief description of the problem. The model number and serial number can be found on a plate located near the top of the inside left wall.

