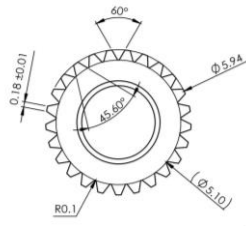
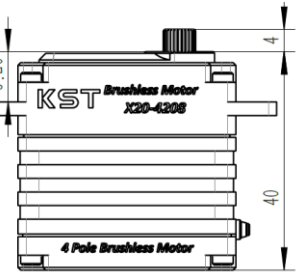
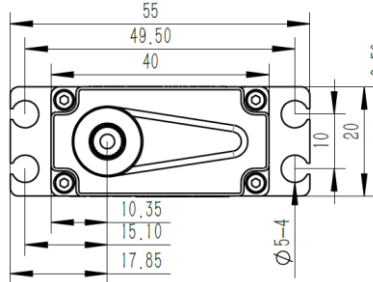


X20-4208 Technical Specification



25T

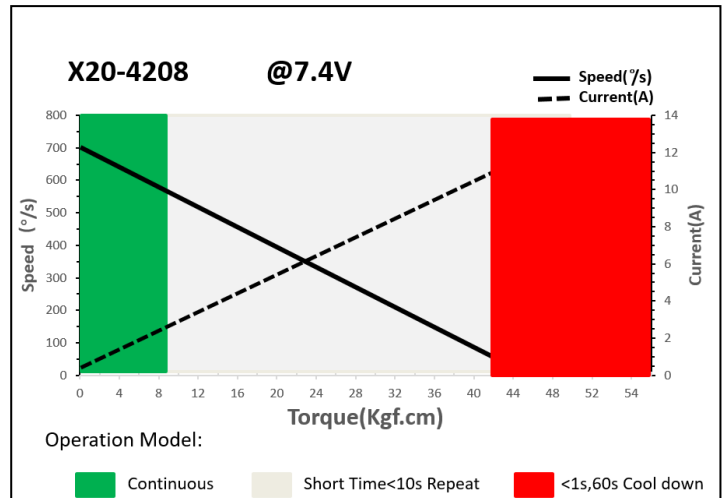
25T 6mm Output Shaft Spline



1. Operating Data

Rated Voltage	DC7.4V
Voltage Range	DC6.0V-8.4V
Torque	38Kgf.cm@6.0V
	42Kgf.cm@7.4V
	46Kgf.cm@8.4V
Speed	0.10sec/60°@6.0V
	0.08sec/60°@7.4V
	0.07sec/60°@8.4V
Stalling Current	8.80A@6.0V
	10.8A@7.4V
	12.3A@8.4V
Working Frequency	1520us/333Hz
Default Travel Angle	±100° =200° Total
Temperature Range	-20°C+65°C
Soft Start	Yes
Programable	Yes
Case Material	Aluminum Alloy
Motor Type	4 Pole Brushless DC Motor
Gear Set Material	Hardened Steel/ HLS
Position Sensor	Contactless
Ball Bearing	6BB
Waterproof	IP65
Case Dimensions	40mm*20mm*40mm±0.2mm
Weight	80g±10%

2. Performance



3. Command signal PWM Command Interface

Signal Voltage	HIGH: min.3.3V, max.5.0V Low: min.0.0V, max.1.5V
Pulse Lengths	500us-2500us
Pulse Lengths for Position -100°/ 0°/+100°	500us/1500us/2500us

4. Electrical Connection

Pin	Pin Assignment		
	1	Black (White mark)	Signal
2	Black (Red mark)	DC+	Supply Voltage
3	Black	DC-	Supply Ground