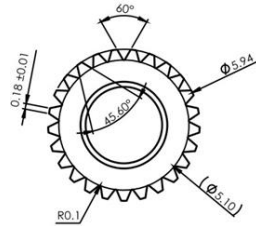
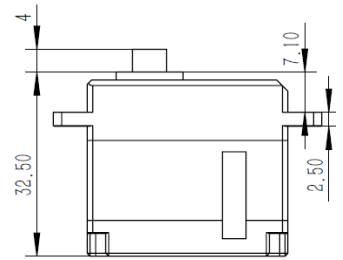
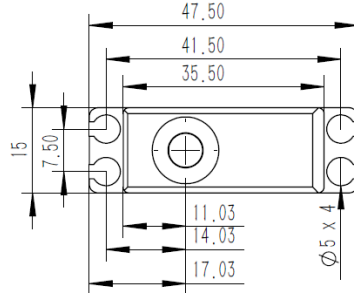


MS565 Technical Specification



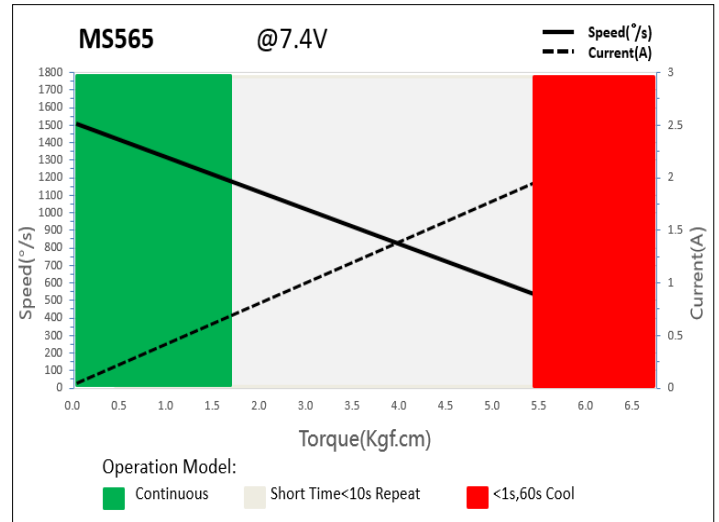
25T 6mm Output Shaft Spline



1. Operating Data

	MS565
Rated Voltage	DC7.4V
Voltage Range	DC6.0V-8.4V
Stalling Torque	4.2Kgf.cm@6.0V
	5.5Kgf.cm@7.4V
	6.5Kgf.cm@8.4V
No-load Speed	0.05sec/60°@6.0V
	0.04sec/60°@7.4V
	0.035sec/60°@8.4V
Working Frequency	760us/560Hz
Temperature Range	-10℃+65℃
Soft Start	Programmable
Programmable	Yes
Case Material	Aluminum Alloy
Motor Type	Coreless DC Motor
Gear Set Material	Hardened Steel
Position Sensor	Contactless
Case Dimensions	35.5mm*15mm*32.5mm±0.2mm
Weight	38g±10%

2. Performance



3. Command signal

PWM Command Interface

Signal Voltage	HIGH: min.3.3V, max.5.0V Low: min.0.0V, max.1.5V
Pulse Lengths	450us-4050us
Working Frequency	760us/560Hz

4. Electrical Connection

	Pin Assignment			
	1	Orange	Signal	PWM Command
	2	Red	DC+	Supply Voltage
	3	Brown	DC-	Supply Ground