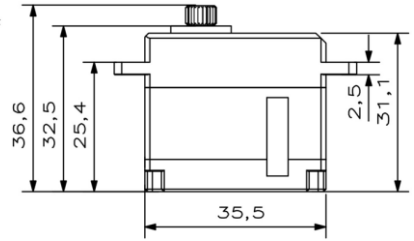
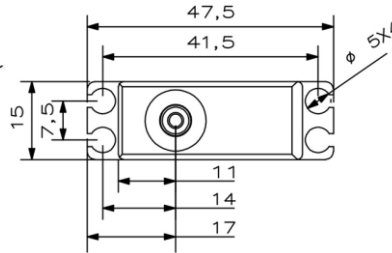
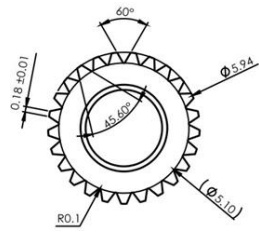


DS589MG V8.0 Technical Specification

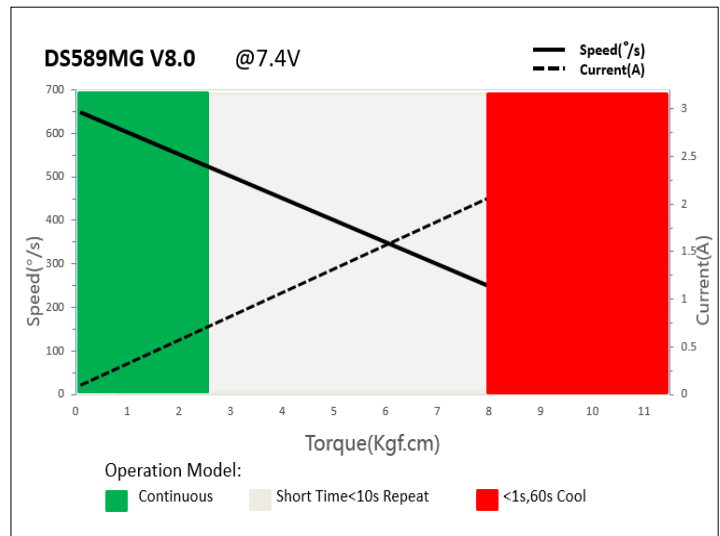


25T 6mm Output Shaft Spline

1. Operating Data

DS589MG V8.0	
Rated Voltage	DC7.4V
Voltage Range	DC6.0V-8.4V
Stalling Torque	6.5Kgf.cm@6.0V
	8.0Kgf.cm@7.4V
	9.2Kgf.cm@8.4V
No-load Speed	0.10sec/60°@6.0V
	0.09sec/60°@7.4V
	0.08sec/60°@8.4V
Working Frequency	1520us/333Hz
Default Travel Angle	±60°=120° Total
Temperature Range	-20°C+65°C
Soft Start	Programmable
Programmable	Yes
Case Material	Aluminum Alloy
Motor Type	Coreless DC Motor
Gear Set Material	Hardened Steel
Position Sensor	Potentiometer
Case Dimensions	35.5mm*15mm*32.5mm±0.2mm
Weight	40g±10%

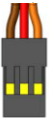
2. Performance



3. Command signal PWM Command Interface

Signal Voltage	HIGH: min.3.3V, max.5.0V Low: min.0.0V, max.1.5V
Pulse Lengths	900us-2100us
Pulse Lengths for Position	1000us/1500us/2000us -50% 0°/+50°

4. Electrical Connection

 3 2 1	Pin Assignment			
	1	Orange	Signal	PWM Command
	2	Red	DC+	Supply Voltage
	3	Brown	DC-	Supply Ground