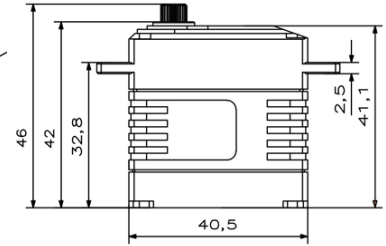
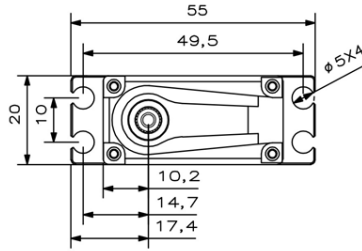
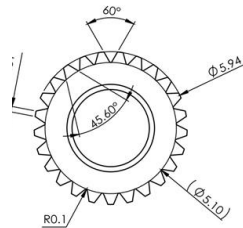


A20-4515 Technical Specification

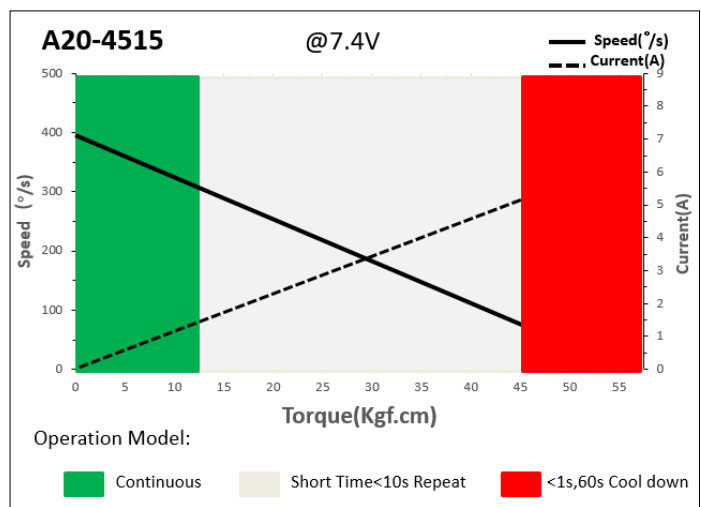


25 1 6mm Output Shaft Spline

1. Operating Data

	A20-4515
Rated Voltage	DC7.4V
Voltage Range	DC6.0V-8.4V
Stalling Torque	36Kgf.cm@6.0V
	45Kgf.cm@7.4V
	50Kgf.cm@8.4V
No-load Speed	0.19sec/60°@6.0V@25°C
	0.15sec/60°@7.4V@25°C
	0.13sec/60°@8.4V@25°C
Working Frequency	1520us/333Hz
Default Travel Angle	±50°=200°Total
Temperature Range	-10°C.....+65°C
Case Material	Aluminum Alloy
Motor Type	Brushless DC Motor
Gear Set Material	Hardened Steel
Position Sensor	Potentiometer
Ball Bearing	2BB
Case Dimensions	40.5mm*20mm*42mm±0.2mm
Weight	72g±10%

2. Performance



3. Command signal

PWM Command Interface

Signal Voltage	TTL-level: HIGH: min.3.3V, max.5.0V Low: min.0.0V, max.1.5V
Pulse Lengths	900us-2100us
Pulse Lengths for Position	1000us/1500us/2000us-50% 0°/+50°

4. Electrical Connection

 3 2 1	Pin Assignment			
	1	Orange	Signal	PWM Command
	2	Red	DC+	Supply Voltage
	3	Brown	DC-	Supply Ground