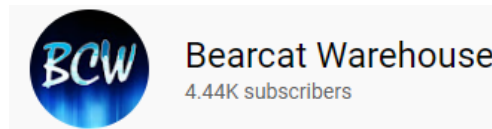




Please Follow the Instructions below to install Sentinel Software

This Software is only Windows PC compatible

For more helpful Information & Videos you can find us on YouTube here:



Step 1: Download the Software

BCDx36HP Scanners:

This applies to: **(BCD436HP)(BCD536HP)(SDS100)(SDS200)**

https://cdn.shopify.com/s/files/1/0570/0177/1148/files/Setup_BCDx36HP.msi?v=1653494672

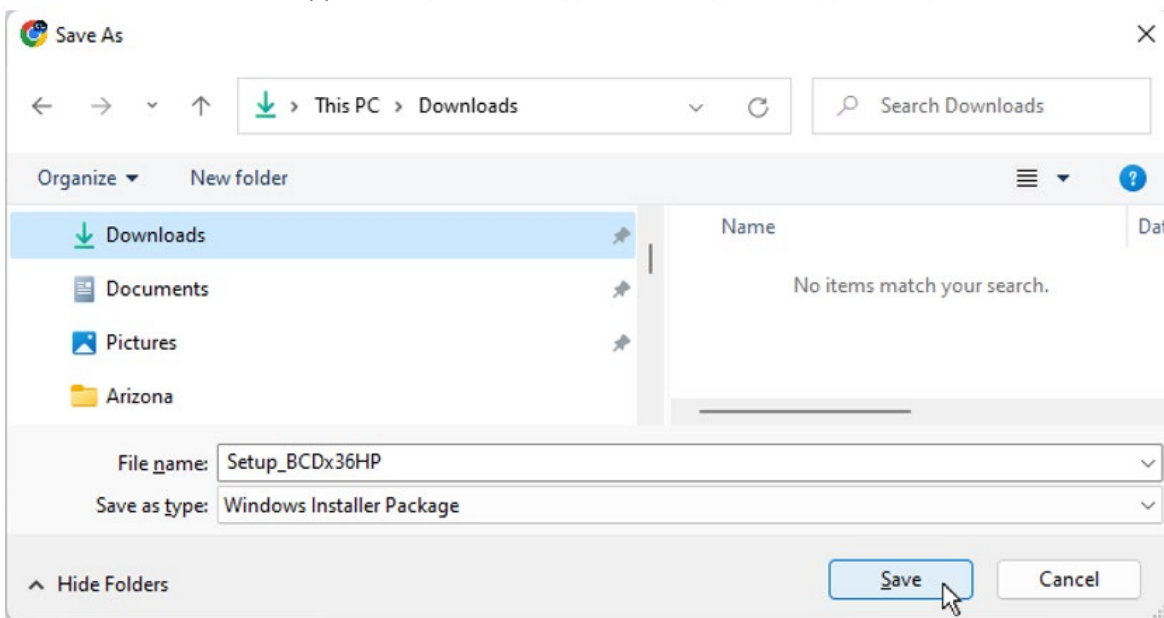
HomePatrol Sentinel:

This applies to: **(HomePatrol-1)(HomePatrol-2)**

http://info.uniden.com/twiki/pub/HomePatrol/HomePatrolSentinel/HomePatrol_Sentinel_2_03_02.zip

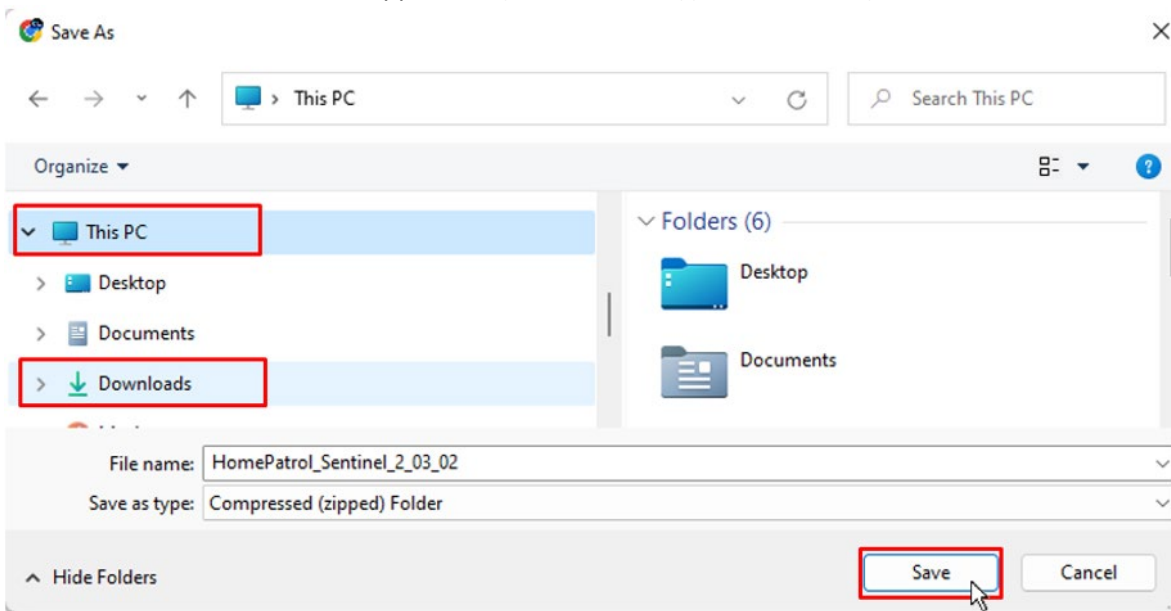
BCDx36HP Download Example:

This applies to: (BCD436HP)(BCD536HP)(SDS100)(SDS200)

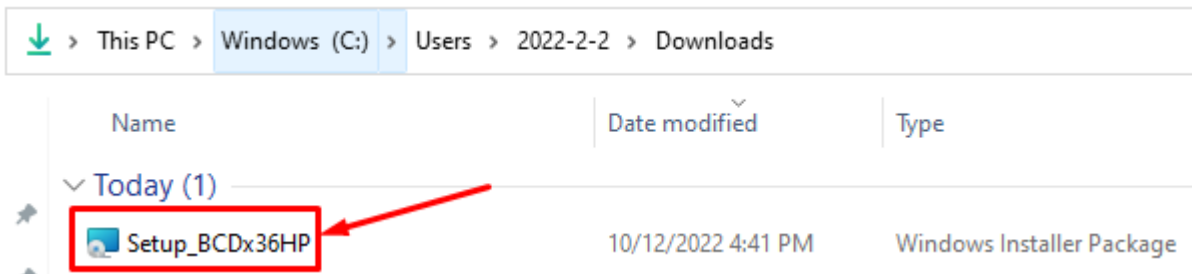


HomePatrol Download Example:

This applies to: (HomePatrol-1)(HomePatrol-2)



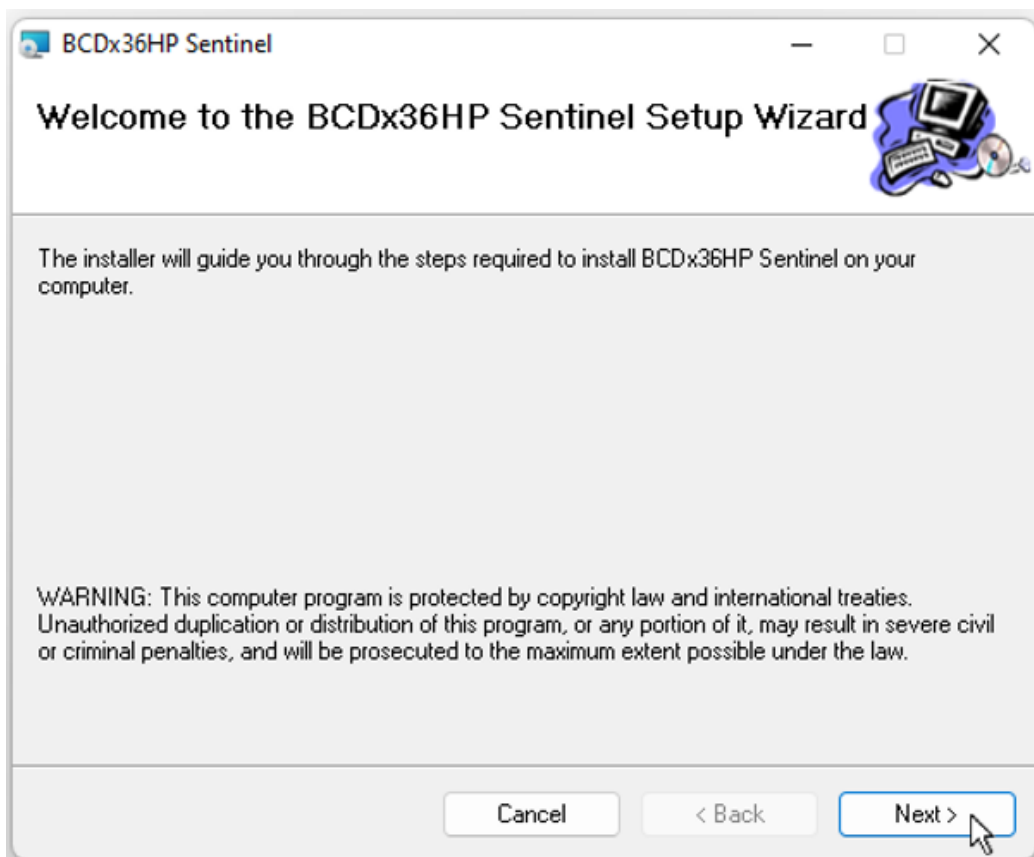
Step 2: Install the software



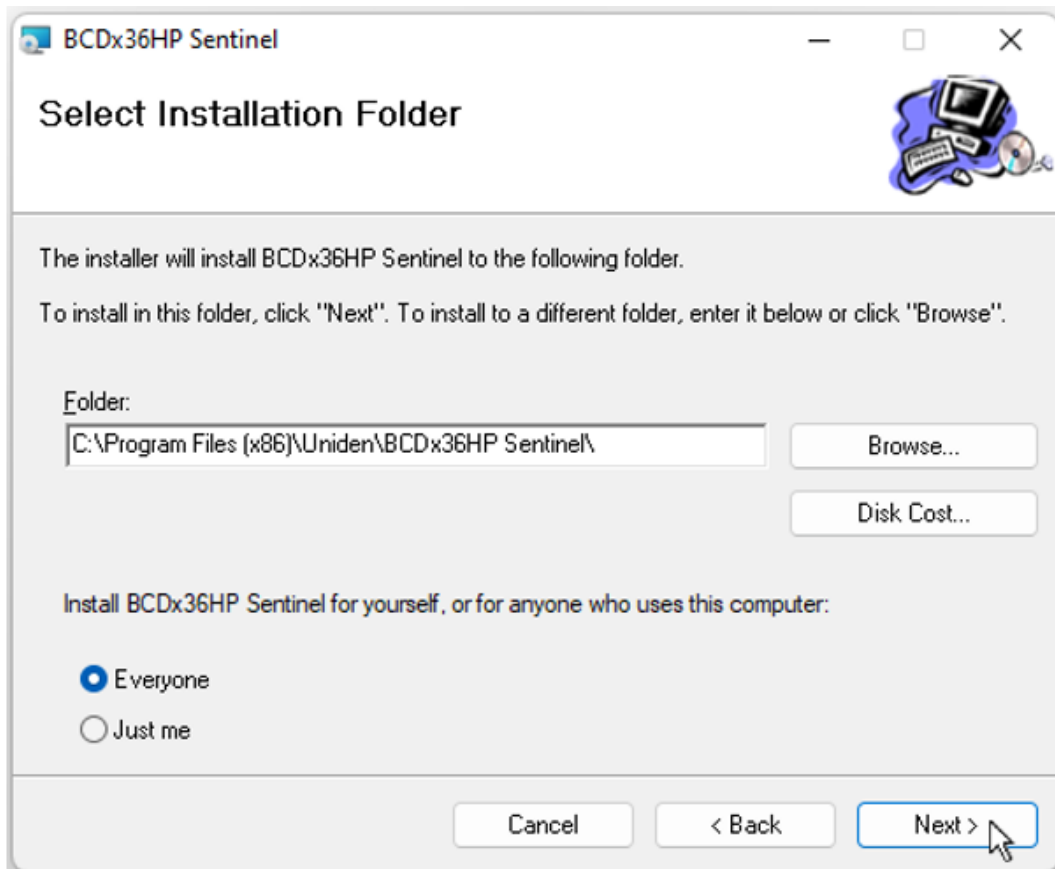
The screenshot shows a Windows File Explorer window with the address bar set to 'This PC > Windows (C:) > Users > 2022-2-2 > Downloads'. The main area displays a table of files:

Name	Date modified	Type
Today (1)		
Setup_BCDx36HP	10/12/2022 4:41 PM	Windows Installer Package

Follow the Prompts to complete the installation
(Click the next button)



Select a Desired folder to save the software
Follow the next prompt to complete Installation
(Click the next button)



Step 3: Run the Software

(Once installation is complete click the Sentinel Icon to run the software)
(X36 Users will have a Green Sentinel Icon, Homepatrol-2 Users will have an Orange Sentinel Icon)

