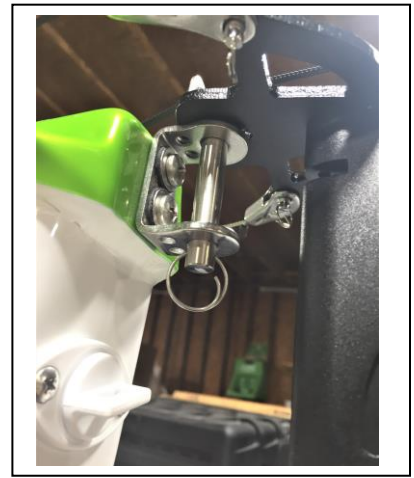
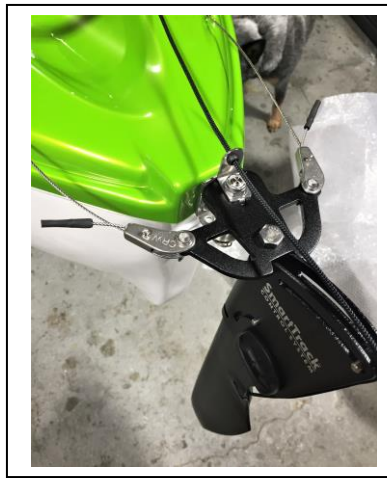


## Hurricane Rudder installation instructions –SWEETWATER

### Parts List

- 2 - Black Rudder Tubing (cut to approximate length; installed on RR versions)
- 2 - Rudder Cable (cut to approximate length)
- 2 - 1.5 inch self tapping pan head screws with rubber backed washers (installed on RR)
- 4 - 2 inch self-tapping screws (for installing footrails)
- 1 - Rudder Mount
- 4 - Cable crimps
- 2 - Shrink tubing
- 2 - 0.5 inch self-tapping pan head screws
- 1 - Smart Track Rudder Housing with rudder pin and deck assembly parts kit
- 1 - Rudder blade
- 2 - Sealect Designs Toe Pivot Control Foot Braces
- 4 – Black bushings pieces to set the footbraces out from the side of the hull
- 4 - Footrail U-Brackets

Install rudder bracket on stern with 1.5 inch self tapping screws (2) with rubber backed washers. On Sweetwaters, the rudder bracket goes on the colored portion of the boat, just above the deck hull joint. Drill pilot holes into factory installed block inside stern. There should be divots in the plastic showing you where to drill. (In RR versions, the bolts will already be installed; just install the rudder mount with these bolts).

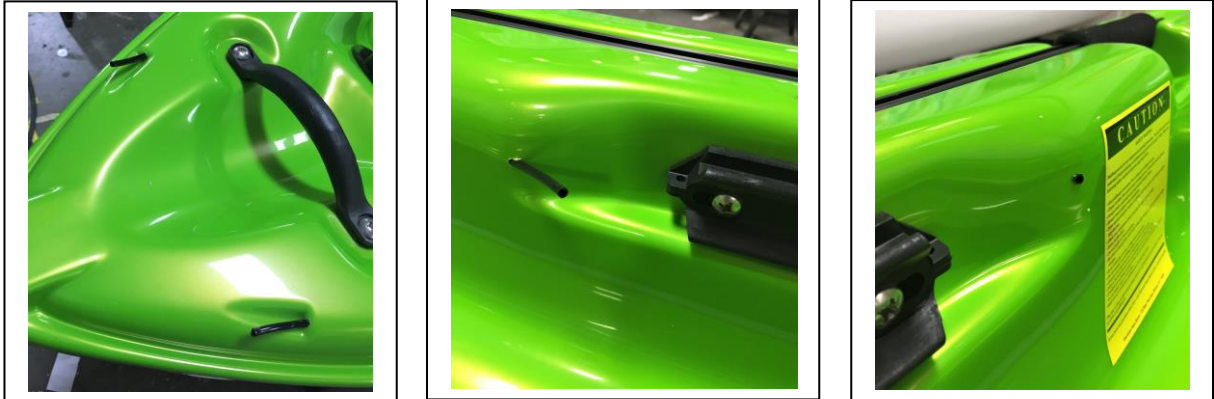


Set rudder pin into bracket and secure with ring clip. Use nylon washers as needed to take up any vertical play. Make sure it pivots freely.

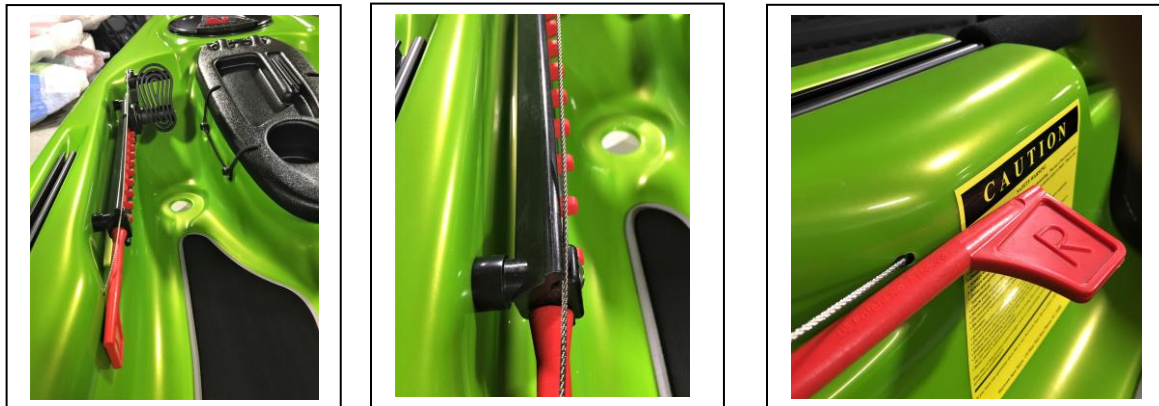
Install rudder blade onto pivot as per written SmartTrack instructions. Tighten tension knob so that the blade deploys easily.

Drill holes in the bosses (i.e. "frog eyes") on the back deck for cable tubing (already done in RR versions). Make sure to use a drill bit small enough that the cable tubing pulls

through tightly. Tubing should exit the hull just in front of the footbrace area. See pictures. Trim all tubing before inserting cable.



Remove original foot braces, and install new foot braces using 2 inch self tapping screws and black bushing spacers that make it so the red twist-lok on the foottrails can turn freely after install. The footbraces will also need to be installed approximately ½ inch higher than the old foottrails to work properly. Don't worry, there is a solid PVC block behind the footrail so the holes left below will not leak (although you can install the old screws in those holes if you prefer).



Route the rudder cable from the rear through the tube into the cockpit area. Route the cable through the foot brace as shown in this online video -

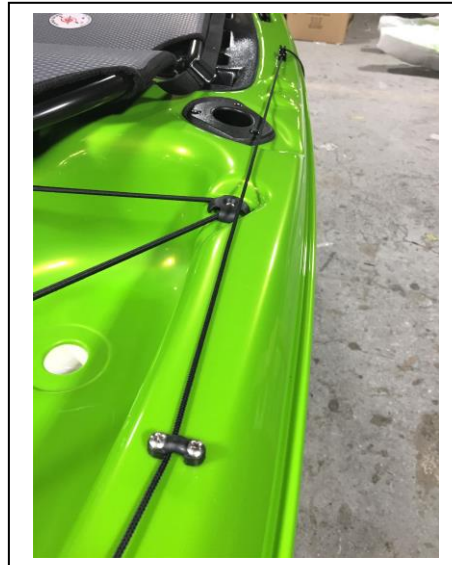
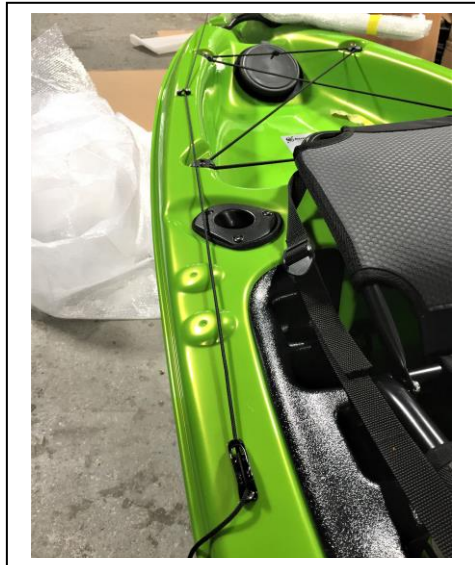
[https://www.youtube.com/watch?v=1G8LT1\\_MWO4](https://www.youtube.com/watch?v=1G8LT1_MWO4)

**Be aware that your kit does not include the micro adjuster.** After the cable is inserted through the last hole in the foot brace use a cable crimp on the end so it doesn't pull back out. Cut the small bungee in half and attach from the front of each foot peg to the designated hole. Tie a knot at each end stretching the bungee to provide medium tension.



Install pivoting cable holders to rudder pivot with clevis pin and ring clip. Adjust foot braces evenly. Pull the cables rearward to eliminate slack. Run cable through cable holder and back forming a loop. Install wedge while maintaining light tension on cable. Check operation of rudder by pushing on foot braces to make sure it works evenly. Adjust cable at wedges if necessary. Install cotter pin and fold over. Cut off excess cable. Slide shrink tubing on end of cable and heat to shrink it.

Install rudder deployment string through rudder and pivot as per illustration on SmartTrack instructions. Install cleat (teeth facing forward) near rear of cockpit about 1.5 inches in from edge of deck. Avoid the bulkhead on sit-inside and any internal foam on sit-on-tops. Ideally it should be on the paddler's less dominant hand so the dominant hand can hold the paddle while deploying the rudder. Install guide loops evenly spaced between rudder and cleat. These should be just outside the deck lines. Run string through guide loops and cleat. Run string through ball and rubber grommet and tie off string while the rudder is in the deployed position. The ball should end up just forward of the cleat. Cut off excess string.



Throw boat in water and paddle.

Note: You can glue the cable tubing to the inside of the boat with a little thickened epoxy so it won't flop around or tape to the interior sides using HVAC or thermoform tape.



