

A detailed landscape painting in a classical style. The scene depicts a wide river valley with a river winding through the center. The foreground is dominated by large, dark green trees with intricate foliage. In the middle ground, the river flows through a valley with rolling hills and more trees. The background features a range of mountains under a pale, hazy sky. The overall color palette is muted, with greens, browns, and greys, giving it a historical and serene feel.

FINE & DANDY

LOOKBOOK



**DESIGNERS OF COMMERCIAL GRADE
AND CUSTOM WALLCOVERINGS**

STORYBOOK

fineanddandycompany.com

📷 [fineanddandyco](#)

FINE & DANDY C^o.

Somewhere between splendiferous and fanciful sits a small unassuming manor house. What lies within will soothe weary sensibilities that may have grown dull by the journey across the Sea of Beige. All may not be as it seems, but that's just Fine & Dandy.



MURALS

What shall today's destination be? Rolling green hills, an enchanted forest, or an old library heavy with the perfume of leather and aging books? Perhaps a tavern, or an old theatre?

Capturing a curious moment in the past... an exotic jungle or the inside of a painting. Perhaps somewhere entirely fantastical where monkeys drink tea and the birds recite poetry.

You can go anywhere really. You decide.

THE BABYLON COLLECTION

If I were a mythical deity I'd likely wander through an idyllic gardenscape, while cavorting with water sprites in a shimmering pond nearby. Mere mortals would never be granted permission to inhabit such an unearthly realm. Fortunately Dears, you're traveling with me!



BABYLON

Inspired by Versailles, installed in Versailles
Decorator: Andres Alsina
VISIT PATTERN

BABYLON



HALCYON



AEGEAN



EDEN



ELYSIUM





AEGEAN

VISIT PATTERN



ELYSIUM

VISIT PATTERN



HALCYON

VISIT PATTERN



EDEN

VISIT PATTERN

FANTASTICHERIA

Plaster, stone, wood and earth hold memories, etheric remnants dusted in pigment,
layered like trifle encased in a candy coated skin.

You are not alone, walls might have ears...or eyes.

Words could form out of thin air, simply out of their desire to name something.

It's the sort of place one might wish to inhabit more fully,
because 'more' is where jollity begins.

Welcome to Fantasticheria

FACADE



PANTOMIME



ARIA



AMPHITHEATRE



IL CONSERVATORIO



ARIA



STONE



ROOT



LICHEN



Available as individual 4' w x 10' h panels or as a continuous wrap of 6 unique interchangeable scenes.

VISIT PATTERN

Design elements hand painted by Fine Artist Hazel Lee Santino



UMBRIA



GELATO



VERDIGRIS

Design elements hand painted by Fine Artist Hazel Lee Santino

CARNEVALE - Large Scale (50" W)



[VISIT PATTERN](#)

CARNEVALE - Small Scale (23" W)



VERDIGRIS



GELATO



UMBRIA



VISIT PATTERN

Design elements hand painted by Fine Artist Hazel Lee Santino



GNOME



CHANGELING



DRYAD



SPRITE



NYMPH

Design elements hand painted by Fine Artist Hazel Lee Santino



GROTTO - Large Scale (50" W)

[VISIT PATTERN](#)

GROTTO - Small Scale (23" W)



SPRITE



CHANGELING



DRYAD



GNOME



NYMPH



[VISIT PATTERN](#)

Design elements hand painted by Fine Artist Hazel Lee Santino

TEATRO - Large Scale (52" H)



ANTIQUITY



FRAGMENT



GROVE



ONYX



Design elements hand painted by Fine Artist Hazel Lee Santino

VISIT PATTERN

TEATRO - Small Scale (26" H)



[VISIT PATTERN](#)

ONYX



FRAGMENT



GROVE



ANTIQUITY



Design elements hand painted by Fine Artist Hazel Lee Santino

FRIEZE - Large Scale (52" H)



Design elements hand painted by Fine Artist Hazel Lee Santino

VISIT PATTERN

PANORAMIC COLLECTION

It's time to wander and traverse vast unexplored places. It's advisable to pack a sandwich, or two, perhaps some delicious tarts or vittles. We're going to venture across ponds and streams, hillocks and hollows. Whatever you do Dear, ensure you have ample sustenance on hand, it's going to be a journey and it's going to be rather a jolly one.

CHATSWORTH



Available as individual 12' w x 4' h murals or as a continuous wrap of 2 or more murals. Scenes must be consecutive to wrap.

VISIT PATTERN

Custom Chatsworth Mural. [Contact us](#) for details

SHERWOOD

16'



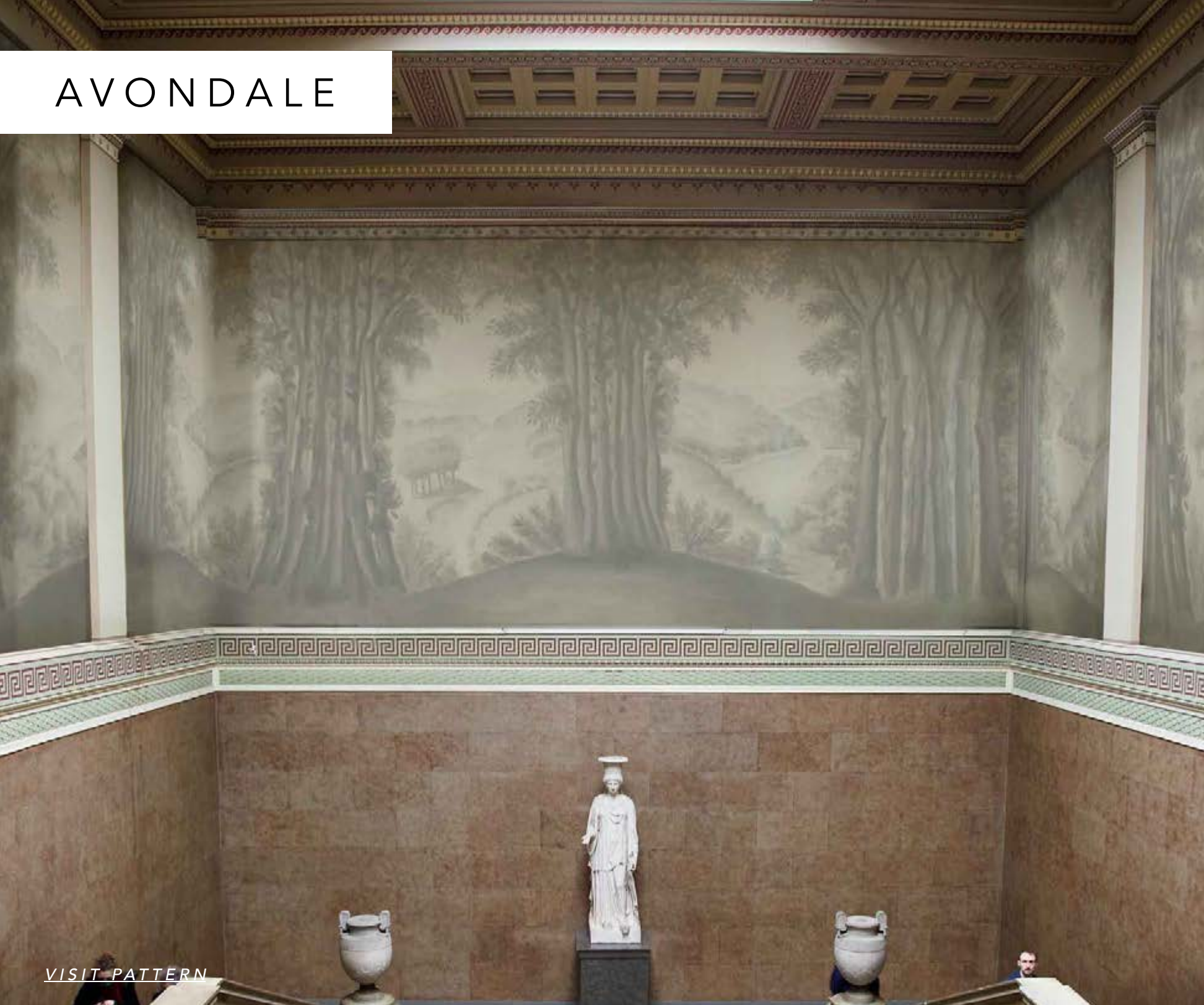
32'



An original hand painted adaptation of a watercolor by William Beilby, 1778



AVONDALE



VISIT PATTERN

16'



32'



An original hand painted adaptation of a watercolor by William Beilby, 1778



ZANZIBAR



OASIS



ARCHIPELAGO



ZANZIBAR



OLYMPUS

VISIT PATTERN

IMAGINARIUM



MYSTIC



AGATE



SEPIA



MALACHITE



GYPSUM

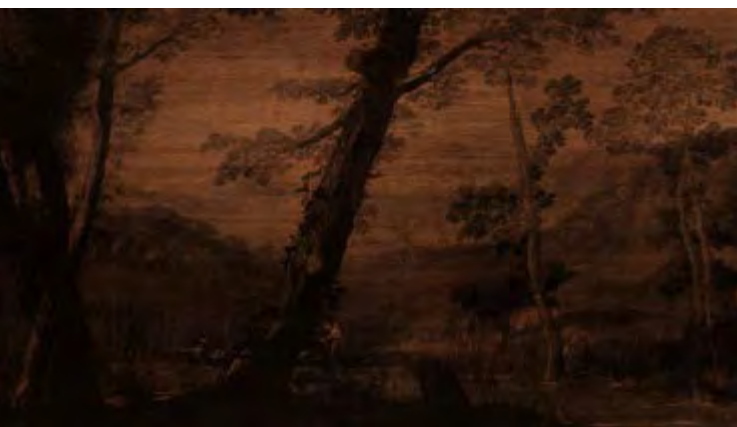




BULLION - Printed on
Metallic Marcasite



SILVER - Printed on
Metallic and Metallic
Marcasite



BOIS - Printed on
Wood Veneer

IMAGINARIUM ATELIER



VOYAGEUR





GEORGE



EDWARD



BEAUMARIS

BOTANICA



ELDERBERRY



FOREST



PARCHMENT



ARBORETUM





HEAVENLY



AMBROSIA



EMPYREAN



RAPTURE



MON DIEU!

VISIT PATTERN

TITANIA



In collaboration with collage artist Loraine Mohar.

VISIT PATTERN

OPHELIA



In collaboration with collage artist Loraine Mohar.

[VISIT PATTERN](#)



CALLIOPE

In collaboration with collage artist Loraine Mohar.

[VISIT PATTERN](#)



PERSEPHONE

[VISIT PATTERN](#)

ODYSSEY



VISIT PATTERN

MERCHANT



PIRATE



AUDUBON

PANEL 1

PANEL 2

PANEL 3



[VISIT PATTERN](#)

ORDER THE FULL THREE-PANELLED MURAL OR ORDER BY INDIVIDUAL PANEL TO CUSTOMIZE.

VAPOUR



VISIT PATTERN

DAWN



STORM



DUSK



ARBORETUM



DAYBREAK IN THE GARDEN



MIDNIGHT IN THE GARDEN



VISIT PATTERN

MIDNIGHT IN
THE GARDEN



DAYBREAK IN
THE GARDEN



ARBORETUM





COSMIC



COSMIC
METALLIC

Original painting by Shelley Weinreb



COSMIC

VISIT PATTERN

BUSTLE



NEON



NEWSPRINT



TRANSFERWARE



TRIANON



Original painting by Shelley Weinreb



WONDEROOM



SNUFF



OPERA



POMPADOUR



BOHEME

Time slows, colours become sharper and more vivid. Light burnishes the world in a deep shade of gold, and the veil between the past and the present lifts for a moment. In the stillness, It's tempting to sit and listen to what the wind has to say, but why not just see for yourself?

NOMAD



VISIT PATTERN

BUCK



MAGENTA



CERULEAN

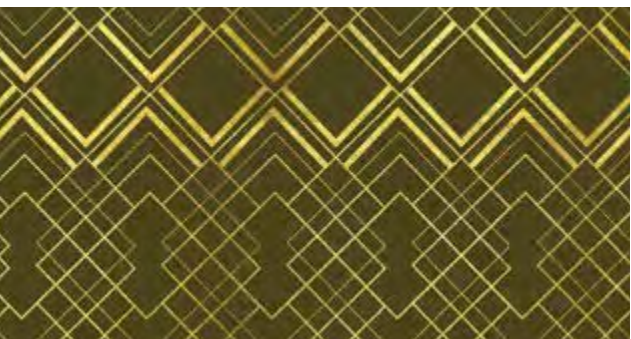


BLUSHING VIOLET

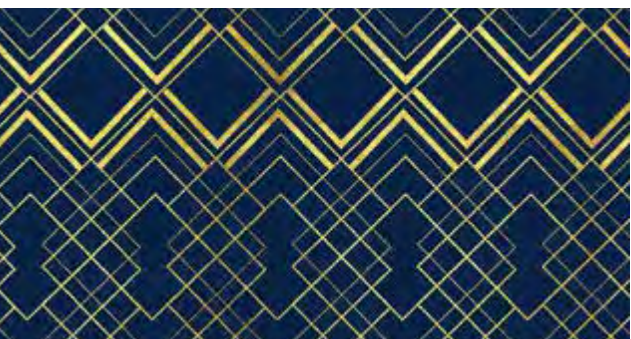




PEARLY WHITE



ARMY GREEN



MARINE



COPPER



LUSTRE

TANGIER



EMERALD



AU NATUREL



BROCADE



IVORY



EBONY



FLORA & FAUNA

Crickets and birdsong make for an intoxicating lullaby. Add in a babbling brook, the heady fragrance of blooming jasmine, and you have the makings of a perfect midsummer's night. All is in perfect, natural harmony.

Wait, did that bunny just wave?



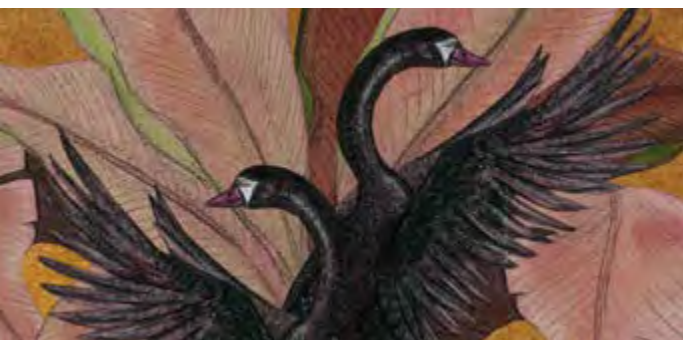
CHÉRIE



CHOUPEPTE



TRÉSOR



BIJOU

Design elements hand painted by Fine Artist Luisa Quintero



PARAMOUR

VISIT PATTERN

MAIDENHAIR



In collaboration with collage artist Loraine Mohar.

[VISIT PATTERN](#)

CORONET



OPAL



AMARANTH



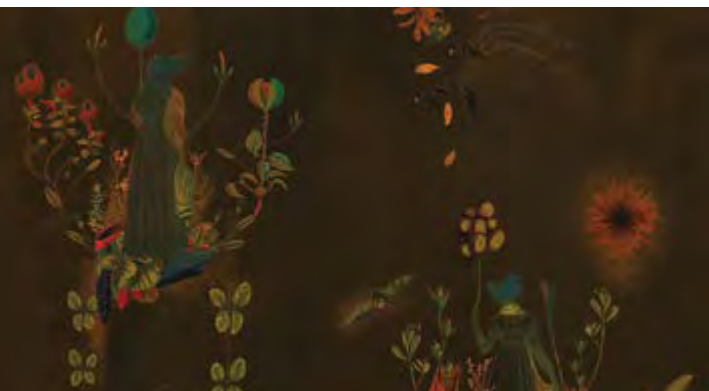
NEITHERLAND



PRIMROSE



EPHEMERA



ASHEN



BRACKEN



MOON



VISIT PATTERN

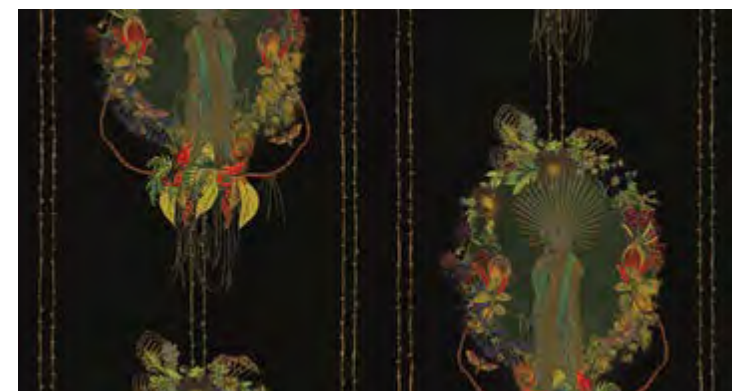
OBSCURA



FLORA



GOTHIC



In collaboration with collage artist Loraine Mohar.

VISIT PATTERN



ORCHID



MARIGOLD



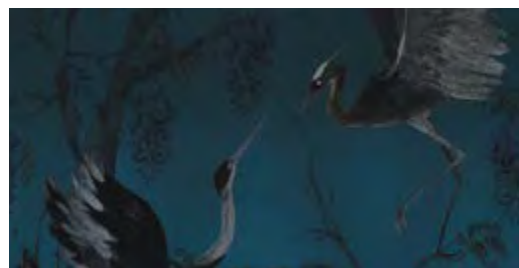
VERBENA



ARTEMIS



DAHLIA



PEACOCK



IRIS



SNAPDRAGON

PARADIS - ATELIER





VISIT PATTERN

ORCHID WITH PATINA





COIL



SSSILVER



VENOM



PYTHON



VIPER



BOA

SERPENTINE



VISIT PATTERN



INDICA



SATIVA



HIGH NOON



LEGALIZED



CHRONIC

O CANNADA
- Large Scale



O CANNADA
- Small Scale



[VISIT PATTERN](#)

CHRONIC



SATIVA



HIGH NOON



LEGALIZED



INDICA



BÜGEN



ENTOMOLOGY



VISIT PATTERN

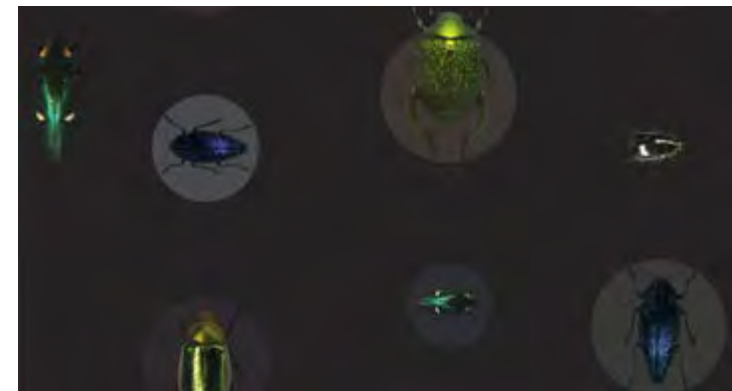
SCARAB



MANTIS



ARACHNID





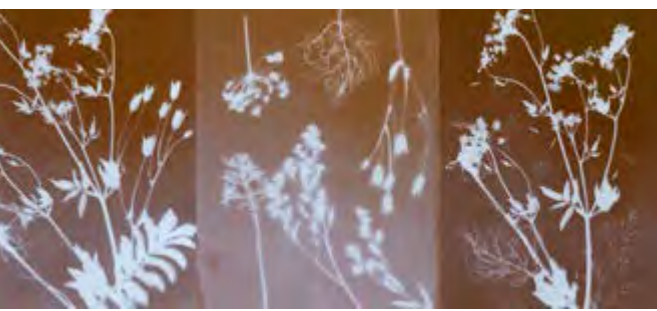
CYANOTYPE



NOIROTYPE



SHADOWTYPE



SEPIATYPE



DAGUERREOTYPE
METALLIC



PHANTOM FLORA

Original artwork by Carla Morano

VISIT PATTERN

CENTURY

Don't you look dapper in that smoking jacket.
Perhaps it's just the champagne talking or maybe
the gin, but who could resist that ragtime jazz.

Glamour does well with a hint of danger.

Impropriety and pearls make a perfect pair.

Come a little closer... you're just the bee's knees.



DOUBLE
CROSS



HOTSY TOTSY



PISTOL



DOLLFACE



DECO FANTASTIC

DECO GALACTIC



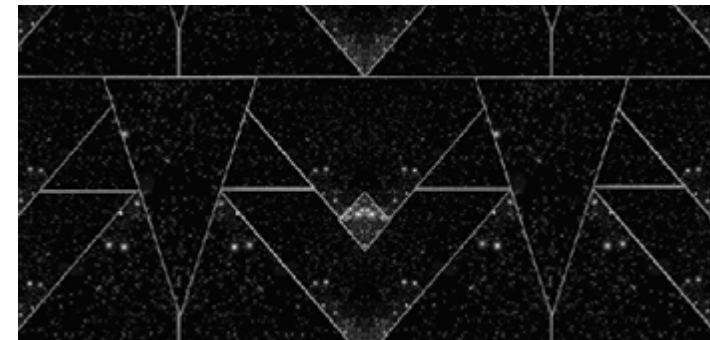
GLITZY



RITZY



DITZY



PLUME



ALABASTER



ROUGE



INKWELL



PLUME - METALLIC



[VISIT PATTERN](#)

BLUSH



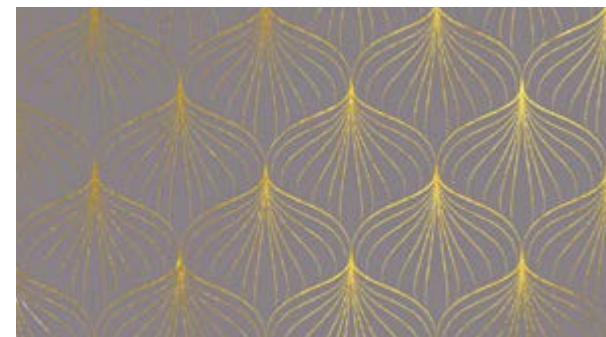
CELADON

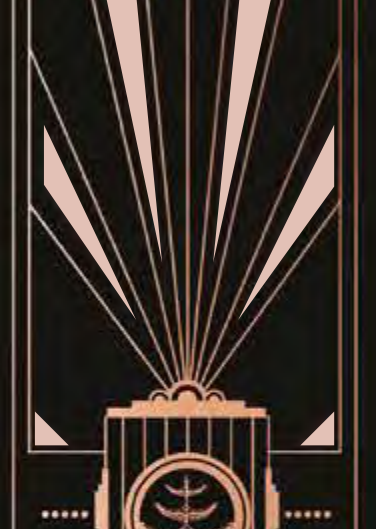


CREAM

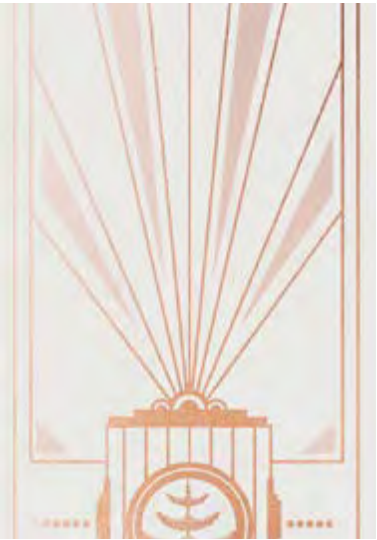


SMOKE





OPIUM



ANGEL DUST



VALIUM



DEPRESSION ERA

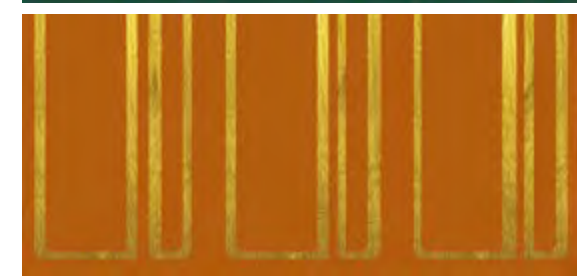
DAPPER



VERDITE



BAKELITE



SAPPHIRE



QUARTZ



LAPIS



JADE





QUARTZ



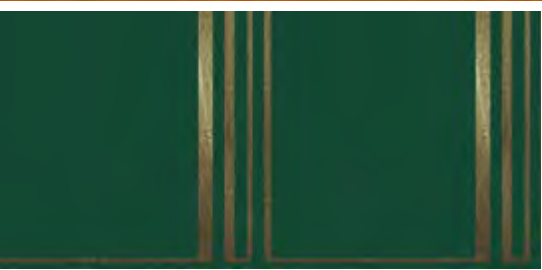
LAPIS



JADE



BAKELITE

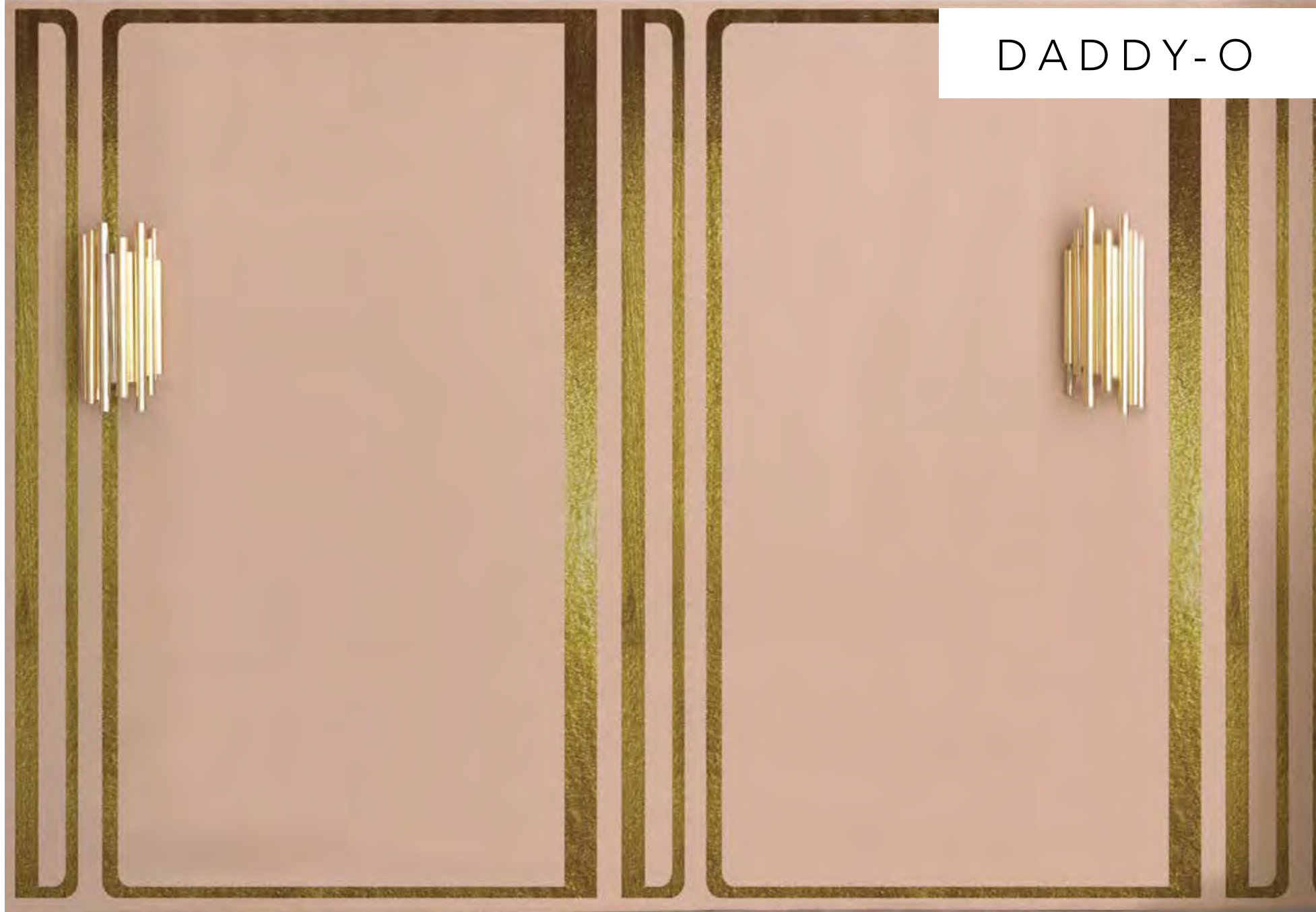


VERDITE



SAPPHIRE

DADDY-O

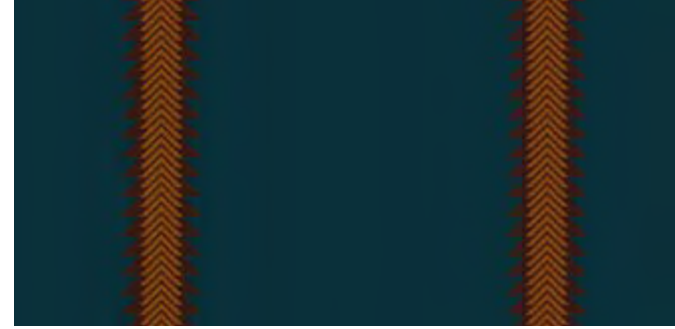


VISIT PATTERN

BIG SHOT



HIJINX



HIDEOUT



CANOODLE



MORSE

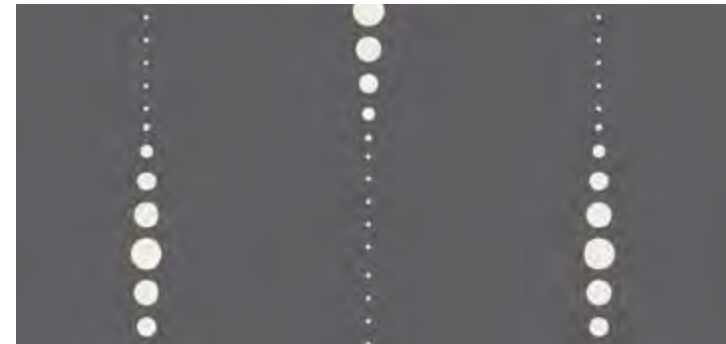


[VISIT PATTERN](#)

CREMA



MOUSE



CITRON



ANATOMY

They say that beauty is only skin deep.
Real beauty is deeper...much deeper.



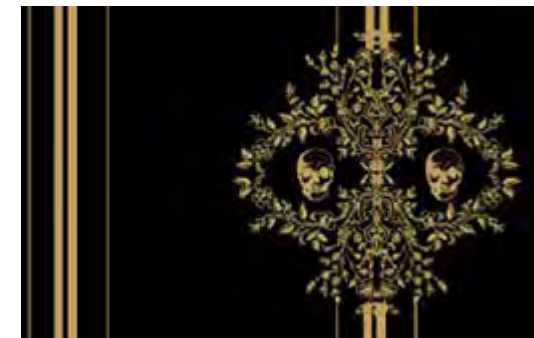
SKELETON KEY



INK



COAL

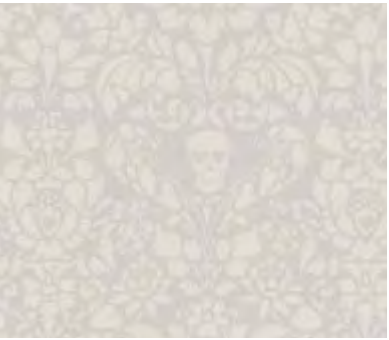


POWDER



NEAPOLITAN

LAIT



SORBET



CHOCOLATE



NEAPOLITAN-TONE



OLEANDER



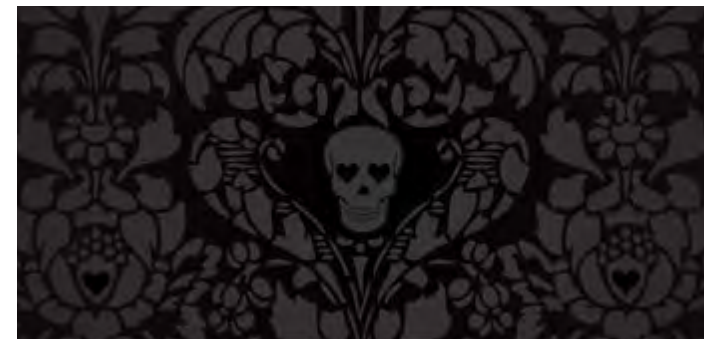
CYANIDE

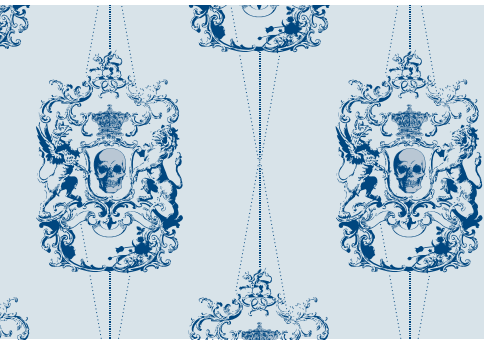


HEMLOCK



NIGHTSHADE





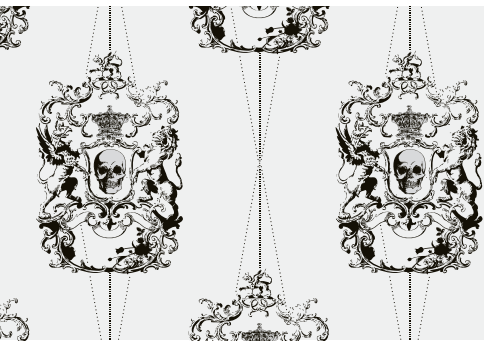
DELFT



CLARET



TOILE



COAT OF ARMS



INSIGNIA

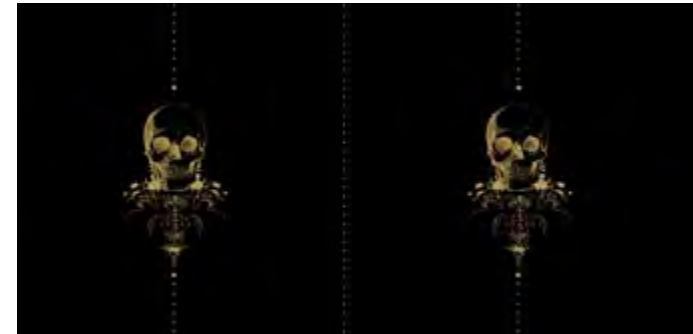
MOURNING GLORY



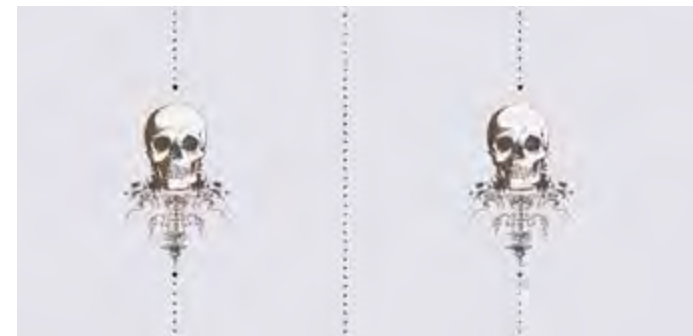
DECAY



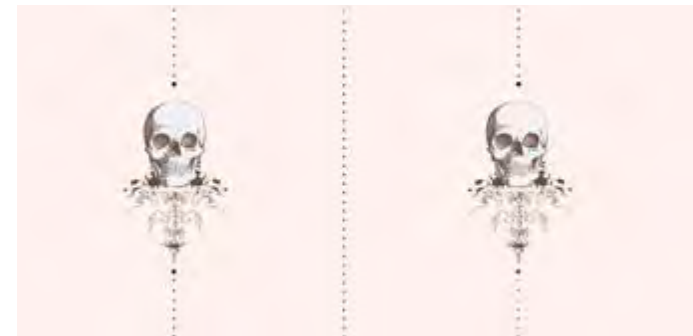
BRUISE



ROT



SKIN





YVES



MANON



MATHILDE



SKELETOILE

[VISIT PATTERN](#)

SKELETOILE - MULTI



CHEVALIER



DELPHINE



BABETTE



MARQUIS



WHIPPERSNAPPERS

All is quiet in the kingdom. But the princess in her tower dreams of adventure, polishing a sword of magical origin. Somewhere nearby, a princeling hums quietly to himself, "Why does that song sound so familiar?"

He pauses, the birds stop singing along. The air stirs slightly outside the window and the trees lean in...

"I think I'll slay a dragon." she says. Perhaps, after lunch.

SALON



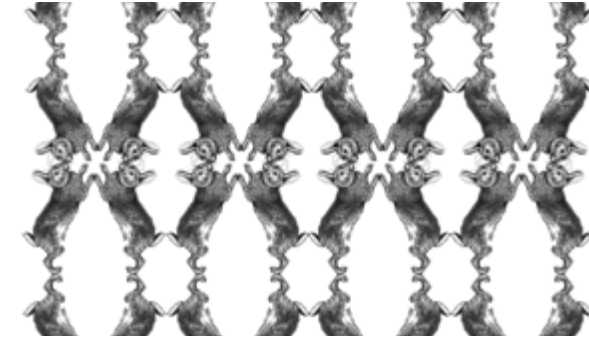
AT IT LIKE BUNNIES



SABLE



ANGORA



NAKED



SLY



Original artwork by Jonah Created at age: 7

VISIT PATTERN

BIG SHOT



VISIT PATTERN

HIDEOUT



HIJINX



CANODLE





LAUDANUM



HARLOT



DRAB



ARSENIC

ODDLY VICTORIAN



COSMIC



Original painting by Shelley Weinreb

VISIT PATTERN

COSMIC



COSMIC METALLIC



FINE & DANDY BORDERS

The King of Xanadu adored embellishments to a degree some might consider preposterous. I, for one never thought this to be the case, why a curated collection of beauty simply never goes out of style and what better diversion than to gaze on a glittering array of ornamental splendour? Beauty is not to be rationed dearest, but to be amplified. Preferably on an absurd scale.

ARBUS - Large Scale



GOLD



SILVER



ALABASTER



ARBUS - Small Scale



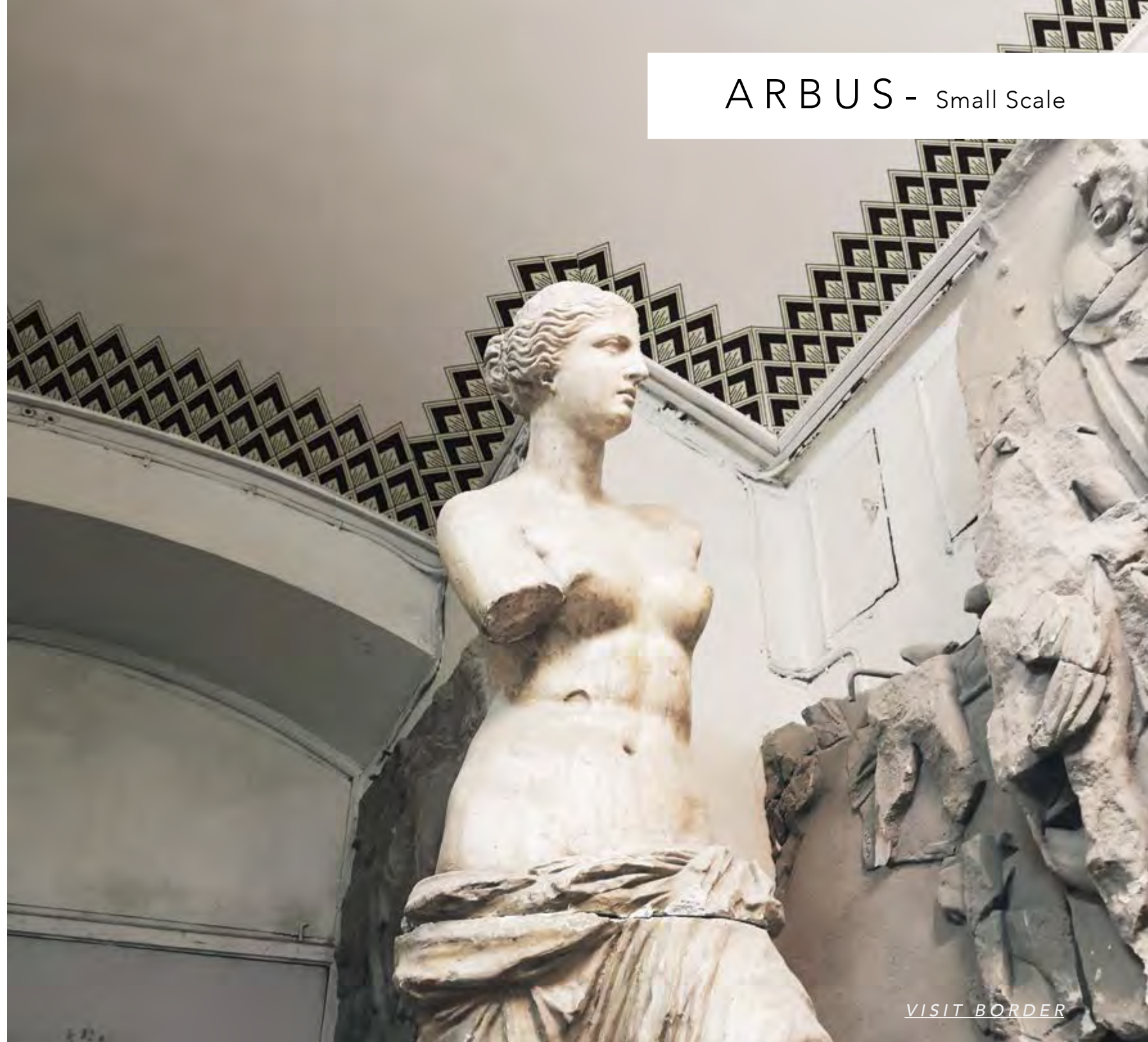
ALABASTER



GOLD



SILVER



CORBUSIER



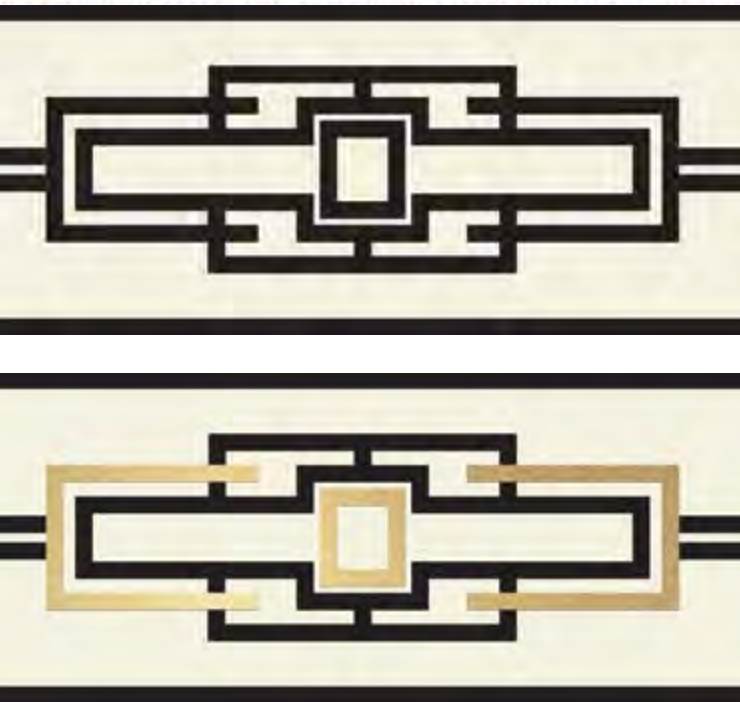
GOLD



ALABASTER



CHAREAU



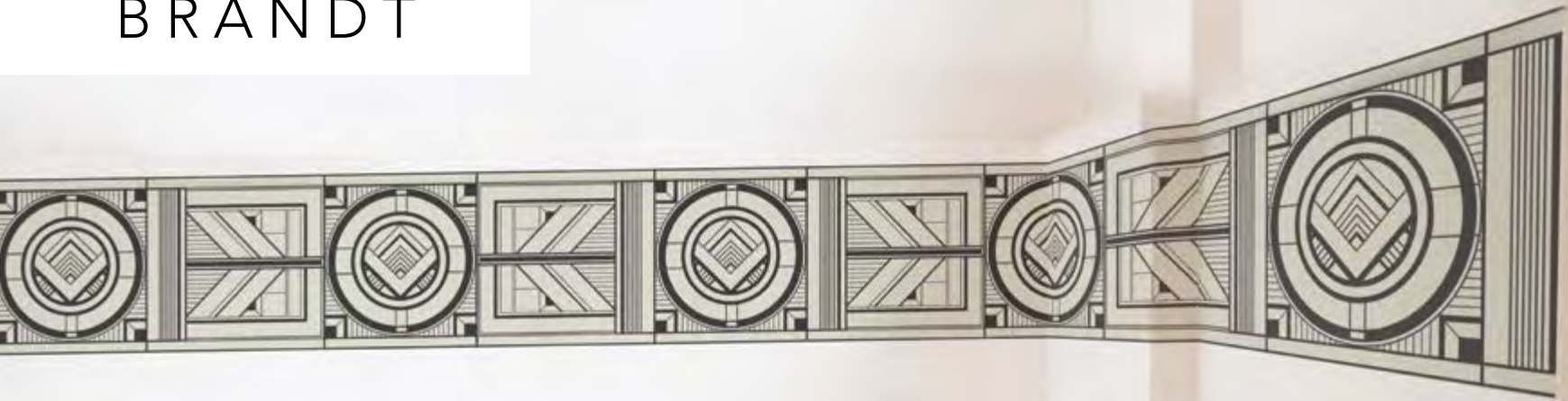
ALABASTER

GOLD

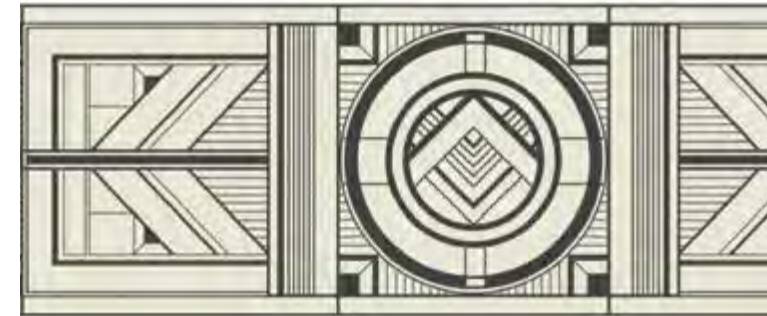


Explore Featured: [CHAREAU LALIQUE](#)

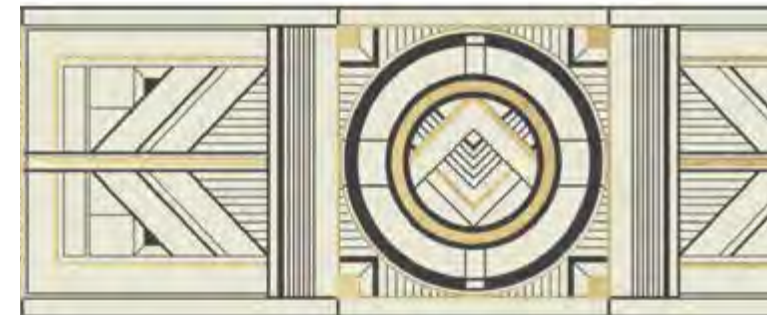
BRANDT



ALABASTER



GOLD

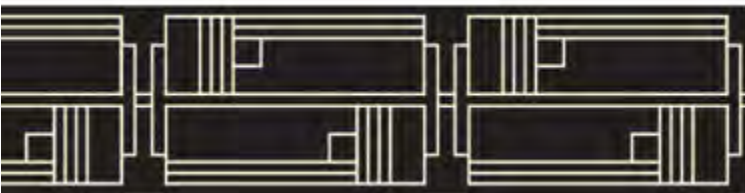


VISIT BRANDT

METROPOLIS + ERTÉ



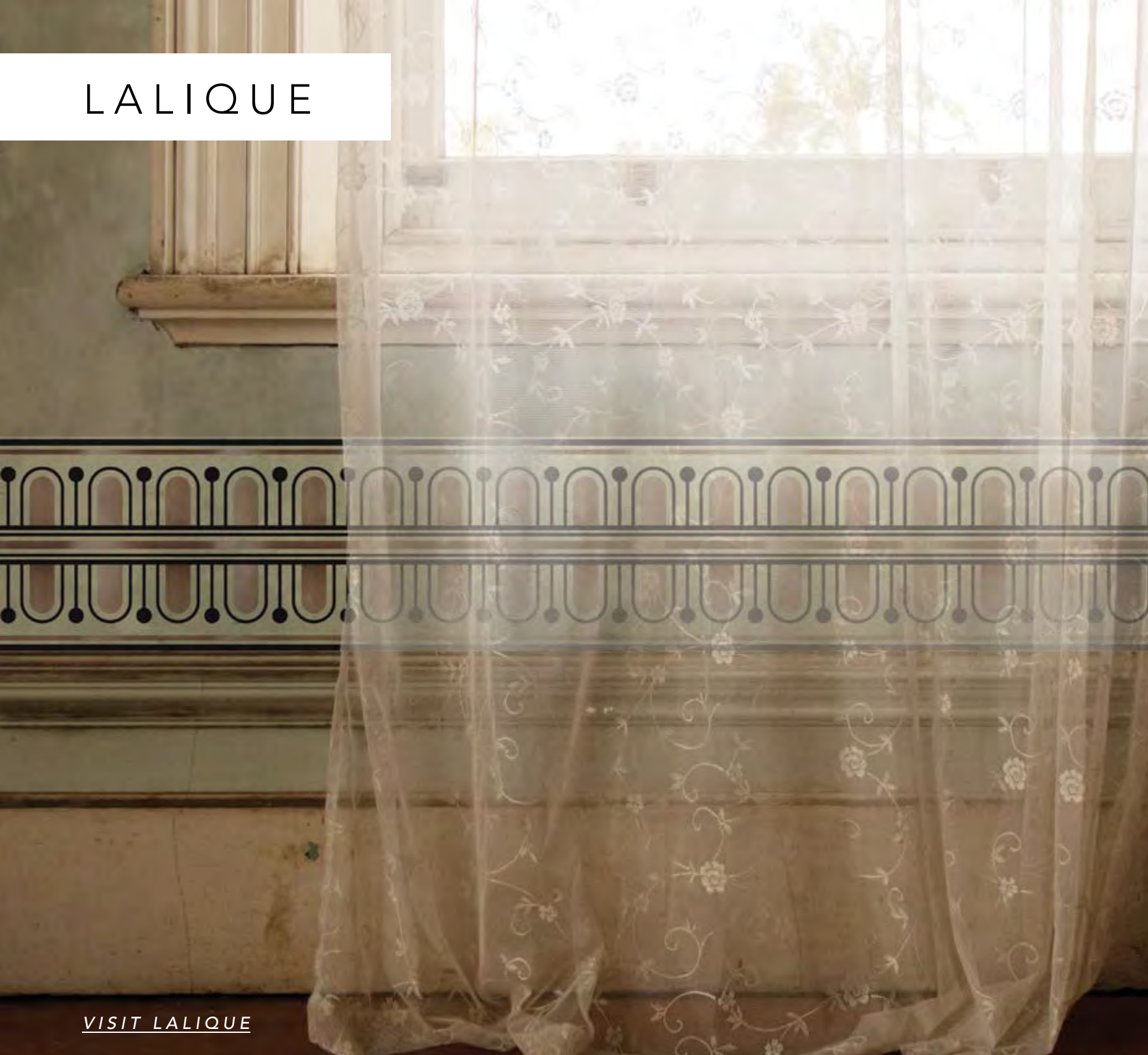
METROPOLIS



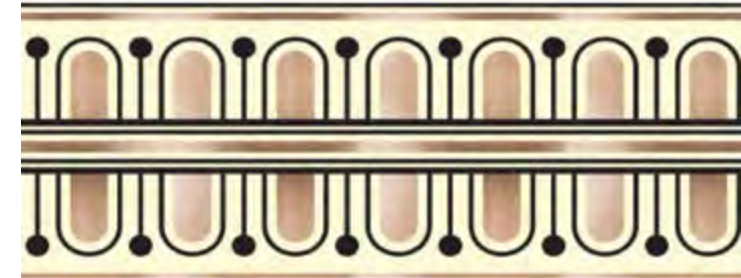
ERTÉ



LALIQUE



L'OR



NOIR



ALABASTER



[VISIT LALIQUE](#)

MAJORELLE



ALABASTER

SILVER

GOLD



VISIT MAJORELLE

VISCOUNT- Small Scale



SOMERSET



ESSEX



DORSET



BRISTOL



VISCOUNT - Large Scale



ESSEX



SOMERSET



DORSET



BRISTOL



VISCOUNT- Oversize



DORSET



ESSEX

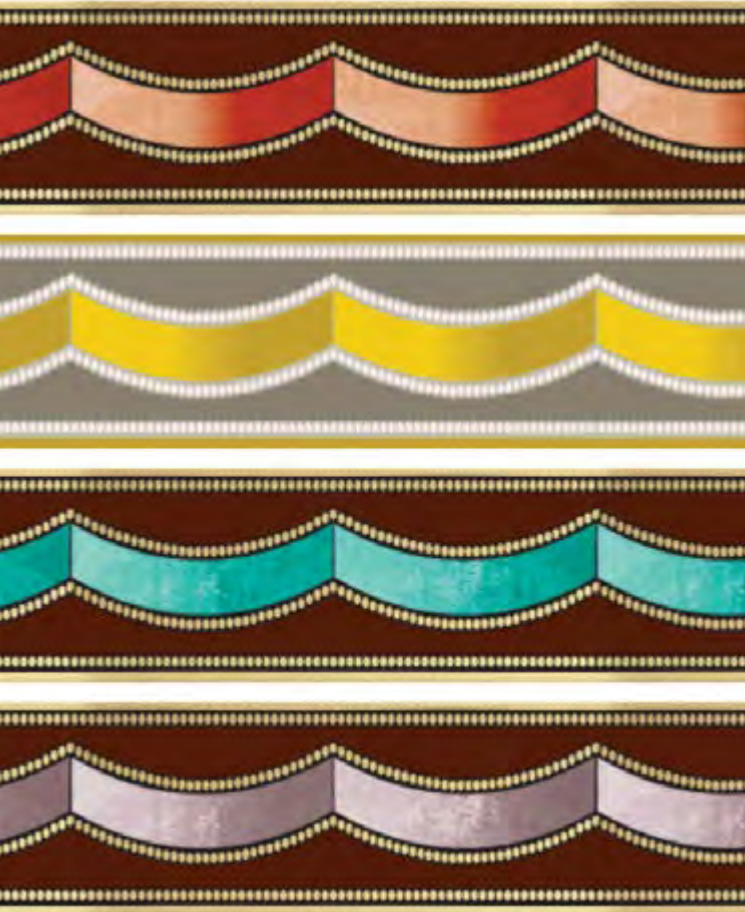


SOMERSET



BRISTOL





SOMERSET

BRISTOL

DORSET

ESSEX



DUCHESS - Small Scale

Explore Featured: [DUCHESS SMALL](#) [DUKE SMALL](#)

DUCHESS - Large Scale



VISIT DUCHESS

BRISTOL



SOMERSET

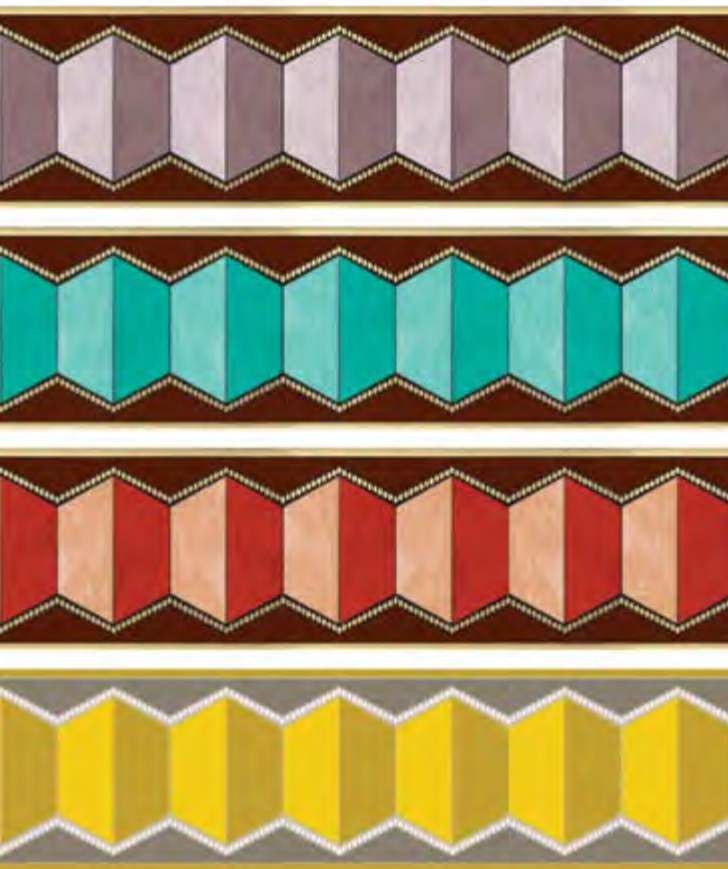


ESSEX



DORSET





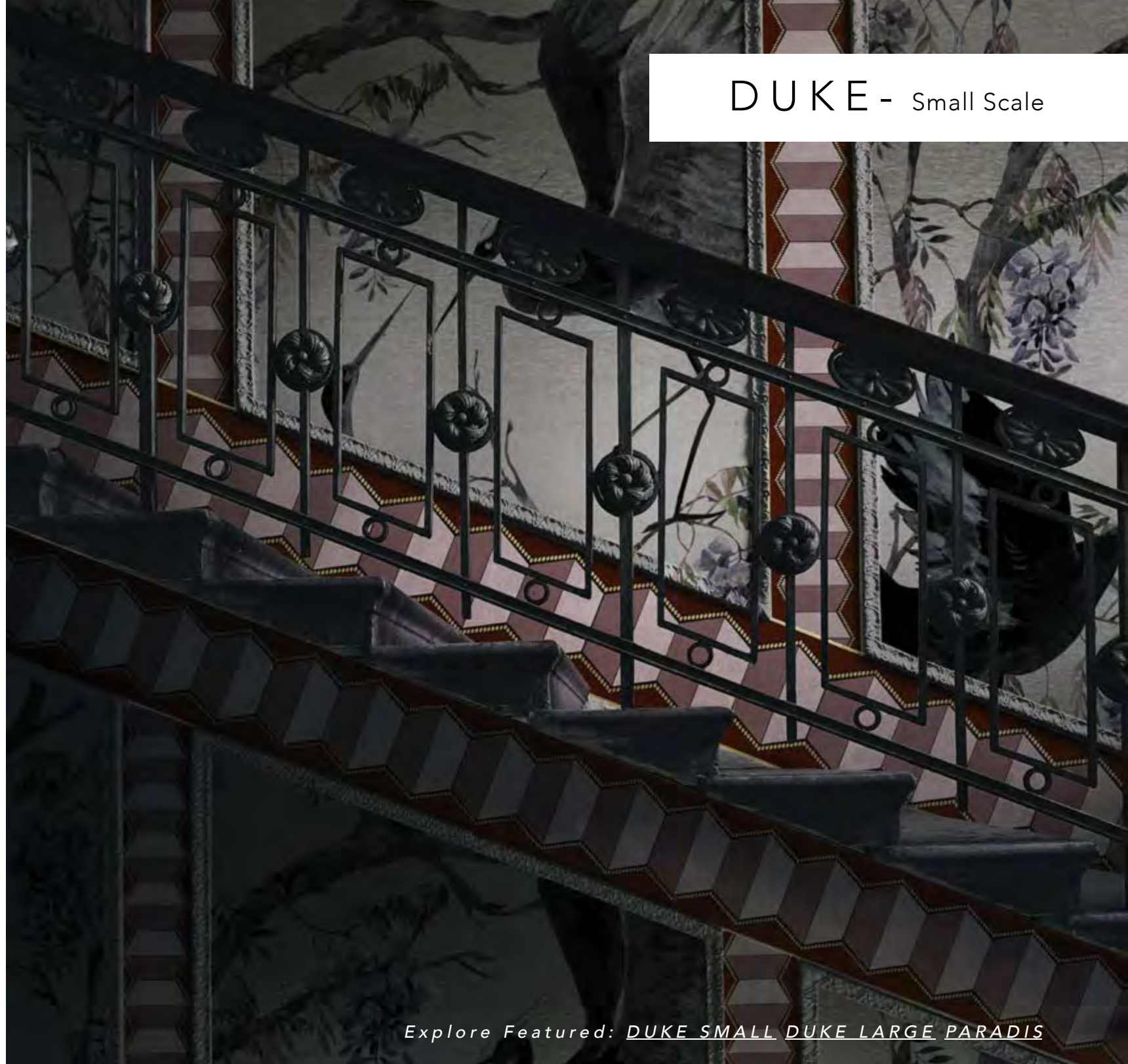
ESSEX

DORSET

SOMERSET

BRISTOL

DUKE - Small Scale



Explore Featured: [DUKE SMALL](#) [DUKE LARGE](#) [PARADIS](#)

DUKE - Large Scale



DORSET



ESSEX



BRISTOL



SOMERSET

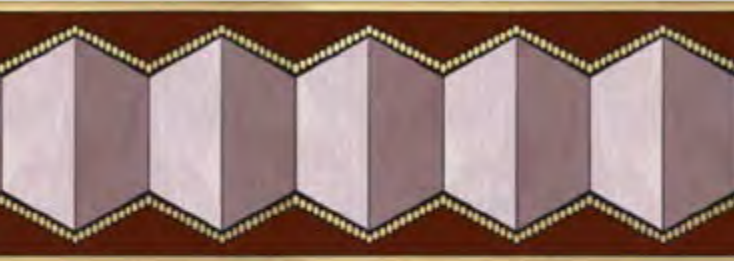




SOMERSET



BRISTOL

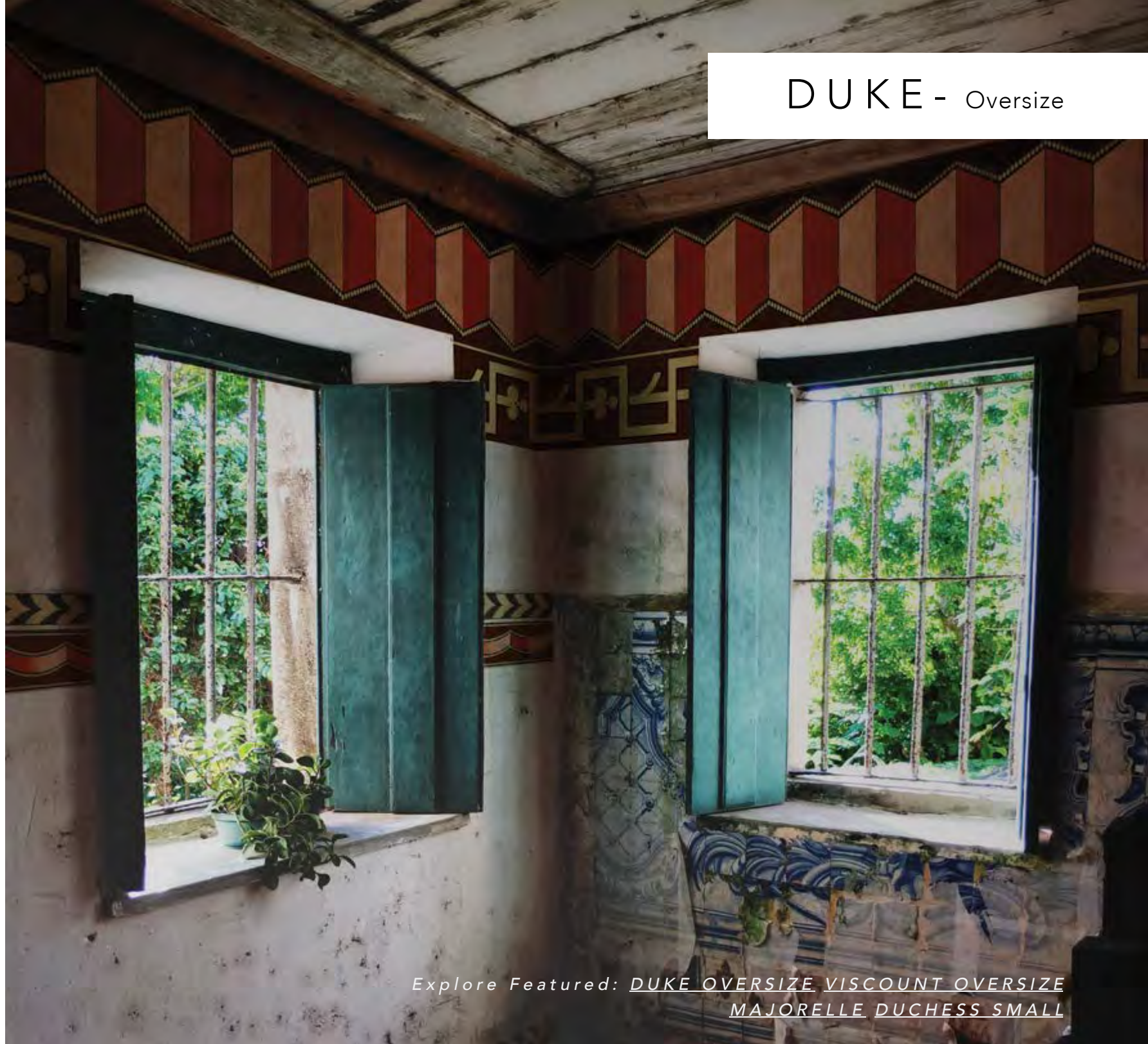


ESSEX



DORSET

DUKE - Oversize



Explore Featured: DUKE OVERSIZE VISCOUNT OVERSIZE
MAJORELLE DUCHESS SMALL

BARONESS



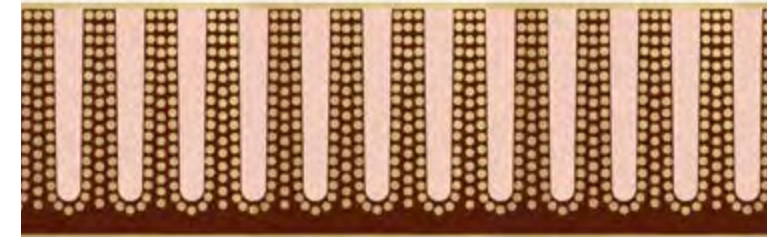
DORSET



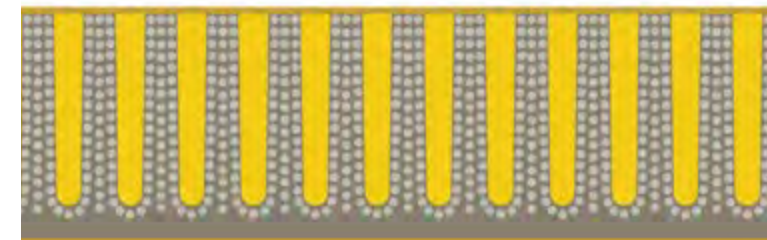
ESSEX



SOMERSET



BRISTOL





fineanddandycompany.com
[@fineanddandyco](https://www.instagram.com/fineanddandyco)